

Strip Series

LED Strip Light



Certifications:

- ◆ UL1598 (File number: E481307)
- ◆ DLC 5.1
- ◆ Ingress protection: IP20

Standard Materials:

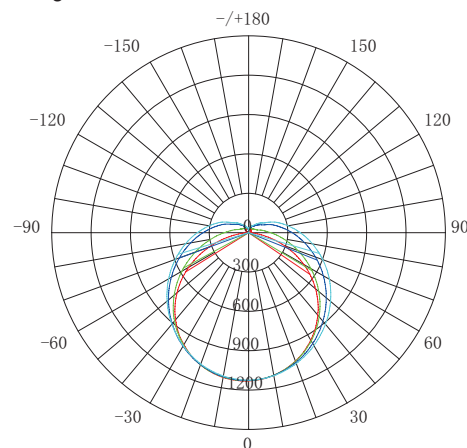
- ◆ Housing: SPCC cold rolled plate
- ◆ Lampshade: PC

Key Features:

- 1 Power tunnable and CCT tunnable.
- 2 Simple and compact structure design, easy for installation, maintenance, and replacement.
- 3 Anti-glare PC lens, high transmittance, comfortable lighting.
- 4 0-10V dimming.
- 5 UL1598 certified, suitable for damp locations.
- 6 App or bluetooth wireless smart control.
- 7 Motion detection integrated sensor.
- 8 Emergency battery optional.
(customer orders the emergency backup battery option by noting the requirement on the order.)

Photometry:

Beam angle: 120°



Ordering Guide:

ZY-ST8FT60/48/36 3500K/4000K/5000K

1

2

3

4

5

1 COMPANY INTERNAL MARKING

2 PRODUCT CATEGORY

◆ Strip light

3 PRODUCT LENGTH

◆ 8FT=2.4meters

4 TUNABLE WATTAGE

◆ 60/48/36 = Tunable wattage: 60W/48W/36W

5 TUNABLE CCT

◆ Tunable CCT: 3500K/4000K/5000K

LED Strip Light

Specifications:

Model	ZY-ST8FT60/48/36 3500K/4000K/5000K
Tunable wattage	36W / 48W / 60W
Power Factor	> 0.9
Operating Voltage	100-277 / 100-347 VAC
Efficiency	150 lm/W
Lumens	5400 / 7200 / 9000 lm
LED Chip	2835
Beam Angle	120°
CRI	80
Tunable CCT	3500K / 4000K / 5000K
Fixture Color	Matte white
Ingress Protection	IP20
Dimming	0-10V dimming
Lifespan	50,000 hours
Warranty	5 years

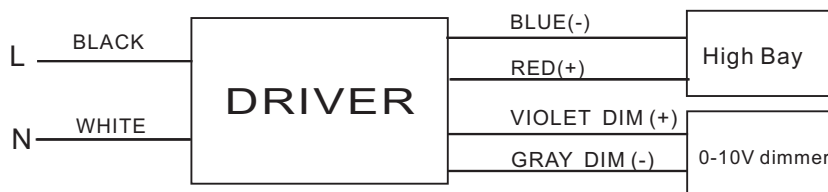
Packing Information:

Quantity/Carton	Packing Size	Net Weight	Gross Weight
2 Pcs	2525x230x125mm / 99.41x9.06x4.92inch	4.2kg / 9.26 lbs	13.3kg / 29.32 lbs

Dimensions:



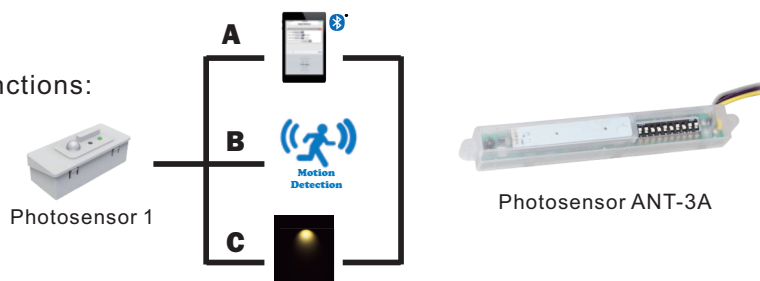
Dimming Connection:



Two Photosensor Options:

◆ Option 1: Photosensor 1 contains the below functions:

- A. App or bluetooth wireless control (see details in page 3)
- B. Motion detection (see details in page 4)
- C. Daylight detection (see details in page 4)

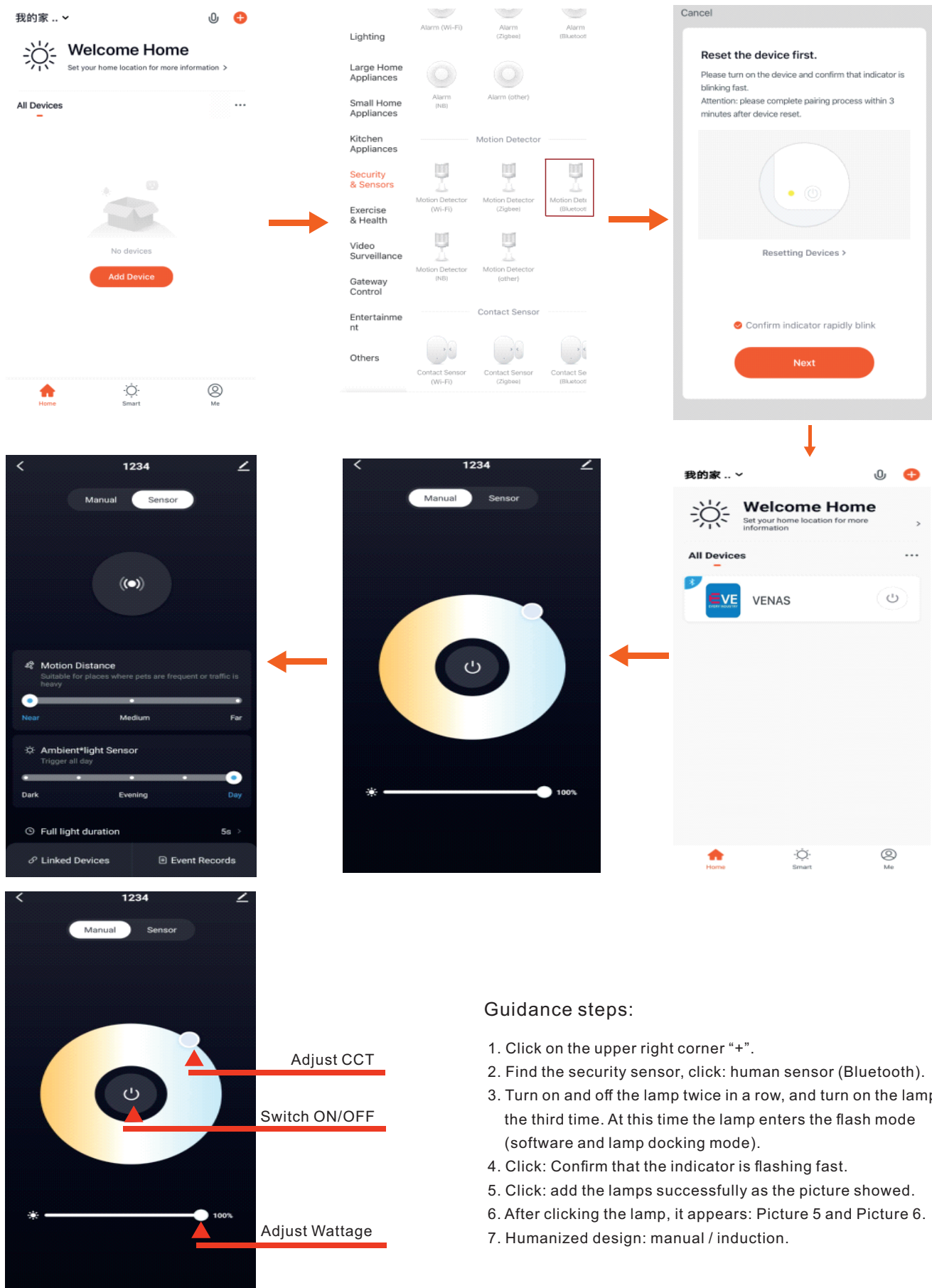


◆ Option 2: Intergrated photosensor ANT-3A:

This photosensor is an occupancy sensor, and it contains daylight function, too. (see details in page 5)

***Note:** When ordering the strip light product, customer should point out which photosensor option is preferred, the manufacturer will produce the strip light with the selected option accordingly.

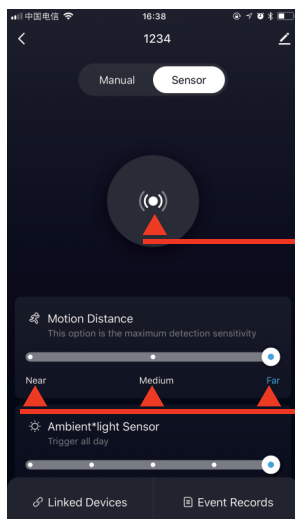
APP or Bluetooth Wireless Control (Photosensor 1):



Guidance steps:

1. Click on the upper right corner "+".
2. Find the security sensor, click: human sensor (Bluetooth).
3. Turn on and off the lamp twice in a row, and turn on the lamp for the third time. At this time the lamp enters the flash mode (software and lamp docking mode).
4. Click: Confirm that the indicator is flashing fast.
5. Click: add the lamps successfully as the picture showed.
6. After clicking the lamp, it appears: Picture 5 and Picture 6.
7. Humanized design: manual / induction.

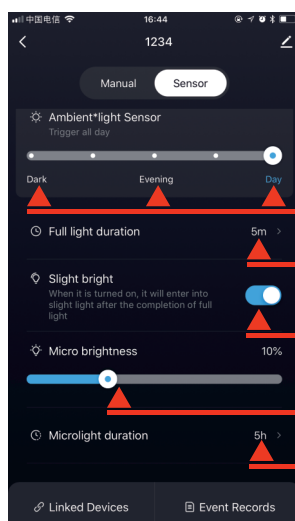
Motion Detection / Daylight Detection (Photosensor 1):



If user wants to turn on the fixture through detecting the human motion, please choose the "Sensor" model. And then the user can set up the basic parameters to control the fixture that have been connected.

White=Day Mode
Black=Night Mode

Three different detective distances for choice so that user can set the most suitable distance to save more energy.



Three different detective light models for choice. When the light sensor detects the light which is weaker than the natural light and the PIR detects motion, the fixture will light on (the natural light level is set). So it is really important for user to choose the detecting light model because whether PIR motion sensor can work depends on whether the light model allows it after detecting the light. Usually, please set up the light detective model according to the time user is in.

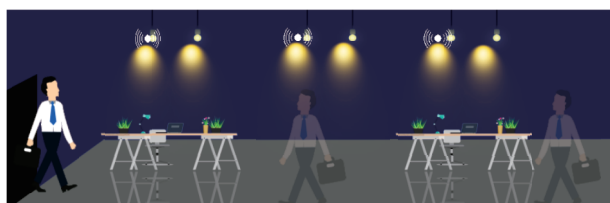
1. If user wants PIR motion sensor can only work on dark night, please choose "Dark".
2. If user wants PIR motion sensor can work on dark night and in the evening, please choose "Evening".
3. If user wants PIR motion sensor can work whole day, please choose "Day".

After PIR sensor can't detect the motion, user can set the time of the full light duration according to his demand.

If user wants to add more time of light duration with weaker light after the motion can't be detected by PIR sensor, the user can also achieve it through the "Slight bright" function.

User can choose the prolonged light intensity here.

User can choose the prolonged light time here.

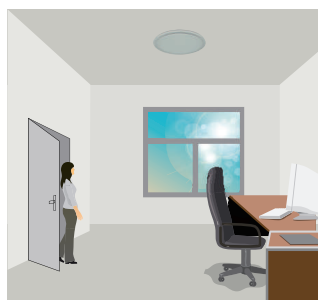


Intergrated photosensor ANT-3A:

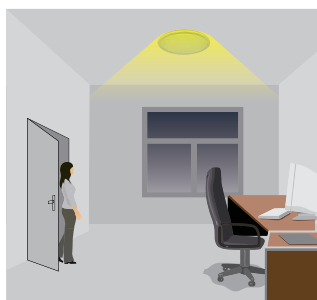
Function and options:

Three levels of light control are provided: 100% - dimming (0%, 10%, 30%, 50%) - off, selectable waiting period: motion holding time and 24 hours, selectable daylight threshold, and freedom of detection area.

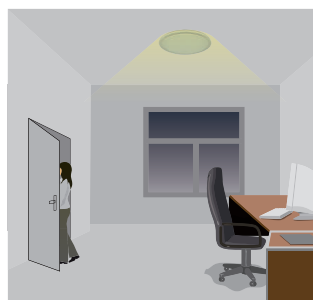
If the natural light is lower than the light control setting (10lux, 30lux, 50lux), the light will not turn on automatically (0%, 10%, 30%, 50%). When a person's movement in the room is detected, the light will be 100% turned on. When the person leaves the room, the light will enter the standby state after waiting time.



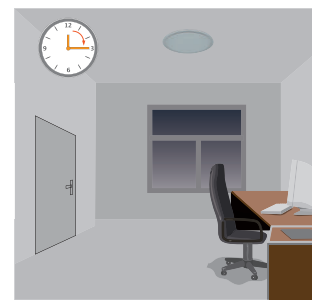
With sufficient natural light, the light does not switch on when presence is detected.



With insufficient natural light, the sensor switches on the light automatically when presence is detected. The luminaire never switches off with presence, even the nature light is sufficient.

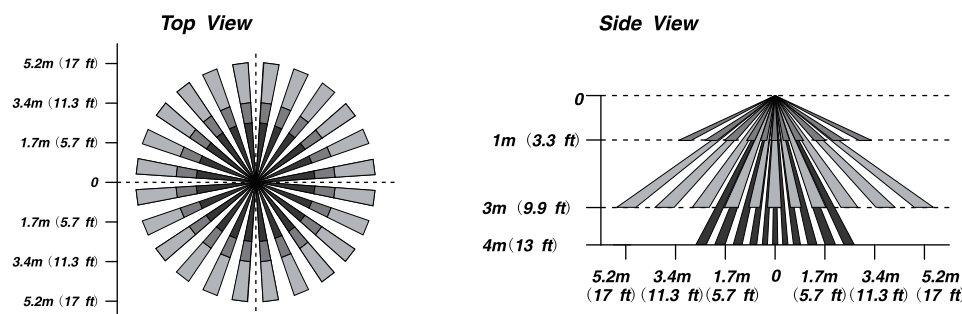


If person leaves, the light dims to 0%/10%/30%/50% (options) standby level after hold time.



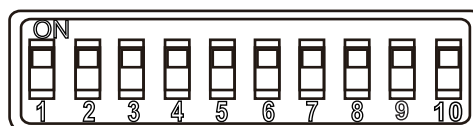
Light switches off automatically after the dimming time elapsed.

Sensor coverage:



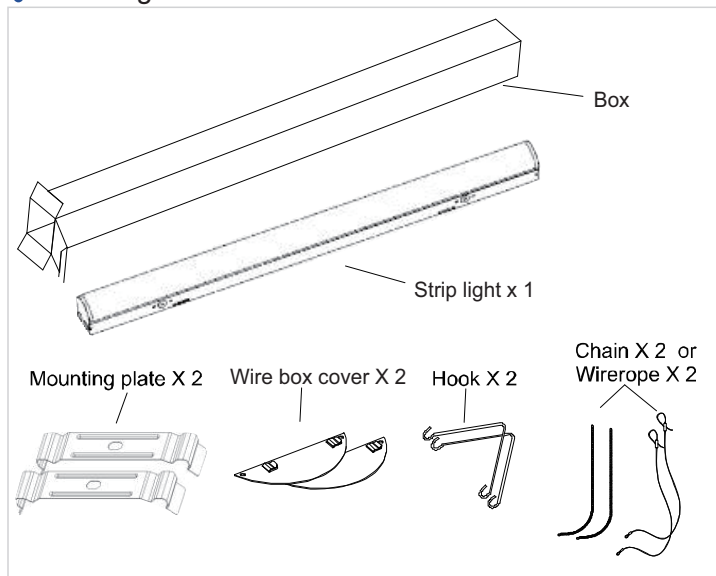
Parameter setting by dip switch:

- 1 & 2: Sensitivity setting
- 3 & 4: Hold time setting
- 5 & 6: Lux setting
- 7 & 8: Standby light level setting
- 9 & 10: Standby time setting

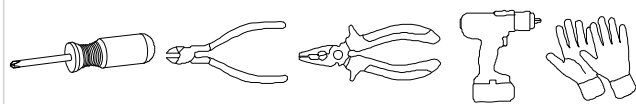


Installation:

◆ Packing list:

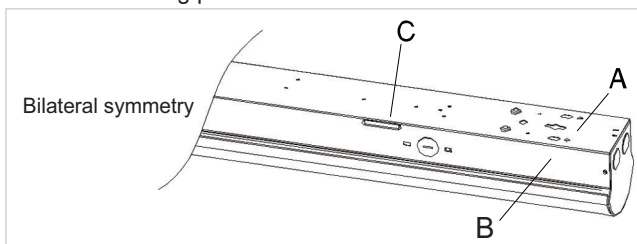


◆ Tools requirement:



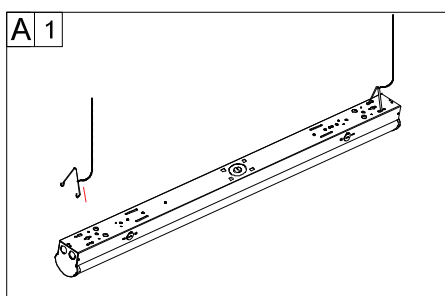
◆ Mounting options:

- A. Chain and V hook mounting
- B. Surface mounting
- C. Mounting plate installation

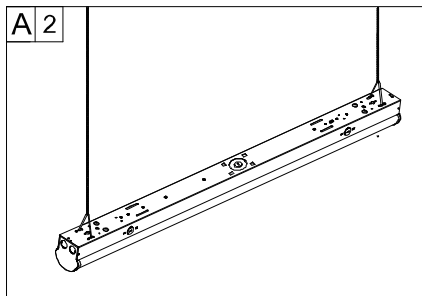


◆ Installation steps:

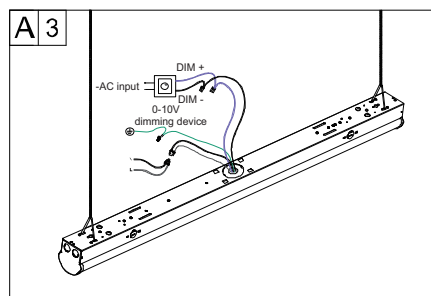
◆ A. Chain and V hook mounting:



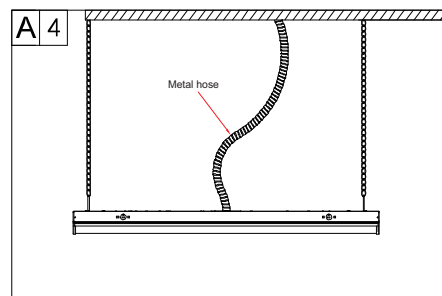
Step 1: Insert the hook with chain or wirerope into the installation hole.



Step 2: Fix the chain to installation location, adjust the height of chain until the fixture is balanced.

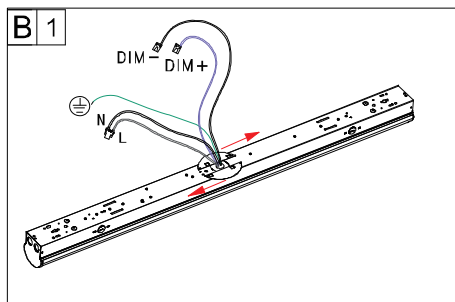


Step 3: Connect AC wire and dimming wire.

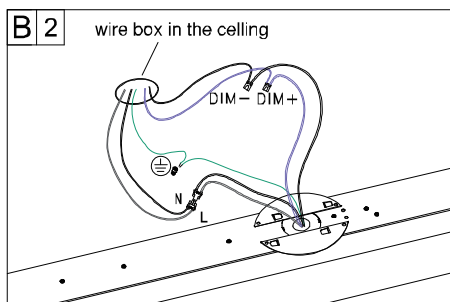


Step 4: Wrap wires with metal material.

B. Surface mounting



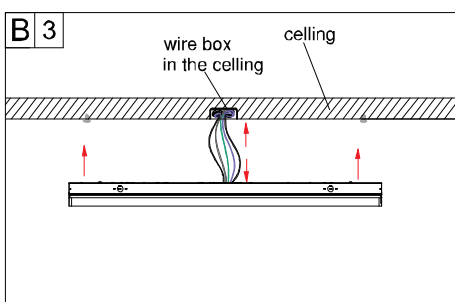
Step 1: Lock the wire box cover.



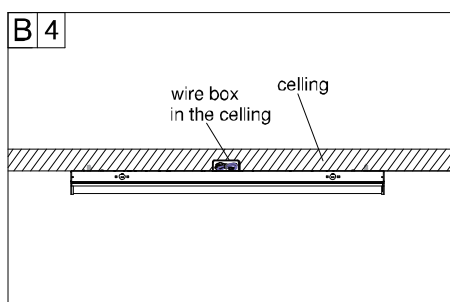
Step 2: Connect AC wire and dimming wire.

Notice:

If there is no wire box in the ceiling, wire box cover can not be used.



Step 3: Lift up the fixture and put wires into box.

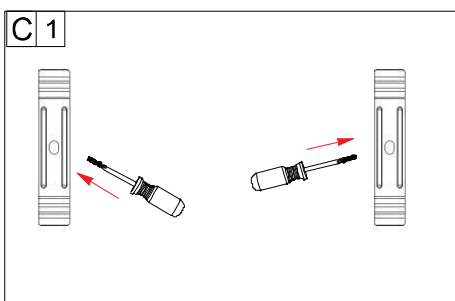


Step 4: Lock the fixture by nail.

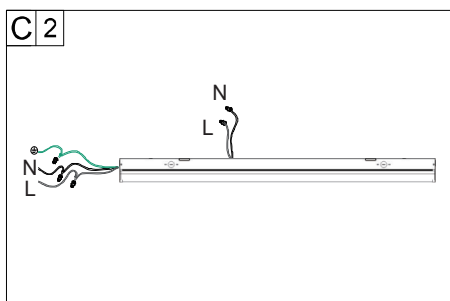
Notice:

If dimming wire is not used, please insulate both ends of dimming wire.

C. Mounting plate installation



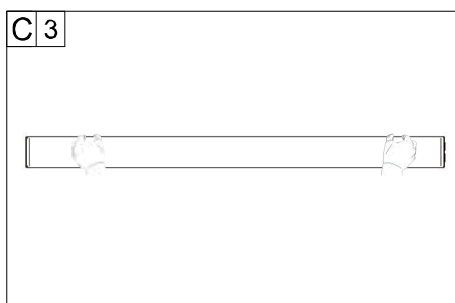
Step 1: Lock the mounting clasp with a screwdriver.



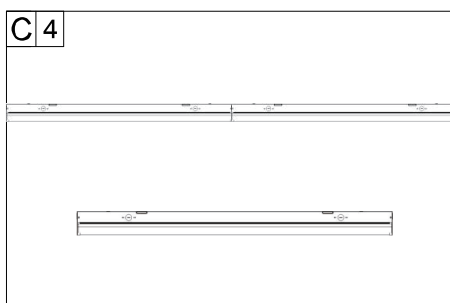
Step 2: Connect wire. If connect wire at side, insulate both ends of AC wire at the bottom.

WARNING:

If connect wire at side, insulate both ends of AC wire at the bottom.



Step 3: Press the luminaire by hand to make it buckle firmly.



Step 4: Put the wire back in the box. Multiple fixtures can be installed on a line but can not be connected to more than 10 fixtures because of limited wire load.

Notice:

fixtures can be installed on a line but can not be connected to more than 10 fixtures because of limited wire load.