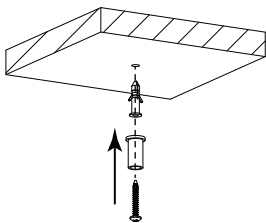


Suspension Mount Installation Guide

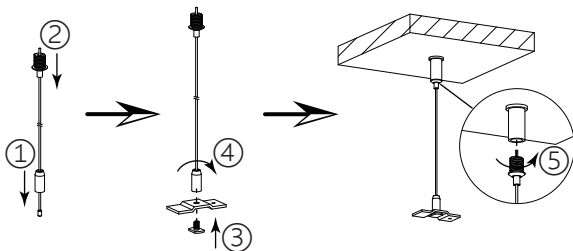
NOTE:

- 1 Read instructions carefully before installation.
- 2 Install by a qualified electrician.
- 3 Make sure the power is OFF before starting installation or attempting any maintenance.
- 4 Application space is with no chemical compositions such as sulphur, acid, halogen etc.

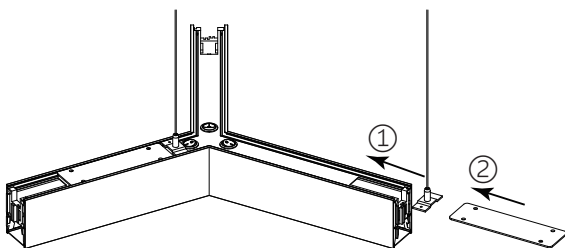
STEP 1 Based on the layout of your light fixture, install the wire rope ceiling mounts at the desired positions on the ceiling.



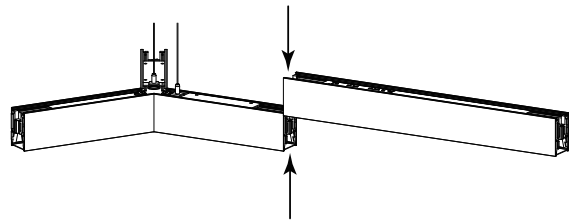
STEP 2 Assemble the wire rope suspension kit and mount it to the ceiling.



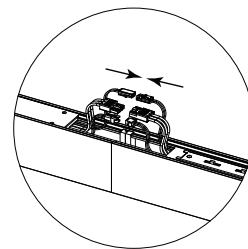
STEP 3 Take out the Y-shaped (or V-shaped or L-shaped) connecting light fixture. Slide the suspension slider and the connecting cover plate into the back of the light body.



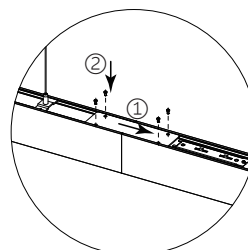
STEP 4 Take out the straight 2ft light fixture. Connect it to the Y-shaped (or V-shaped or L-shaped) connecting light fixture by their quick-connect covers together.



STEP 5 At the wire ports of the two connected light fixtures, pull out the terminal wires. Connect matching male and female terminals together, then neatly tuck the wires back into the light body.



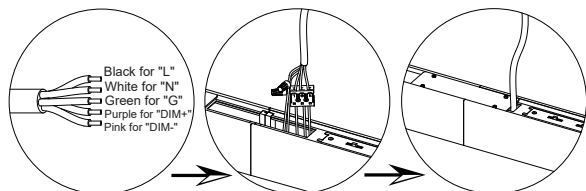
STEP 6 Slide the connecting cover plate on the Y-shaped light fixture to the position between the two lights, covering their wire ports. Then, use the 4 screws from the accessory bag to secure the cover plate.



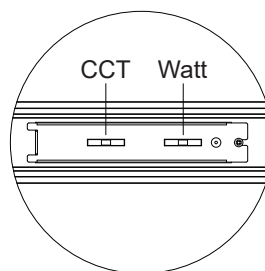
STEP 7 Take the power cord from the accessory bag. First, connect one end of the power cord to the wires inside the light: Black (L), White (N), Green/Yellow (G), Purple (DIM+) Pink (DIM-).

Use wire connectors for each, then slide the cover plate between the two light fixtures and secure it. Next, connect the other end of the power cord to the matching colored wires in the junction box using wire connectors.

Note: Each power cord can handle up to 600W. For example, with hexagon lights: one power cord can supply up to two hexagons. If you have more than two, add another power cord at a suitable point.

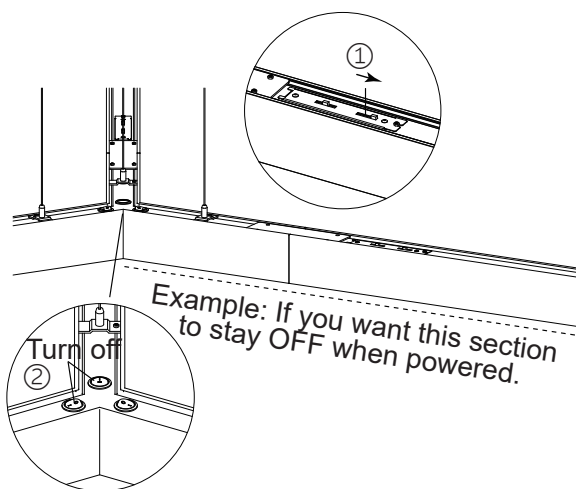
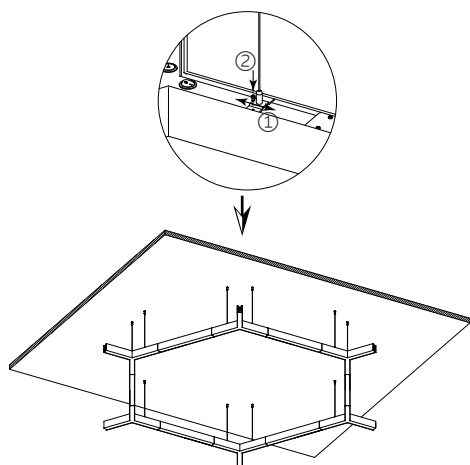


STEP10 Use the DIP switch on the back of the light fixture to set the desired CCT and Watt. Then, power on to test if the installation is successful.



STEP11 If you want certain light sections to remain off when powered: Set the power DIP switch on the back of those lights to "OFF". Make sure the switch for the sections you want to stay ON is closed at the corner connection on the light back. This ensures the best light beam effect.

STEP 8 Adjust the suspension slider to the desired position and secure it with screws to complete the installation of one creative lighting unit (or a section of it).



STEP 9 Take the plastic back cover and end cap from the accessory bag. Attach them to the light at the end of your creative lighting layout.

