

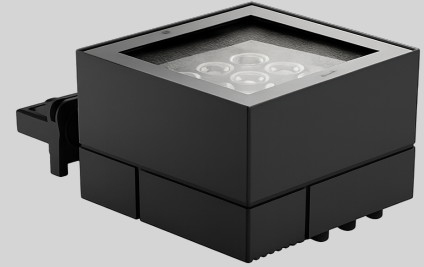
RHEA: ELIO-R

Fixtures are preset to 2700K / 3000K / 3500K / 4000K and can be dyed to match the color temperature after installation. For applications requiring higher color consistency, fine tuning can be performed in 10K increments to ensure uniform visual appearance.

Client:	
Order#:	
Project:	
Type:	

FEATURES

- Remove excessive decorative elements
- Retain only pure straight lines formed by vertical and horizontal planes
- Eliminate complexity and return to simplicity
- Creating a dynamic balance of symmetry and unity



PERFORMANCE DATA

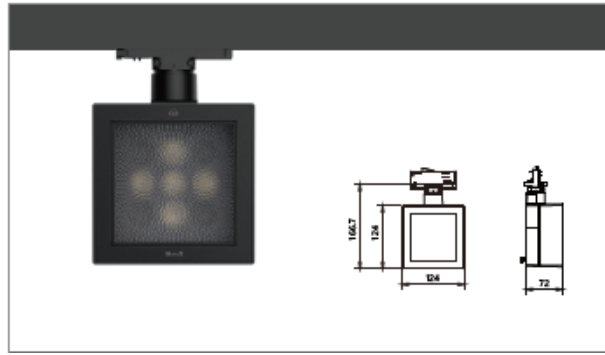


Product ID	Optics	Appearance	Wattage	Ingress Protection	Beam Angle	CCT	CRI	Driver Voltage & Options
ELIO-R	Selectable	BLACK/WHITE	15W-48W	N/A	15° 25° 35° 45°	2700K 3000K 3500K 4000K Dim to Warm 2700-1800K 3000-1800K	90+	120-277Vac

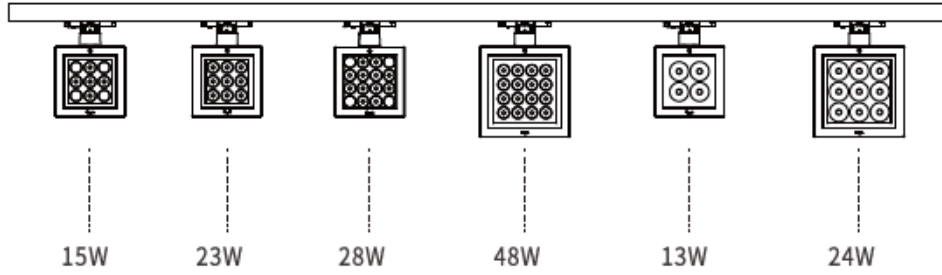
ORDERING INFORMATION

A					
SERIES	BODY	APPEARANCE	REFLECTOR COLOR	CCT	BEAM ANGLE
FIXTURE SERIES					
ELIO	Rosha 2" Recessed Deco Downlight				
BODY					
A	Adjustable				
APPEARANCE					
T	Trim				
TL	Trimless				
REFLECTOR COLOR					
W	White				
B	Black				

CCT	
27K	2700K
30K	3000K
35K	3500K
40K	4000K
WD18/27K	Warm Dim 1800K to 2700K
WD18/30K	Warm Dim 1800K to 3000K
BEAM ANGLE	
15	15°
25	25°
35	35°
45	45°
WARRANTY	
5	5 Year Warranty (included)



Fixed CCT



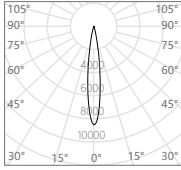
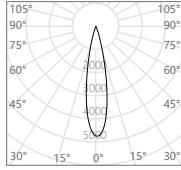
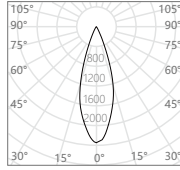
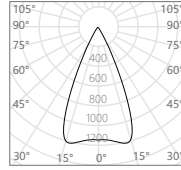
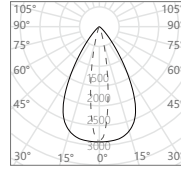
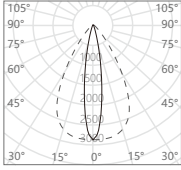
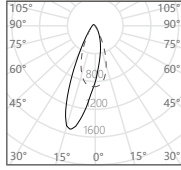
Part Name	Cellular Network	Four Blade	Optical Module	Optical Module	Optical Module	Optical Module	Optical Module	Optical Module	Optical Module
Accessory									
Model NO.	MP12-HC	MP12-BD	MP12-15 15°	MP12-22 22°	MP12-30 30°	MP12-45 45°	MP12-EH 60×16°	MP12-EV 16×60°	MP12-WW Wallwash

CCT	3000K								
CRI	Ra92/Ra95/Ra97(Selectable)								

Beam Angle	15°	22°	30°	45°	EH (60×16°)
Lumens	660lm	647lm	641lm	640lm	634lm
Photometric					
	H(m) E(lx) D(m)	H(m) E(lx) D(m)	H(m) E(lx) D(m)	H(m) E(lx) D(m)	H(m) E(lx) D(m)
	1 7857 0.25	1 4431 0.36	1 2175 0.57	1 1160 0.85	C0 C90
	2 1964 0.49	2 1108 0.72	2 544 1.14	2 290 1.70	1 2325 1.12 0.28
	3 873 0.74	3 492 1.08	3 242 1.71	3 129 2.55	2 581 2.24 0.56
	4 491 0.98	4 277 1.44	4 136 2.28	4 73 3.40	3 258 3.36 0.84
5 314 1.23	5 177 1.80	5 87 2.85	5 46 4.25	4 145 4.48 1.12	
5 93 5.60 1.40					

Beam Angle	EV (16x60°)	Wallwash
Lumens	638lm	632lm

Photometric		
	H(m) E(lx) D(m)	H(m) E(lx) D(m)
	C0 C90	C0 C90
	1 2352 0.28 1.12	1 632 0.56 2.24
	2 588 0.56 2.24	2 261 0.84 3.36
	3 261 0.84 3.36	4 147 1.12 4.48
4 147 1.12 4.48		

CCT	4000K																																																																																																	
CRI	Ra92/Ra95/Ra97																																																																																																	
Beam Angle	15°	22°	30°	45°	EH (60×16°)																																																																																													
Lumens	735lm	719lm	712lm	714lm	723lm																																																																																													
Photometric	 <table border="1"> <thead> <tr> <th>H(m)</th> <th>E(lx)</th> <th>D(m)</th> </tr> </thead> <tbody> <tr><td>1</td><td>8787</td><td>0.25</td></tr> <tr><td>2</td><td>2197</td><td>0.49</td></tr> <tr><td>3</td><td>976</td><td>0.74</td></tr> <tr><td>4</td><td>549</td><td>0.98</td></tr> <tr><td>5</td><td>351</td><td>1.23</td></tr> </tbody> </table>	H(m)	E(lx)	D(m)	1	8787	0.25	2	2197	0.49	3	976	0.74	4	549	0.98	5	351	1.23	 <table border="1"> <thead> <tr> <th>H(m)</th> <th>E(lx)</th> <th>D(m)</th> </tr> </thead> <tbody> <tr><td>1</td><td>4899</td><td>0.36</td></tr> <tr><td>2</td><td>1225</td><td>0.71</td></tr> <tr><td>3</td><td>544</td><td>1.07</td></tr> <tr><td>4</td><td>306</td><td>1.43</td></tr> <tr><td>5</td><td>196</td><td>1.79</td></tr> </tbody> </table>	H(m)	E(lx)	D(m)	1	4899	0.36	2	1225	0.71	3	544	1.07	4	306	1.43	5	196	1.79	 <table border="1"> <thead> <tr> <th>H(m)</th> <th>E(lx)</th> <th>D(m)</th> </tr> </thead> <tbody> <tr><td>1</td><td>2390</td><td>0.58</td></tr> <tr><td>2</td><td>598</td><td>1.15</td></tr> <tr><td>3</td><td>266</td><td>1.73</td></tr> <tr><td>4</td><td>149</td><td>2.31</td></tr> <tr><td>5</td><td>96</td><td>2.89</td></tr> </tbody> </table>	H(m)	E(lx)	D(m)	1	2390	0.58	2	598	1.15	3	266	1.73	4	149	2.31	5	96	2.89	 <table border="1"> <thead> <tr> <th>H(m)</th> <th>E(lx)</th> <th>D(m)</th> </tr> </thead> <tbody> <tr><td>1</td><td>1297</td><td>0.85</td></tr> <tr><td>2</td><td>324</td><td>1.70</td></tr> <tr><td>3</td><td>144</td><td>2.55</td></tr> <tr><td>4</td><td>81</td><td>3.40</td></tr> <tr><td>5</td><td>52</td><td>4.25</td></tr> </tbody> </table>	H(m)	E(lx)	D(m)	1	1297	0.85	2	324	1.70	3	144	2.55	4	81	3.40	5	52	4.25	 <table border="1"> <thead> <tr> <th>H(m)</th> <th>E(lx)</th> <th>D(m)</th> </tr> </thead> <tbody> <tr> <td></td> <td></td> <td>C0 C90</td> </tr> <tr><td>1</td><td>2689</td><td>1.12 0.28</td></tr> <tr><td>2</td><td>672</td><td>2.24 0.56</td></tr> <tr><td>3</td><td>299</td><td>3.36 0.84</td></tr> <tr><td>4</td><td>168</td><td>4.48 1.12</td></tr> <tr><td>5</td><td>108</td><td>5.60 1.40</td></tr> </tbody> </table>	H(m)	E(lx)	D(m)			C0 C90	1	2689	1.12 0.28	2	672	2.24 0.56	3	299	3.36 0.84	4	168	4.48 1.12	5	108	5.60 1.40
H(m)	E(lx)	D(m)																																																																																																
1	8787	0.25																																																																																																
2	2197	0.49																																																																																																
3	976	0.74																																																																																																
4	549	0.98																																																																																																
5	351	1.23																																																																																																
H(m)	E(lx)	D(m)																																																																																																
1	4899	0.36																																																																																																
2	1225	0.71																																																																																																
3	544	1.07																																																																																																
4	306	1.43																																																																																																
5	196	1.79																																																																																																
H(m)	E(lx)	D(m)																																																																																																
1	2390	0.58																																																																																																
2	598	1.15																																																																																																
3	266	1.73																																																																																																
4	149	2.31																																																																																																
5	96	2.89																																																																																																
H(m)	E(lx)	D(m)																																																																																																
1	1297	0.85																																																																																																
2	324	1.70																																																																																																
3	144	2.55																																																																																																
4	81	3.40																																																																																																
5	52	4.25																																																																																																
H(m)	E(lx)	D(m)																																																																																																
		C0 C90																																																																																																
1	2689	1.12 0.28																																																																																																
2	672	2.24 0.56																																																																																																
3	299	3.36 0.84																																																																																																
4	168	4.48 1.12																																																																																																
5	108	5.60 1.40																																																																																																
Beam Angle	EV (16x60°)	Wallwash																																																																																																
Lumens	713lm	703lm																																																																																																
Photometric	 <table border="1"> <thead> <tr> <th>H(m)</th> <th>E(lx)</th> <th>D(m)</th> </tr> </thead> <tbody> <tr> <td></td> <td></td> <td>C0 C90</td> </tr> <tr><td>1</td><td>2774</td><td>0.28 1.12</td></tr> <tr><td>2</td><td>694</td><td>0.56 2.24</td></tr> <tr><td>3</td><td>308</td><td>0.84 3.36</td></tr> <tr><td>4</td><td>173</td><td>1.12 4.48</td></tr> <tr><td>5</td><td>111</td><td>1.40 5.60</td></tr> </tbody> </table>	H(m)	E(lx)	D(m)			C0 C90	1	2774	0.28 1.12	2	694	0.56 2.24	3	308	0.84 3.36	4	173	1.12 4.48	5	111	1.40 5.60																																																																												
H(m)	E(lx)	D(m)																																																																																																
		C0 C90																																																																																																
1	2774	0.28 1.12																																																																																																
2	694	0.56 2.24																																																																																																
3	308	0.84 3.36																																																																																																
4	173	1.12 4.48																																																																																																
5	111	1.40 5.60																																																																																																

CCT ADJUSTIBLE

