

VECTOR Pulse

DVPL Up/Down Architectural Strip

The Vector Pulse Series is a highly competitive linear light. The creative quick-link buckle-type clamp allows the installer to make a tool-free continuous run. The unparalleled flexibility enables users to find the right light at different applications.

FEATURES

- 115120 lm/W, 1,700lm10,800lm.
- Fieldadjustable Power and CCT.
- DirectIndirect flux ratio adjustable.
- Fast and seamless connection thanks to patent toolfree press lock design.
- Continuous run available.
- Multiple connection methods.
- Sensor and EM solution ready.



Client:	
Order#:	
Project:	
Type:	



PERFORMANCE DATA

Model Number	Wattage Up	Wattage Down	CCT	Efficacy
DVPL-GEN2-2MW20	10W, 12W, 16W, 20W (selectable)	10W, 12W, 16W, 20W (selectable)	2700K, 3000K, 3500K, 4000K, 5000K (selectable)	>130 Lm/W
DVPL-GEN2-2MW20-W				
DVPL-GEN2-4MW40	20W, 24W, 32W, 40W (selectable)			
DVPL-GEN2-4MW40-W				
DVPL-GEN2-8MW80	40W, 48W, 64W, 80W (selectable)			
DVPL-GEN2-8MW80-W				

ORDERING INFORMATION

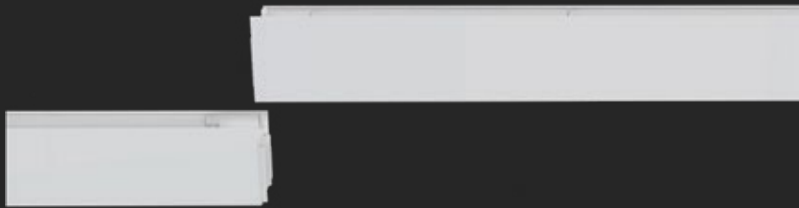
DVPL / GEN2 / / / / /
 SERIES PHASE SIZE WATTAGE COLOR WARRANTY

FIXTURE SERIES	
DVPL	Vector Pulse Up/Down Architectural Strip
PHASE	
GEN2	Generation II: Multi Watt, Multi CCT
SIZE	
2	2 Feet
4	4 Feet
8	8 Feet
WATTAGE	
MW20	20W - 2 Feet Only
MW40	40W - 4 Feet Only
MW80	80W - 8 feet Only

COLOR	
-	Black (Standard)
W	White Finish
WARRANTY	
5	5 Year Warranty (included)
10	10 Year Warranty

Fast and seamless connection

Screwfree to remove endcover. Toolfree press lock connection.



Distributions



Direct/Indirect flux ratio adjustable

Direct	Indirect
100%	0%
70%	30%
50%	50%

Specifications

- UL Listing:
Suitable for damp locations
- LEDs:
Longlife, highefficacy, micropower LEDs
- Lifespan:
Lumen Maintenance, L70 > 100,000 hours
- Housing and Lens:
Sheet metal stamping, PC lens

Ambient Operating Temperature:
20°C (4°F) to 50°C (122°F)

Driver:
Driver includes dimming control wiring for 010V dimming systems. Flicker:10%.

CRI:80

Dimensions

Length



24.5(623)



48.1(1223)



95.7(2431)

Height and Width



2.1(54)

Size unit: inch(mm)

Mounting

Pendent mount, surface mount, wall mount, recessed mount are available with accessories(purchase separately).



Pendent mount



Surface mount

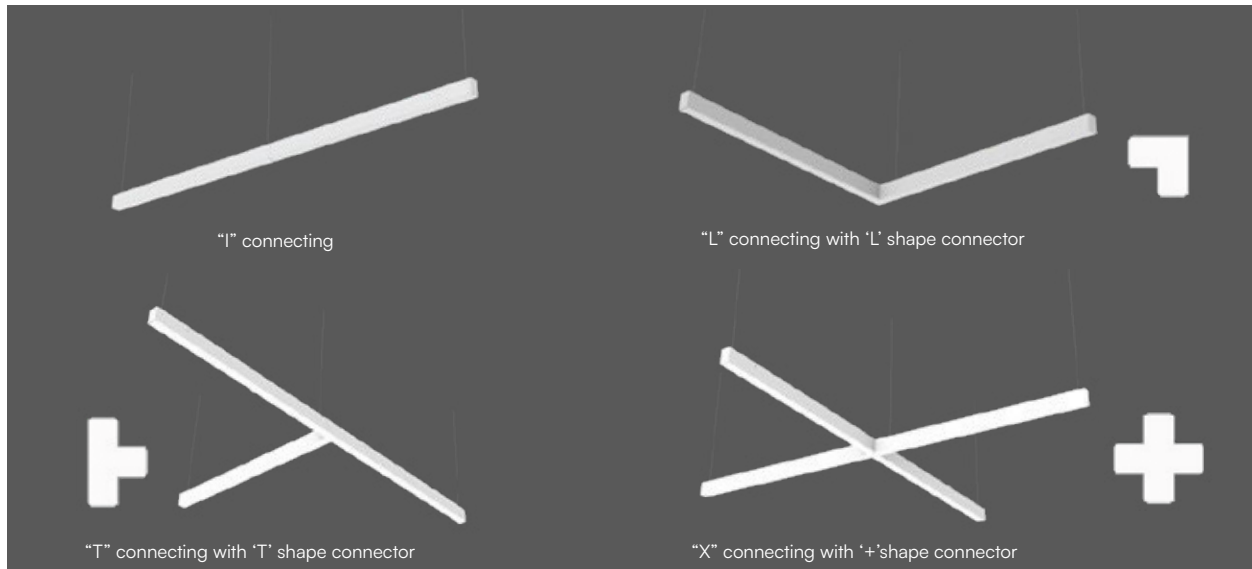


Recessed mount



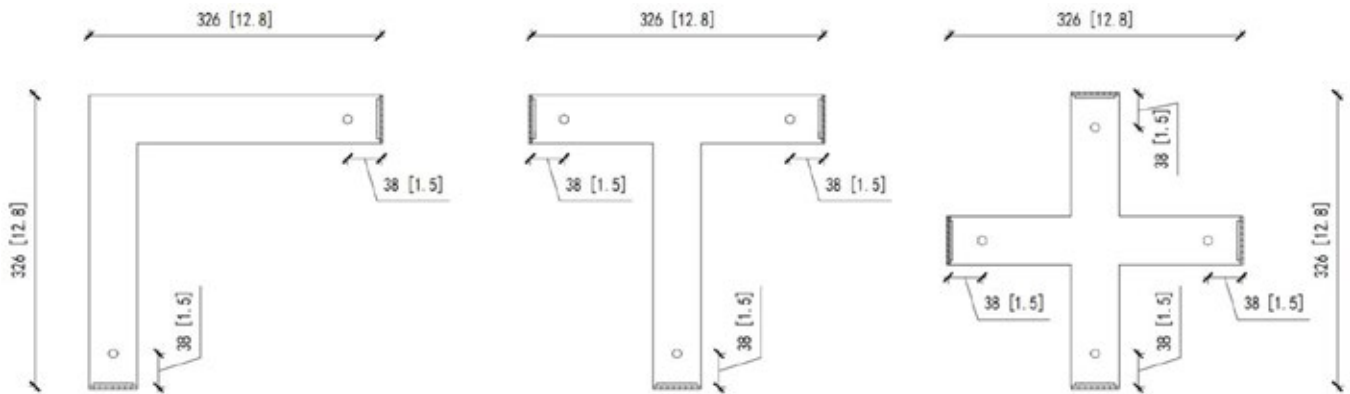
Wall mount

Connections



Change to DIY soft lens which can be cut by users for seamless continuous luminous run. Total connected load is $\leq 500W$ at 120V and $\leq 1000W$ at 277V.

Connectors Dimensions



Installation accessories

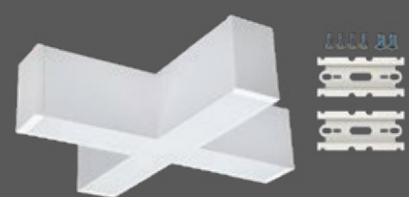
'L' connector



'T' connector



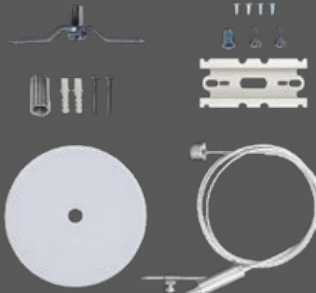
'X' connector



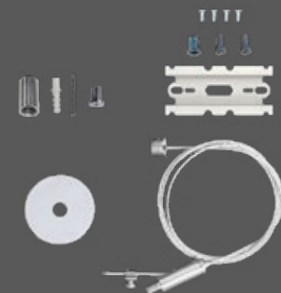
Power feed Suspension mount kit



Non-feed suspension kit, A type, 4" canopy



Non-feed suspension kit, B type, 2" canopy



Non-feed suspension kit, C type, ceiling nut



Power cord

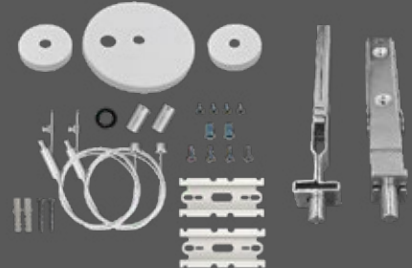
5-core, STJ

6-core, STJ

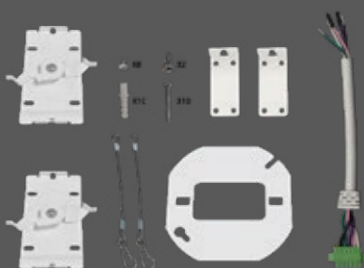


Black Power cord available

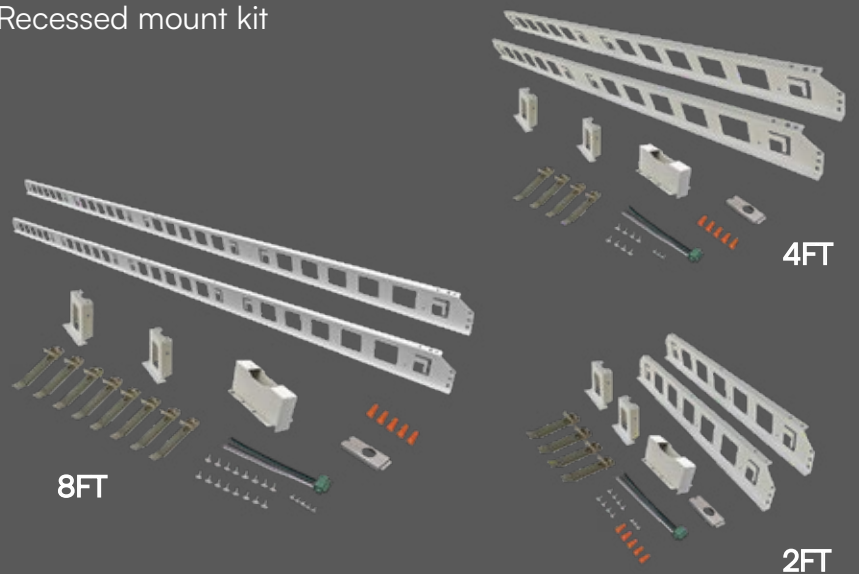
T-Grid suspension kit



Surface mount & Wall mount kit



Recessed mount kit



DC sensor installation kit

Option A, 2.5mm male audio connector sensor
Option B, Quick-Connect Sensor, Popular styling

Option C, Quick-Connect Sensor, Classic mushroom-head profile



Soft DIY-cut diffuser

49.2' length per roll

