



# VERSAPACK™

## Medium Traditional Wall Pack

Client: \_\_\_\_\_ Order #: \_\_\_\_\_  
 Project Name: \_\_\_\_\_ Type: \_\_\_\_\_ Qty: \_\_\_\_\_

### Performance Data

CRI  
75+

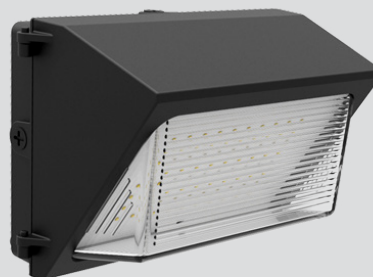
CCT  
3000K, 4000K, 5000K

Projected Lifetime  
50,000 Hours

Dimming  
0-10V Dimming Standard,  
100% down to 10%

Operating Temperature  
-40°C to +40°C Ambient

Warranty  
5 year Standard



TEMPERSWITCH™  
3000 | 4000 | 5000

5 Yr  
Warranty

### Description

The Versapack™ medium wall pack provides a cost-effective, durable and efficient exterior light source for any application with maximum performance and minimum maintenance. The Versapack™ delivers up to 128 lumens per watt of energy-efficient LED performance paired with a traditional design.

### Features

- Heavy duty two piece die cast aluminium housing is side hinged for ease of maintenance. Two captive stainless steel door fasteners.
- 1/2" threaded conduit entry with coin plug.
- Dark bronze polyester powder finish for excellent impact, corrosion and UV resistance.
- Power Factor: >.90; THD: <10%
- Clear prismatic borosilicate glass reflector is thermal/shock resistant.
- Temperswitch allows users to select between 5000K, 4000K, and 3000K in the field by simply switching an easily accessible three-position switch. Fixture comes set/standard at 40K.

# D470-LED

A

B

C

U

D

Z

E

F

G

### Ordering Information

#### A FIXTURE SERIES

D470-LED Medium Wall Pack

#### B WATTAGE/LUMENS

MW50 15/26/36/50W  
 MW82 16/35/53/82W

#### C CCT

304050 3000K-4000K-5000K

#### D VOLTAGE

U 120-277V

#### E FINISH

Z Bronze

#### F OPTIONS

T Push Button Photocell  
 E Emergency

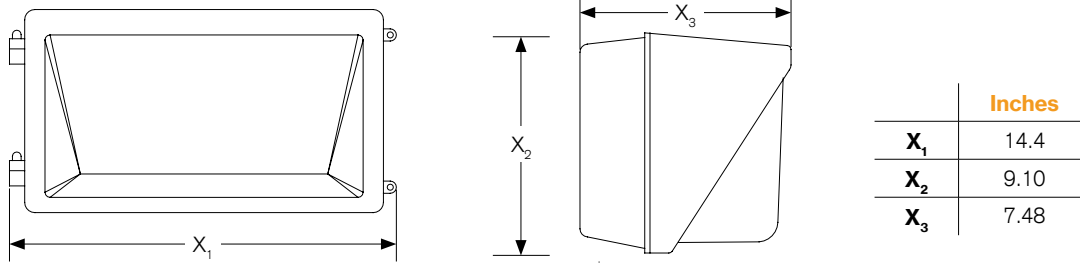
#### G WARRANTY<sup>2</sup>

- 5 Year Warranty

<sup>1</sup> Delivered lumens (4000K) - See lumen chart on page 2

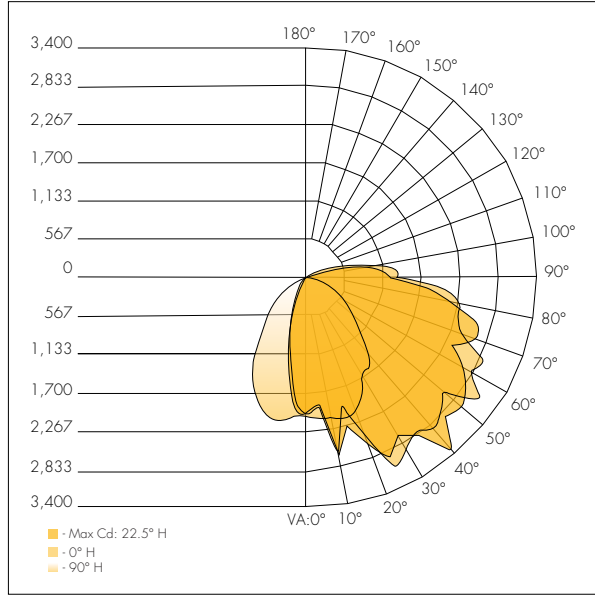
<sup>2</sup> 5 Year Warranty is Standard unless specified

## Dimensions

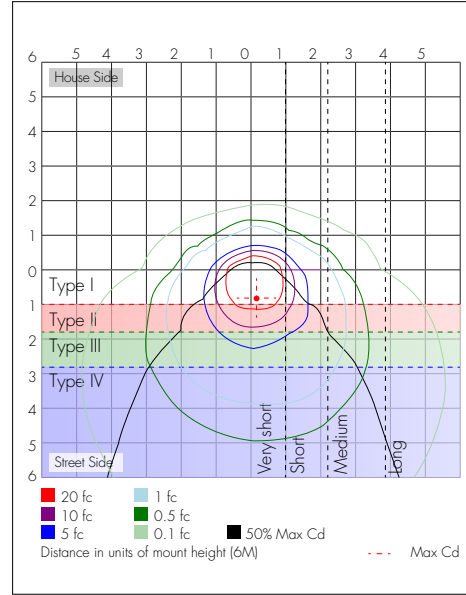


## Photometrics

Model 60W 4000K



Isofootcandle



Zonal Lumen Summary

Zone	Lumens	%Luminaire	%Luminaire
0-30	1,490.2	20.5%	20.5%
0-40	2,384.3	32.7%	32.8%
0-60	4,310.5	59.2%	59.2%
60-90	2,258.0	31%	31%
70-100	1,722.5	23.6%	23.7%
90-120	647.9	8.9%	8.9%
0-90	6,568.5	90.2%	90.3%
90-180	708.0	9.7%	9.7%
0-180	7,276.5	99.9%	100%

## Lumen Chart

	Wattage	3500K		4000K		5000K	
		Delivered Lumens	Efficacy	Delivered Lumens	Efficacy	Delivered Lumens	Efficacy
D470-LED20W	20	2400	120	2500	125	2540	127
D470-LED40W	40	5000	120	5000	125	5080	127
D470-LED60W	50	6250	120	6250	125	6250	127