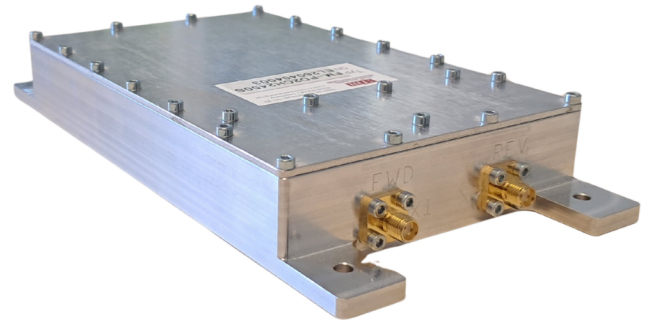


## GENERAL INFORMATION

The Power Detector FM-PD2CH2450S is designed for industrial drying and heating applications, as well as for research use in laboratory environments. The Power Detector provides both numerical and graphical displays of forward and reflected RF power to support precise process monitoring.

Process data can be stored using the display unit. An analog output is available for monitoring forward and reflected RF power in combination with a programmable logic controller (PLC).

The Power Detector can operate as a stand-alone measurement device or, with customer-specific calibration, in combination with a circulator/isolator, Isolauncher, or a directional coupler.



## SPECIFICATION

### Electrical and Technical Data

Frequency range	2400 MHz - 2500 MHz
Dimensions (L x W x H)	204 mm x 100 mm x 30 mm
Power supply	24 V <sub>DC</sub>

### Analog Output (Forward and reflected power)

Voltage mode	0 V <sub>DC</sub> - 10 V <sub>DC</sub>
--------------	--

### RF Inputs

Absolute maximum RF input power	20 dBm (100 mW)
Maximum calibrated RF input power	10 dBm (10 mW)
Minimum calibrated RF input power	-30 dBm (1 μW)

The maximum and minimum calibrated RF input power values define the usable range for stand-alone operation. In all other cases, the FM Power Detector is considered customer-calibrated, and a separate calibration note is provided.

