

the commons

Chippendale
Photography Studio
at The Commons.



Capture the Perfect Shot in our Photography Studios

Discover our exquisite Photography Studio in Sydney, offering a seamless hire experience. Immerse yourself in versatile spaces meticulously tailored to meet your every photography requirement. Equipped with state-of-the-art amenities, our studios are thoughtfully designed to capture and preserve timeless moments with unrivaled precision.

Features and Inclusive Amenities

Our photography studio features a cyclorama wall, a dedicated hair and make-up station, lounge area, and private dressing room. The space is fully equipped with reverse-cycle air conditioning and three-phase power, however they are not acoustically treated.



Cyclorama wall



Make-up Station



Stereo System



Water, Coffee & Tea



Clothing Rack



2 x C-stands



Sand Bags



Wifi



Change room



Shower Facilities

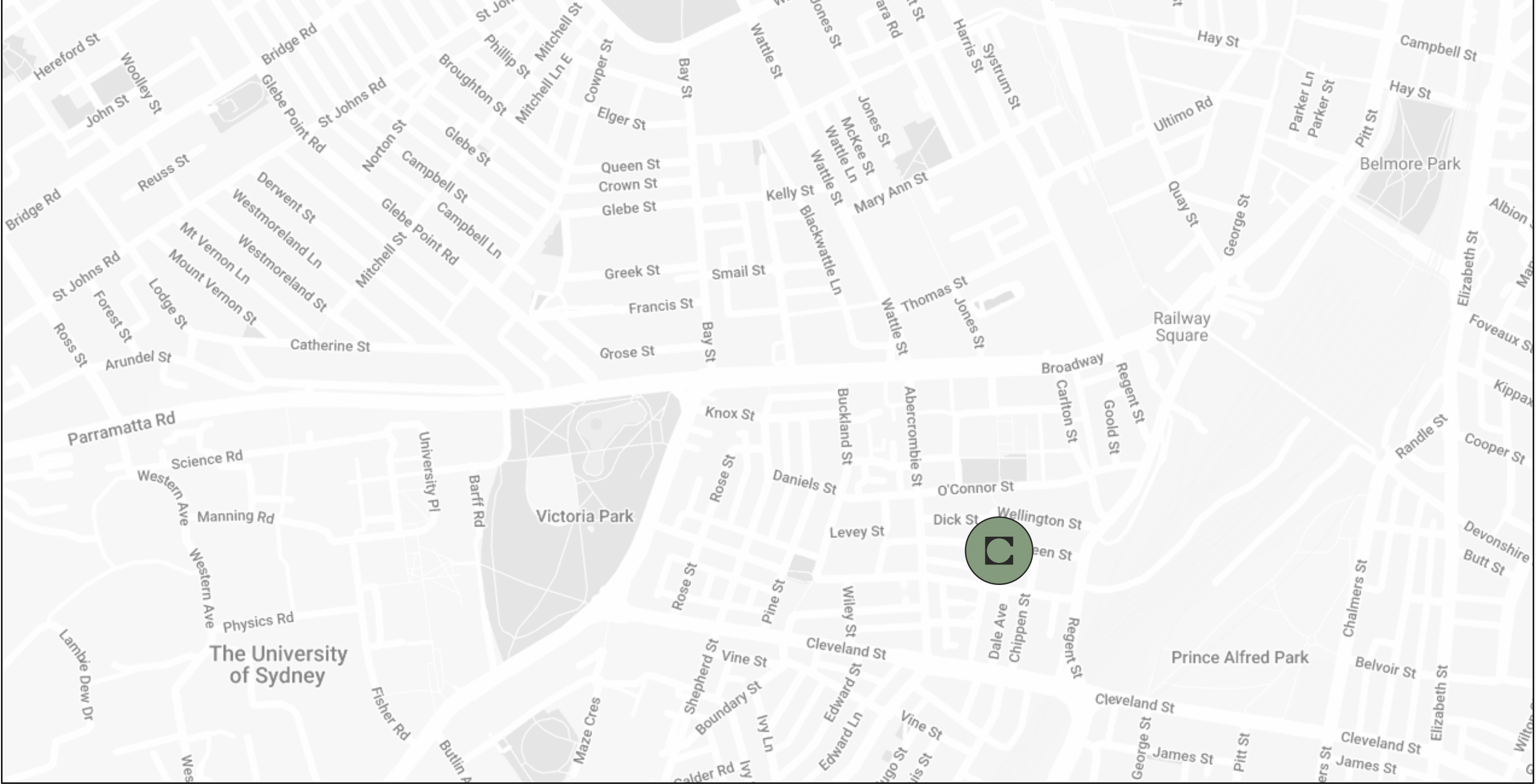


Steamer



Work Bench

Our Chippendale Location

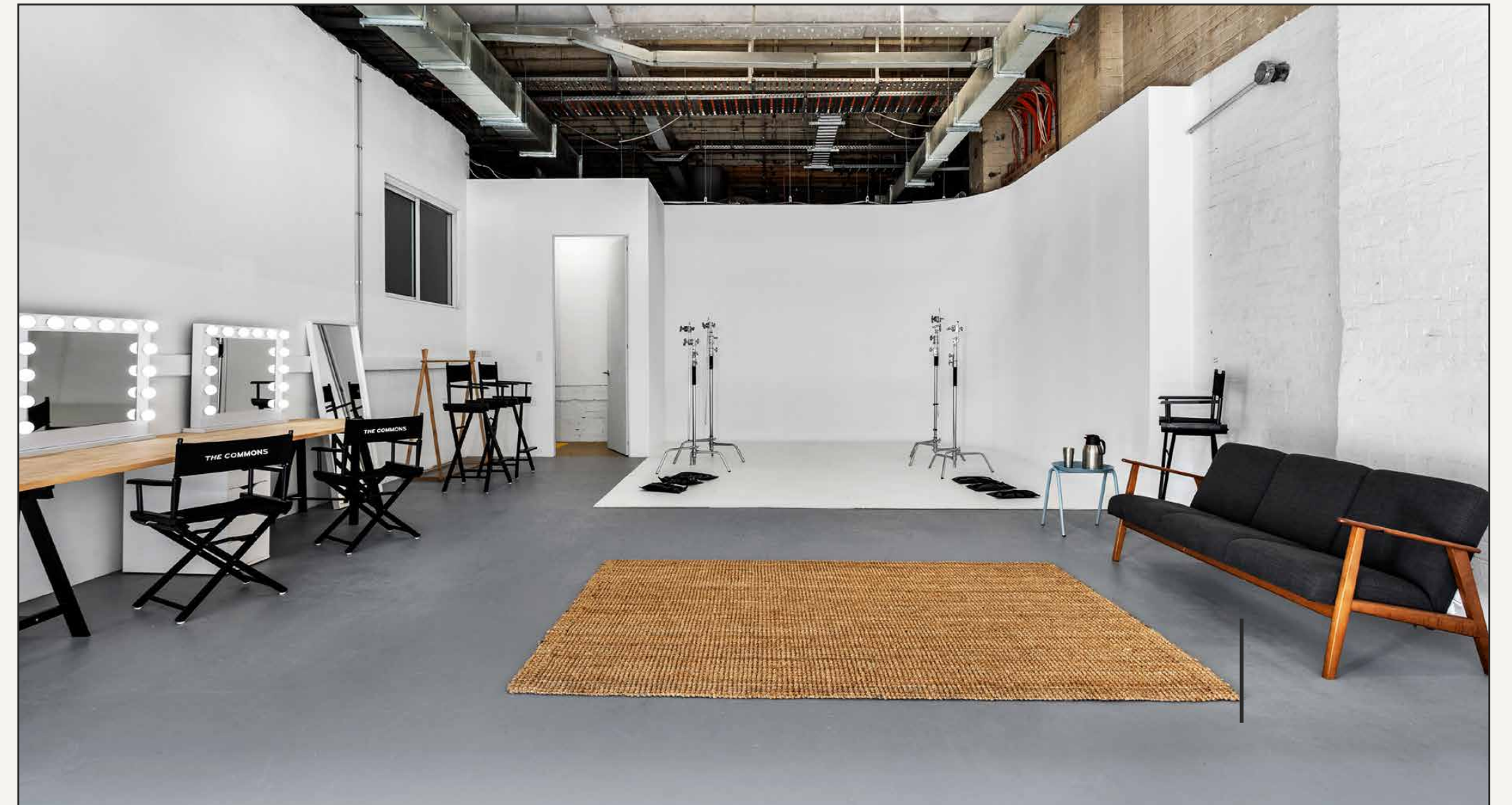
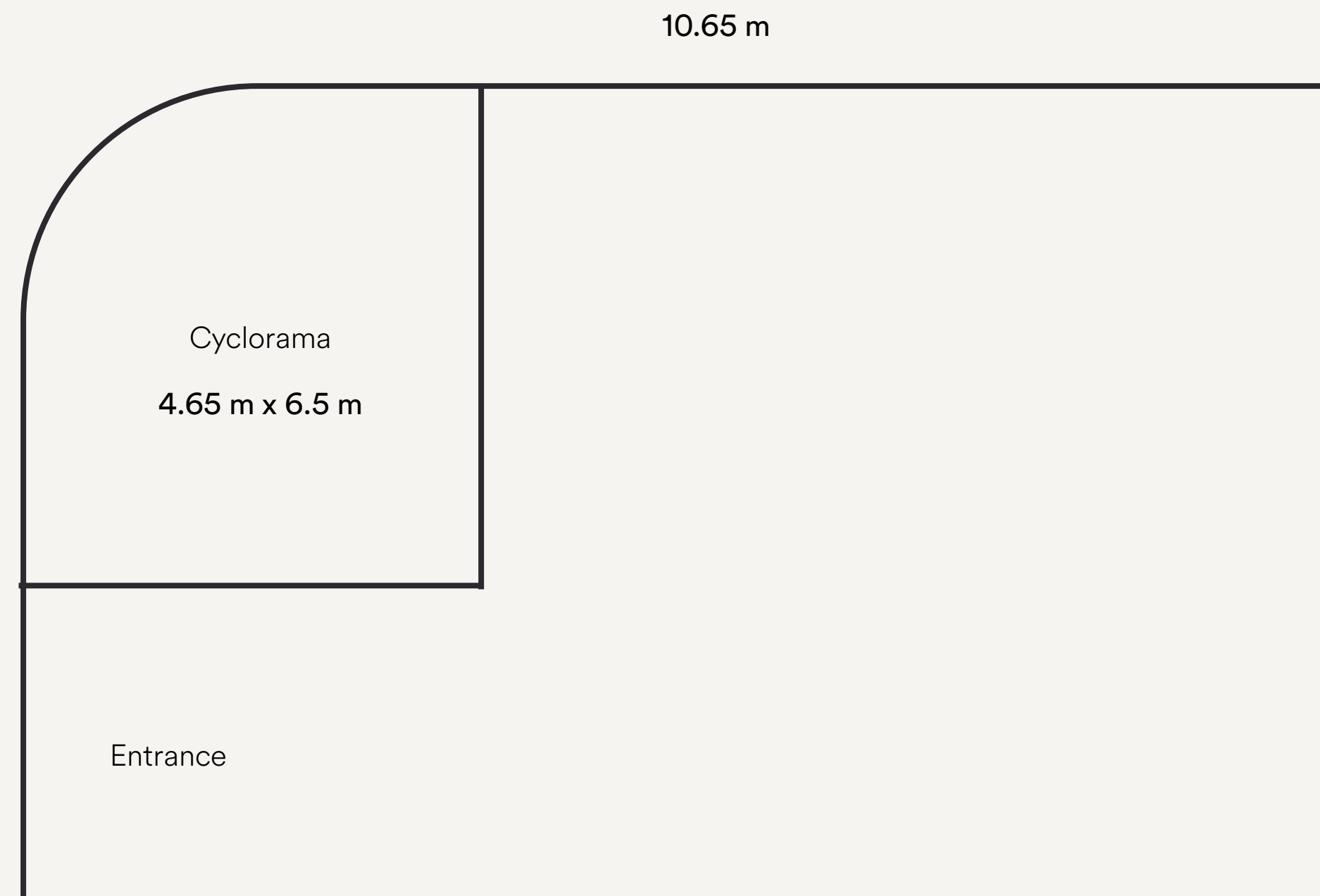


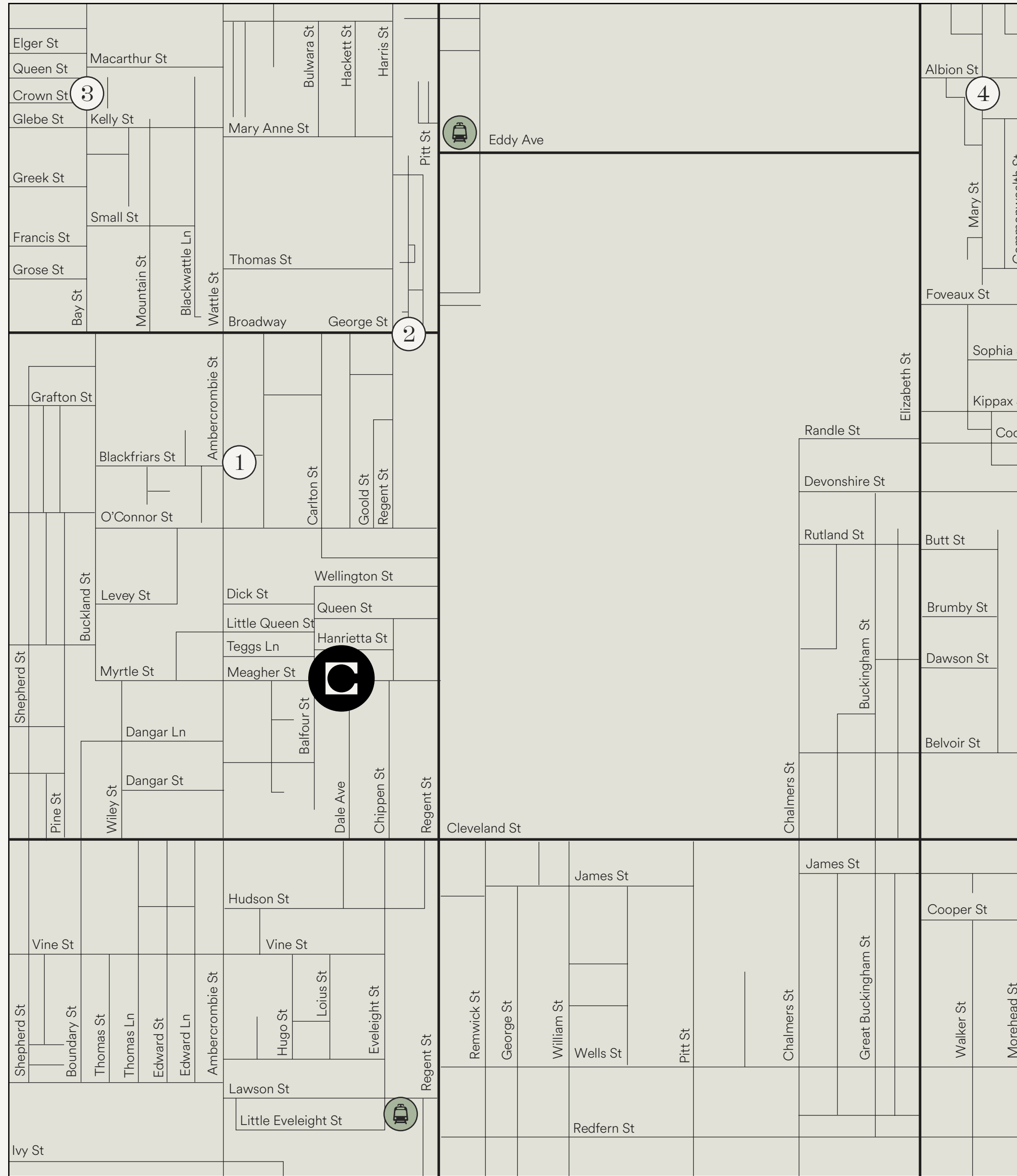
Studio Hire Opening Hours

Monday to Sunday

8:30 am to 5:30 pm

Chippendale Photography Studio





Transport Options

20-40 Meagher Street, Chippendale NSW 2008

Transport Options



Paid Parking

- 1. Carparkit** (4-minute walk)
4 Central Park Avenue, Chippendale NSW 2008
\$30.00 flat rate

- 2. Divvy** (8-minute walk)
2 Lee Street, Haymarket NSW 2000
\$15.00/day

- 3. Divvy** (10-minute walk)
359 Crown Street, Chippendale NSW 2008
\$25.00/day

- 4. Carparkit** (7-minute walk)
28 Albion Street, Surry Hills NSW 2010
\$40.00/day



Train

- Central Station (10-minute walk)
- Redfern Station (10-minute walk)

Capturing Moments for Top Brands

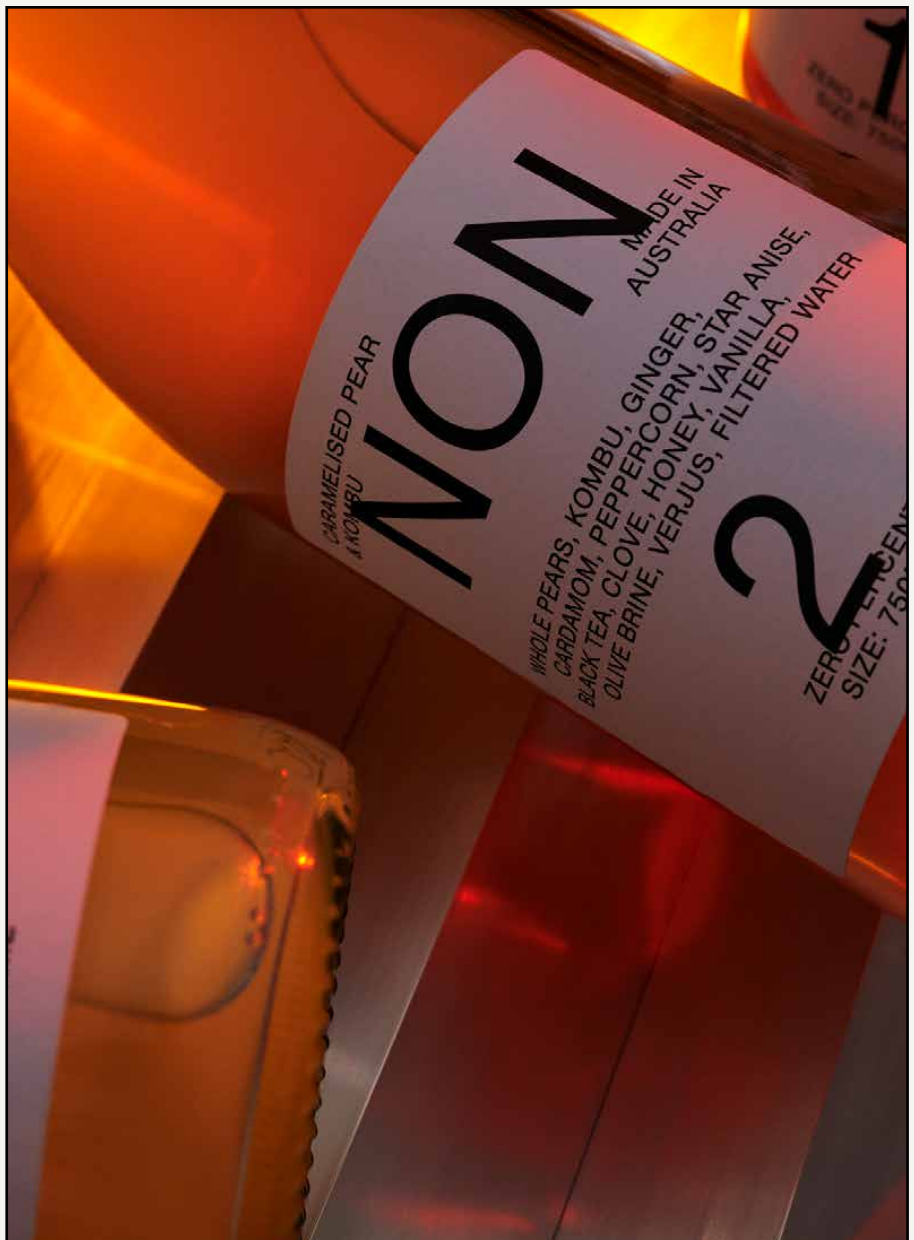
PROUDLY EST. 2013
••••
FOUR PILLARS
SMALL AUSTRALIAN
DISTILLERY

SUNNIES STUDIOS

JULY

KOKO BLACK

**who
gives a
crap**



the commons

Captured in our Studios

Get in Touch

1300 848 568

hello@thecommons.com.au

www.thecommons.com.au

the commons