

the commons

Event Space Hire  
at The Commons  
George Street.



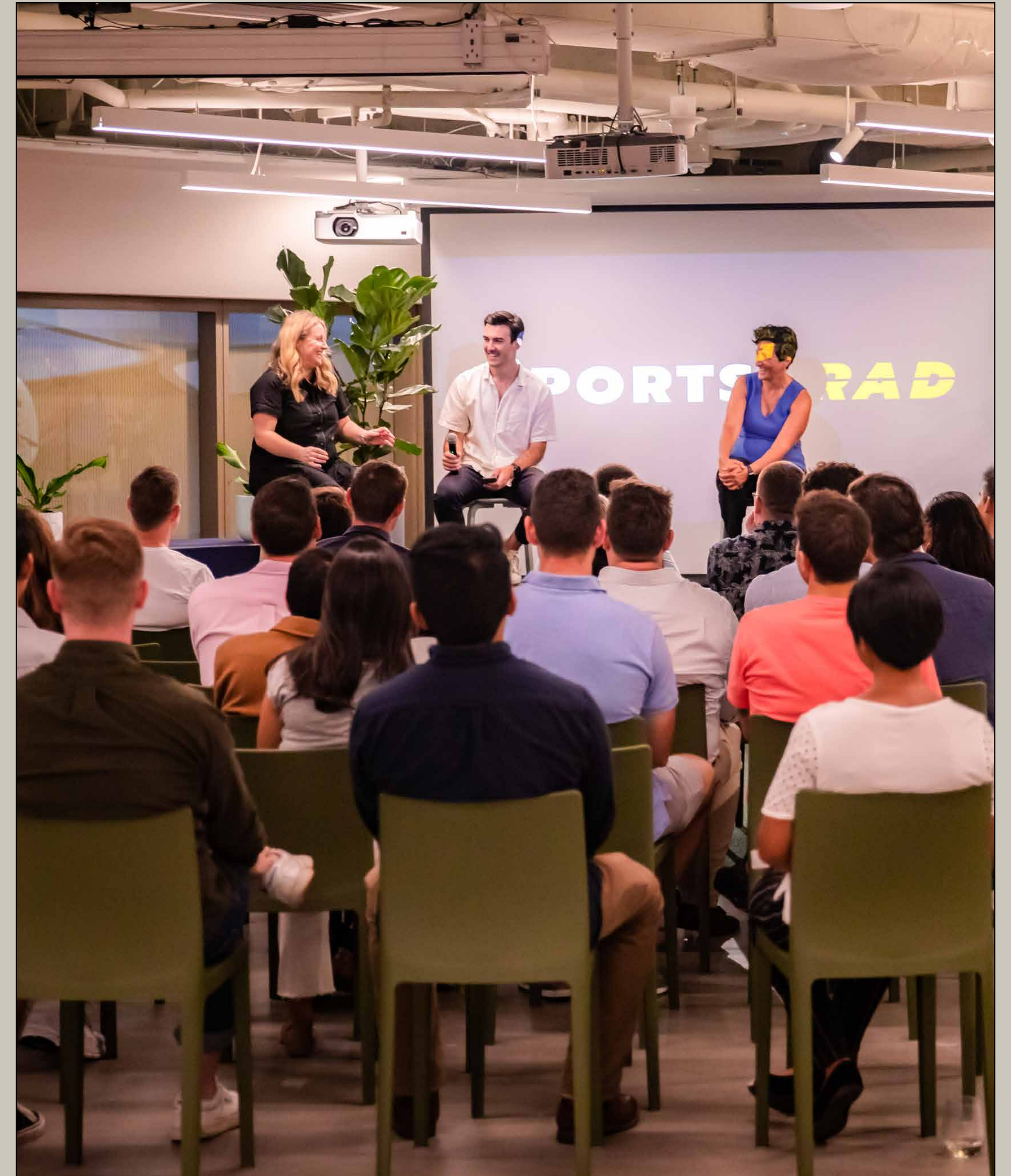
# The Commons is a creative shared workspace designed for you.

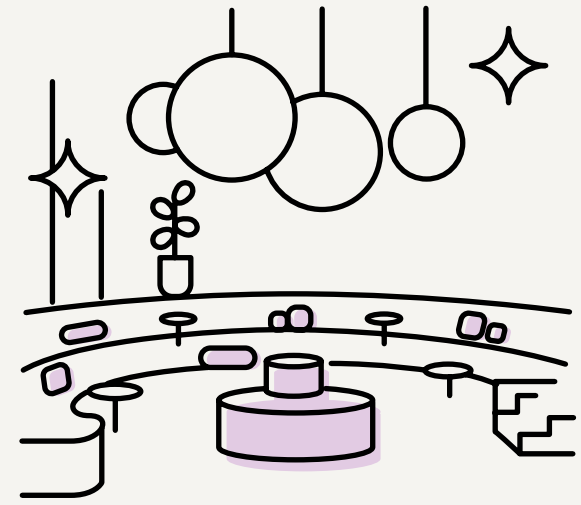
Our mission is to provide an environment that allows businesses to grow and individuals to flourish. Through continuous research and mindful consideration of every aspect within our spaces.

# Host your next event at one of our unique and beautifully designed locations.

We make providing high quality events easy, with a diverse range of spaces catered for your colleagues, clients or audience. With various social and dynamic space, we offer an environment that's perfect for hosting intimate talks and launches, as well as large scale performances, meetings and activations. With some of our spaces allowing up to 250 attendees and as little as 50 for intimate events, we have a space for your next event.

At The Commons, we're experienced when it comes to Events as we host a diverse range of events in-house each week. We offer top of the range facilities with the inclusion of sound systems, wireless handheld microphones, projectors and screens.





## Premium Venue

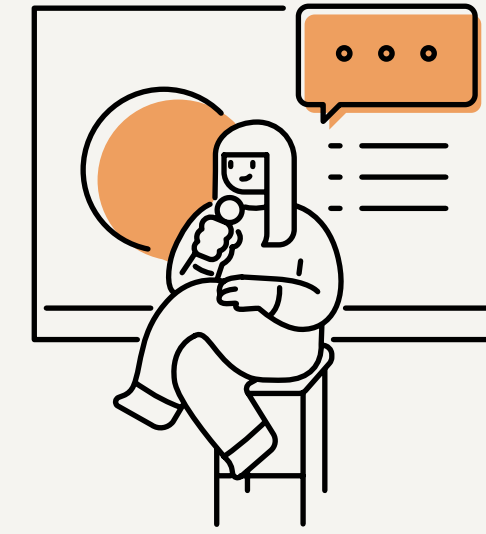
With over 10 locations to choose from, one of our unique venues is sure to please.

Each event space is a light-filled space that provides a stunning backdrop for any event.



## Dedicated Team

Our experienced team can help you execute a successful event.



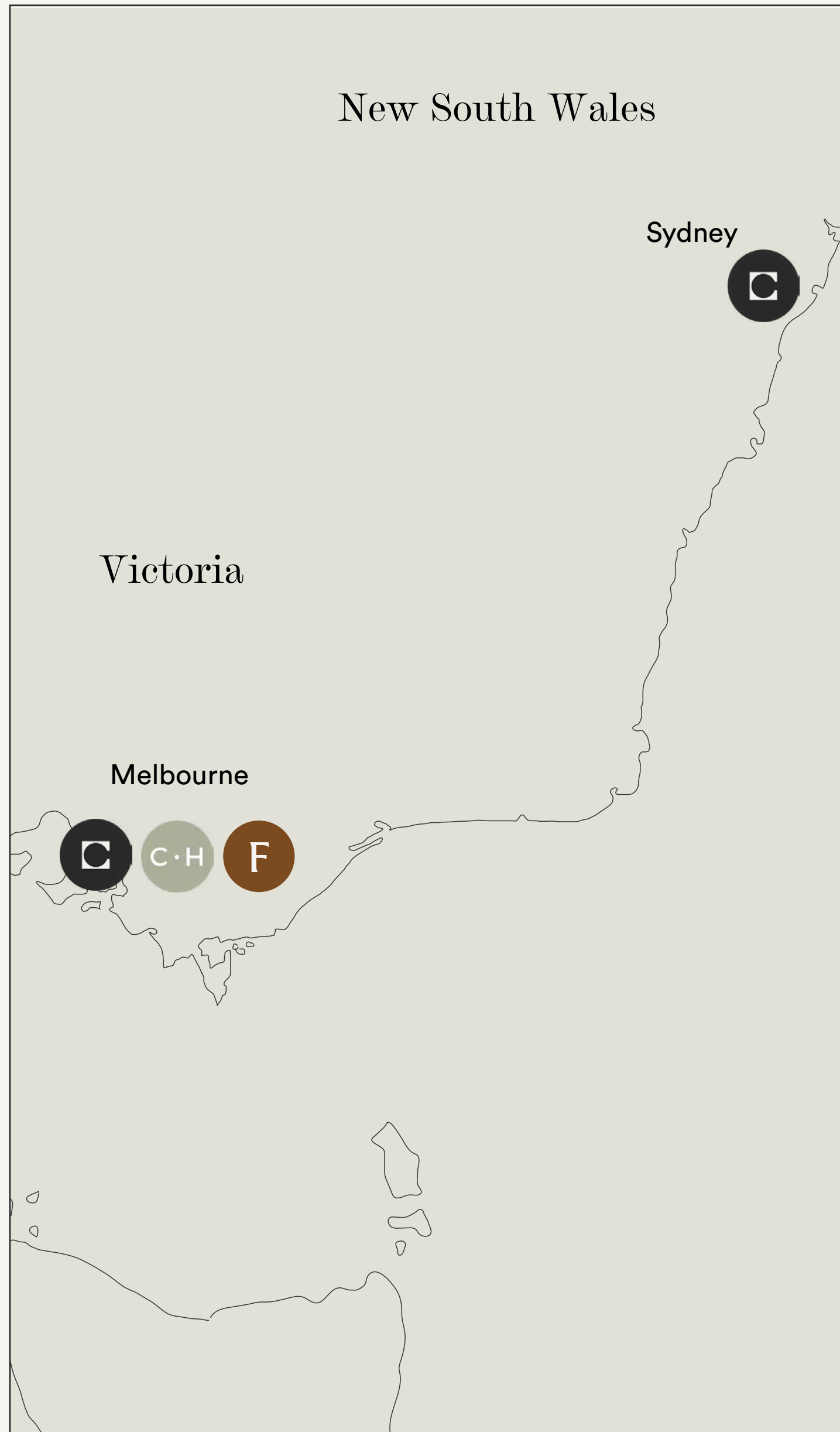
## Facilities

Our event spaces are designed to cater to various needs. Depending on the space, you will have access to projectors, screens, microphones, speakers, AV equipment, and more.



## Catering

Catering is available from nearby restaurants and cafes, or BYO food and beverages is available upon request. We also offer a drinks package for \$20 + GST per person, providing unlimited beer and seltzer for the duration of the event.



# The Commons Locations

## Melbourne

### Collingwood (Gipps Street)

36-38 Gipps Street, Collingwood, VIC 3066

### Collingwood (Wellington Street)

54 Wellington Street, Collingwood, VIC 3066

### Collins Street | Coming Soon

55 Collins Street, Melbourne, VIC 3000

### Cremorne

10-20 Gwynne Street, Cremorne, VIC 3121

### South Melbourne

80 Market Street, South Melbourne, VIC 3205

### South Yarra

11 Wilson Street, South Yarra, VIC 3141

### QV

3 Albert Coates Lane, Melbourne, VIC 3000

### Central House South Melbourne

101 Moray St, South Melbourne, VIC 3205

### Central House Toorak

489-505 Toorak Road, Toorak, VIC 3142

### Forum Cremorne

65 Dover Street, Cremorne, VIC 3121

## Sydney

### Chippendale

20-40 Meagher Street, Chippendale, NSW 2008

### George Street

388 George Street, Sydney, NSW 2000

### Martin Place | Coming Soon

39 Martin Place, Sydney, NSW 2000

### Surry Hills

285A Crown Street, Surry Hills, NSW 2010

### York Street

32 York Street, Sydney, NSW 2000

# The Commons George Street

388 George Street, Sydney, NSW 2000

Surrounded by cafés, restaurants and high end shopping, The Commons George Street is at the heart of the city. With access to inspirational cultural institutions like the Contemporary Art Museum and the Art Gallery of NSW, this location is a wonderful place to foster creativity and community.

With city views from the Outdoor Terrace lead from the Kitchen & Dining Area, this venue is perfect for large scale entertaining, with accesibility made easy via transport and within the space.





the commons



Our Location



# Kitchen & Dining Area

## Capacity

250 standing

150 seated

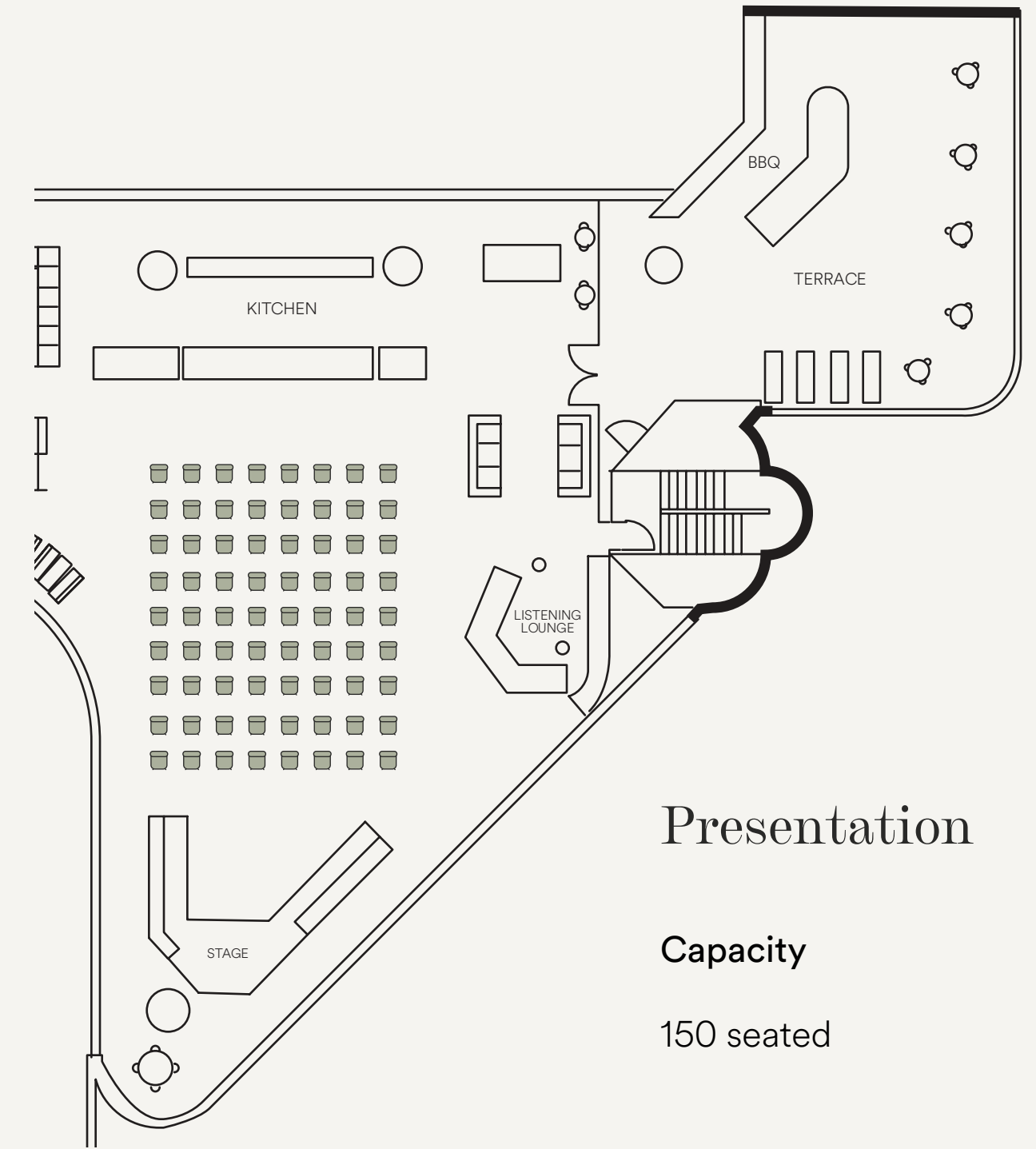
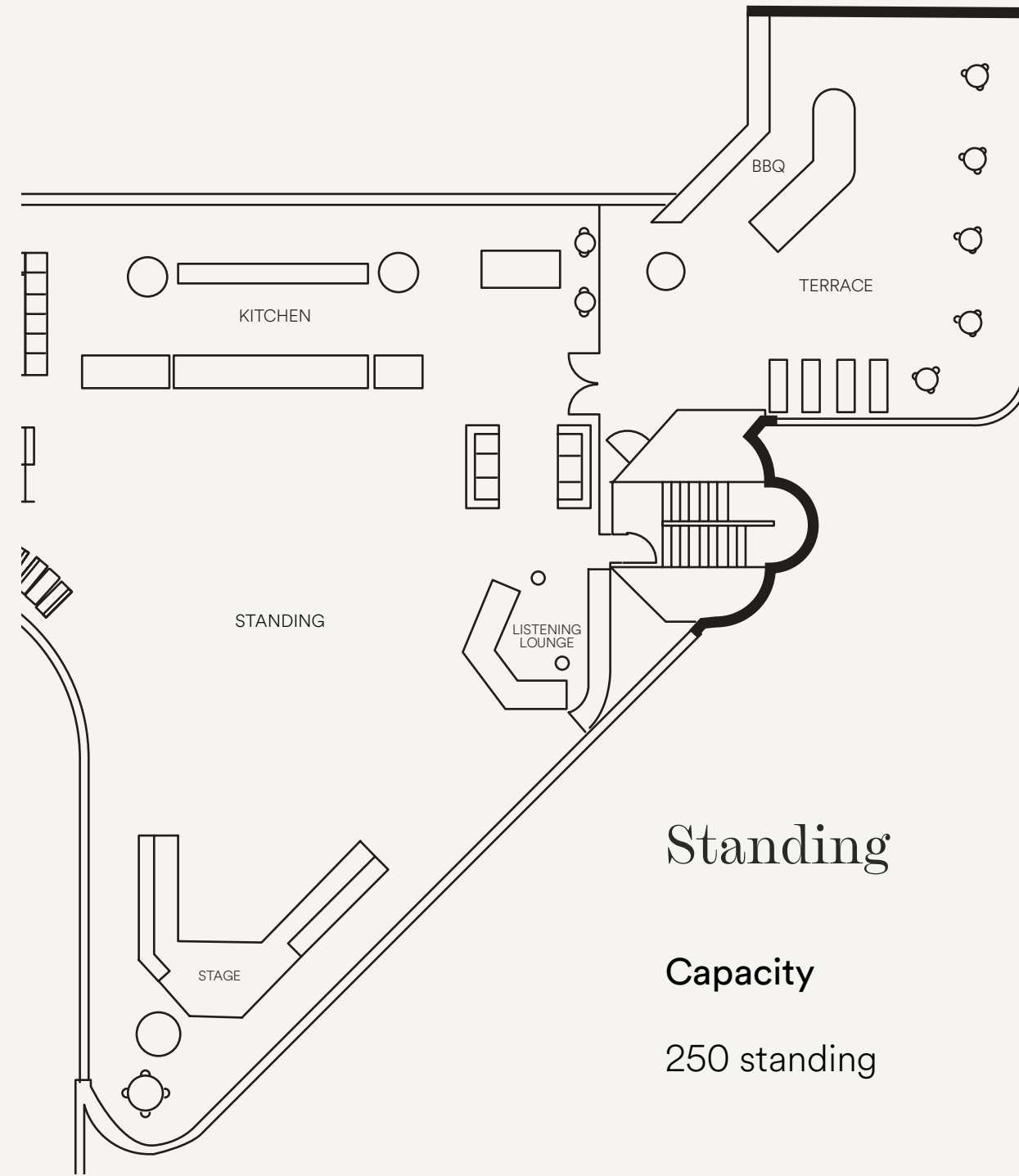
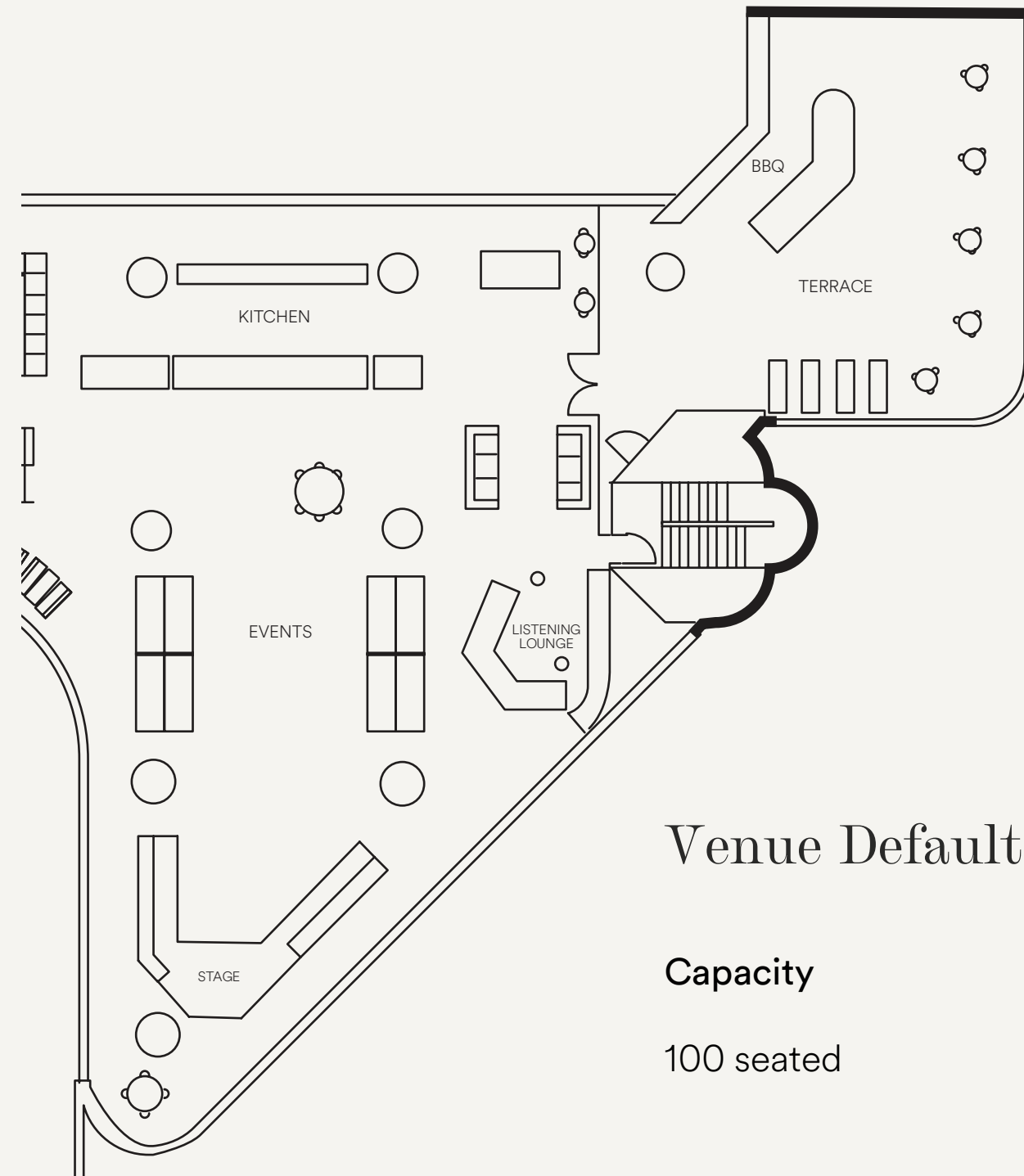
Dimensions 200sqm

## Features

- Indoor kitchen and dining area
- Outdoor terrace with city view, including BBQ and outdoor speakers
- Sound system with one wireless microphone
- 2 Projectors available with screens
- Stage
- Arcade Machine,+ Ping Pong table
- Beer + Cider Kegs

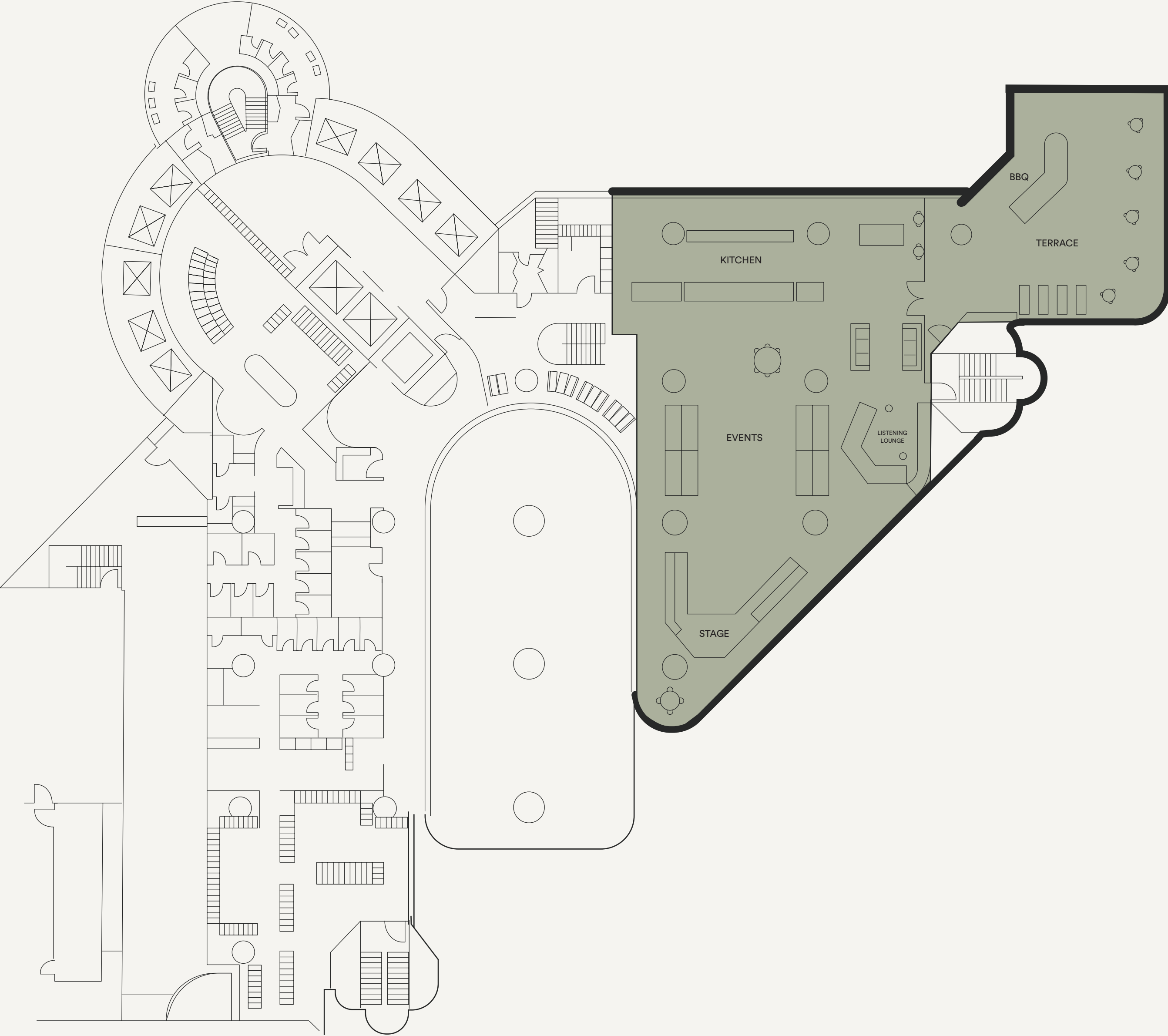
# Floor Plan Options

## Kitchen & Dining Area



# Floor Plan Level 1

Kitchen & Dining Area





# Terrace

## Capacity

100 standing

Dimensions 65 sqm

## Features

- City view
- BBQ
- Outdoor speaker
- Sun lounges
- Tables and chairs
- Powerpoint
- Outdoor beverage taps



# Outdoor Forest

## Capacity

100 standing

Dimensions 30 sqm

## Features

- Outdoor speaker
- Levelled seating
- Natural light



# Location

388 George St, Sydney, NSW 2000

## Transport Options

### Paid Parking

- 1. Secure Parking** (1-minute walk)  
345 - 363 George Street, Sydney, NSW 2000  
\$20.00/day

- 2. Secure Parking** (3-minute walk)  
Pitt Street, Sydney, NSW 2000  
\$29.00/day

- 3. Wilson Parking** (4 min walk)  
44 Market St, Sydney, NSW 2000  
\$30.00/day

### Bus

- Route 324, 325 Wynyard station, York St
- Route 343 Martin Place Stand E
- Route 120 QVB

### Train

- Wynard Station (5-minute walk)
- Townhall Station (4-minute walk)

### Light rail

- Wynard Station (5-minute walk)
- St James (5-minute walk)
- Martin Place (5-minute walk)

# Get in Touch

1300 848 568

[events@thecommons.com.au](mailto:events@thecommons.com.au)

[www.thecommons.com.au](http://www.thecommons.com.au)

the commons