

the commons

Event Space Hire  
at The Commons  
Wellington Street.



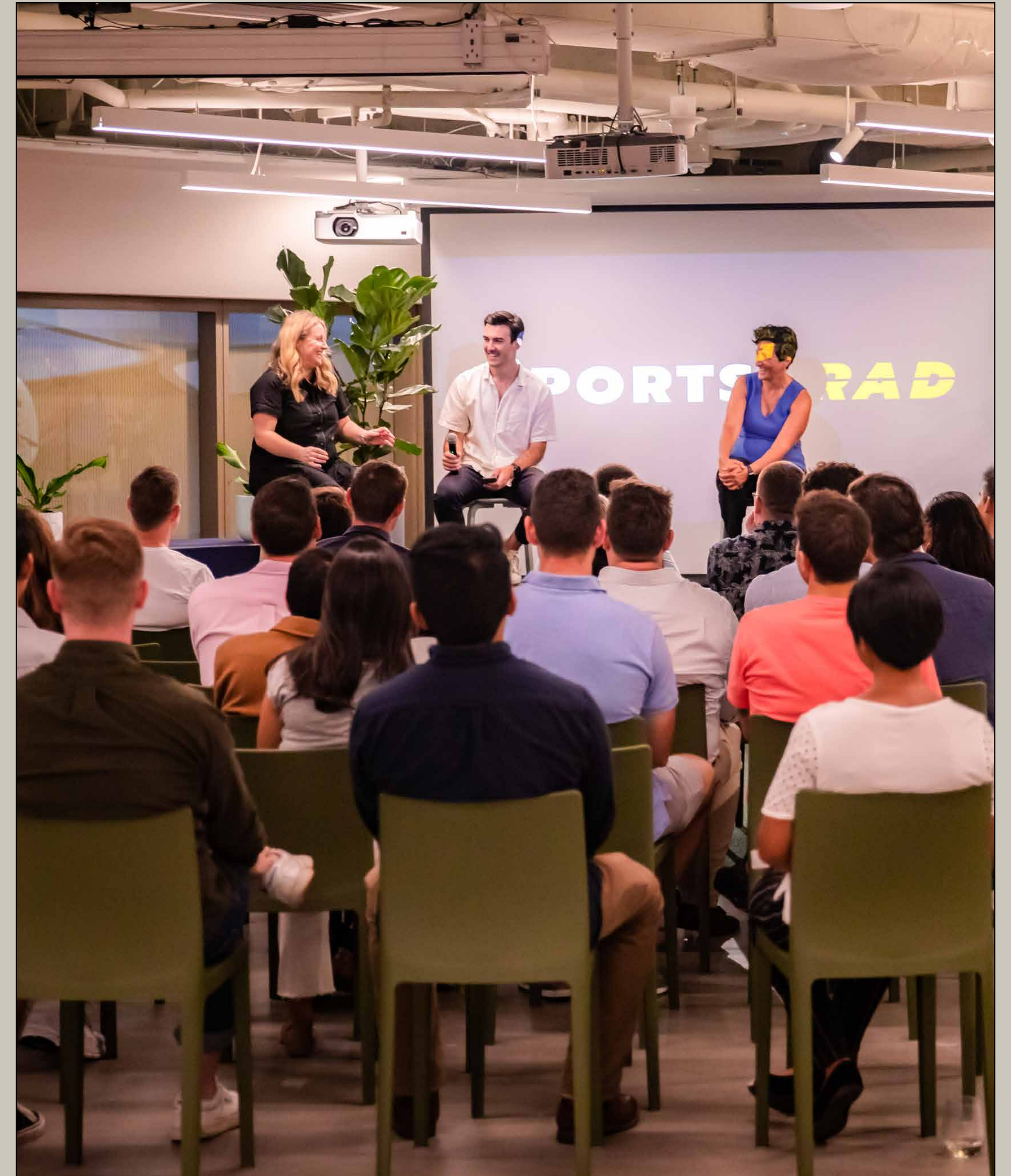
# The Commons is a creative shared workspace designed for you.

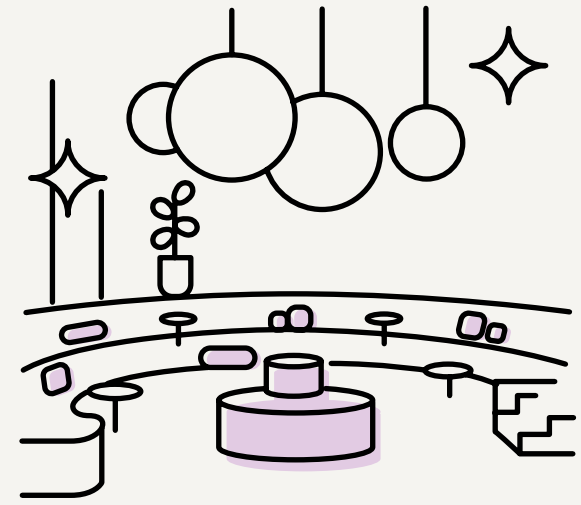
Our mission is to provide an environment that allows businesses to grow and individuals to flourish. Through continuous research and mindful consideration of every aspect within our spaces.

# Host your next event at one of our unique and beautifully designed locations.

We make providing high quality events easy, with a diverse range of spaces catered for your colleagues, clients or audience. With various social and dynamic space, we offer an environment that's perfect for hosting intimate talks and launches, as well as large scale performances, meetings and activations. With some of our spaces allowing up to 250 attendees and as little as 50 for intimate events, we have a space for your next event.

At The Commons, we're experienced when it comes to Events as we host a diverse range of events in-house each week. We offer top of the range facilities with the inclusion of sound systems, wireless handheld microphones, projectors and screens.





## Premium Venue

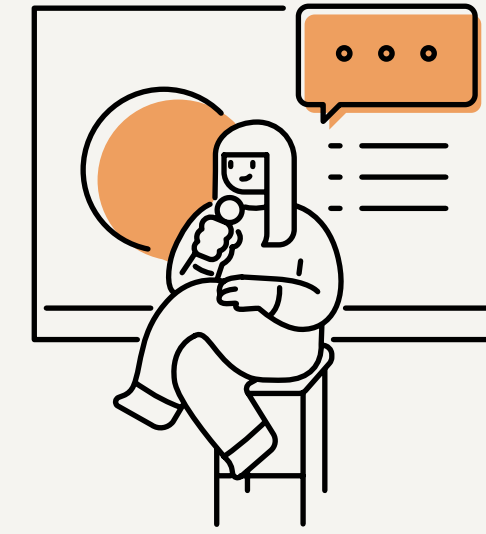
With over 10 locations to choose from, one of our unique venues is sure to please.

Each event space is a light-filled space that provides a stunning backdrop for any event.



## Dedicated Team

Our experienced team can help you execute a successful event.



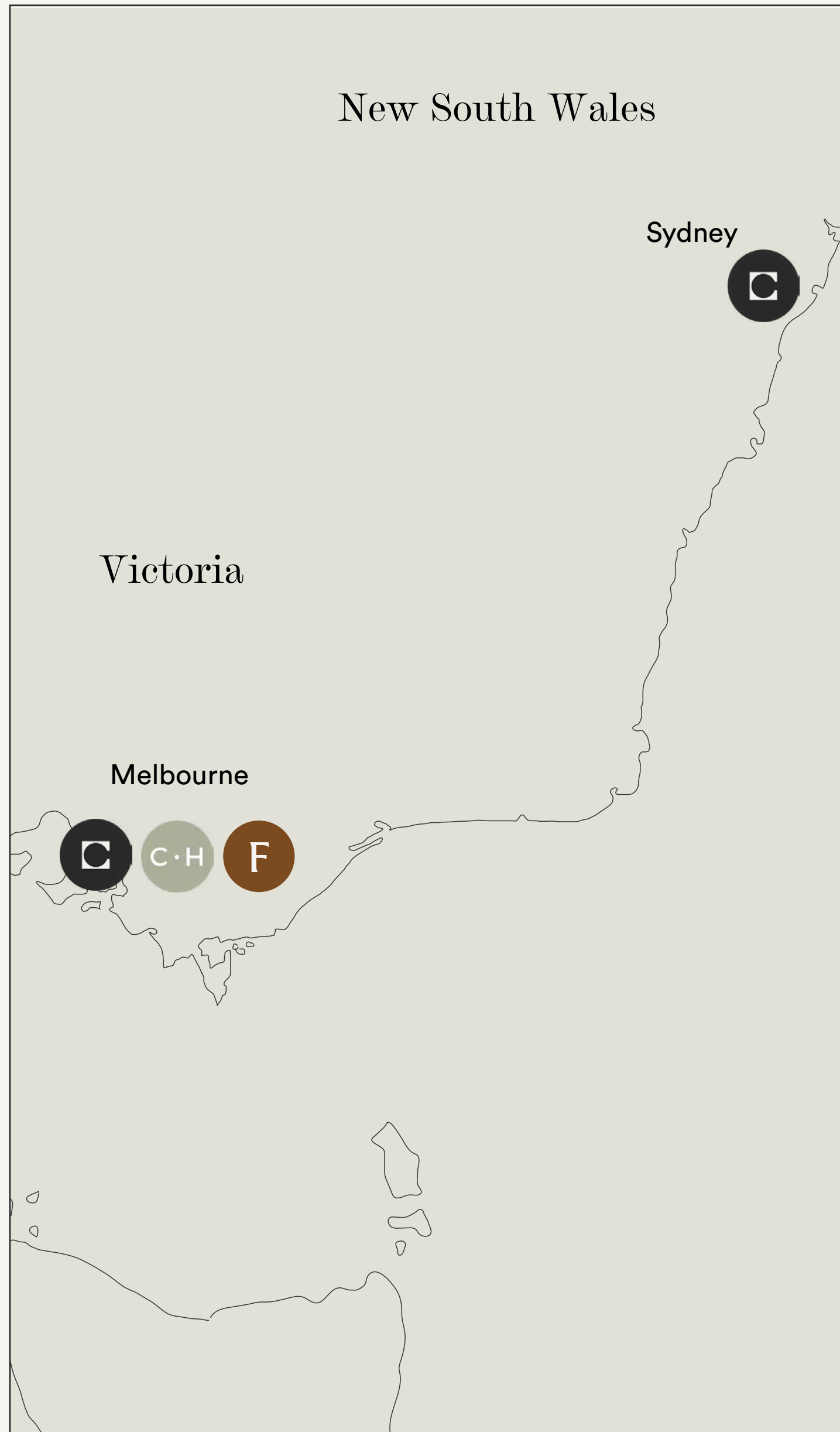
## Facilities

Our event spaces are designed to cater to various needs. Depending on the space, you will have access to projectors, screens, microphones, speakers, AV equipment, and more.



## Catering

Catering is available from nearby restaurants and cafes, or BYO food and beverages is available upon request. We also offer a drinks package for \$20 + GST per person, providing unlimited beer and seltzer for the duration of the event.



# The Commons Locations

## Melbourne

### Collingwood (Gipps Street)

36-38 Gipps Street, Collingwood, VIC 3066

### Collingwood (Wellington Street)

54 Wellington Street, Collingwood, VIC 3066

### Collins Street | Coming Soon

55 Collins Street, Melbourne, VIC 3000

### Cremorne

10-20 Gwynne Street, Cremorne, VIC 3121

### South Melbourne

80 Market Street, South Melbourne, VIC 3205

### South Yarra

11 Wilson Street, South Yarra, VIC 3141

### QV

3 Albert Coates Lane, Melbourne, VIC 3000

### Central House South Melbourne

101 Moray St, South Melbourne, VIC 3205

### Central House Toorak

489-505 Toorak Road, Toorak, VIC 3142

### Forum Cremorne

65 Dover Street, Cremorne, VIC 3121

## Sydney

### Chippendale

20-40 Meagher Street, Chippendale, NSW 2008

### George Street

388 George Street, Sydney, NSW 2000

### Martin Place | Coming Soon

39 Martin Place, Sydney, NSW 2000

### Surry Hills

285A Crown Street, Surry Hills, NSW 2010

### York Street

32 York Street, Sydney, NSW 2000

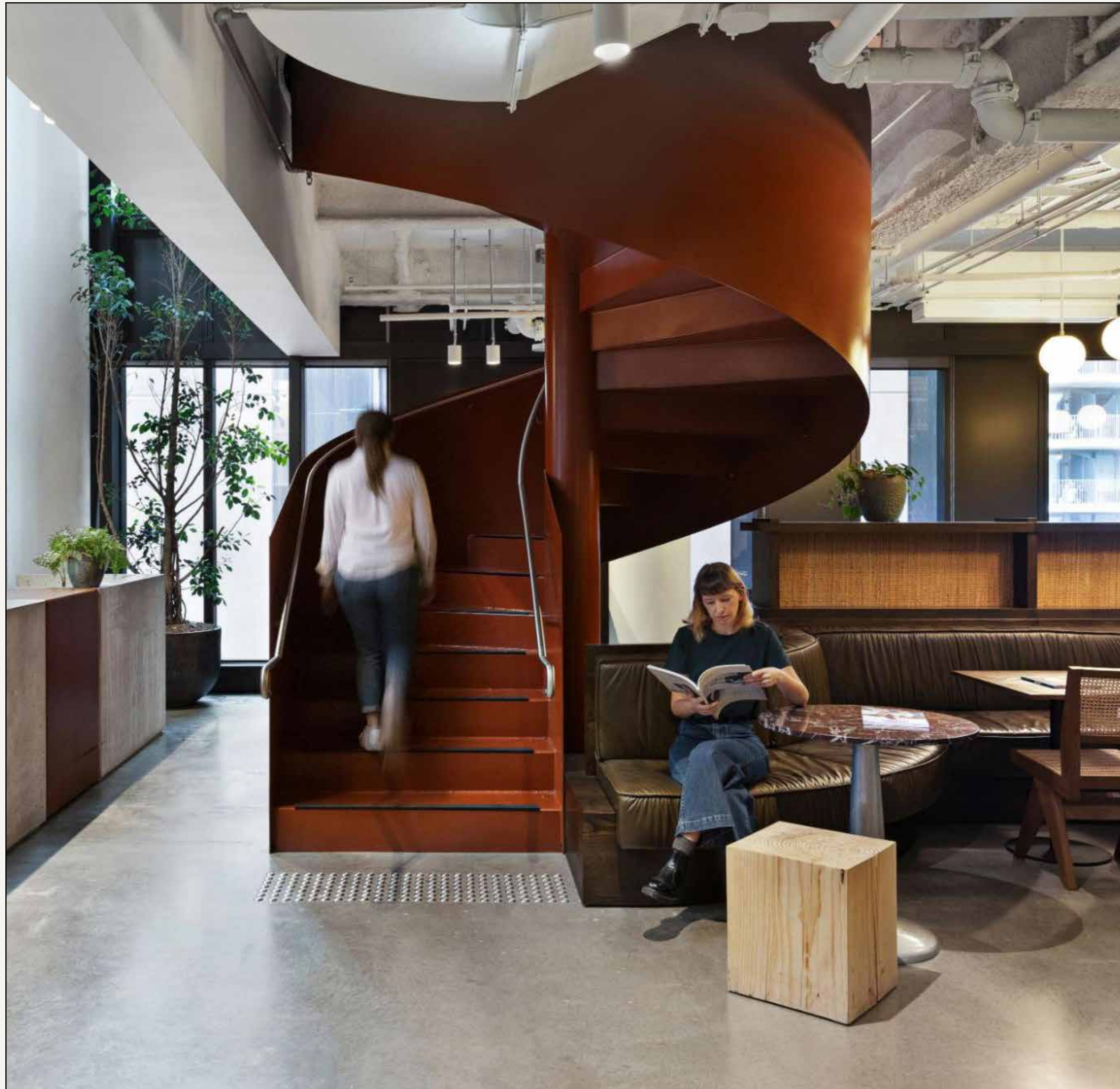
# The Commons Wellington Street

54 Wellington Street, Collingwood VIC 3066

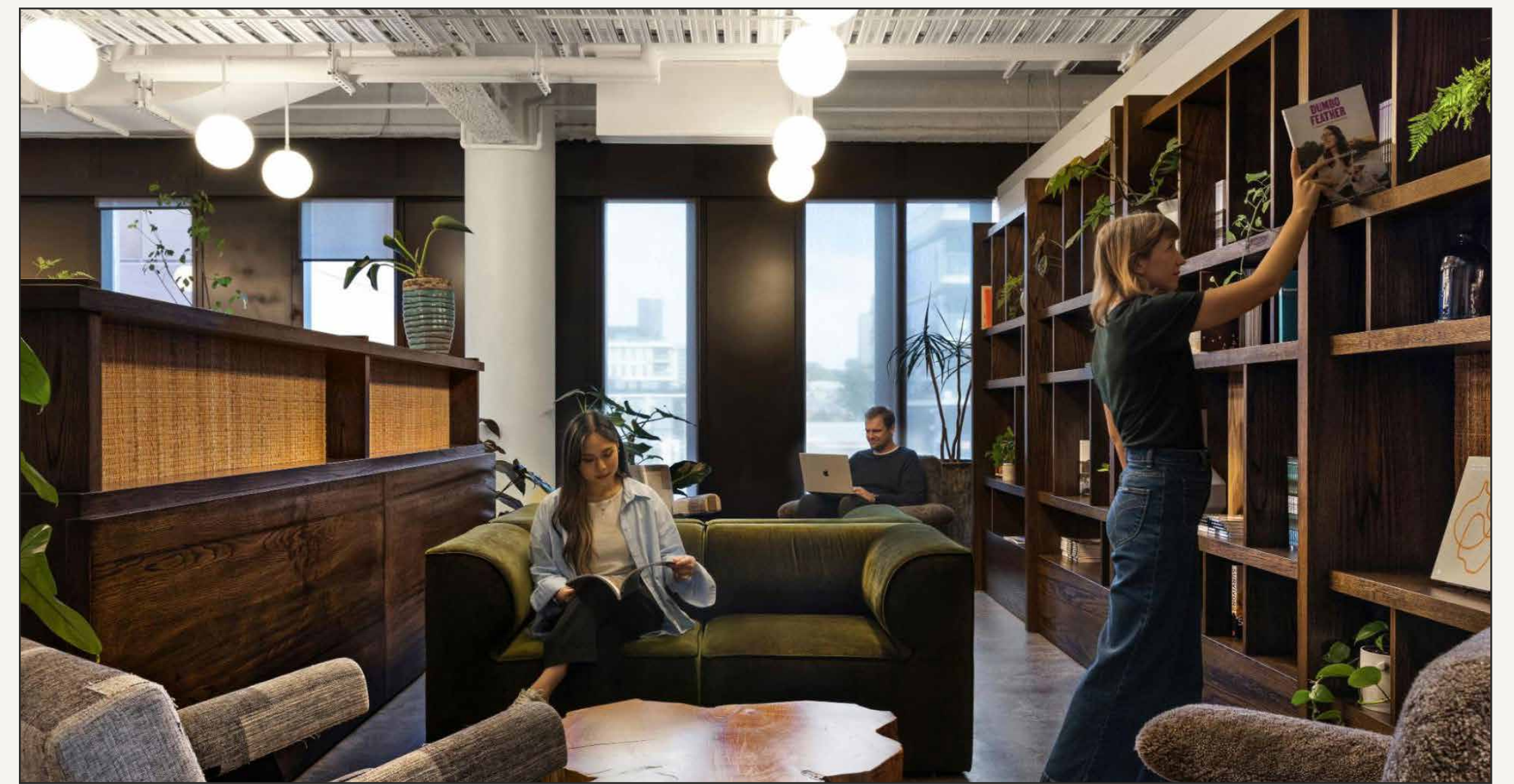
Collingwood is famous for its historical buildings, 19th-century architecture and factories that are still in use. Collingwood is an exciting mix of established brands and progressive creatives.

The Commons Wellington Street is our second largest location in Melbourne, thoughtfully designed with beautiful natural light, and an ambient setting for night events. With an amphitheatre designed for comfort, this space creates a sense of warmth, providing an atmosphere perfect for any intimate, or larger scale event.

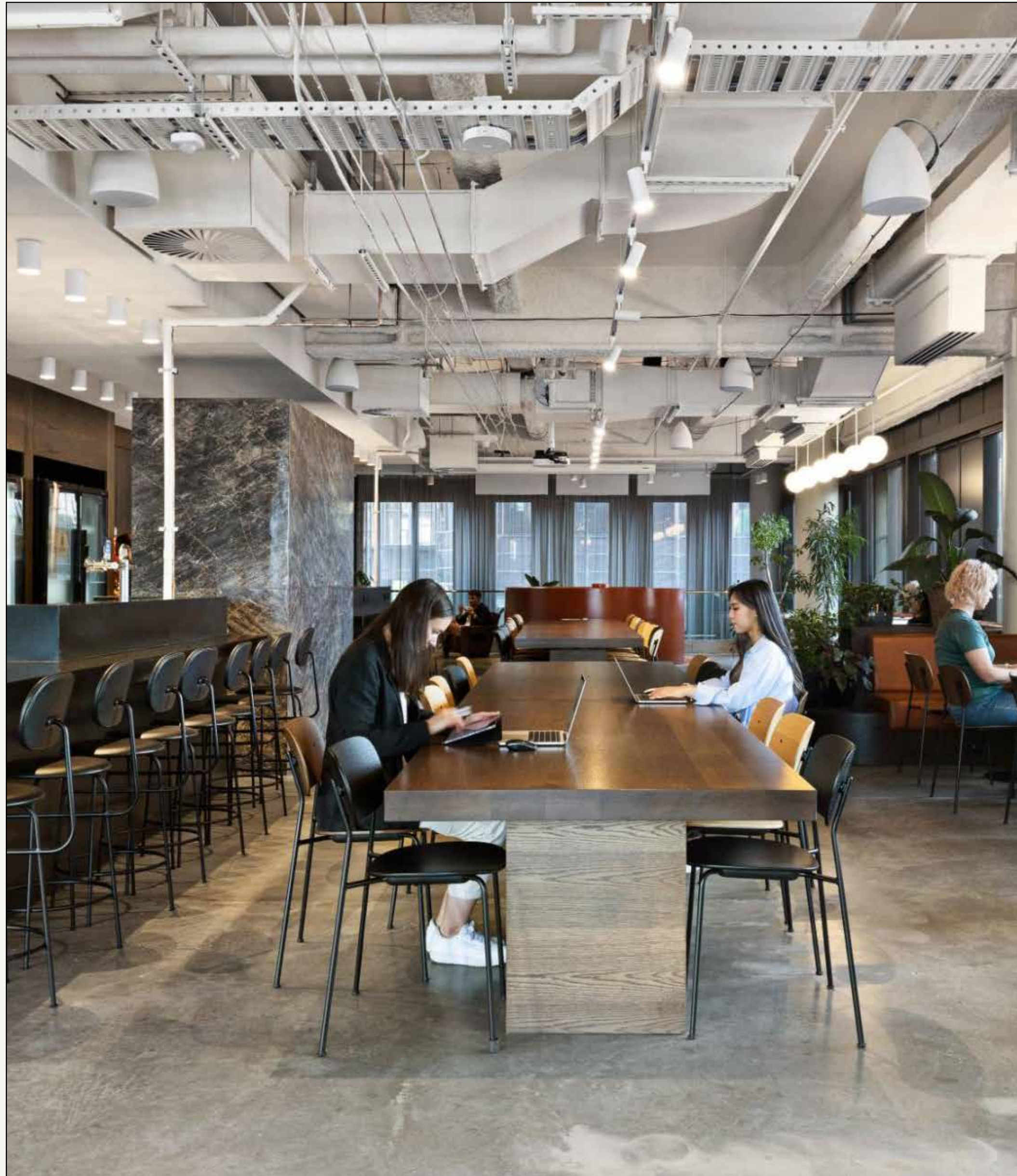




the commons



Our Location



# Kitchen & Dining Area

## Capacity

120 standing

80 seated

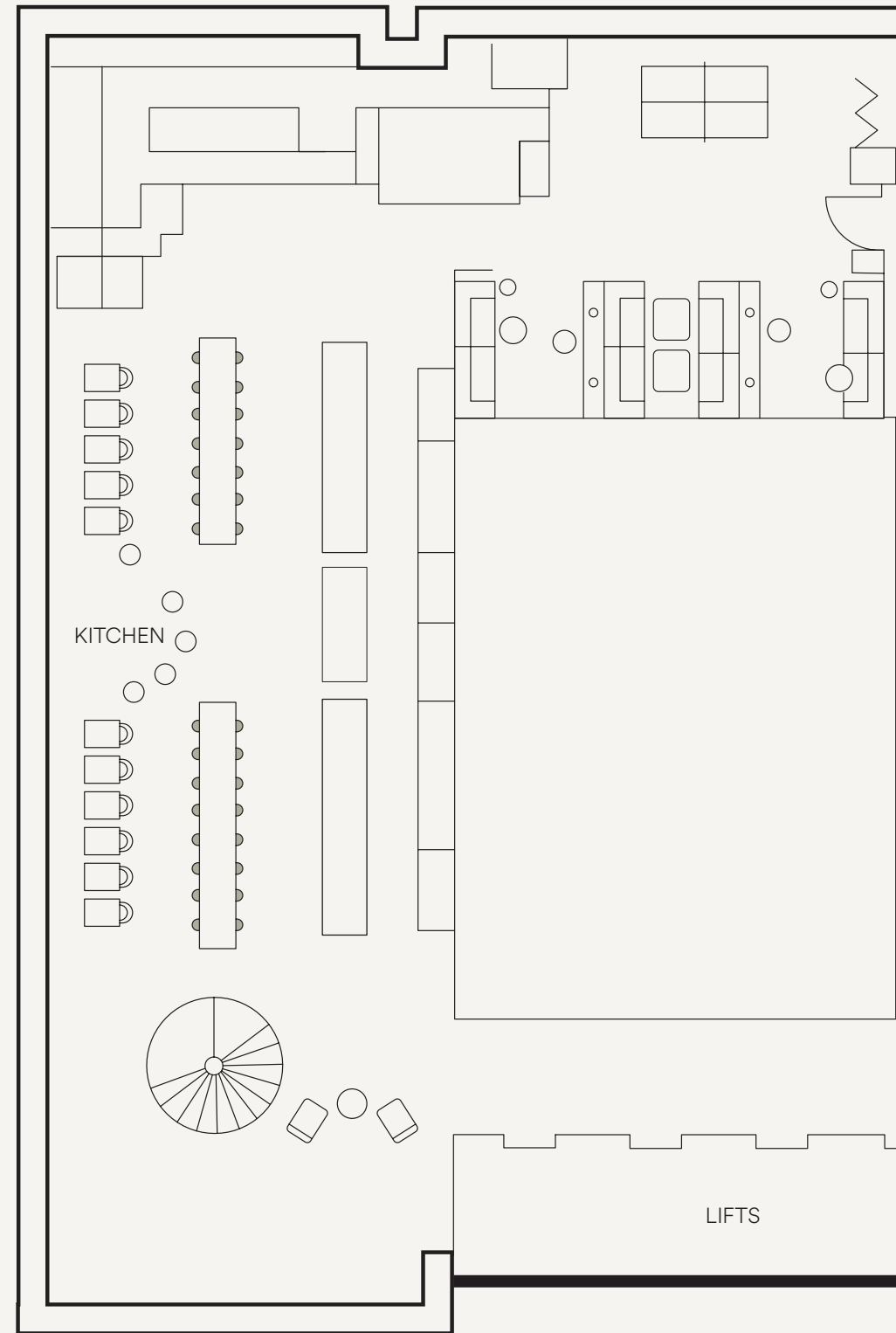
Dimensions: 300 sqm

## Features

- Unique design with natural light
- Multilevel Stage
- Projector and screen
- Indoor kitchen and dining area
- Sound system with up to four wireless and non-wireless microphones

# Floor Plan Options

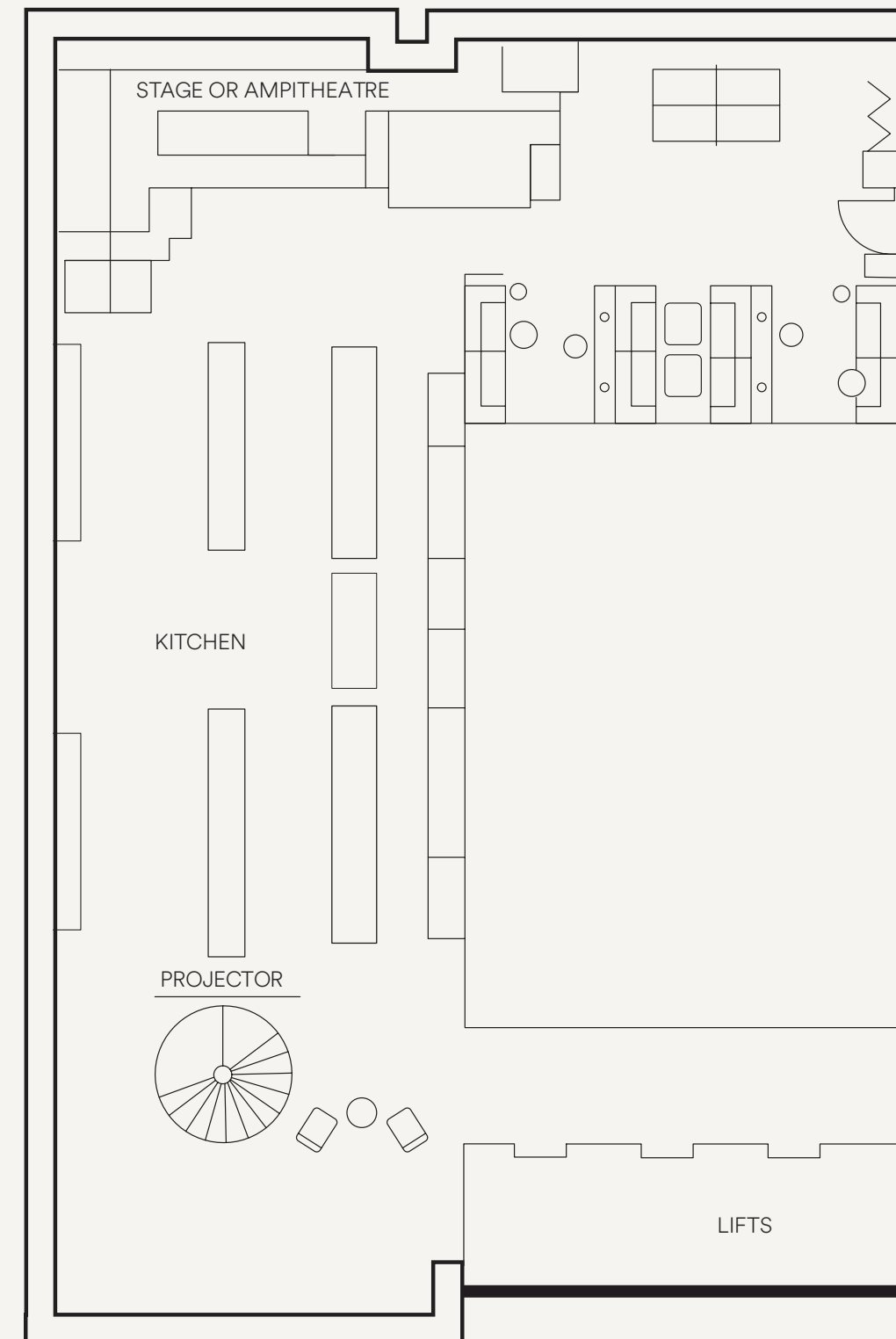
## Kitchen & Dining Area



Venue Default

Capacity

80 seated



Standing

Capacity

120 standing



# Movie Theatre

## Capacity

32 seated (1 wheelchair)

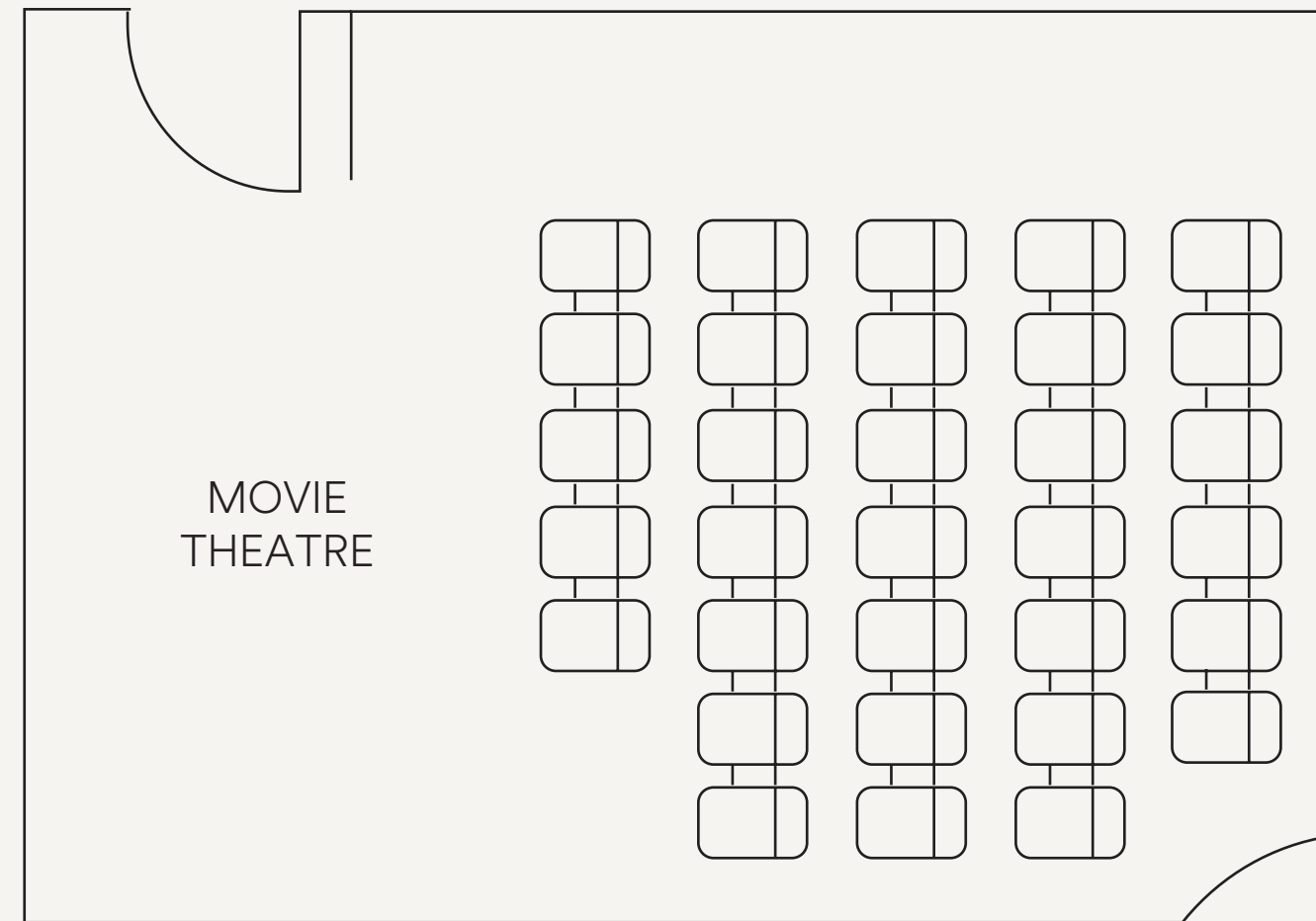
Dimensions: 40 sqm

## Features

- Projector and screen
- Popcorn machine
- Cinema seating
- Whiteboard and markers

# Floor Plan Options

## Movie Theatre

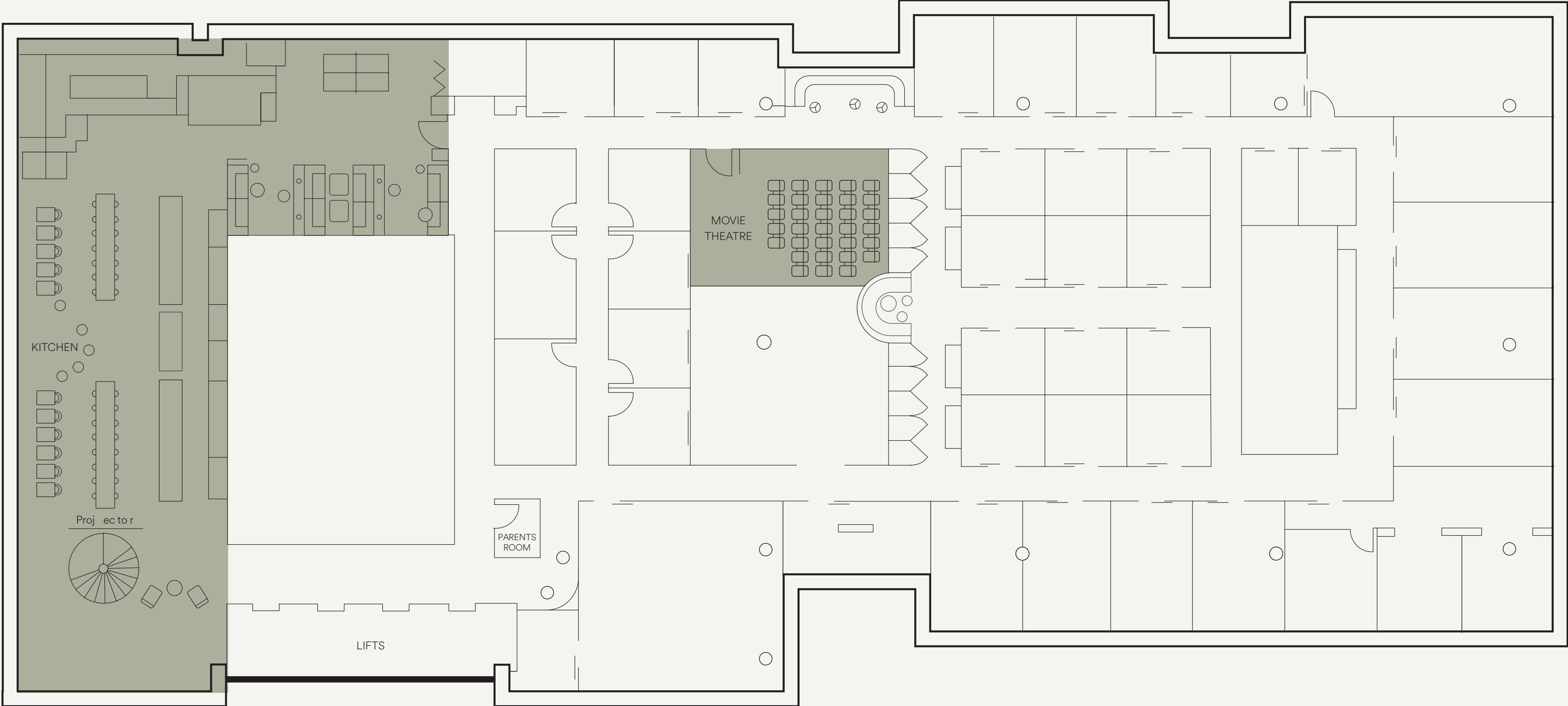


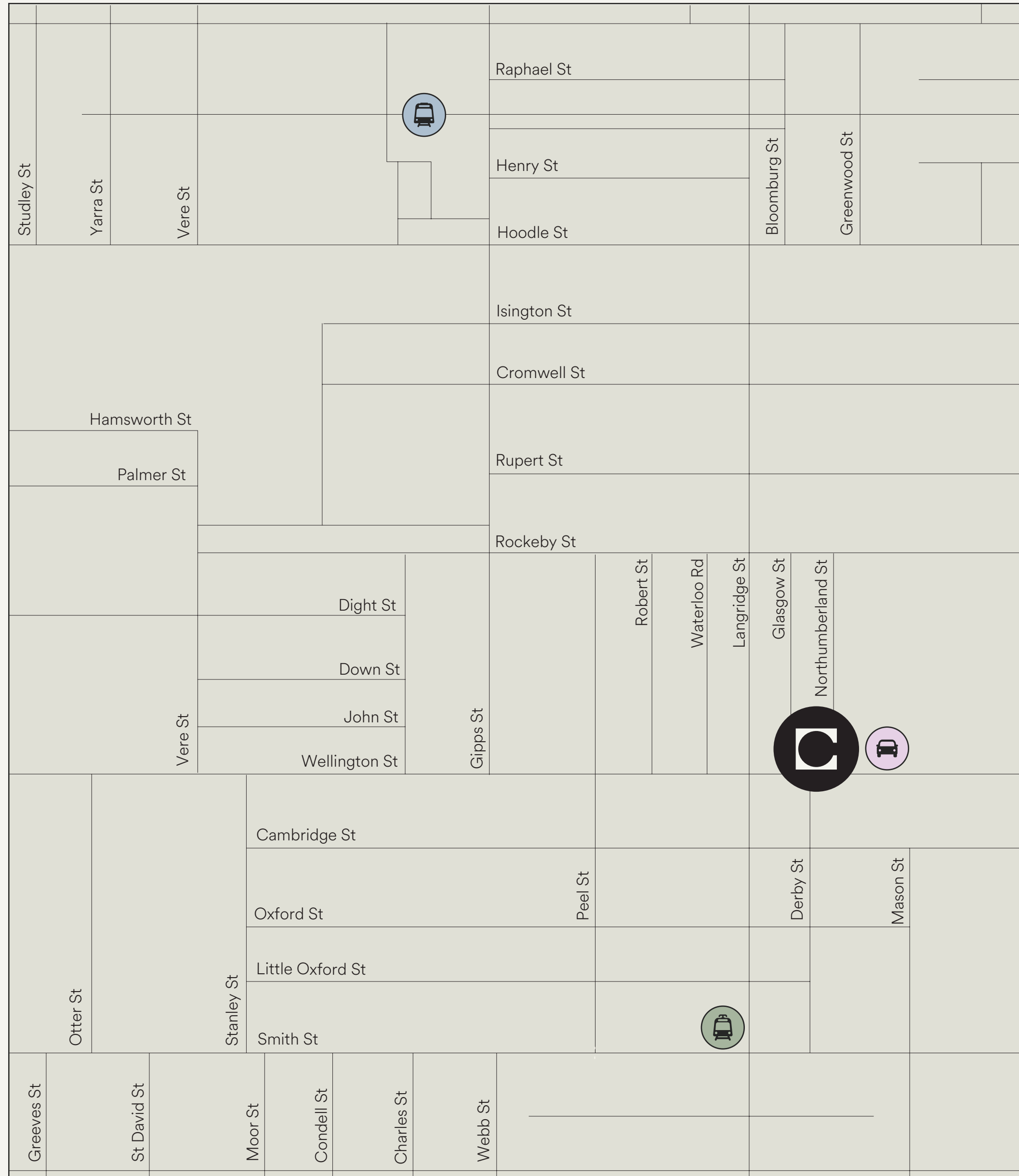
### Venue Default

#### Capacity

32 seated (1 wheelchair)

# Floor Plan Level 5







# Location

54 Wellington Street, Collingwood, VIC 3066


## Transport Options

 Paid Parking

- 1. Parked in  
42 Wellington Street  
\$15.00/day

 Train

- 1. Collingwood Station

 Light rail

- 1. Route 86, Stop 15, Smith St/ Gertrude St

# Get in Touch

1300 848 568

[events@thecommons.com.au](mailto:events@thecommons.com.au)

[www.thecommons.com.au](http://www.thecommons.com.au)

the commons