

the commons

# Event Space Hire at The Commons South Yarra.



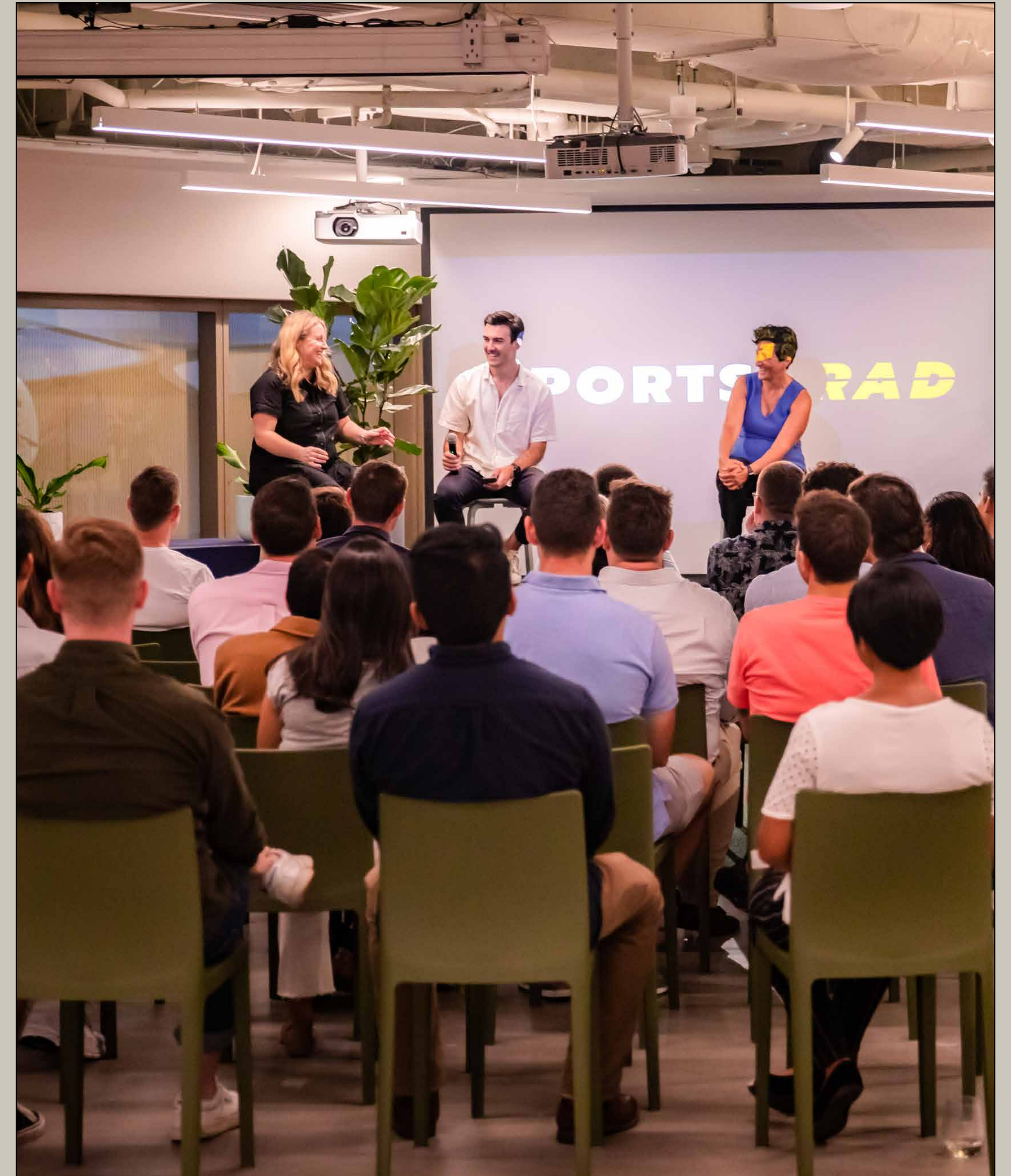
# The Commons is a creative shared workspace designed for you.

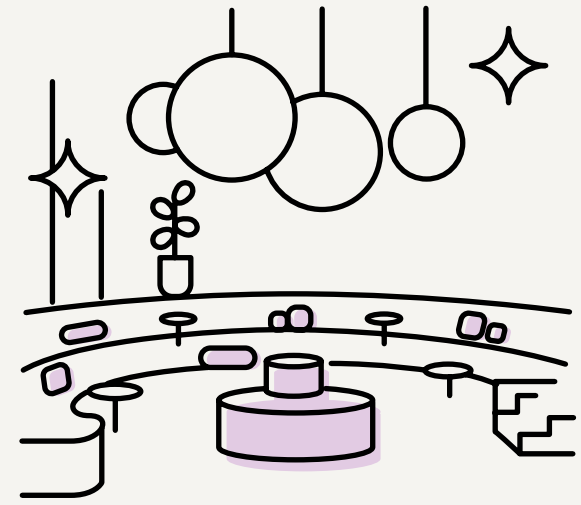
Our mission is to provide an environment that allows businesses to grow and individuals to flourish. Through continuous research and mindful consideration of every aspect within our spaces.

# Host your next event at one of our unique and beautifully designed locations.

We make providing high quality events easy, with a diverse range of spaces catered for your colleagues, clients or audience. With various social and dynamic space, we offer an environment that's perfect for hosting intimate talks and launches, as well as large scale performances, meetings and activations. With some of our spaces allowing up to 250 attendees and as little as 50 for intimate events, we have a space for your next event.

At The Commons, we're experienced when it comes to Events as we host a diverse range of events in-house each week. We offer top of the range facilities with the inclusion of sound systems, wireless handheld microphones, projectors and screens.





## Premium Venue

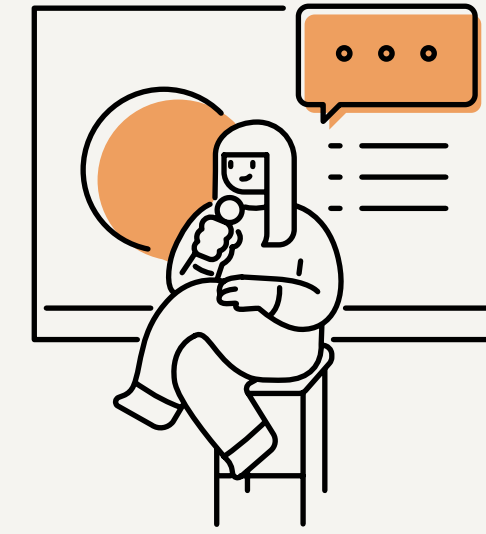
With over 10 locations to choose from, one of our unique venues is sure to please.

Each event space is a light-filled space that provides a stunning backdrop for any event.



## Dedicated Team

Our experienced team can help you execute a successful event.



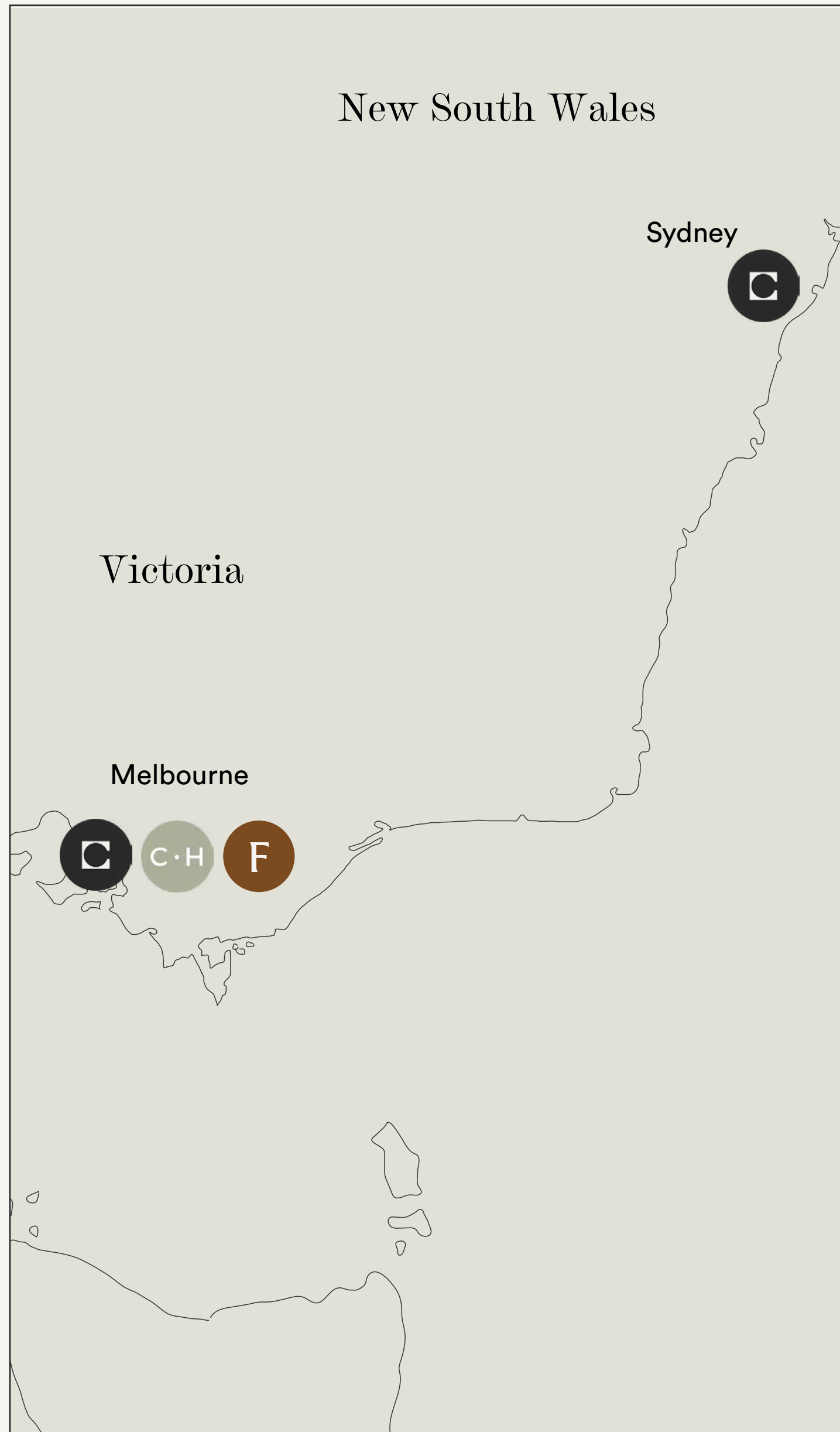
## Facilities

Our event spaces are designed to cater to various needs. Depending on the space, you will have access to projectors, screens, microphones, speakers, AV equipment, and more.



## Catering

Catering is available from nearby restaurants and cafes, or BYO food and beverages is available upon request. We also offer a drinks package for \$20 + GST per person, providing unlimited beer and seltzer for the duration of the event.



# The Commons Locations

## Melbourne

### Collingwood (Gipps Street)

36-38 Gipps Street, Collingwood, VIC 3066

### Collingwood (Wellington Street)

54 Wellington Street, Collingwood, VIC 3066

### Collins Street | Coming Soon

55 Collins Street, Melbourne, VIC 3000

### Cremorne

10-20 Gwynne Street, Cremorne, VIC 3121

### South Melbourne

80 Market Street, South Melbourne, VIC 3205

### South Yarra

11 Wilson Street, South Yarra, VIC 3141

### QV

3 Albert Coates Lane, Melbourne, VIC 3000

### Central House South Melbourne

101 Moray St, South Melbourne, VIC 3205

### Central House Toorak

489-505 Toorak Road, Toorak, VIC 3142

### Forum Cremorne

65 Dover Street, Cremorne, VIC 3121

## Sydney

### Chippendale

20-40 Meagher Street, Chippendale, NSW 2008

### George Street

388 George Street, Sydney, NSW 2000

### Martin Place | Coming Soon

39 Martin Place, Sydney, NSW 2000

### Surry Hills

285A Crown Street, Surry Hills, NSW 2010

### York Street

32 York Street, Sydney, NSW 2000

# The Commons

## South Yarra

11 Wilson Street, South Yarra, VIC 3141

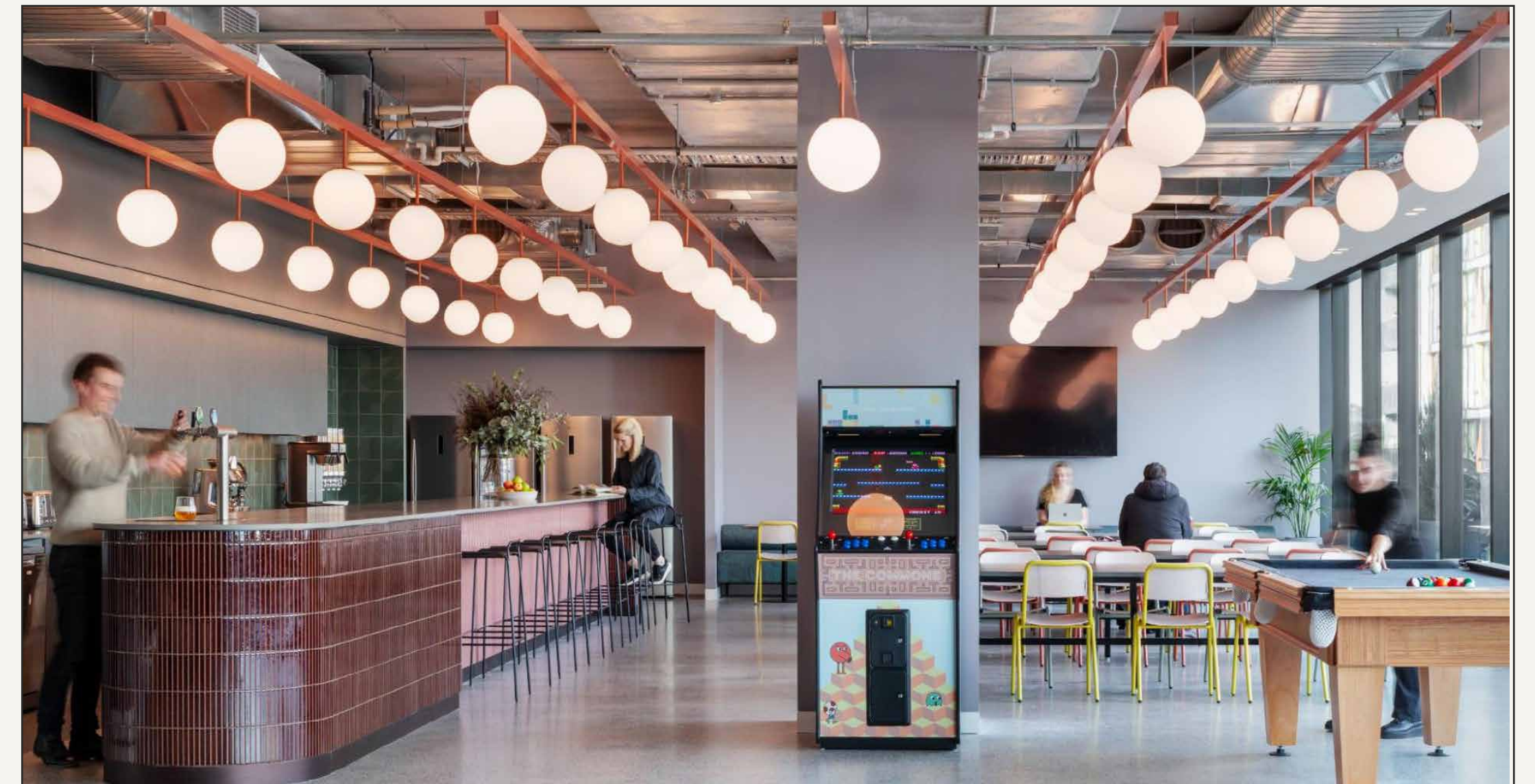
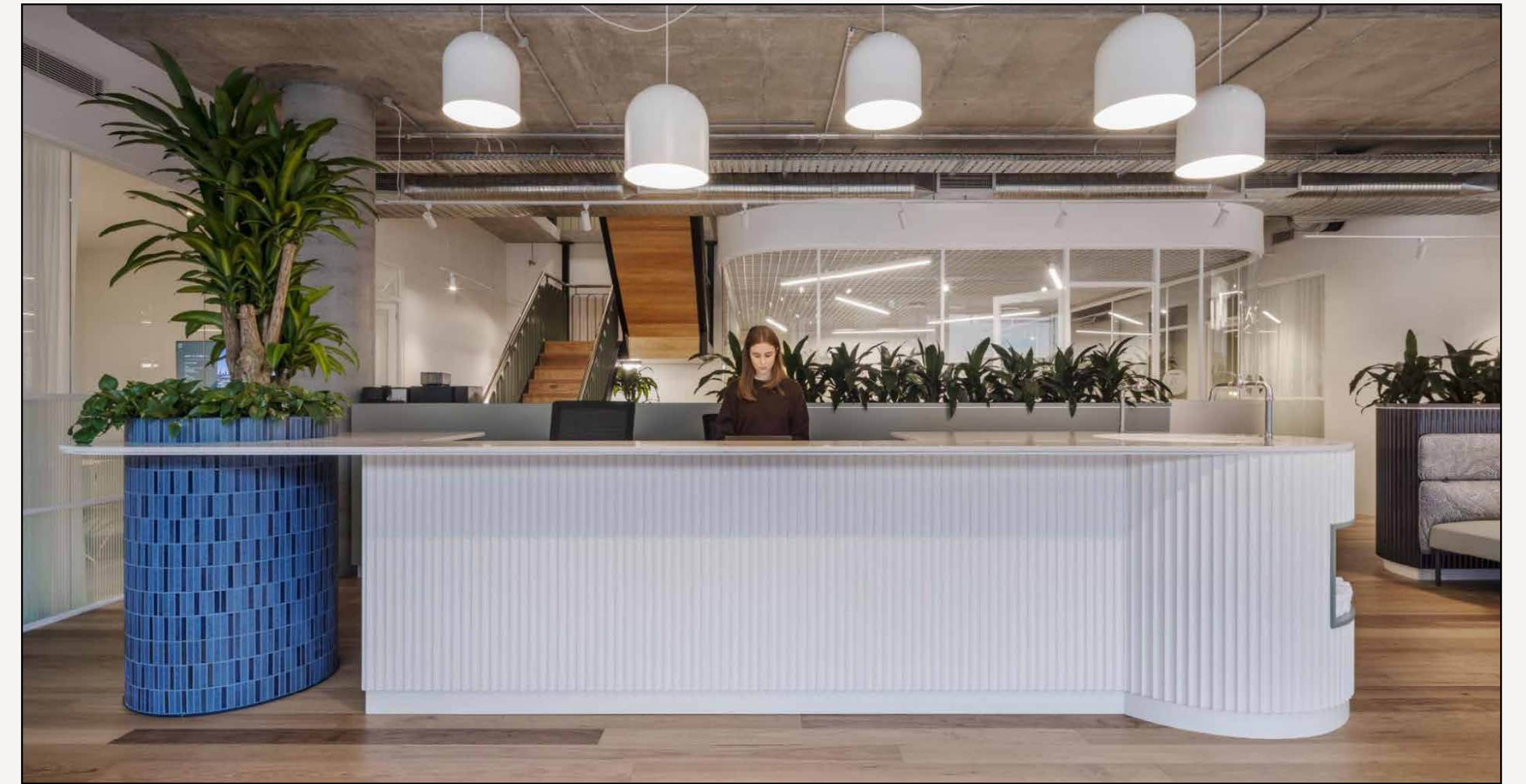
Coined Melbourne's fashion district, South Yarra is a vibrant cultural precinct home to local boutiques, art galleries and the renowned nightlife of Chapel Street. We're down the road from Prahran Market, next door to the Jam Factory, and only a 5-minute walk from South Yarra Station.

The Commons South Yarra is a unique space for any event. With a sunken lounge area and a record lounge, this location appeals to those looking for a one-of-a-kind experience.

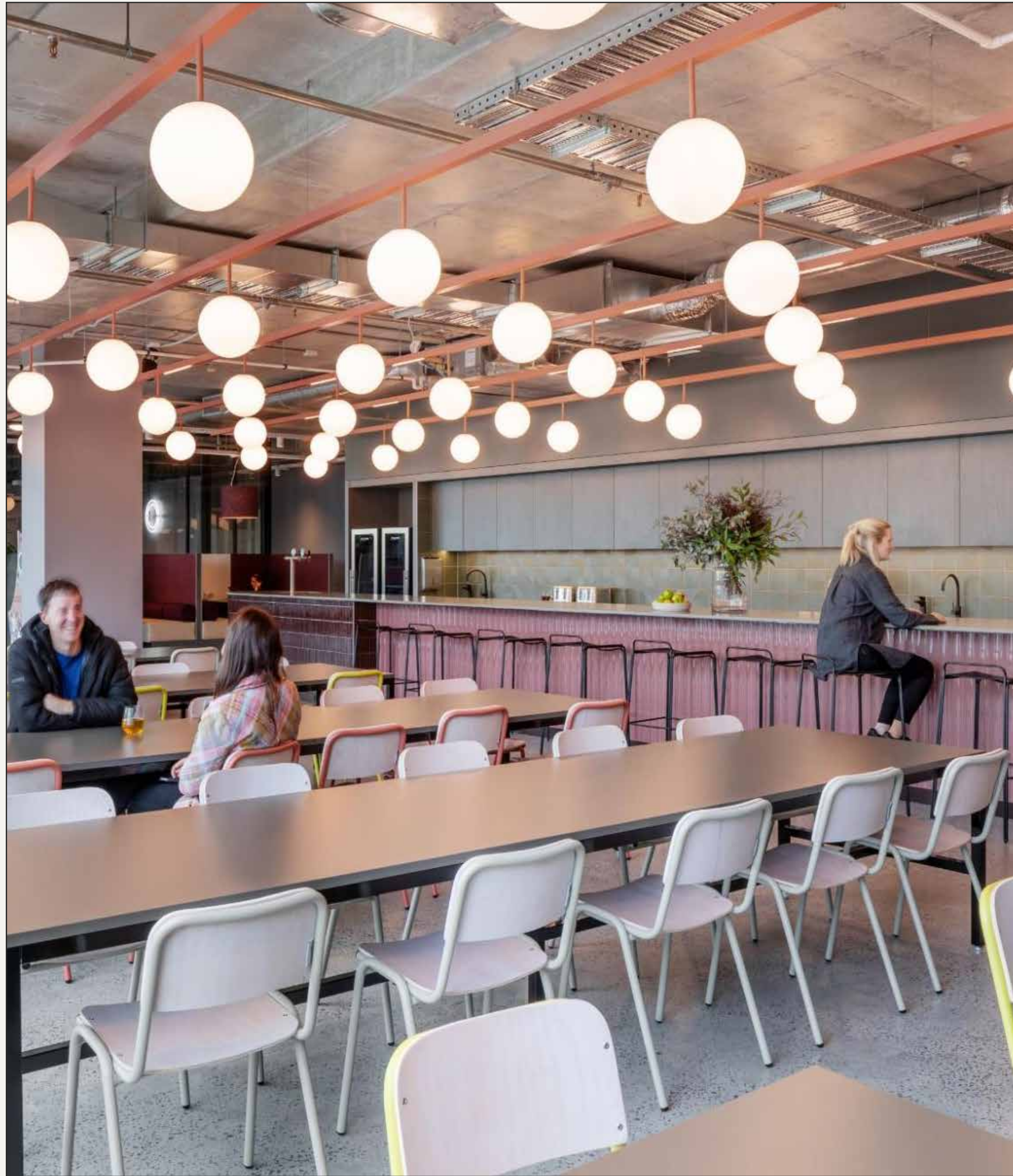




the commons



Our Location



# Kitchen & Dining Area

## Capacity

100 standing

50 seated

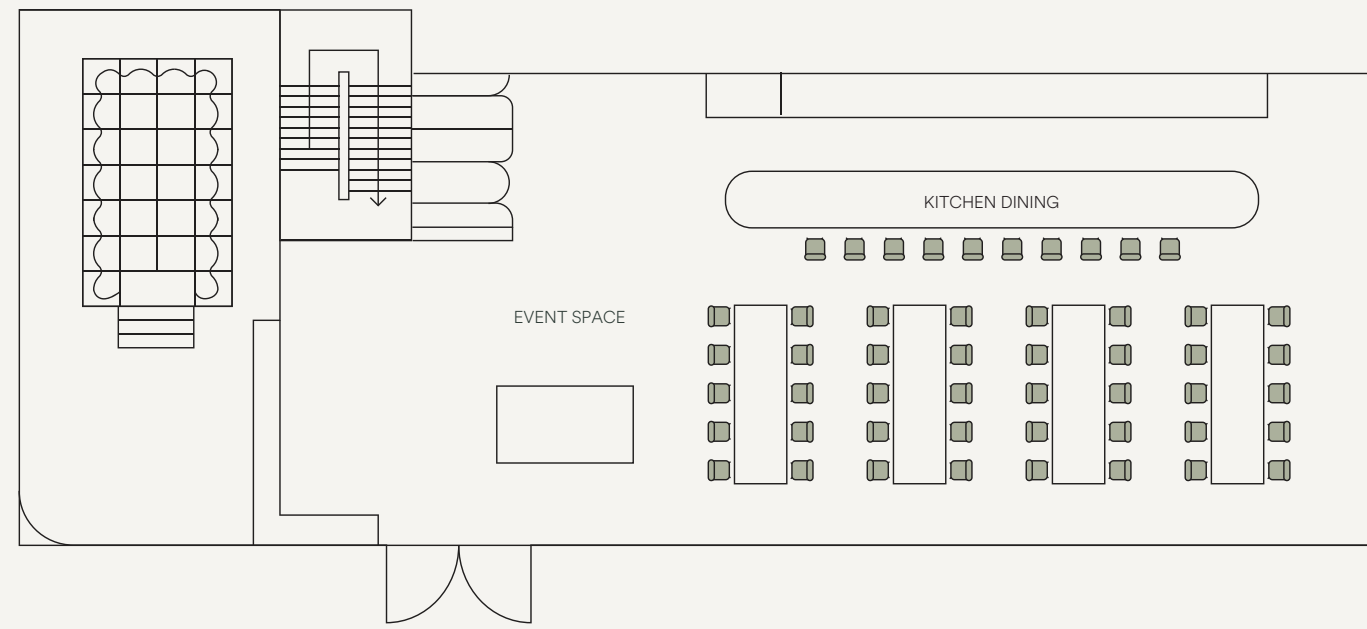
Dimensions: 150 sqm

## Features

- Indoor kitchen and dining area
- Presentation and cocktail styles available
- Pool table and arcade machine
- Unique design with natural light
- Sound system with two wireless handheld microphones

# Floor Plan Options

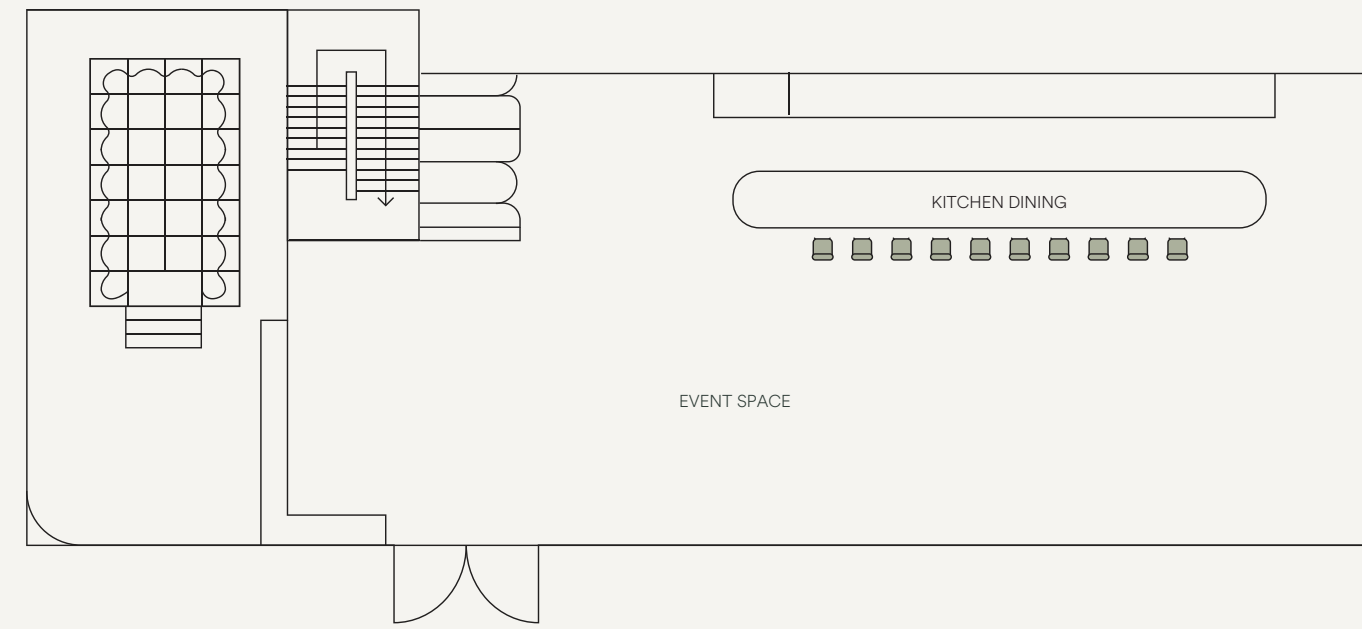
## Kitchen & Dining Area



### Venue Default

**Capacity**

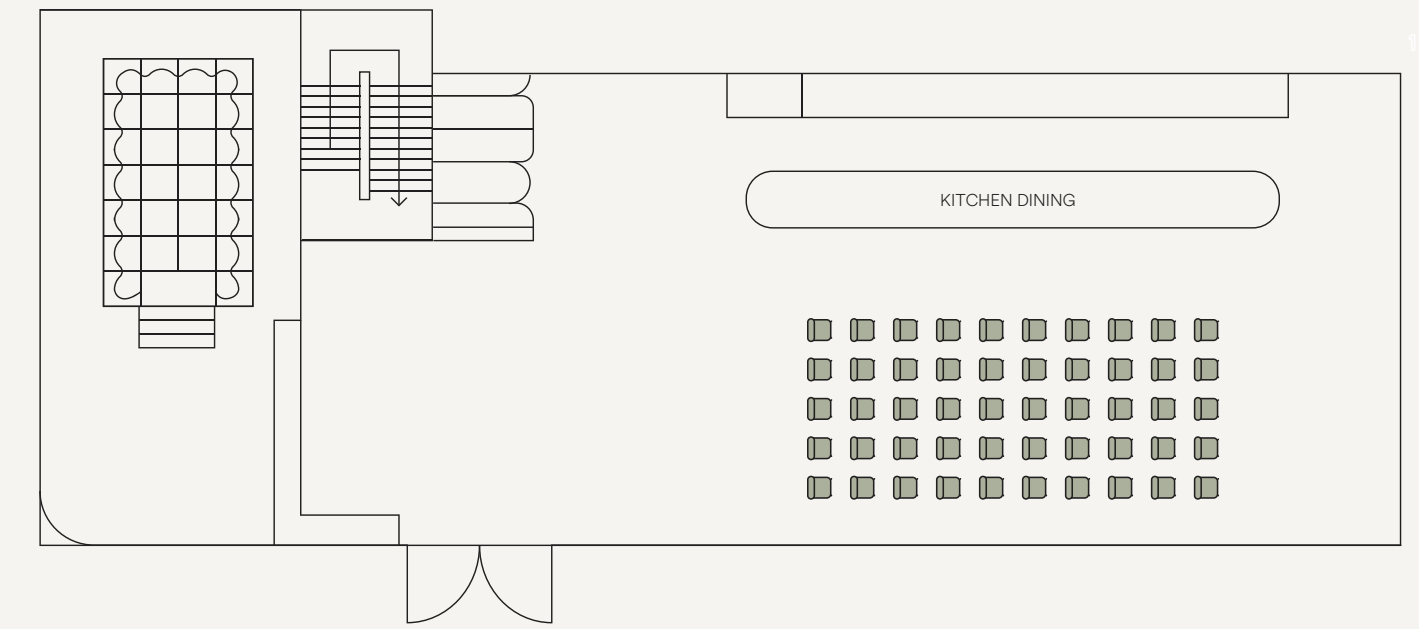
50 seated



### Standing

**Capacity**

100 standing



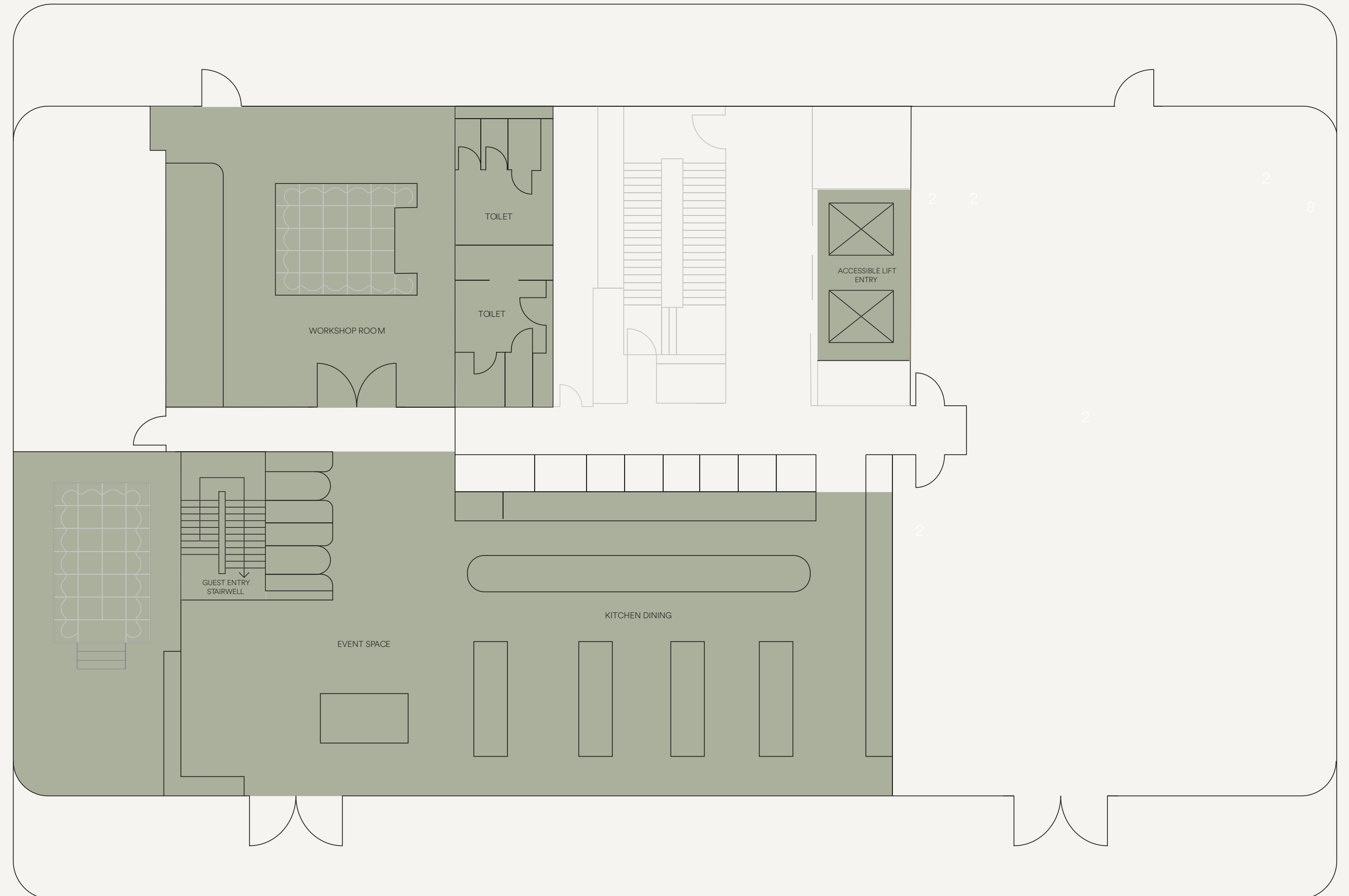
### Presentation

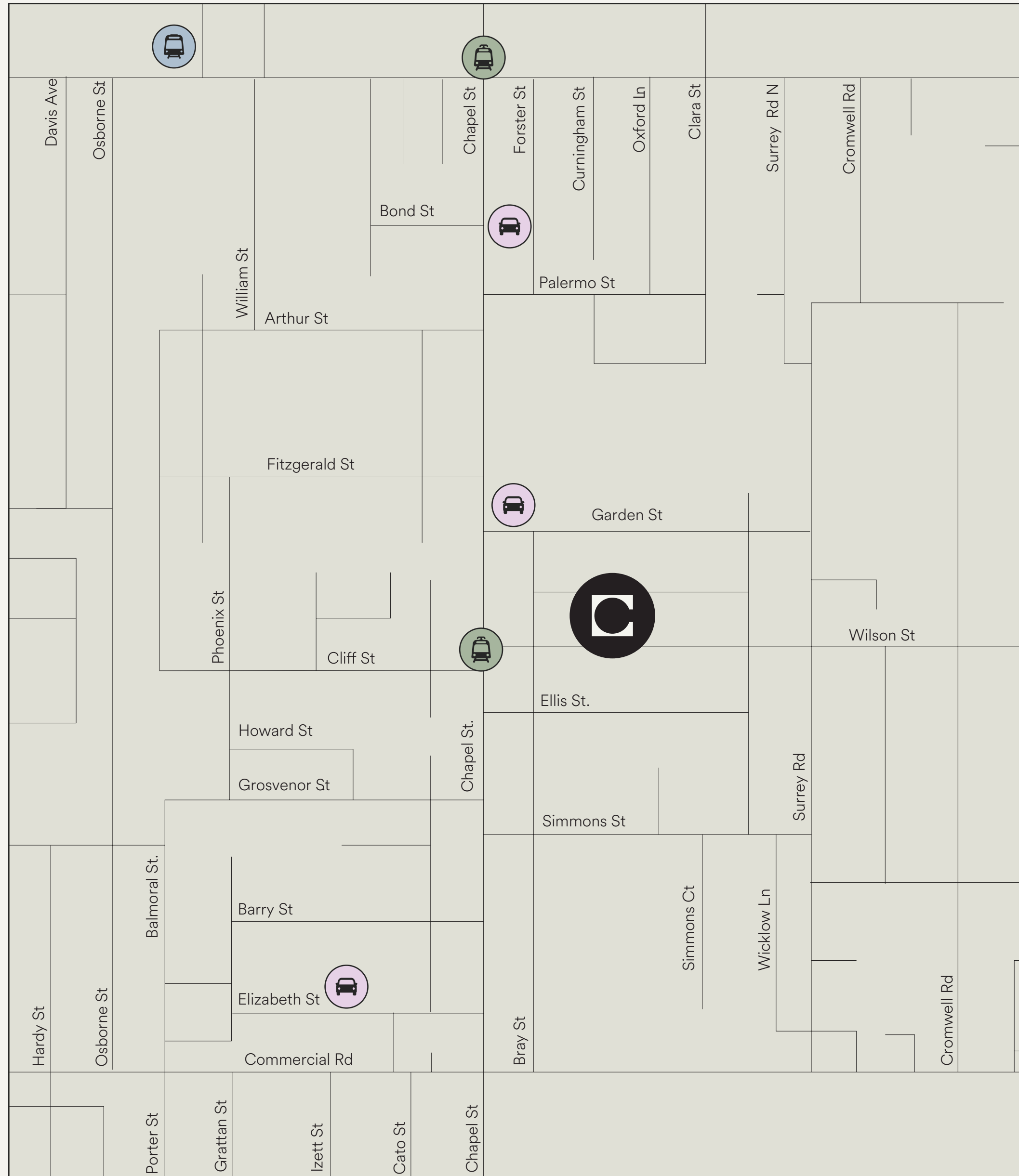
**Capacity**

50 seated

# Floor Plan Level 3

## Kitchen & Dining Area





# Location

11 Wilson Street, South Yarra, VIC 3141

## Transport Options



### Paid Parking

#### 1. Jam Factory

62-68 Garden St

\$3.00/hr

\$7.00/day (book online)

Early Bird (10am): \$9.00

#### 2. Care Parking

9 Elizabeth Street

\$3.20/hr

\$14.80/day

Early Bird: \$10.60

### 3. Care Parking Colonnade

538 Chapel Street

\$4.50/hr

\$9.50/hr



### Train

1. South Yarra Station



### Light rail

1. Route 78, Stop 48, Wilson St & Chapel St,  
Cliff & Chapel St

### Alternative option: Parkhound app

Find parking spaces from local residents & businesses with the Parkhound app.

# Get in Touch

1300 848 568

[events@thecommons.com.au](mailto:events@thecommons.com.au)

[www.thecommons.com.au](http://www.thecommons.com.au)

the commons