

the commons

# Event Space Hire at The Commons Cremorne.



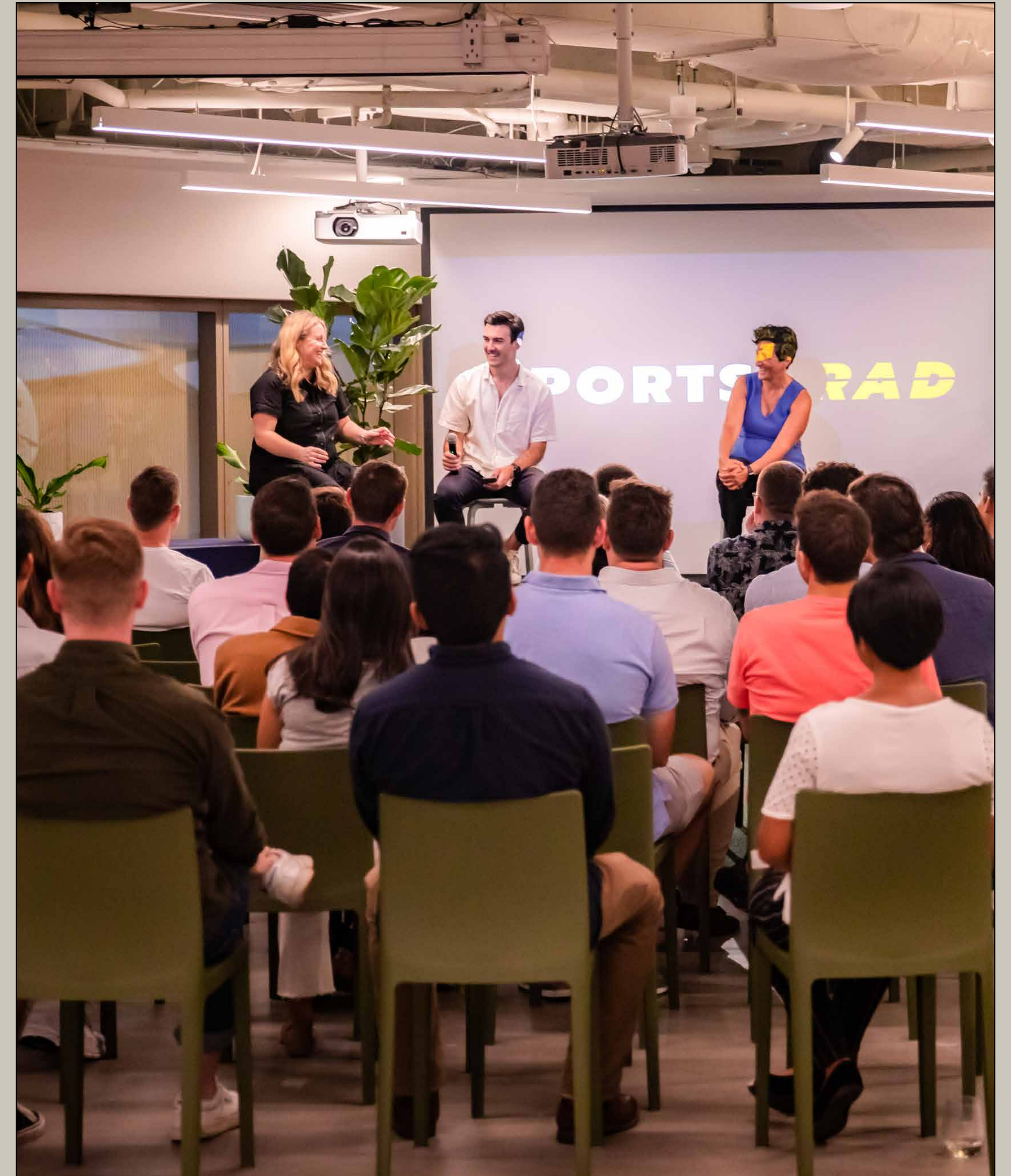
# The Commons is a creative shared workspace designed for you.

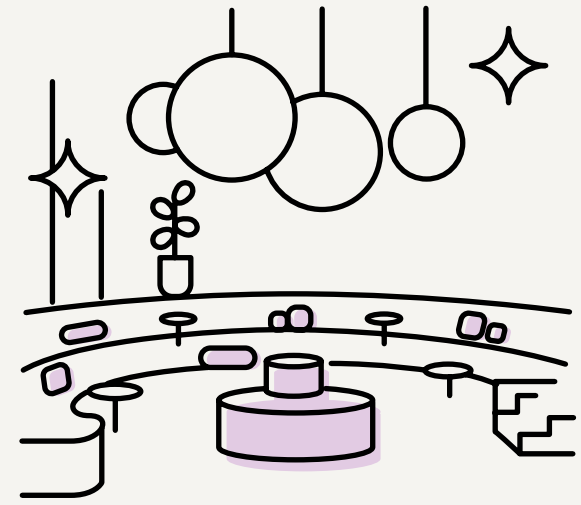
Our mission is to provide an environment that allows businesses to grow and individuals to flourish. Through continuous research and mindful consideration of every aspect within our spaces.

# Host your next event at one of our unique and beautifully designed locations.

We make providing high quality events easy, with a diverse range of spaces catered for your colleagues, clients or audience. With various social and dynamic space, we offer an environment that's perfect for hosting intimate talks and launches, as well as large scale performances, meetings and activations. With some of our spaces allowing up to 250 attendees and as little as 50 for intimate events, we have a space for your next event.

At The Commons, we're experienced when it comes to Events as we host a diverse range of events in-house each week. We offer top of the range facilities with the inclusion of sound systems, wireless handheld microphones, projectors and screens.





## Premium Venue

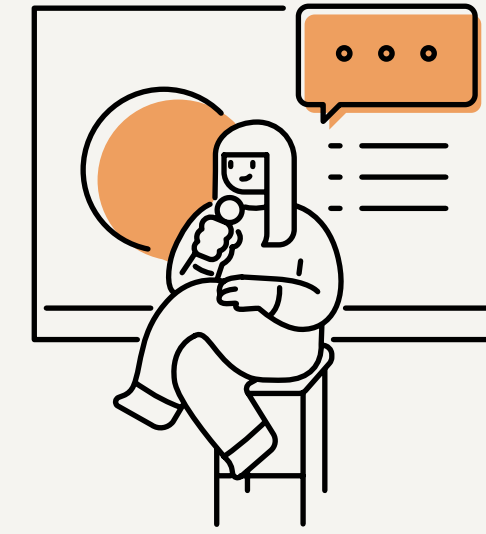
With over 10 locations to choose from, one of our unique venues is sure to please.

Each event space is a light-filled space that provides a stunning backdrop for any event.



## Dedicated Team

Our experienced team can help you execute a successful event.



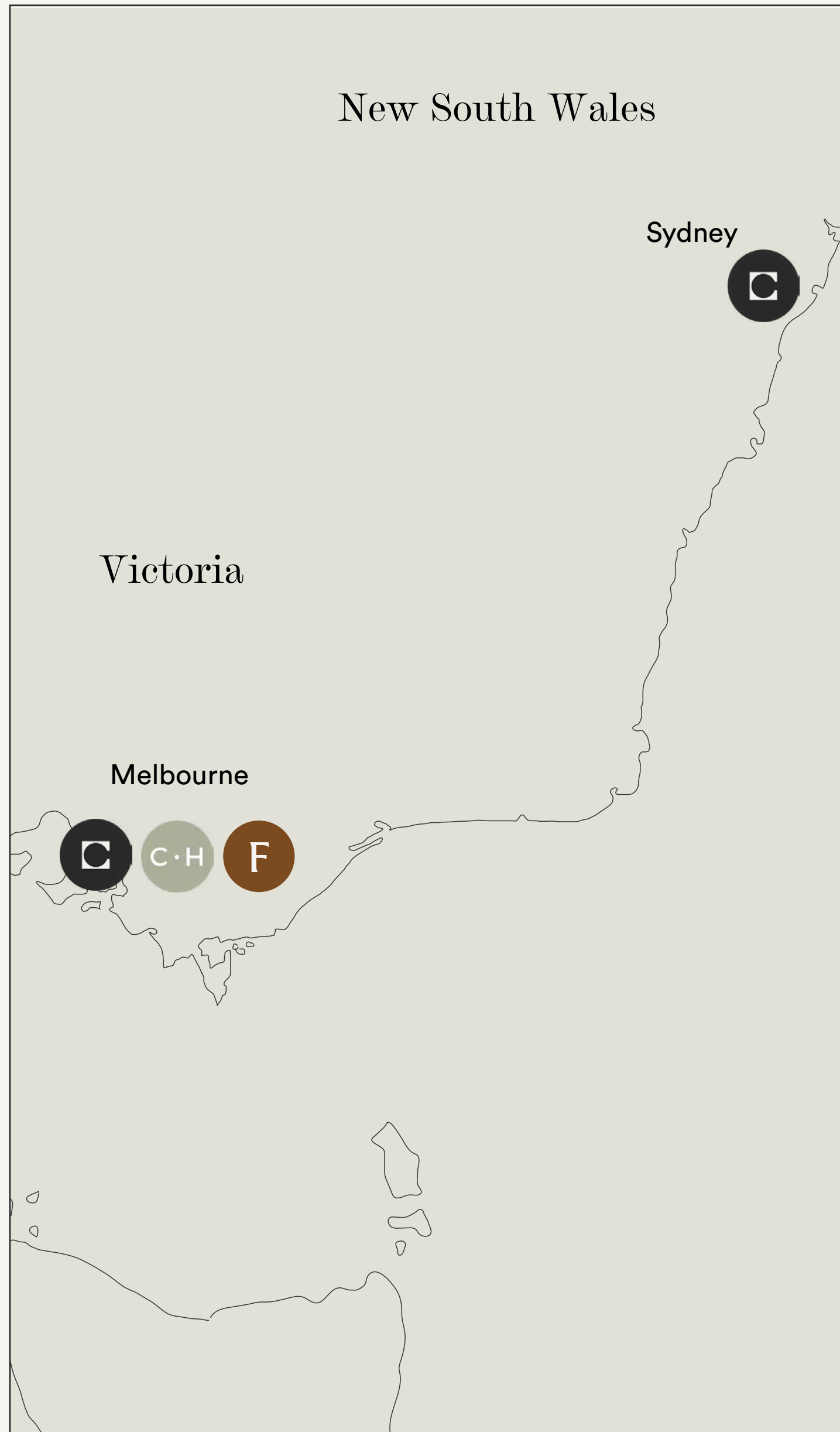
## Facilities

Our event spaces are designed to cater to various needs. Depending on the space, you will have access to projectors, screens, microphones, speakers, AV equipment, and more.



## Catering

Catering is available from nearby restaurants and cafes, or BYO food and beverages is available upon request. We also offer a drinks package for \$20 + GST per person, providing unlimited beer and seltzer for the duration of the event.



# The Commons Locations

## Melbourne

### Collingwood (Gipps Street)

36-38 Gipps Street, Collingwood, VIC 3066

### Collingwood (Wellington Street)

54 Wellington Street, Collingwood, VIC 3066

### Collins Street | Coming Soon

55 Collins Street, Melbourne, VIC 3000

### Cremorne

10-20 Gwynne Street, Cremorne, VIC 3121

### South Melbourne

80 Market Street, South Melbourne, VIC 3205

### South Yarra

11 Wilson Street, South Yarra, VIC 3141

### QV

3 Albert Coates Lane, Melbourne, VIC 3000

### Central House South Melbourne

101 Moray St, South Melbourne, VIC 3205

### Central House Toorak

489-505 Toorak Road, Toorak, VIC 3142

### Forum Cremorne

65 Dover Street, Cremorne, VIC 3121

## Sydney

### Chippendale

20-40 Meagher Street, Chippendale, NSW 2008

### George Street

388 George Street, Sydney, NSW 2000

### Martin Place | Coming Soon

39 Martin Place, Sydney, NSW 2000

### Surry Hills

285A Crown Street, Surry Hills, NSW 2010

### York Street

32 York Street, Sydney, NSW 2000

# The Commons Cremorne

10-20 Gwynne Street, Cremorne VIC 3121

Cremorne is packed with hidden cafes, beautiful cottages harking back to the Victorian era and contrasted by modern townhouses. Situated on the cusp of the Yarra River, Cremorne is arguably one of Melbourne's most exciting suburbs.

The Commons Cremorne is the largest of all the Melbourne locations featuring recreational activities such as a pool table, arcade games, darts and a ping pong table. With a sophisticated sound system and amphitheatre, this location is ideal for any events.





the commons



Our Location



# Kitchen and Dining Area

## Capacity

150 standing

100 seated

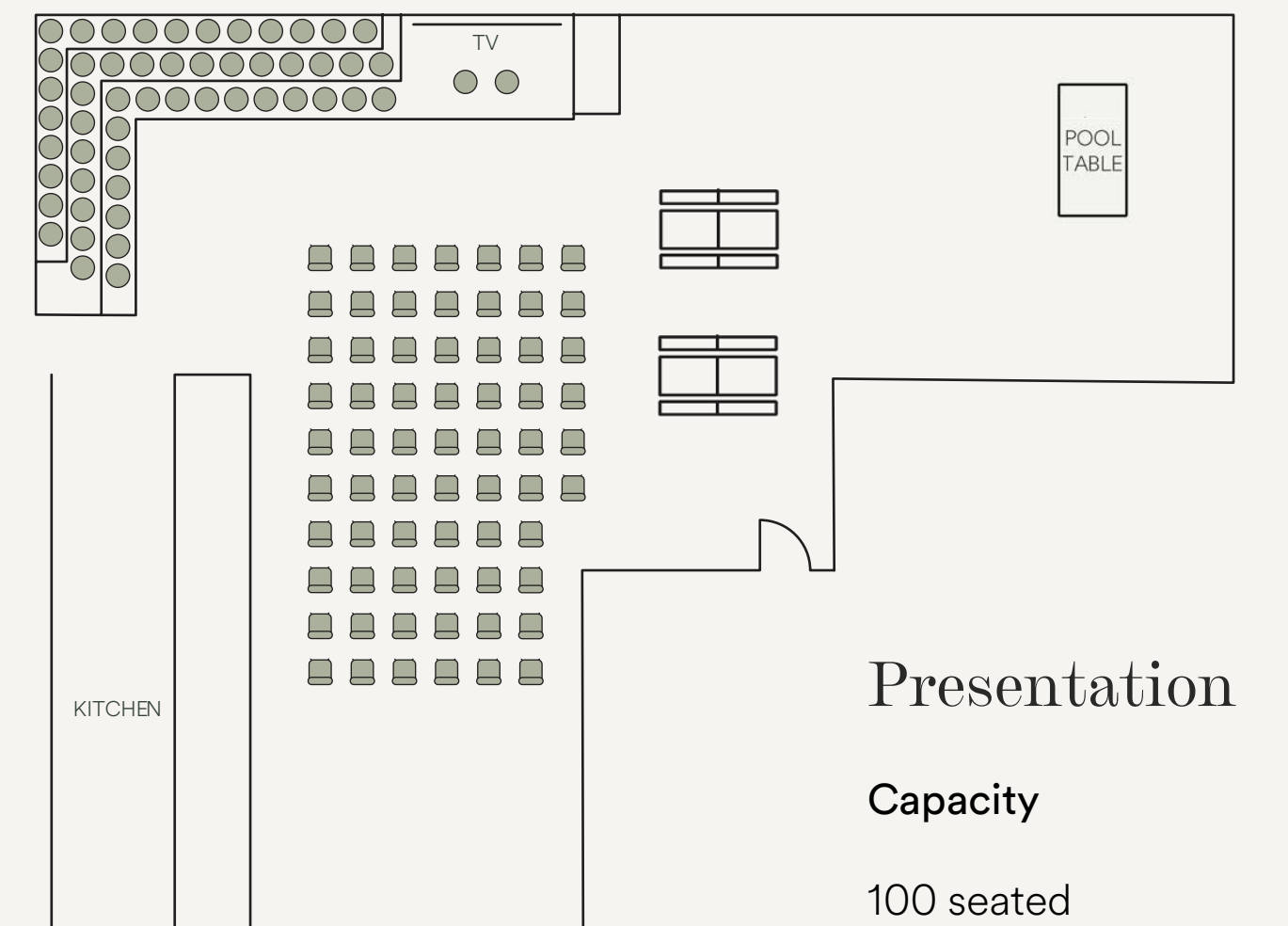
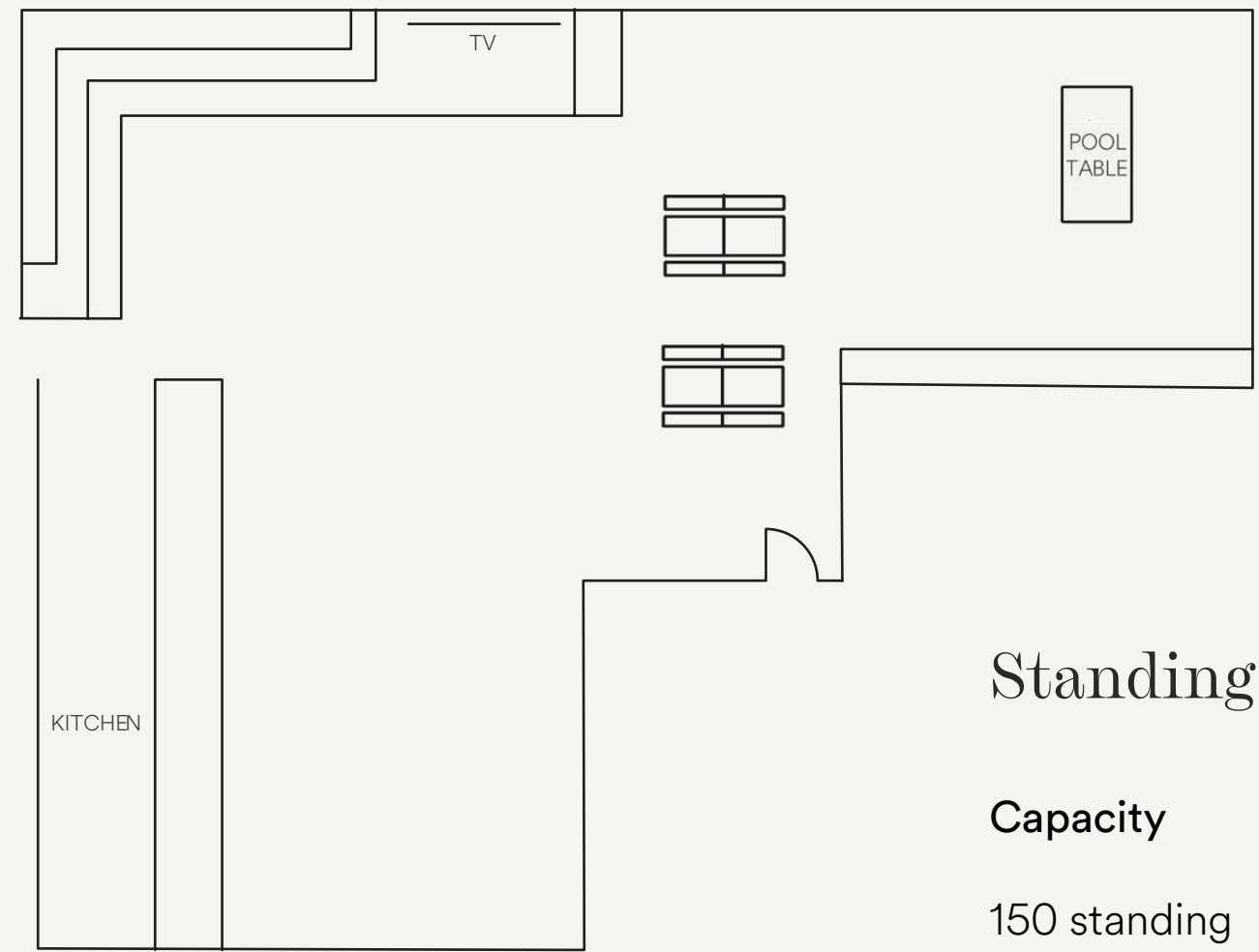
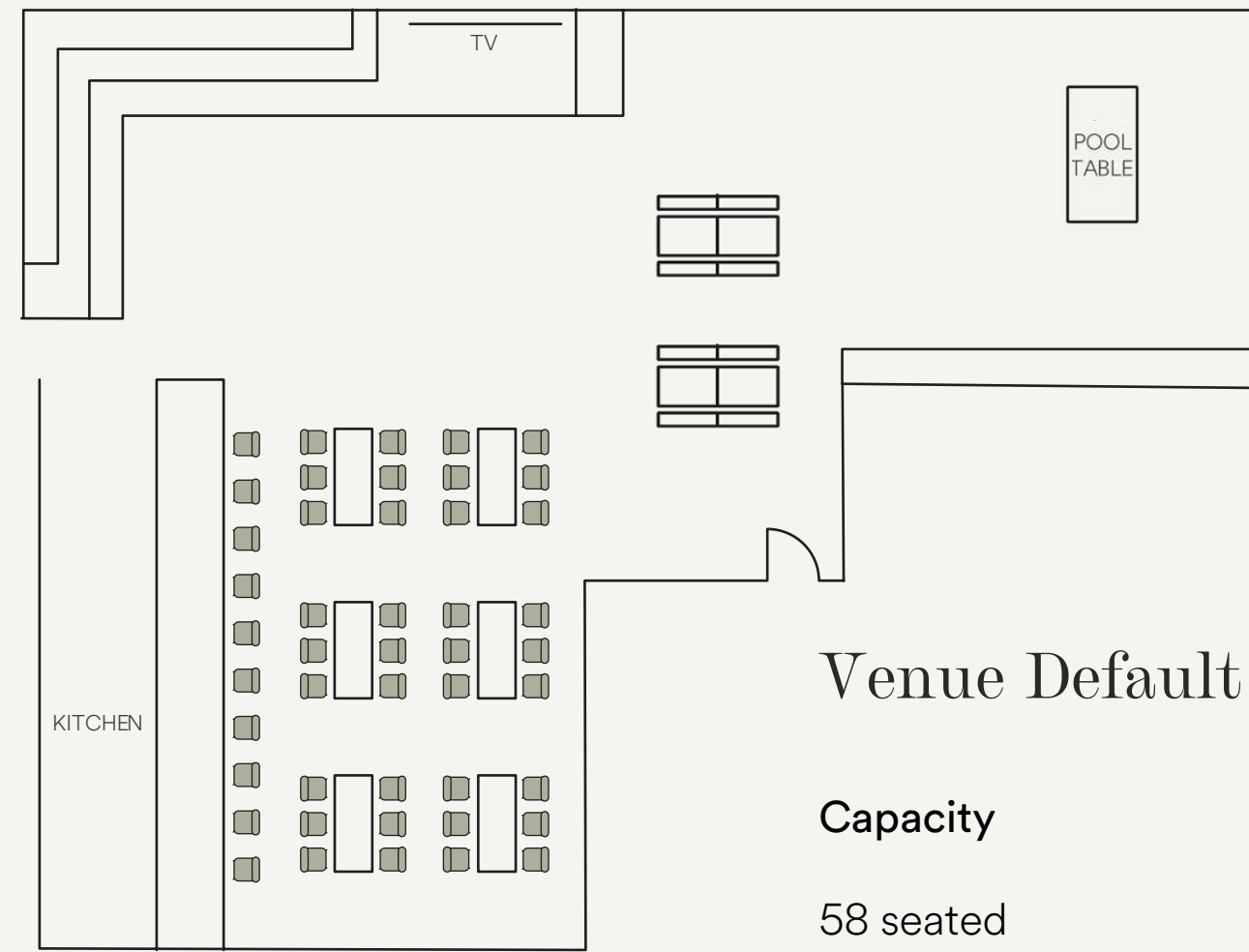
Dimensions: 300 sqm

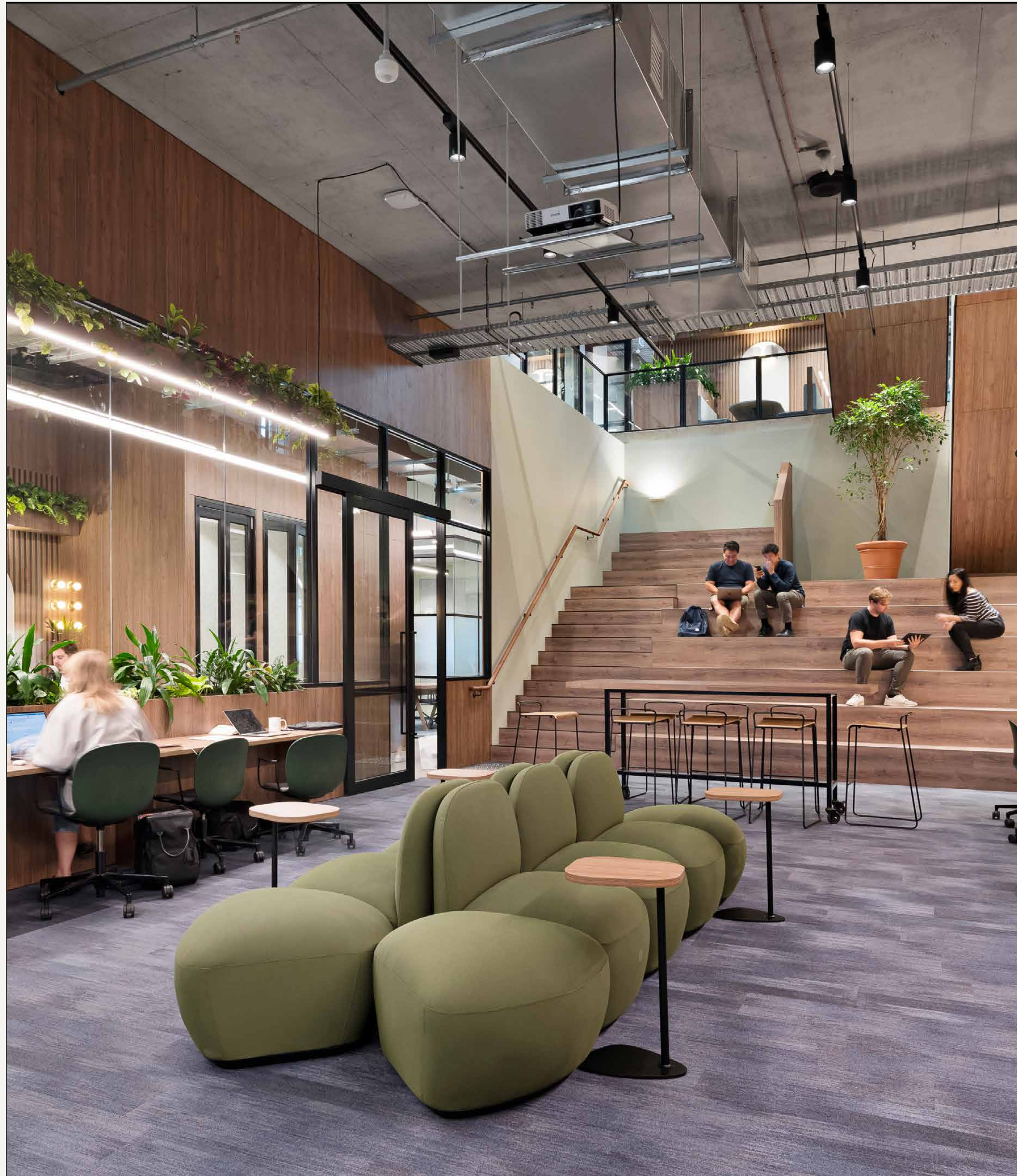
## Features

- Amphitheatre styled seating
- Cocktail and presentation style available
- Sound system with two wireless handheld microphones
- Indoor kitchen and dining area
- TV screen with a connection through HDMI and Airtame

# Floor Plan Options

## Kitchen and Dining Area





# Amphitheatre

## Capacity

100 standing

80 seated

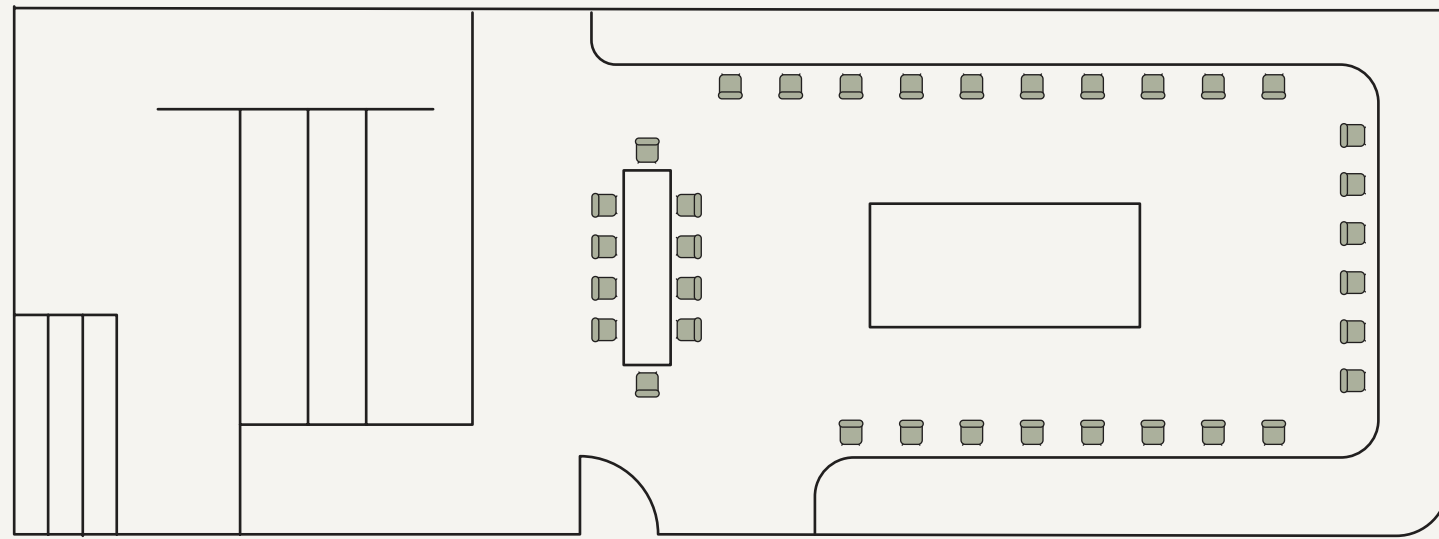
Dimensions: 80 sqm

## Features

- Amphitheatre
- Cocktail and presentation style available
- Projector and screen
- Sound system with two wireless handheld microphones

# Floor Plan Options

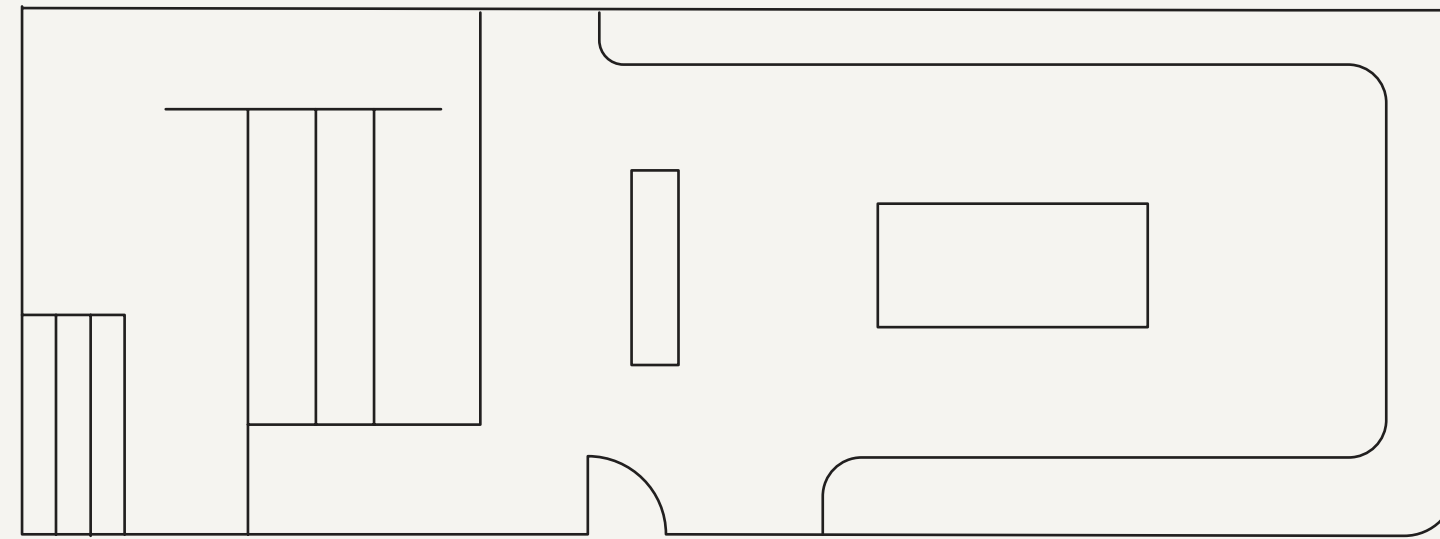
## Amphitheatre



Venue Default

**Capacity**

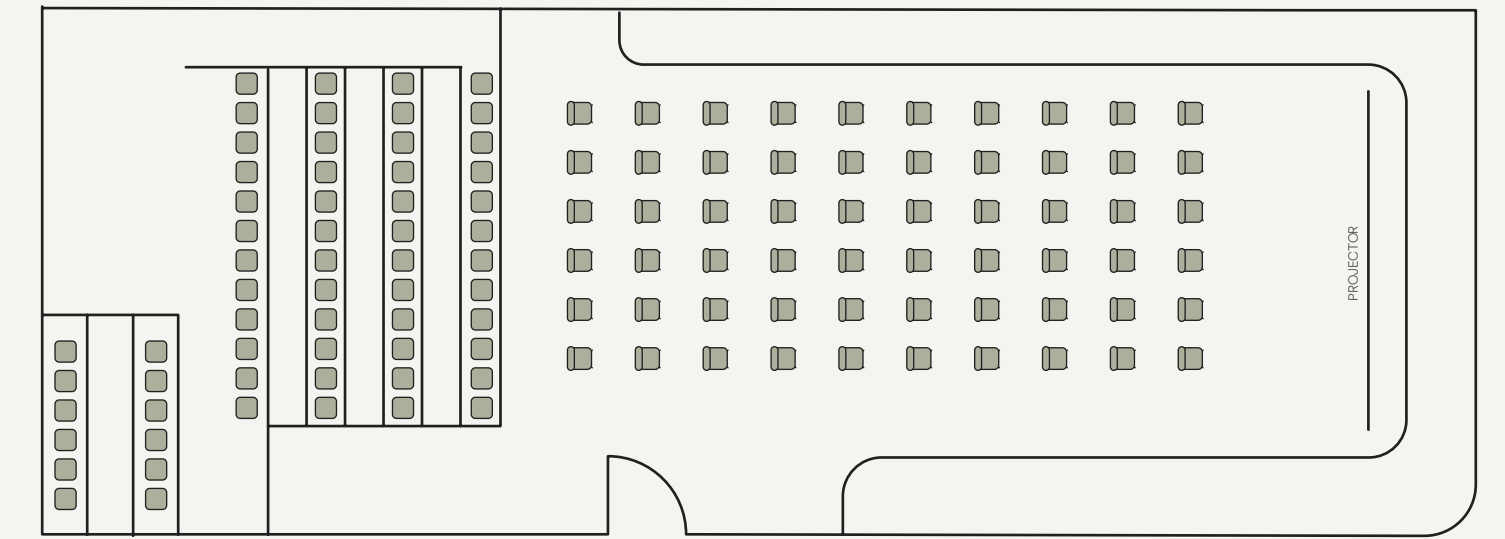
30 seated



Standing

**Capacity**

100 standing



Presentation

**Capacity**

80 seated



# Rooftop

## Capacity

100 standing

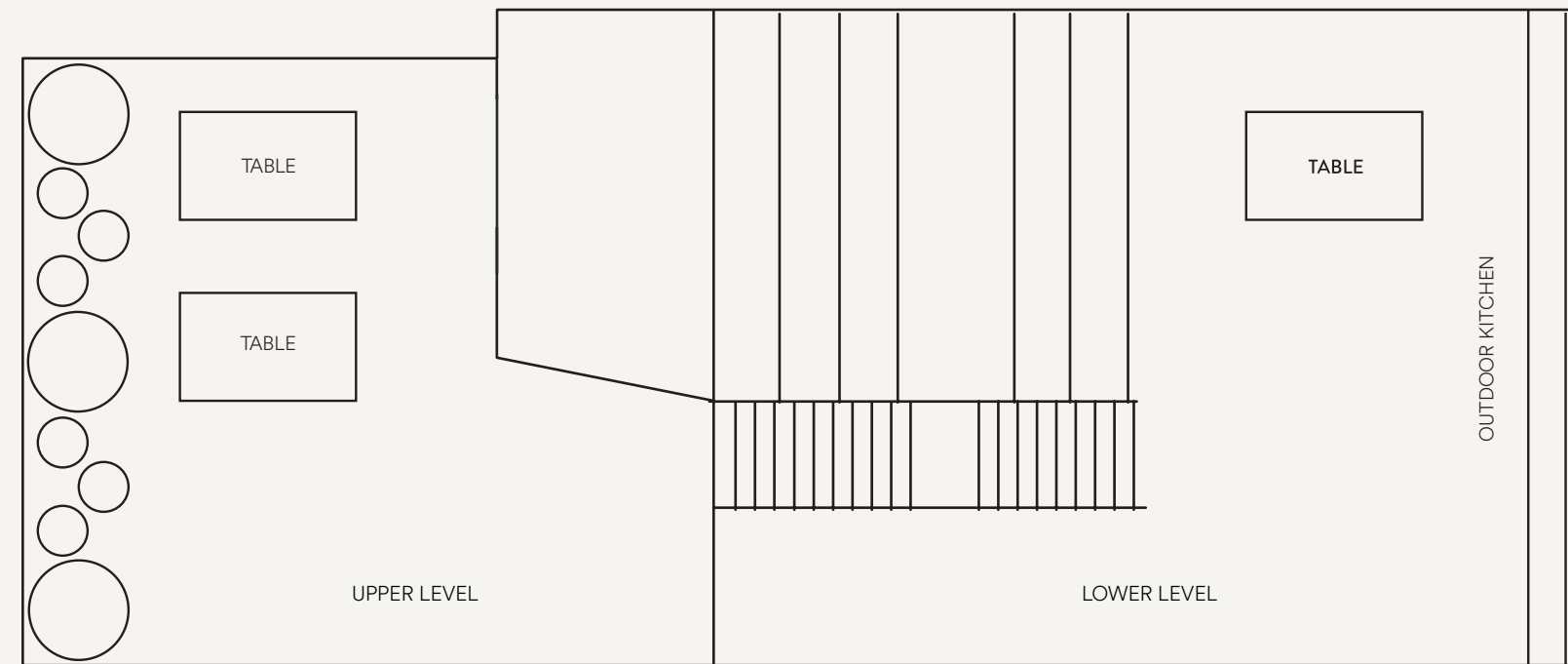
Dimensions: 100 sqm

## Features

- City views
- Sound system with two wireless microphones
- Outdoor kitchen area with BBQ
- Standing style available

# Floor Plan Options

Rooftop

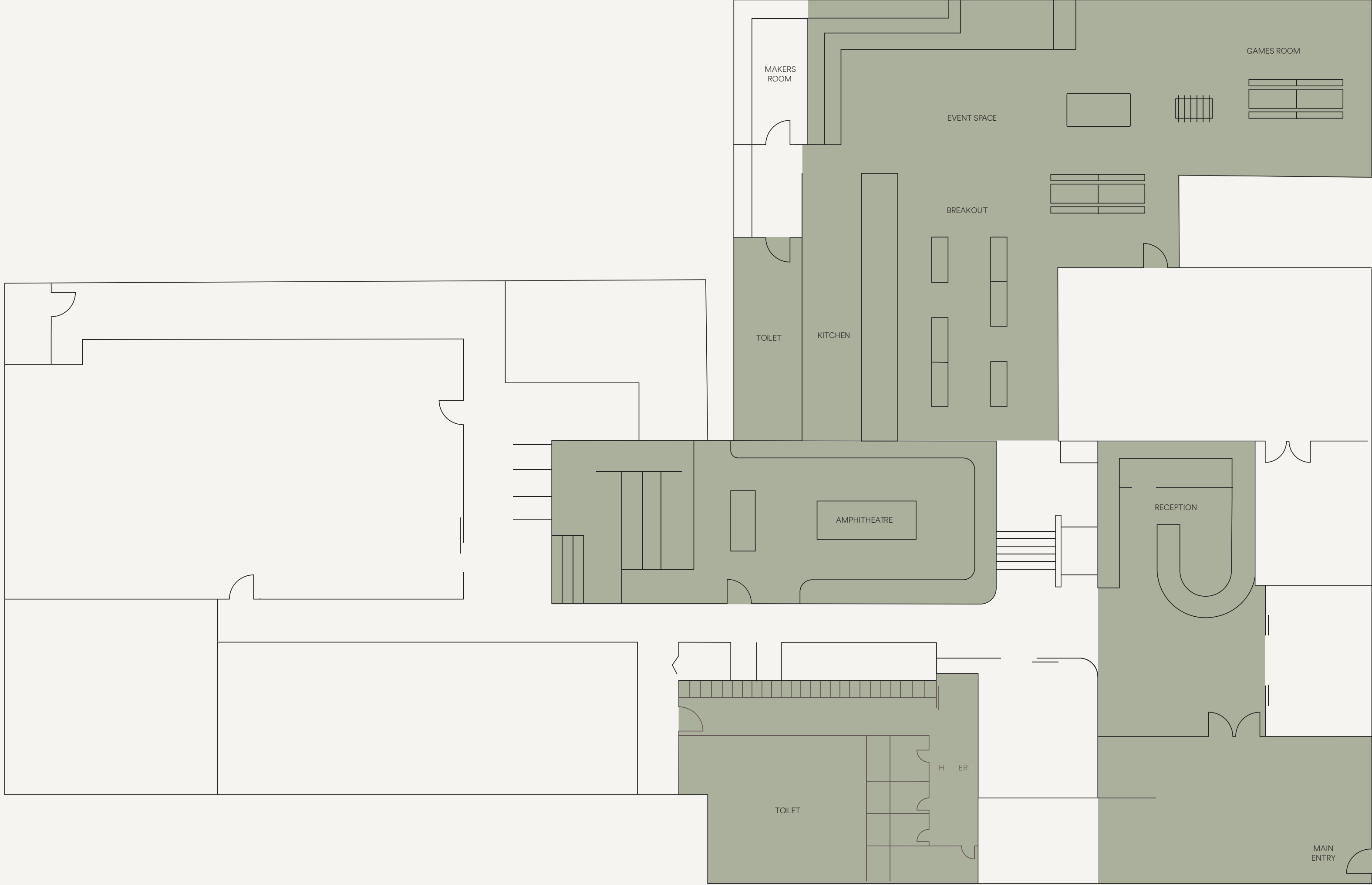


Venue Default

**Capacity**

100 Standing

# Floor Plan





# Location

10-20 Gwynne Street, Cremorne, VIC 3121

## Transport Options

### Paid Parking

#### 1. Wilson Parking

70 Gwynne Street

\$7.00/hr

\$28.00/day

#### 2. Green Street Car Park

124-126 Green Street

\$7.80/hr

\$16.00/day

### Train

1. East Richmond Station

2. Richmond Station

### Light rail

1. Route 70, Stop 9, Lennox St

2. Route 78, Stop 55, Adelaide St/Church St

# Get in Touch

1300 848 568

[events@thecommons.com.au](mailto:events@thecommons.com.au)

[www.thecommons.com.au](http://www.thecommons.com.au)

the commons