

# Avive AED® Training Pad Installation Guide

## Items Needed for Replacement

- Avive AED® Training Cartridge
- Avive AED® Training Pad

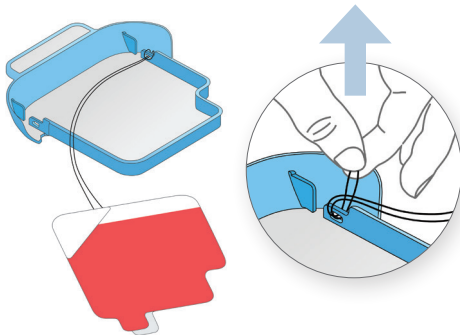
## Prepare Cartridge for Pad Swap

- Remove the Avive AED Training Cartridge from the Avive Connect AED.
- Pull the blue Training Tray out of the Training Cartridge.
- Remove the Training Tray Lid.

## 1 Loosen Pad String

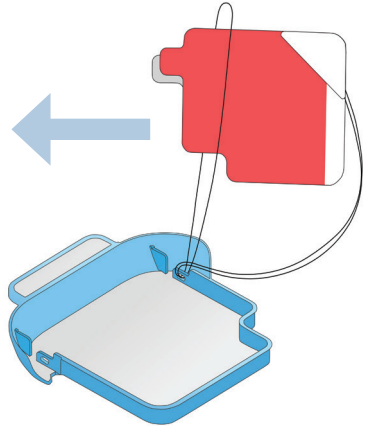
The Training Pads are attached to the Blue Training Tray in the upper right corner of the tray by a black string.

- Pull up on the small loop created by the black string until the loop grows in diameter enough to fit the Training Pads through.

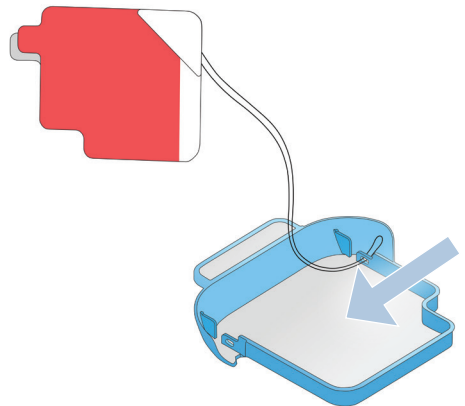


## 2 Remove Training Pads

- Pass the Training Pads through the loop created in Step 2.

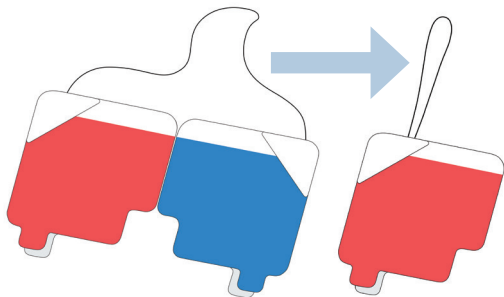


- Pull the black wire completely out of the hole on the blue Training Tray and discard used Training Pads.



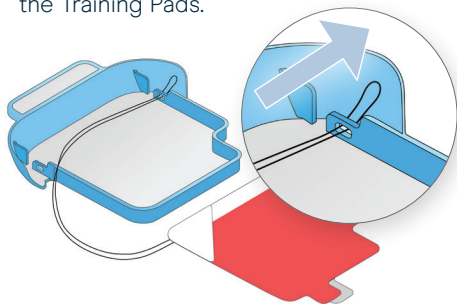
### 3 Prepare New Training Pads

- A. Obtain the new Training Pads and fold the Red and Blue pads so that the artwork on the Training Pads faces the outside.
- B. Locate the center of the black string.



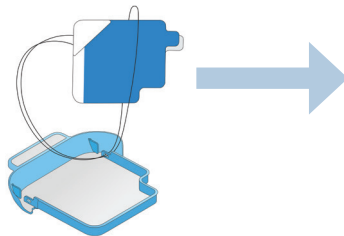
### 4 Install New Training Pads

- A. Pass the center of the black string through the hole on the upper right corner of the blue Training Tray.
- B. Pull the black string through enough to create a loop of diameter big enough to fit the Training Pads.

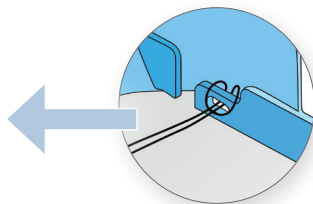


### 5 Secure New Training Pads

- A. Pass the Training Pads through the loop created in Step 7.

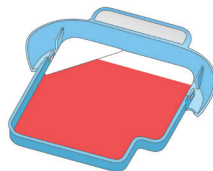


- B. Pull the black string on the Training Pads until the loop is tight on the blue Training Tray.



### Re-Install Training Cartridge

- A. Place the black string inside the blue Training Tray.
- B. Place the Training Tray inside the white Pad Cartridge.
- C. Install the Training Cartridge on the Avive AED.



CAUTION: The Avive Training Cartridge and Training Pads are for training only and can not deliver therapy. It is recommended that the Avive AED® is stored with the Avive Pad Cartridge.



Avive Solutions, Inc.  
185 Valley Drive Brisbane, CA, 94005 USA  
[www.avive.life](http://www.avive.life) | 1 (800) 489-4428  
Patents: [www.avive.life/patents](http://www.avive.life/patents)