



Child Crisis Arizona Early Head Start Program

PHOENIX • MESA

Annual Report
2024



Child Crisis Arizona
Safe kids. Strong families.

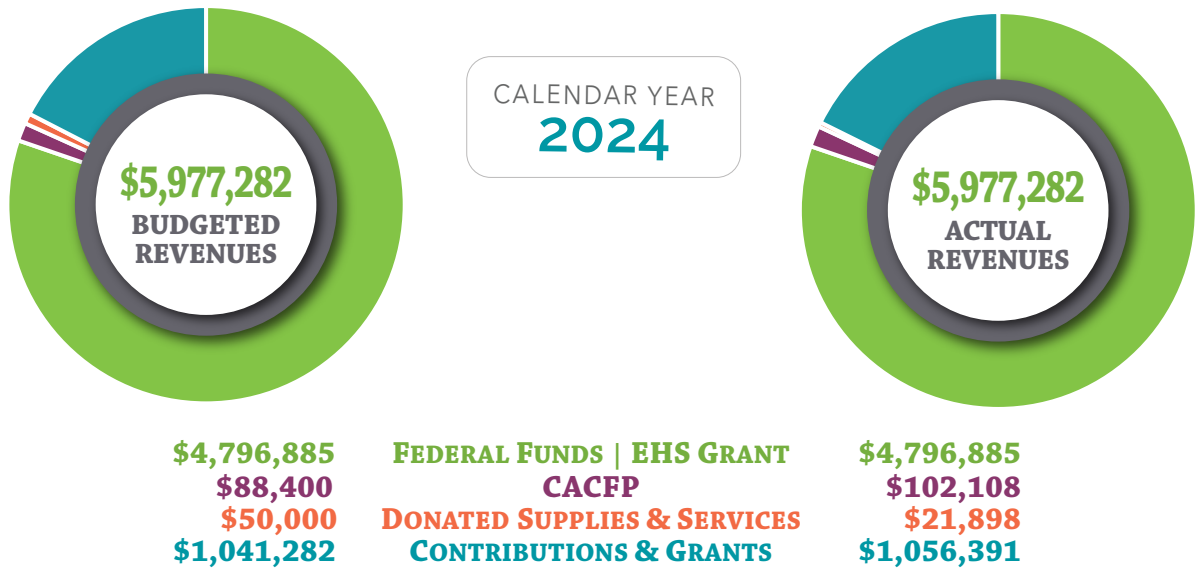


Child Crisis Arizona's Early Head Start program

Child Crisis Arizona's Early Head Start programs served **377** infants, toddlers and pregnant women in 2024 through prenatal, home-based and center-based services. Children receive a myriad of opportunities to develop the physical, social and emotional skills they will need to succeed in school. The program also has Family Support Specialists who work with families identifying strengths and needs, providing assistance and education.

budget | expenditures | audit results

The majority of budgeted expenditures for the Early Head Start program are primarily for salaries and benefits of program staff. Personnel expenses were budgeted at **\$3,403,240** and fringe benefits were budgeted at **\$983,072**. These items combined equal **73%** of the budget. Other budgeted line items include supplies, contractual expenses, travel, and other expenses.



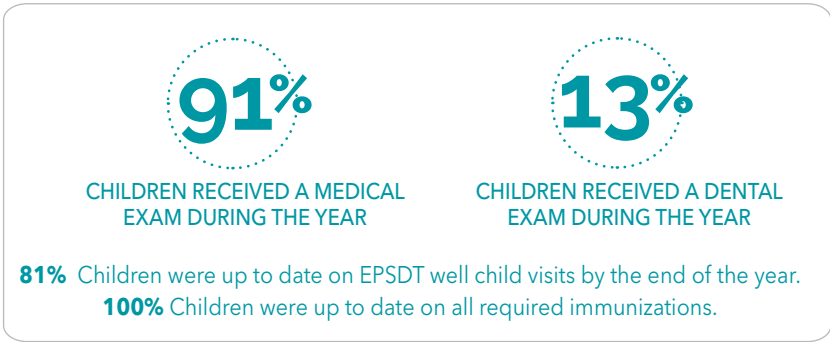
The Early Head Start program was part of the Child Crisis Arizona single audit for federal funds for the year ended December 31, 2024. The audit was conducted by the independent accounting firm of Baker Tilly, US LLP. No material weaknesses or significant deficiencies were identified in the auditors' report on internal control over major programs. The auditors' report issued on compliance for major programs was unqualified. No audit findings or questioned costs were reported.

Our most recent federal review was an Focus Area 2 review conducted by the Office of Head Start in July 2023. There were no findings during the review.

PHOENIX & MESA

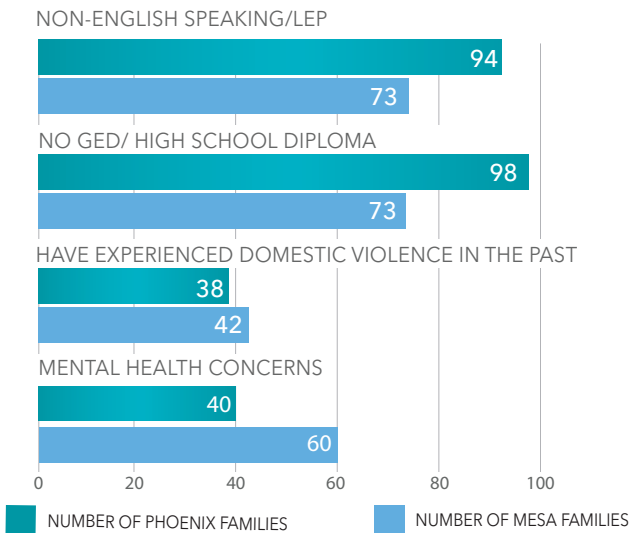
enrollment | healthcare

In 2024, we served a total of **377** children and pregnant women from **336** families and had an average monthly enrollment of **100%** of our funded slots. We served **2%** of the eligible zero to three population in our service area which includes the entire City of Mesa and Phoenix zip codes 85006, 85008, 85009, 85016, 85018, 85034 and 85041.



Highest Risk Categories Enrolled

In 2024, **153** families enrolled had an income at or below 100% of the federal poverty line and **178** received public assistance. Other risk factors included:



family engagement

family goals

In 2024, the highest areas of referrals included: Community Family Events, Food Banks and Pantries, Financial Assistance, Medical Services, Adult Education and Emergency Crisis Intervention.

PHOENIX & MESA

4,168 referrals were provided to Phoenix and Mesa families.

2,496 of those were documented as "received" indicating the family followed up on the referral and received the requested service.

EVENTS

Community family events were among the most requested referrals in 2024, and in response, we hosted the following activities:

- Petting Zoo & Health Fair
- Curriculum Night
- Spring Picnic Social
- WOYC Pancake Breakfast
- Family Pool Party
- Father Engagement Event
- Mother Engagement Event
- Trunk or Treat
- Gobble Up a Good Book

Parent Meetings and Workshops

To support and empower caregivers, we hosted **20** parent meetings and **11** educational workshops covering a range of important topics, including:

- Workforce Readiness: Job training, Job Search, Resume Preparation, and Interview Prep
- Mental Health: Dealing with Stress
- Navigating the AZ Health System: Child and Family Physical/ Dental Health
- Navigating the AZ System- IFSP and EIP
- TSG Data Sharing
- Tenant Rights/ Rental Assistance/ Affordable housing
- Financial Literacy
- End of Life Preparation: Life Insurance Funeral Planning
- Domestic Violence
- Child and Family Dental Health
- Substance Abuse Prevention

Family Goals

Highest goal categories included: Positive Parent/Child Interactions and Parenting Skills, Adult Education, Health, Accessing Community Resources, Financial Security and Family Engagement.

516 goals were achieved by 250 families during the 2024 year.

88 % Parent Workshop participants felt that topic was beneficial to them and their family walked away with new and useful information.

46 % of Phoenix families attended at least one workshop.

28 % of Mesa families attended at least one workshop.

program quality



Both of our Early Education sites were awarded a 5-Star “Highest Quality” rating from Arizona’s Quality First program, reflecting our commitment to excellence in early childhood education. This top-tier rating recognizes programs that significantly exceed quality standards through:

- Health and safety practices that promote children’s well-being
- Skilled teachers who turn everyday moments into learning opportunities
- Learning environments with age-appropriate books, toys, and activities that support emotional, social, cognitive, and language development
- Daily opportunities for active play and hands-on exploration
- Teacher-child interactions and engaging conversations that build language and promote thinking and social skills

In 2024, our Early Head Start program also received the Program of Excellence accreditation from the National Head Start Association—an honor awarded to only 14 programs nationwide. This recognition highlights our outstanding program management, service delivery, and unwavering focus on strong outcomes for children, families, and communities.



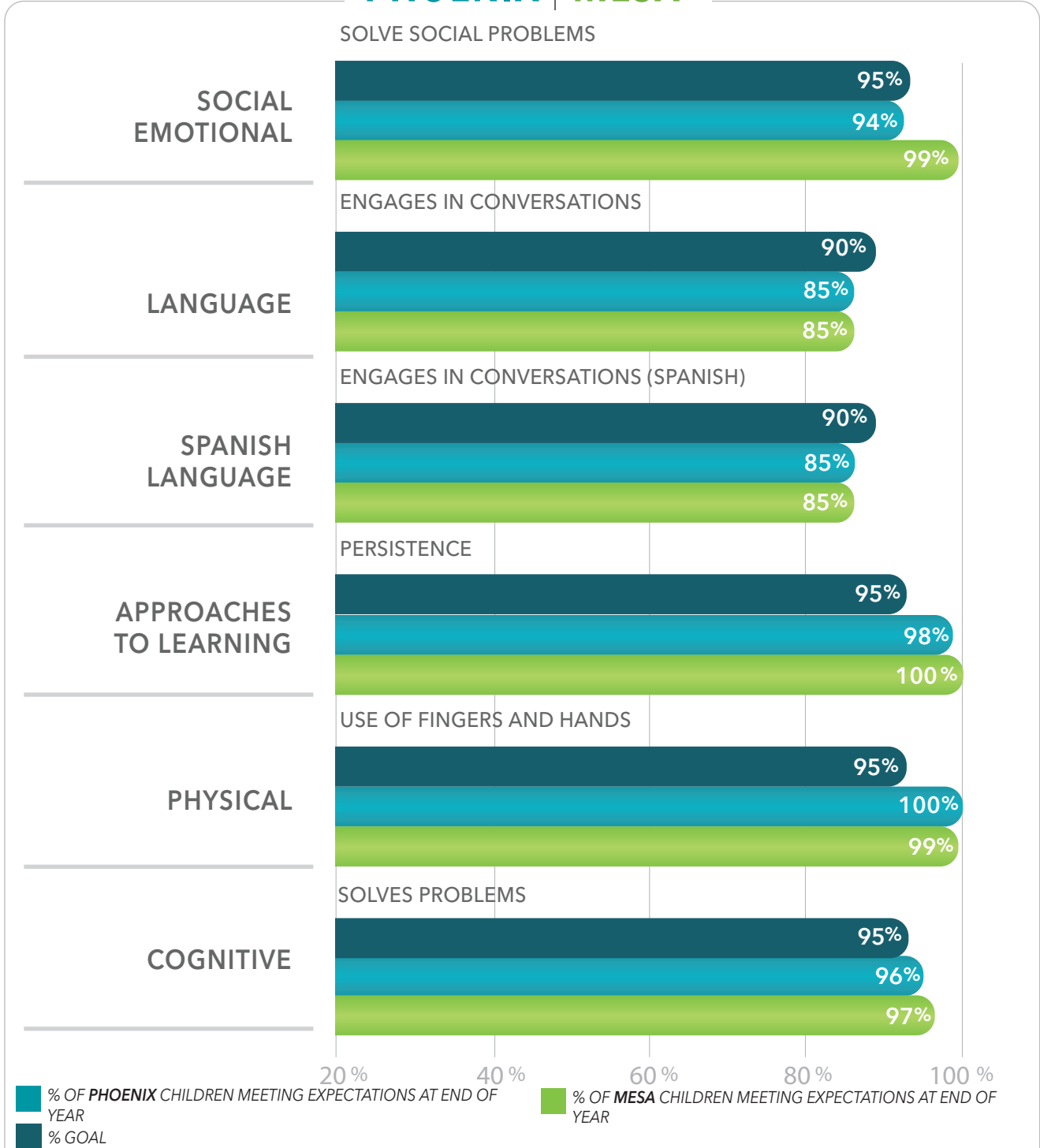
school readiness

School Readiness Goals define the essential skills children need to be successful when entering school. To support these goals, teachers receive ongoing training across all areas of development. Throughout the year, observations are conducted to assess both teacher-child interactions and children's progress in key domains, including social-emotional, cognitive, physical, and language development.

Using tools such as the Toddler CLASS and ITERS, teachers gain insights into how their practices impact child outcomes. These observations, along with anecdotal child data, help guide individualized strategies and classroom activities that align with school readiness goals. This process of observation, reflection, and planning allows us to measure and aggregate children's progress, while also informing professional development and enhancing teaching practices.

Our early education programs maintain strong engagement, with an average attendance rate of 88%, supporting consistency in learning and developmental growth.

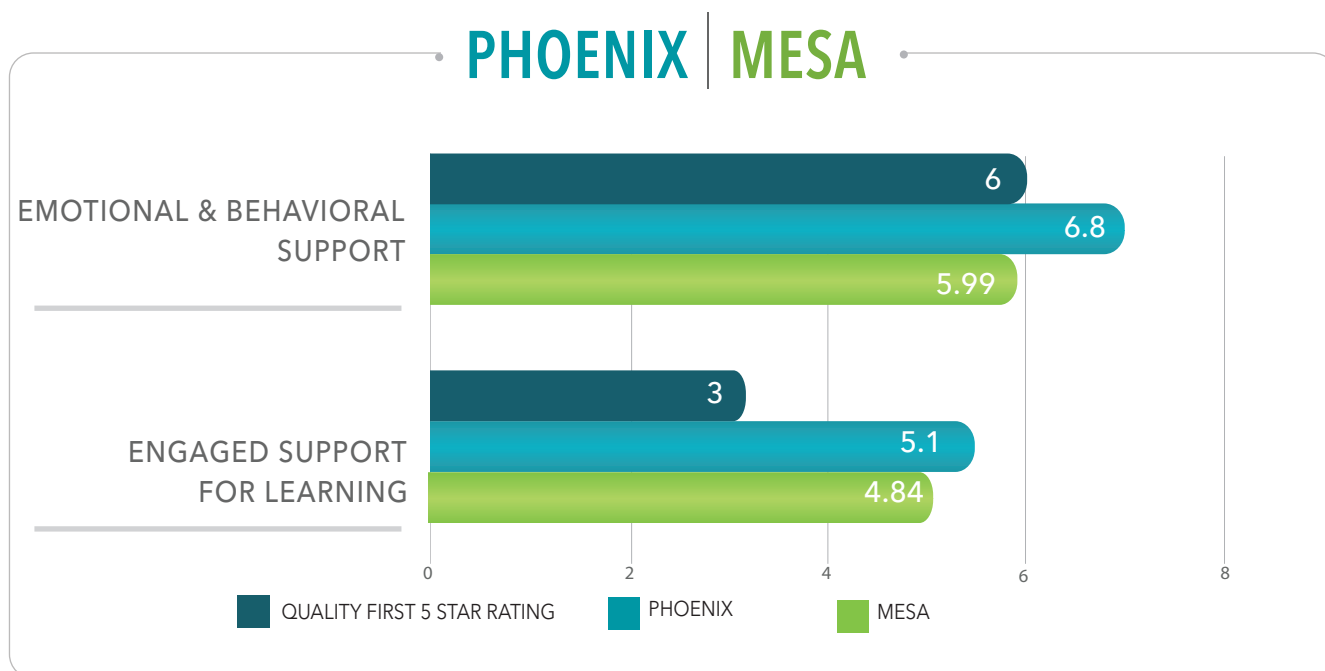
• PHOENIX | MESA •



school readiness

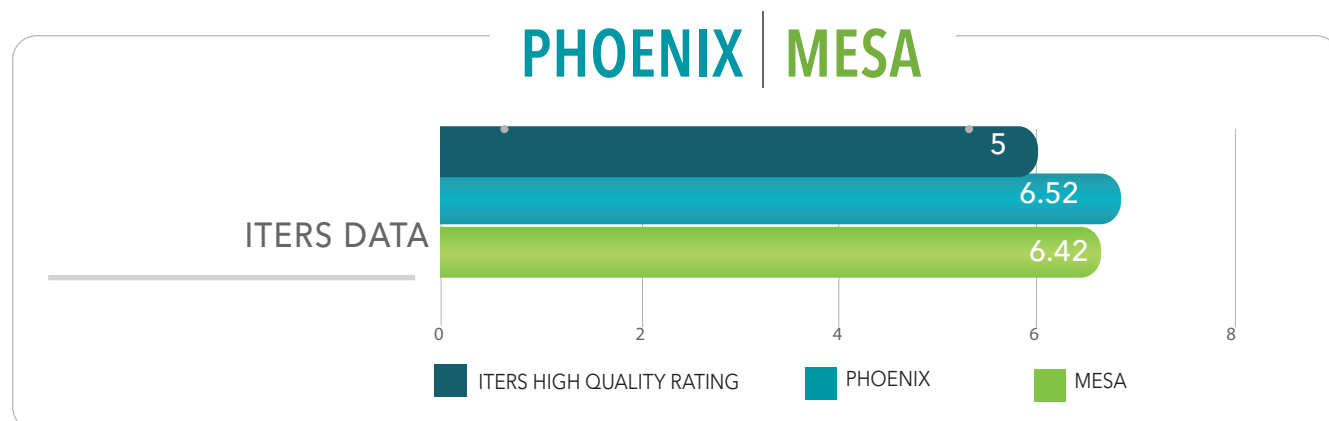
TODDLER CLASS DATA

The Classroom Assessment Scoring System (CLASS) is a tool that examines teacher-child interactions. The tool observes in the areas of emotional and behavioral support and engaged support for learning. Through these areas Teachers are assessed on specific examples of practices that examine behaviors and responses including, supportive relationships and language skills. Teachers are observed using the CLASS tool throughout the year with in-house observations and every two years through a formal assessment. The assessment period ended for both the Mesa and Phoenix site and were awarded a Five Star rating of Highest Quality.



INFANT AND TODDLER ENVIRONMENT RATING SCALE

The Infant and Toddler Rating Scale (ITERS) is a tool that measures classroom environments including indoor/outdoor spaces, activities, health and safety practices, and teacher-child interactions. ITERS observations are completed annually and provide a comprehensive assessment of all the components that make up a teaching environment. Teachers are able to be reflective on their environments and make adjustments that best fit the needs of their children. ITERS classifies high quality as a Good Rating Score of five (seven being the highest). Mesa and Phoenix scores are above the Good Rating, with scores representing high quality classroom environments.



2024 Community Needs Assessment

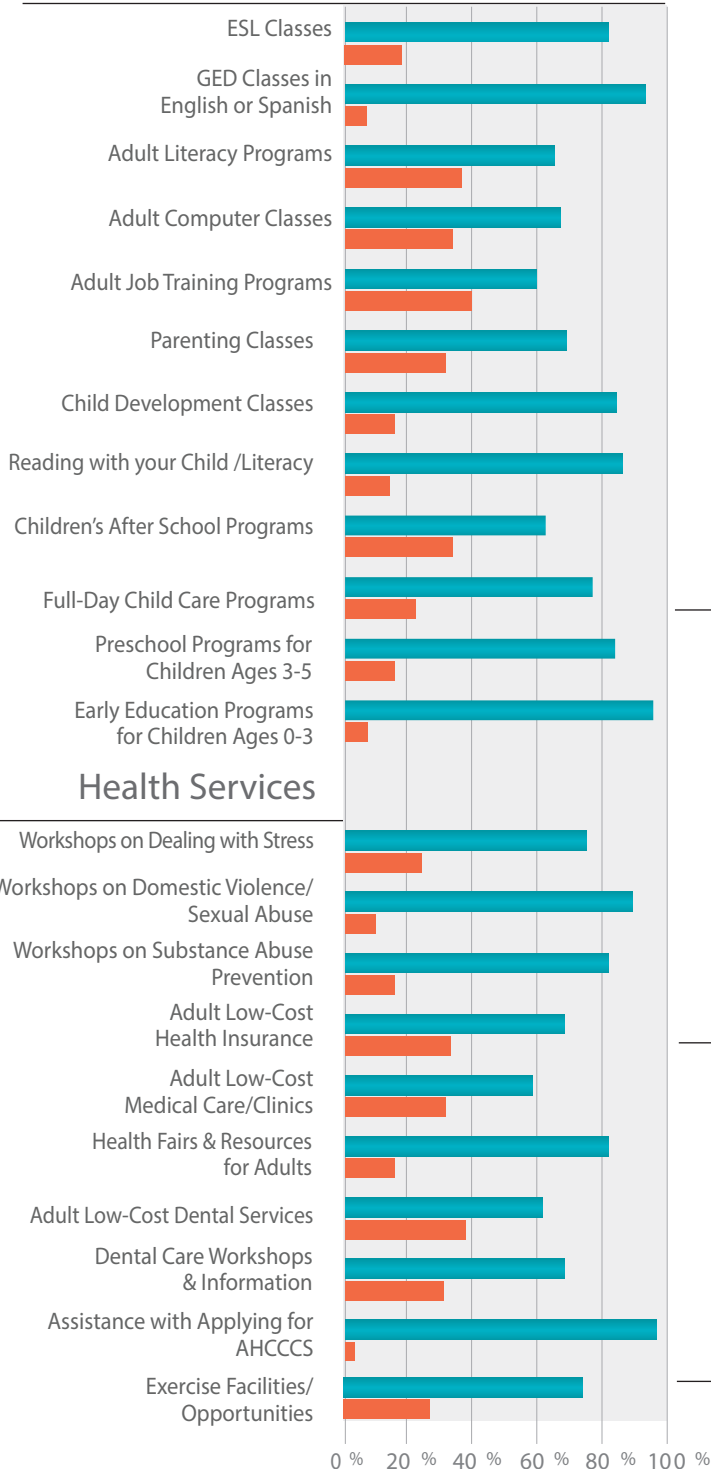
Child Crisis Arizona surveyed parents in Mesa and Phoenix to ask about strengths and needs in their community. Strengths are topics parents felt they had the resources to address while needs are areas they felt they could use more assistance in. The following is a summary of their responses:

STRENGTHS | NEEDS

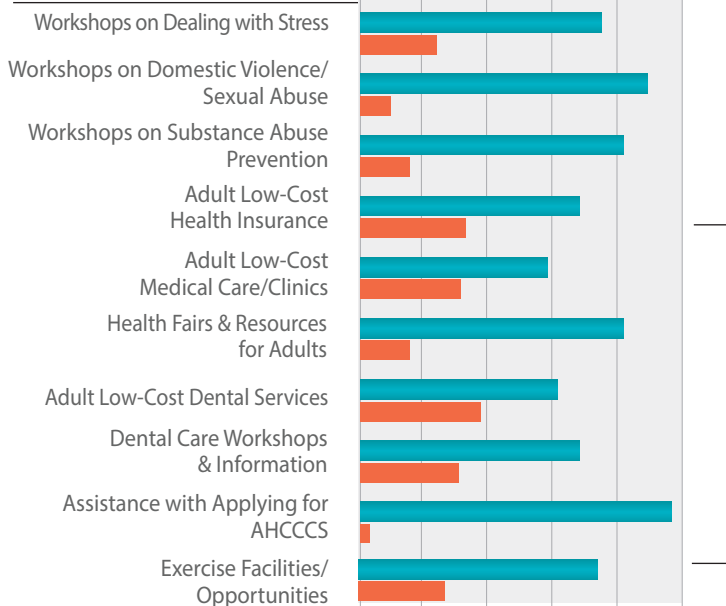
89% of families reported that their knowledge of community resources has increased since enrolling in our program.

PHOENIX

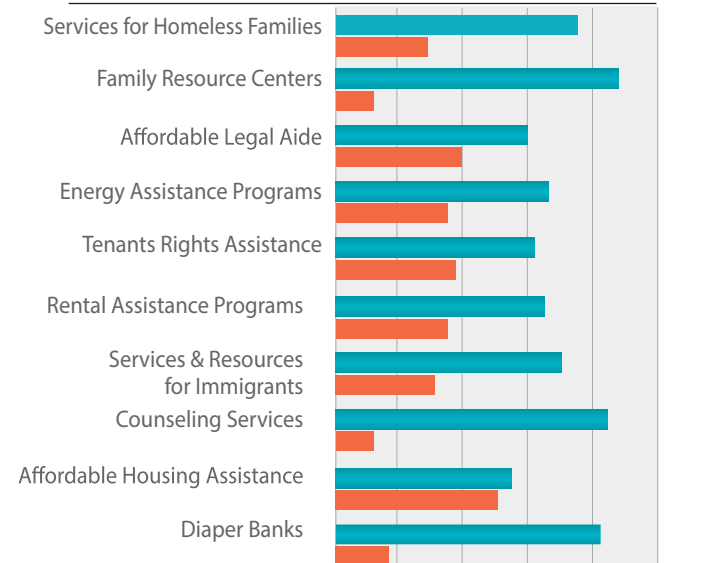
Education Services



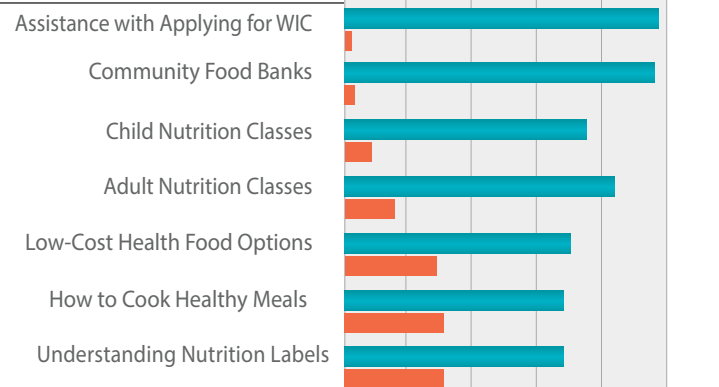
Health Services



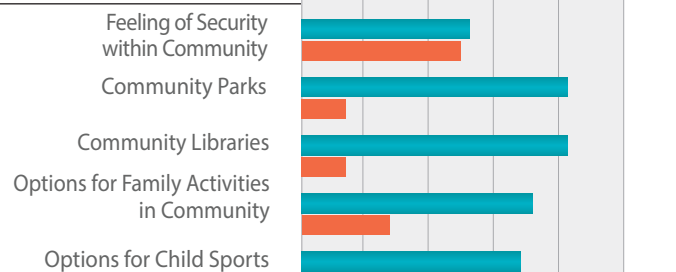
Social Services



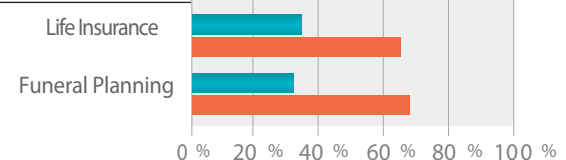
Nutrition Services



Community Services



End of Life Preparation



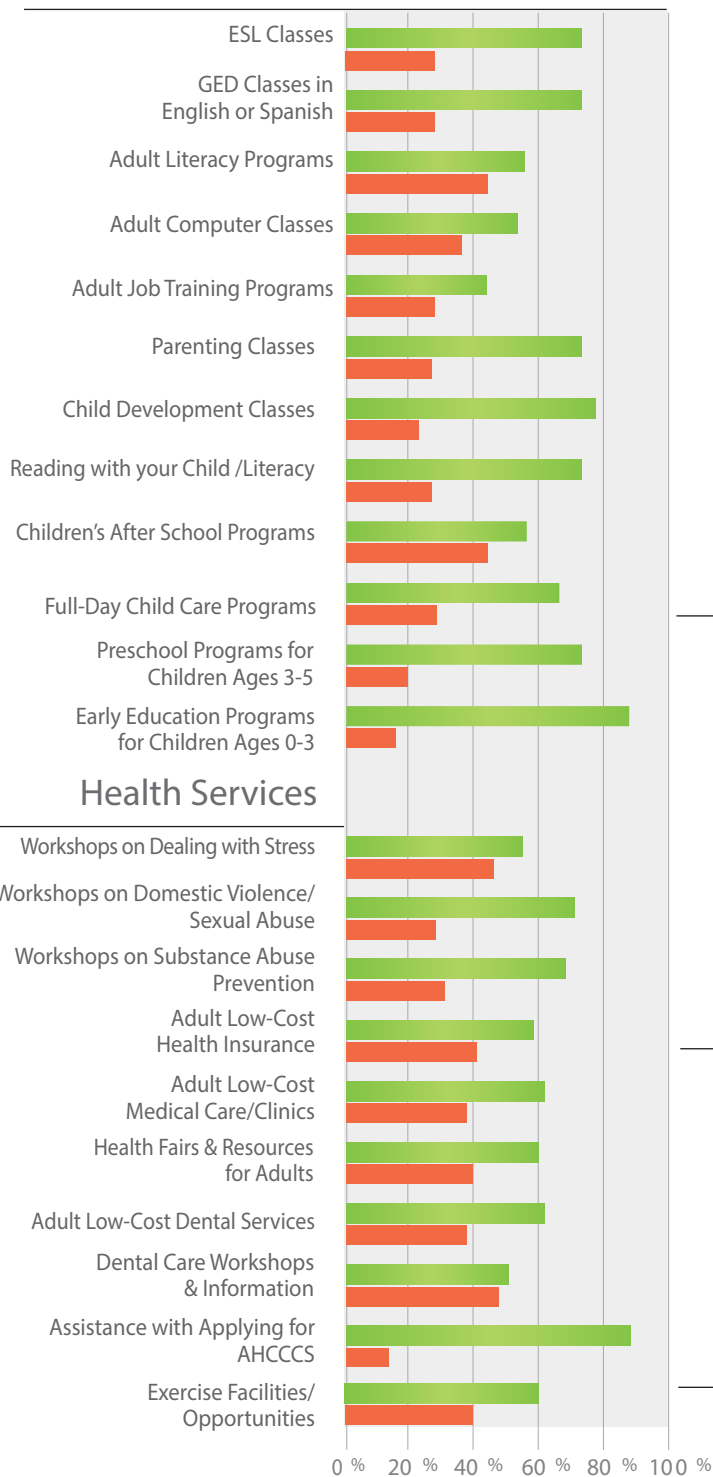
2024 Community Needs Assessment

MESA

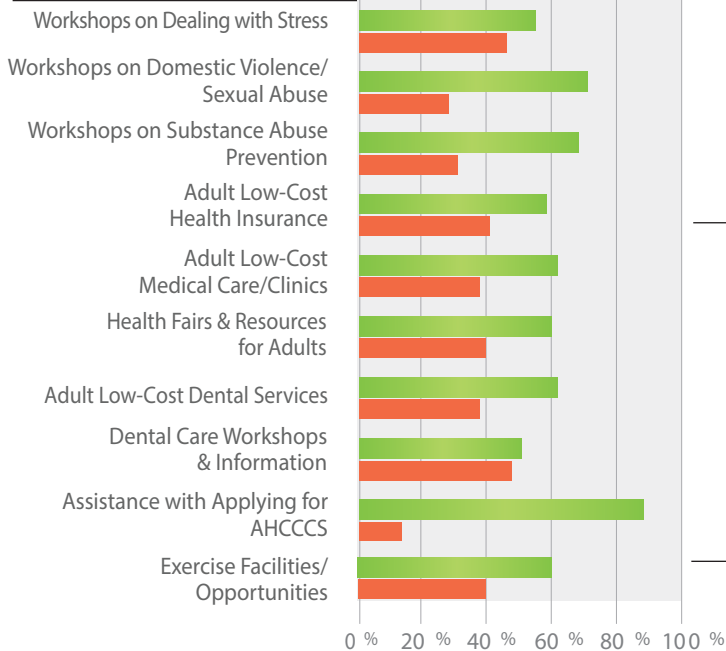
STRENGTHS | NEEDS

90% of families reported that their knowledge of community resources has increased since enrolling in our program.

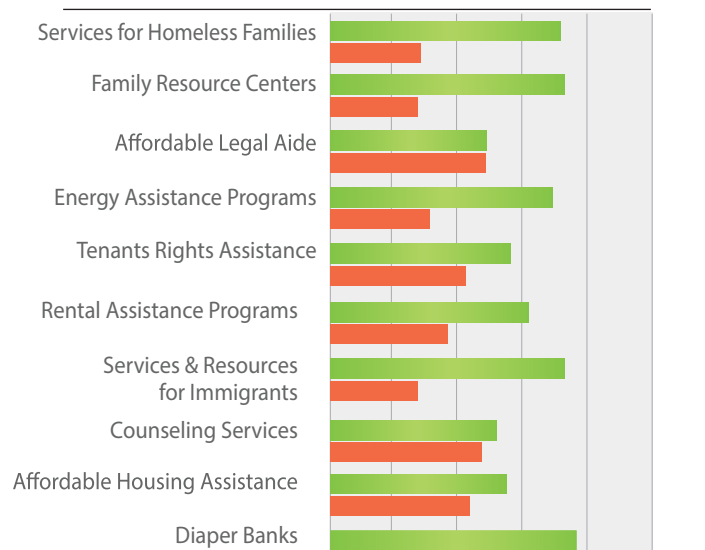
Education Services



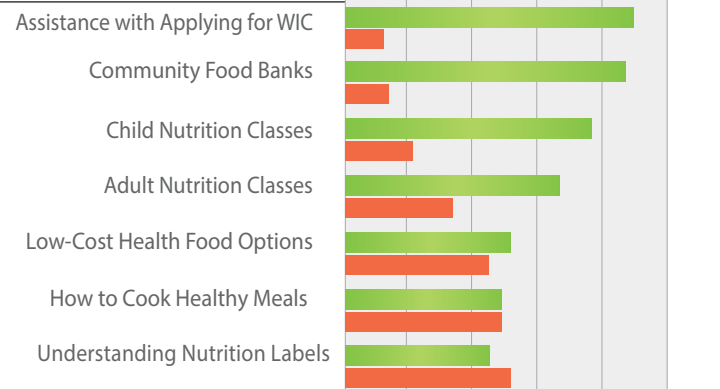
Health Services



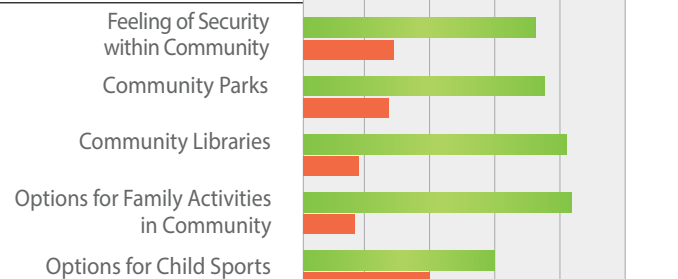
Social Services



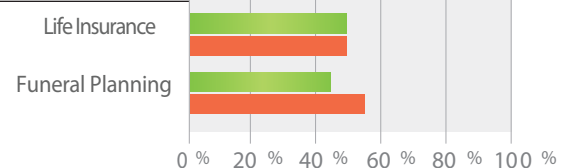
Nutrition Services



Community Services



End of Life Preparation



"I believe that
investing in our children's development
from the earliest age is the
single most important contribution we can make..."

~UNKNOWN



Child Crisis Arizona
Safe kids. Strong families.

FOR MORE INFORMATION PLEASE VISIT

childcrisisaz.org