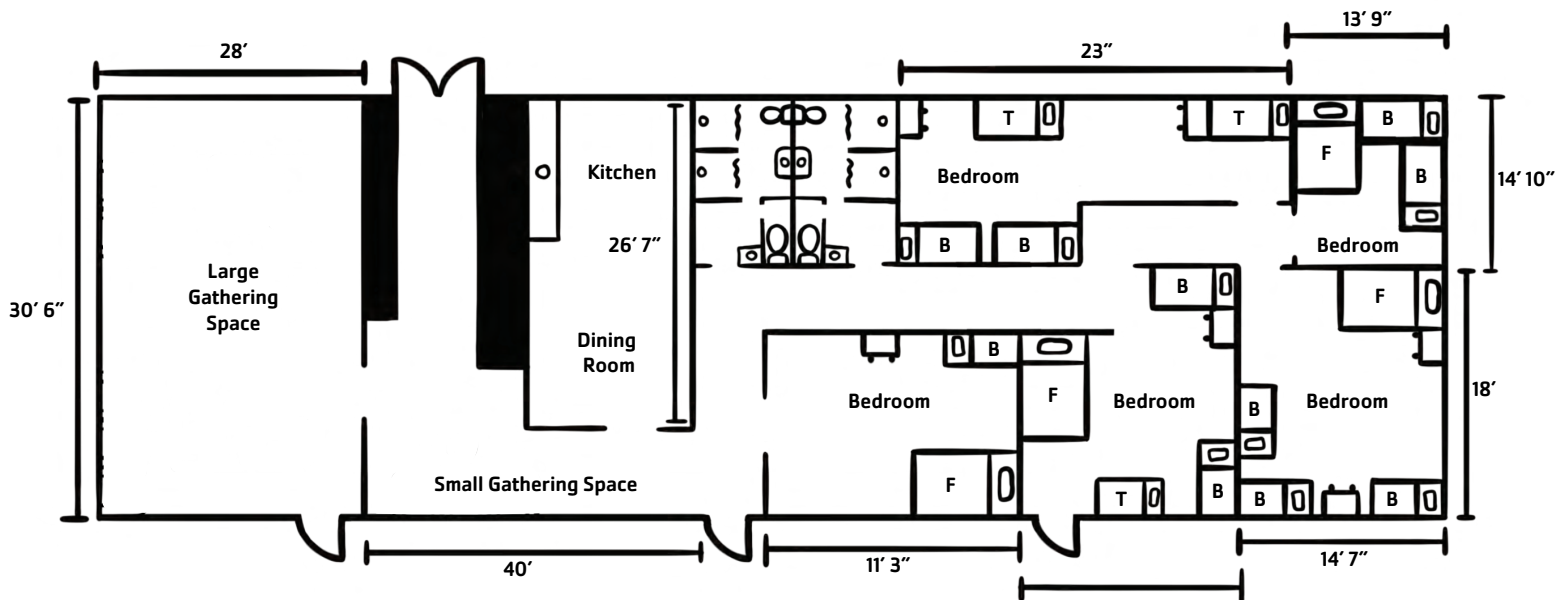


QUARTERMASTER'S BUILDING

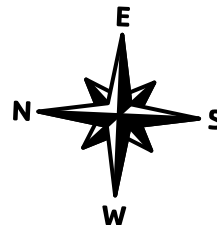
Max Capacity 29 | 5 Bedrooms | Wheelchair Accessible



Bed Size: Twin (T), Bunk (B), Full (F)

Quartersmasters has 5 bedrooms on the South end of the building, each hosting a variety of bed sizes and room sizes sleeping 3-7 people. The meeting room at the North end of the building holds chairs for 30 people, with a ceiling mounted projector, podium, retractable screen, and a white board. In the early 1900's it was originally used as a military storehouse, and was remodeled in 2001 to now be fully accesible to wheelchairs.

Kitchen amenities include household appliances, a 4-burner electric stove and oven, refrigerator, chest freezer, microwave, coffee maker, and a dishwasher. Stocked cooking and baking utensils, and cutlery for 29 people.



EMERGENCY

FIRE:

If you see any sign of fire or smoke, immediately activate the building fire alarm and call 911. Call the site manager 360-678-1187 and evacuate to the basketball courts.

EARTHQUAKE:

After the shaking has stopped, South Campus evacuates to the basketball courts and North Campus evacuates to the North Flag Pole.

TSUNAMI:

South Campus evacuates to the Lighthouse, North Campus evacuates to the Bunker Firepit.

*Not fit to scale

