

BEY_____BEY™



An exclusive destination in *Miami*, where the intimate ambiance of a well-appointed home merges seamlessly with exceptional service and quality.





CAFE
5:00-8:00
Specialty coffee
Cappuccino
Latte
Milkshake
Smoothie
Happy Hour
Tuesday and
Wednesday
4pm to 7pm
\$6 min | 10% off

BEY

OVERVIEW

Bey_Bey is your go-to venue, meticulously designed to offer the personalized touches of a dear friend's home, ensuring a welcoming yet upscale experience throughout your visit. Nestled in the vibrant Sunset Harbour neighborhood of Miami Beach, Bey_Bey offers guests an oasis of taste, quality and beauty, while focusing on the nuanced details in life - those little things that make good times great.



LOCATION: SUNSET HARBOUR

Upmarket neighborhood in South Beach currently undergoing significant additional luxury development.

High walkability - trendy boutiques, fitness studios & high-end grocery

Located within walking distance of:

- The Standard Hotel
- Sunset Harbour Yacht Club
- Sunset Island I and II (ultra luxury private homes)
- North Bay Road
- Lincoln Road
- Venetian Causeway
- Belle Island (luxury condos/apartments)
- West Avenue condos
- New Marriott Hotel

Fully operational and permitted restaurant, bar and coffee shop, with a total of 6500 sq ft including:

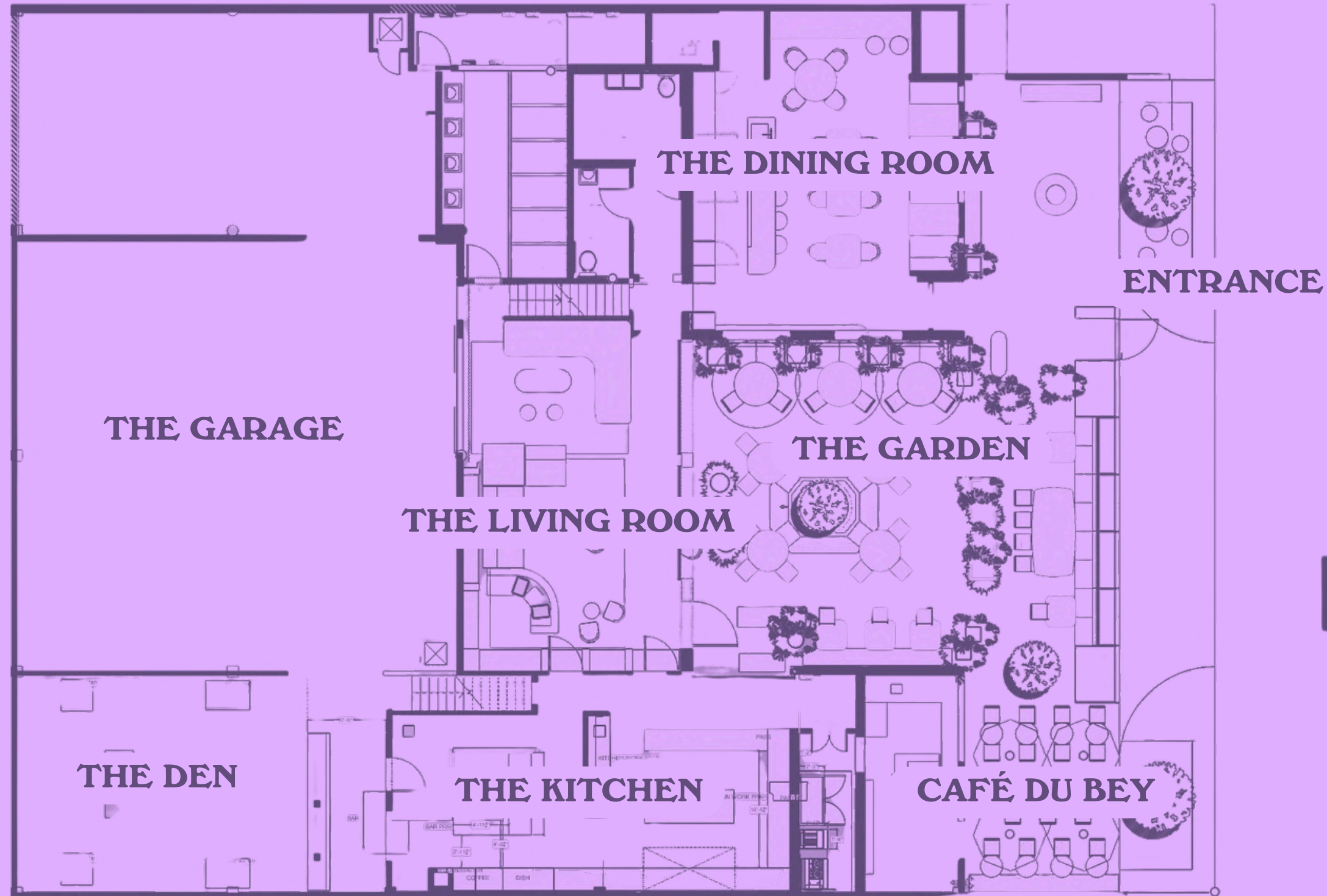
- Large indoor/outdoor cafe (435/565 sqft)
- 1 covered patio (325 sqft)
- Private dining room: (565 sqft)
- 1500 sq ft private event space
 - Can be used for special events and rentals
 - Includes huge hi-res LED screen
 - Private bar connected to kitchen
 - Lofted VIP area = 475 sqft (19 x 25 ft)
- 1500 sq ft additional white box space available to rent for special events
- Liquor license for on-premise sales until 2 AM
- x2 large climate controlled, glass walled wine displays
- x2 gender neutral bathrooms
- Hi-Fi sound system
- HVAC + Fans
- \$25K+ Champagne and wine stock
- Elevation above surrounding neighborhood flood line

VENUE DETAILS

***All venue spaces can be actived independently or connected.**



HOUSE FLOORPLAN



BEY  **BEY**

THE ROOMS

THE DINING ROOM

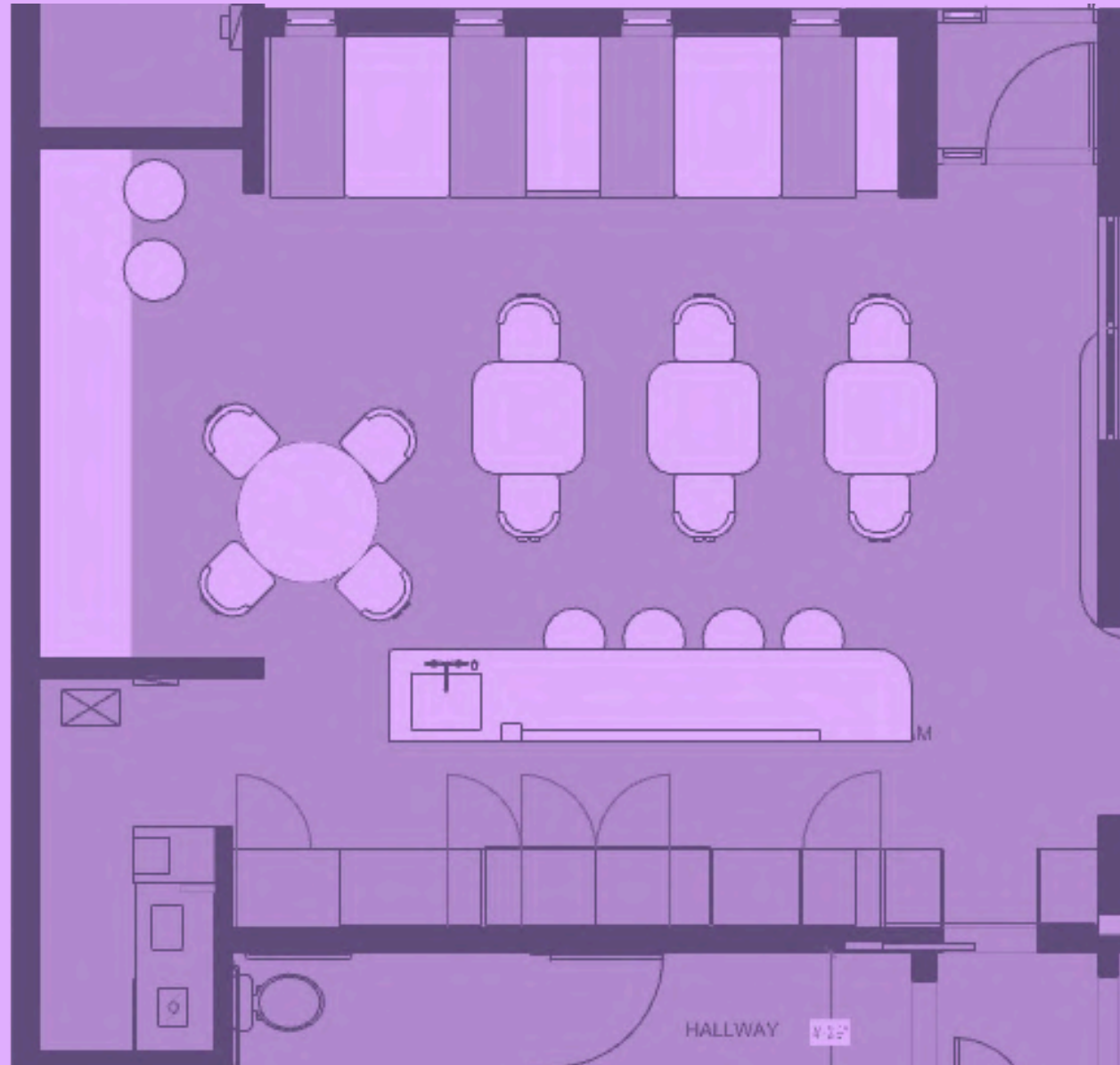


Center tables come together for large groups or separate to accommodate small parties. Additional table by the pantry can seat up to 8 guests. Two comfy and intimate booth, perfect for both dining or cocktails.

The cocktail bar is designed like a kitchen island, with seating for up to 6 and an open corner for guests to order. Made of an exquisite textured stone and covered with drink accouterments and objet d'art, feels like a well appointed home kitchen instead of a busy back bar.







CAPACITY:

Standing - 50 people

Seating - 28 people

FEATURES:

- **Marble counter Bar**
- **Dining room set up**
- **A/V upon request**

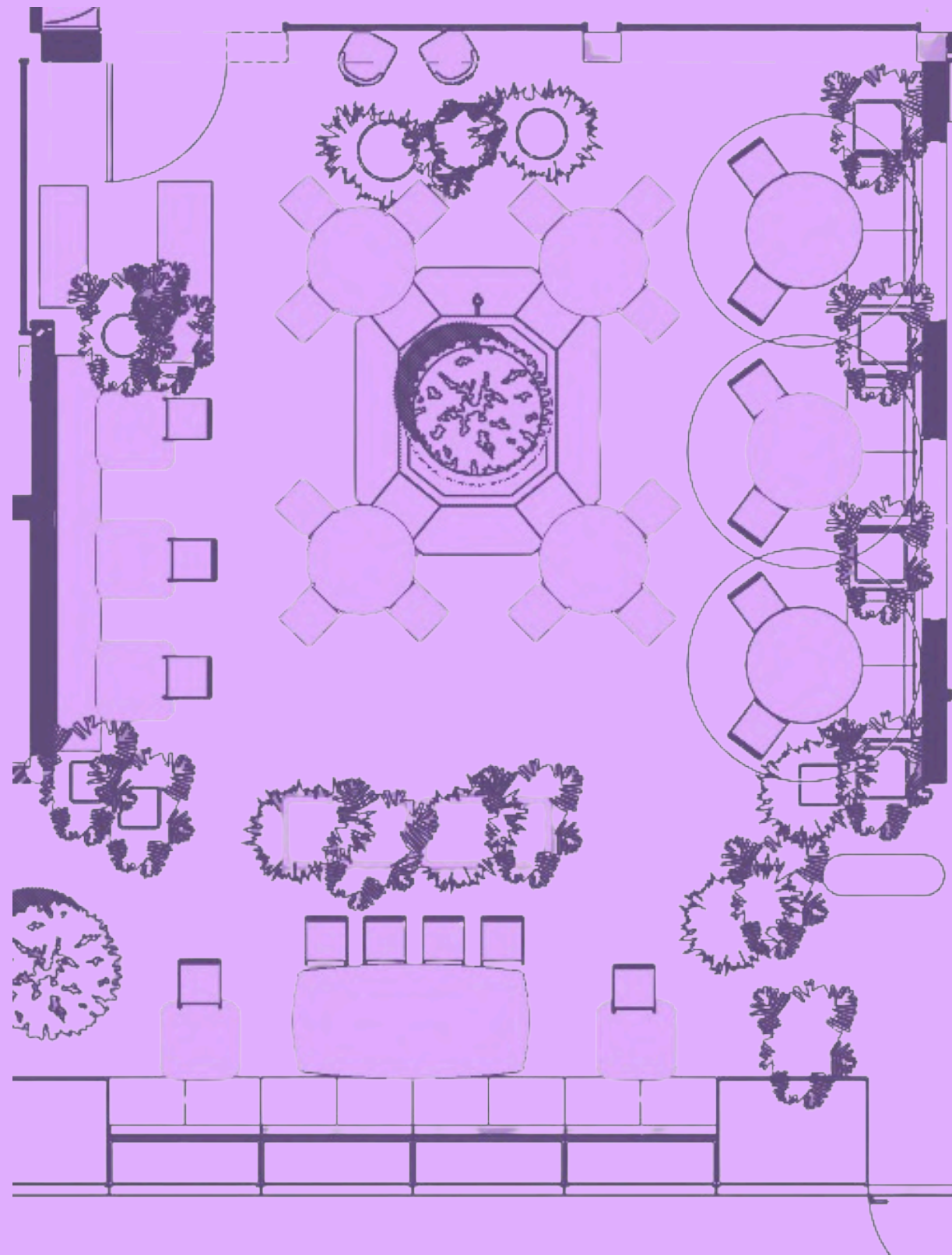
THE GARDEN

The covered outdoor Garden allows guests to enjoy the beautiful weather and breezes from the bay.



Centered around a custom coral fountain-like planter, the area is filled with flora and dotted with individualized mosaic tables, unique chairs, and cozy loveseats.





CAPACITY:

Standing - 60 people

Seating - 40 people

FEATURES:

- **Covered open air patio**
- **Coral planter**
- **Mosaic tables**

THE LIVING ROOM

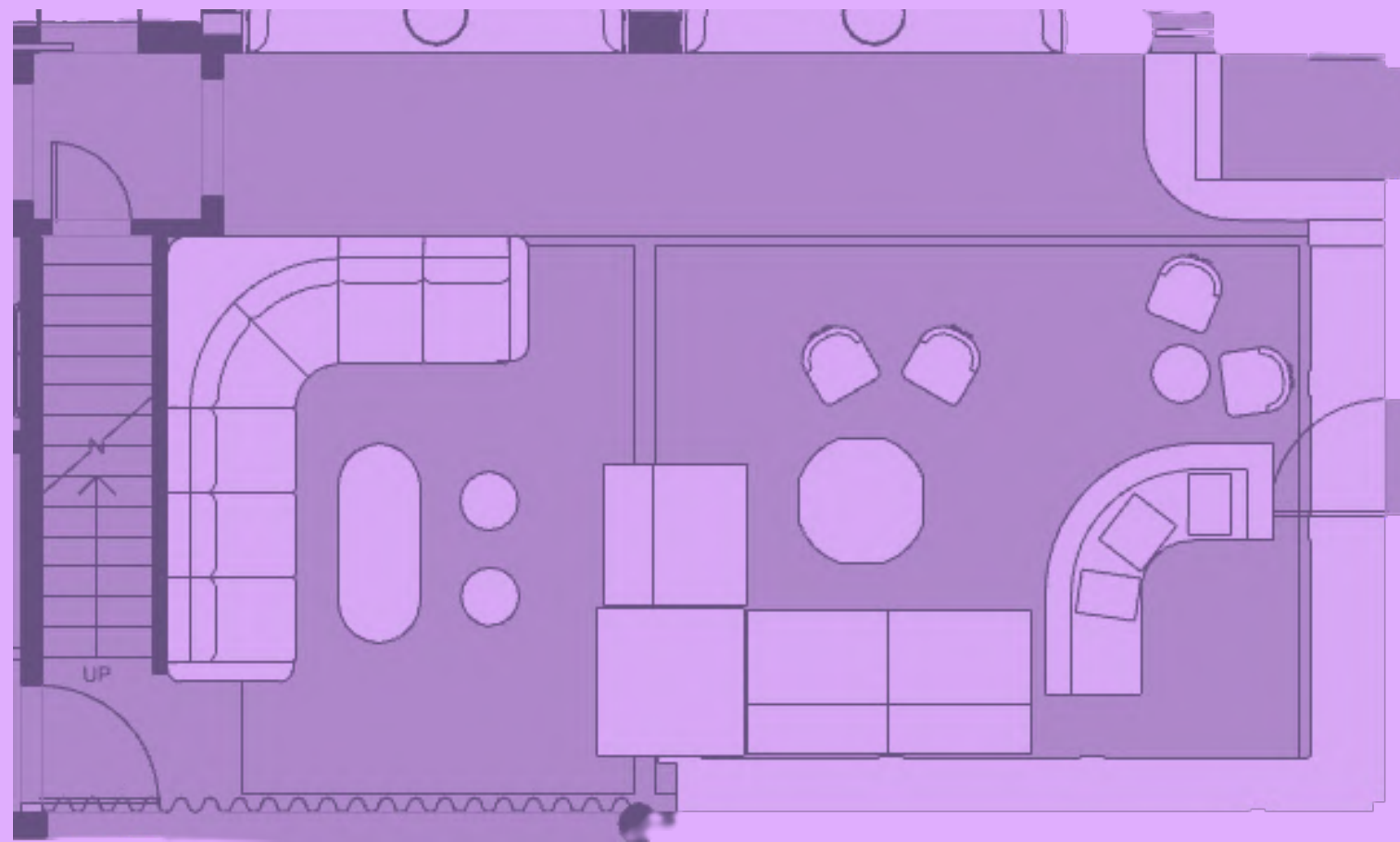


For a more social setting, mixed seating offers groups of different sizes and intentions options to suit their mood. Table service and simplified dining menu lets you kick back and catch up or tuck in and get close.

Tables, couches, and other seats can be moved around the room. The curtains can be drawn back to reveal an additional bar situated under an oversized disco ball, adding space and service for larger groups.







CAPACITY:

Standing - 75 people

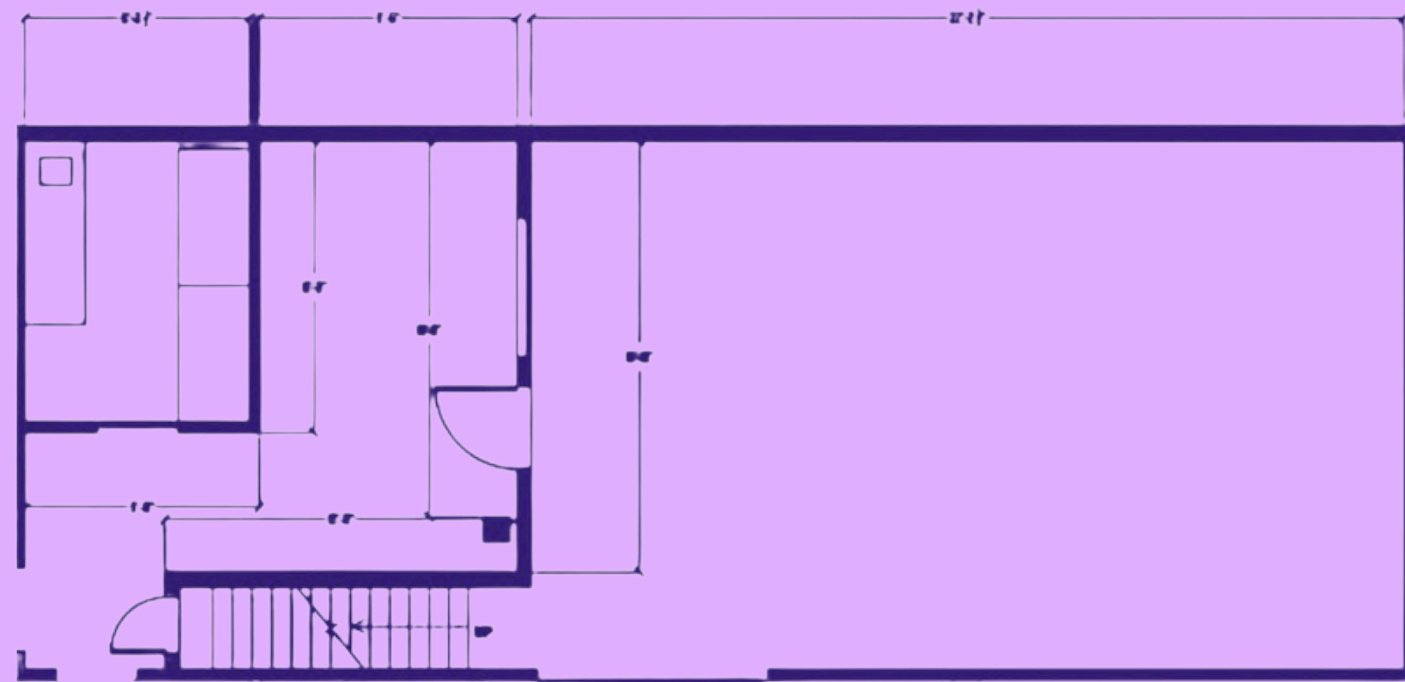
Seating - 25 people

FEATURES:

- **Hi-Fidelity sound system**
- **Table service**
- **Lush decor**
- **A/V upon request**



THE DEN



CAPACITY:

Standing - 100 people

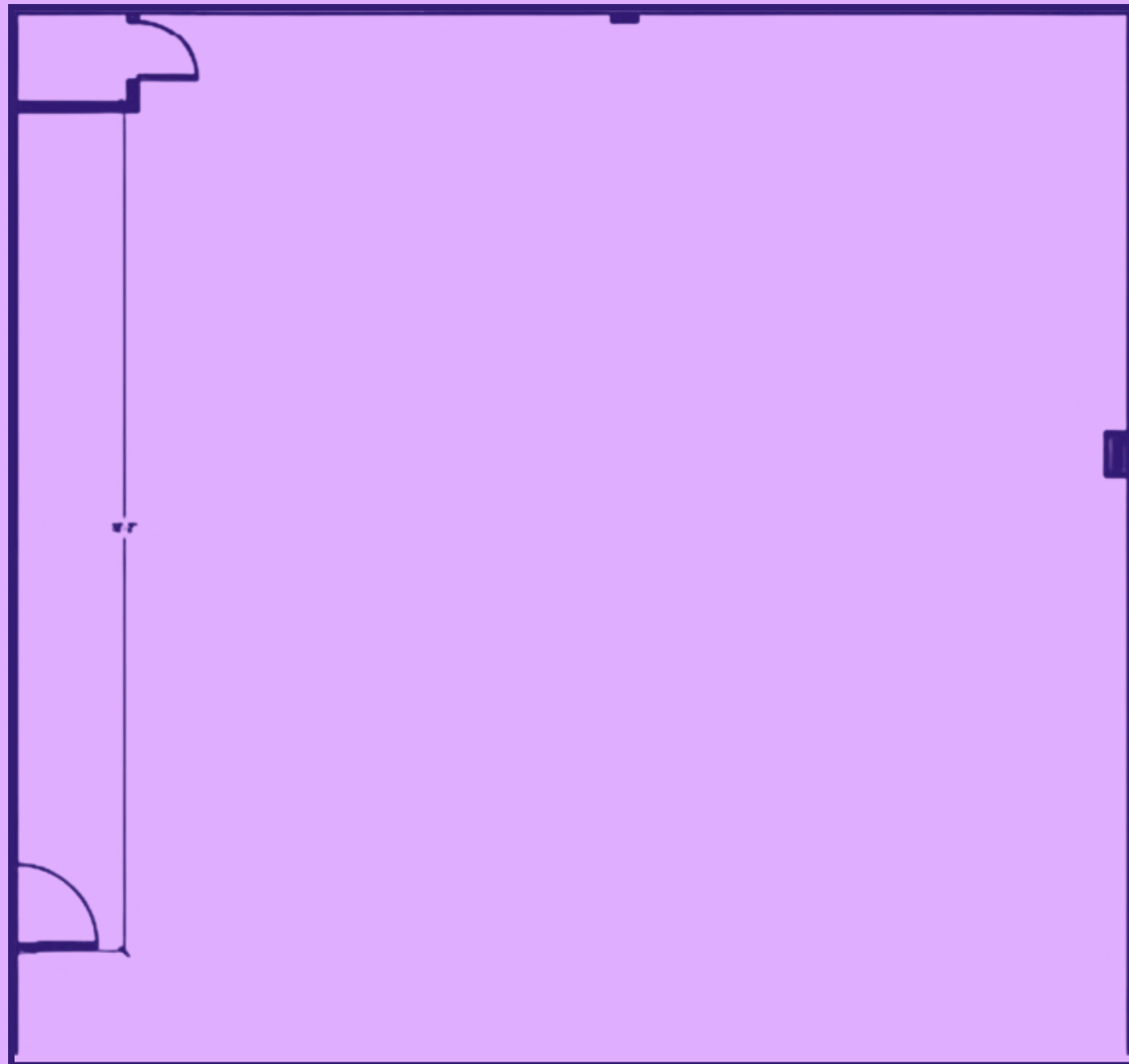
Seating - 50 people

FEATURES:

- **30ft LED Screen**
- **Curtained or mirrored walls**
- **A/V upon request**
- **Can connect with the Studio space**



THE GARAGE



CAPACITY:

Standing cocktail - 150 people

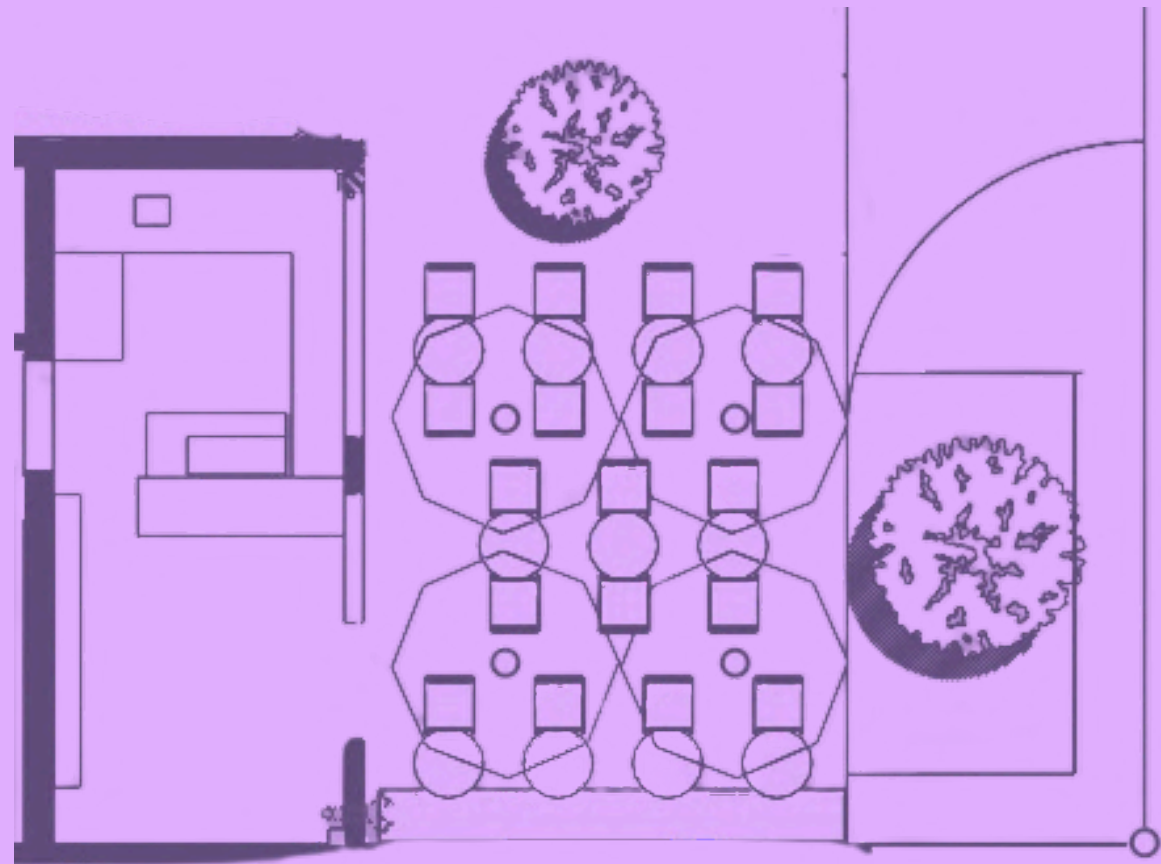
Seating - 80 people

Features:

- **Large, black box room**
- **High quality speaker system**
- **Can connect with the Den space**



CAFÉ DU BEY



CAPACITY:

Standing - 40 people

Seating - 20 people

FEATURES:

- **Covered outdoor seating**
- **Floral Garden**

PRESS

HAUTE LIVING

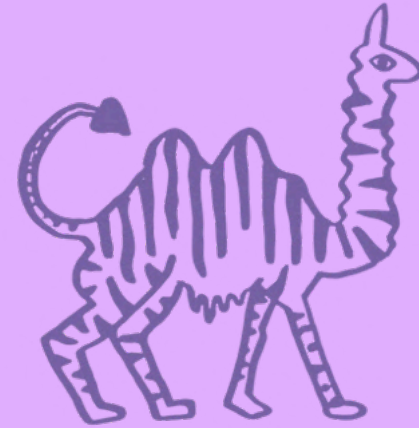
MIAMI
New Times[®]

OCEAN DRIVE

world.
redeye
.com



THE HUNGRY POST



**For inquiries, please contact:
events@beybey.co**