



2009 Phenom 100 Specifications

REG: N983CA
SN: 50000029



Citizen Air

1402 Fairchild Airport Rd, Port Angeles, WA 98363

Training | Scenic Tours | Charter Management | Transactions | Consulting | Jets | Turboprop | Piston

91 | 91K | 135

2009 Phenom 100 - N983CA - 50000029

Highlights

- Garmin G1000 NXi Prodigy Flight Deck
- FlightStream 510
- Concord Batteries
- Transponder Datalink STC

Airframe

- 1,801.6 Hours
- 1,403 Landings
- Date in Service 6/1/2009
- Operations 91K
- Maintenance Tracking CAMP System

Engines

Pratt & Whitney PW617F-E

	PCE-LC0064	PCE-LC0065
Hours	1,801.6	1,801.6
Cycles	1,403	1,403
Program	JSSI 100%	JSSI 100%

Exterior

July 2025 Paint

Snow White upper fuselage and tail, accented by Rich Blue lower fuselage, tail, and engines. Butterscotch accents along the fuselage.

Interior

Original 4 Passenger Double Club Interior

Finished in light pearl-gray leather seating and sidewalls, rich blue carpet to contrast. Side ledges and tables feature satin-finished medium-tone wood veneer.

Maintenance

Inspection	Completed	Next Due
12 Month	6/3/25	6/3/26
24 Month	6/3/25	6/3/27
800 Hour	1,536	2,336
1,600 Hour	1,121	2,721
2,400 Hour	0	2,400

2009 Phenom 100 - N983CA - 5000029

Avionics

Garmin G1000 NXi Prodigy Flight Deck

- GPS/WAAS: Dual Garmin GIA 63W
- FMS: Garmin GCU 475
- Transponder: Garmin GTX 345R / Garmin GTX 33D
- Radar: Garmin GWX 68
- Weather Radar: XM Weather
- Displays: Tripple Garmin GDU 1250A
- TCAS: GTS 855
- ELT: Kannad 406 AF
- CVR: L3Harris FA2100
- FDR: L3Harris FA2100
- ADC: Dual Garmin GDC 74B
- AHRS: Dual Garmin GRS 77
- DME: Dual Honeywell KN-63

Equipped With

- Starlink Internet
- ADS-B In/Out
- Flushing Lav
- 50 CU.FT. Oxygen System
- Cockpit Voice Recorder
- Flight Data Recorder
- RVSM
- Terrain Awareness & Warning System
- Emergency Locator Transmitter
- Traffic Collision Avoidance System
- Airstair Door Modification

Additional

- Cockpit: Class B TAWS, 12-inch multi-function display, full color moving map, Garmin SafeTaxi, Redundant FADEC, Electronic Checklist
- Crew Accessories: Jeppesen ChartView, Electronic Charts, Dual Sun Visors

2009 Phenom 100 - N983CA - 50000029



2009 Phenom 100 - N983CA - 5000029



2009 Phenom 100 - N983CA - 50000029



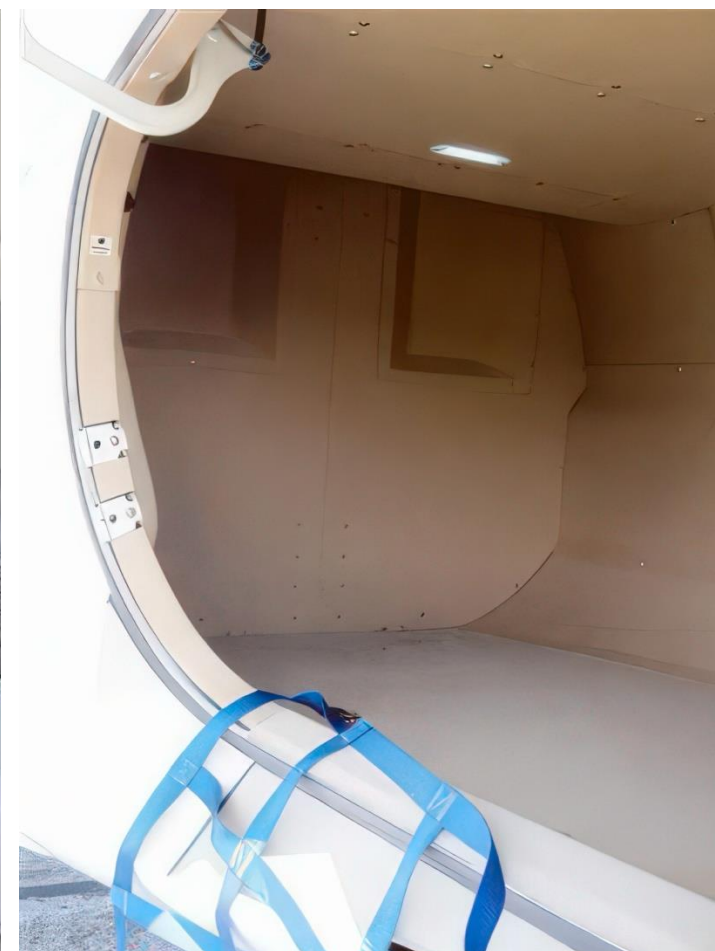
2009 Phenom 100 - N983CA - 5000029



2009 Phenom 100 - N983CA - 50000029



2009 Phenom 100 - N983CA - 50000029





Contact:
Brian Hammer
brian@flycitizenair.com
817-832-6442

Citizen Air
1402 Fairchild Airport Rd, Port Angeles, WA 98363
Training | Scenic Tours | Charter Management | Transactions | Consulting | Jets | Turboprop | Piston
91 | 91K | 135