

- 1. EU-deklarasjon**
- 2. Teknisk datablad**
- 3. Brukerhåndbok**
- 4. NorSmart Esslift Kontrollsystem  
Brukergrensesnitt Manual**
- 5. Mobil arbeidsplattform**
- 6. ReCoDrive**
- 7. Sikkerhetsinstruksjoner**
- 8. Lincoln Sentralisert smøringssystem**
- 9. Compressor**
- 10. Generator**
- 11. Brannslukningssystem**
- 12. Brannslukningsapparat**
- 13. Skjemaer**

*Oversettelse av den originale bruksanvisningen*

# EU-samsvarserklæring for maskiner

Produsent: Normet Oy  
Adresse: Ahmolantie 6  
FI-74510 IISALMI  
FINLAND

Navn og adresse til den person som har fullmakt til å utferdige den tekniske dokumentasjonen.

Normet Oy  
Design department  
Ahmolantie 6  
FI-74510 IISALMI  
FINLAND

Erklærer herved at bevegelig arbeidsplattform:

Esslift 1000 DH, #DQ144

- er i samsvar med bestemmelsene i Maskindirektiv (2006/42/EF), senere endringer og nasjonale implementerte lover,
- er i samsvar med bestemmelsene i direktivet om elektromagnetisk kompatibilitet (2014/30/EF),
- og erklærer videre at følgende (deler/paragrafer av) harmoniserte standarder har blitt anvendt:

EN ISO 12100:2010

EN 474-1:2007 + A5:2018

EN 1889-1:2011

EN 280:2013+A1:2015

- følgende (deler/paragrafer av) nasjonale tekniske standarder og spesifikasjoner har blitt anvendt

-

Teknisk kontrollorgan Inspecta Tarkastus Oy (NB0420)  
PL 1000  
FI-00581 HELSINKI  
FINLAND

Kontrollnummer 16034

Sted og dato: Iisalmi 26.4.2018



Underskrift: Timo Rask  
Direktør  
Normet Oy

*Original*



*Pictured machine may include options and additional equipment.*

### Features

The Esslift 1000 is built on a truck chassis, it is an easy-moveable and safe unit for service and assembly work and it is intended for working at construction sites. Typical applications are fan installations, ventilation ducting, electrification works and piping for air and water services. The boom mounted work platform can be turned sideways, raised and lowered, moved forward and backward, hydraulically levelled and extended telescopically.

The platform can be lowered to the ground for loading and unloading of goods, has a load capacity of 1000 kg and reaches 13 meters from ground level.

All boom operations are radio controlled and the vehicle is equipped with remote control drive for convenient movements of the carrier.

The Esslift 1000 is CE approved and approved for road traffic in Scandinavian countries. It can be fitted with different accessories to meet customer needs. The Esslift 1000 shall not be used without a protective roof when-ever there's a risk of falling objects at a worksite.

Normet reserves the right to change this specification without further notice.

### Technical specification

#### CARRIER

MB Arocs 2636K  
Diesel engine OM470, R6, 10.7L, 265kW, 1800Nm, EURO 6  
Mid-long cabin 2.3m  
Total capacity 28000kg (9-ton front axle)  
Diesel tank capacity 290 litres  
Aluminum mud guards on rear axles  
4 LED working lights on chassis

#### LIFTING BOOM WITH WORK PLATFORM

Max lifting height (from ground) 11000 mm  
Work platform size in working position 4000 x 2500 mm  
Work platform size in transport position 2600 x 2500 mm  
Boom turning angle 2x 105°  
Work platform turning angle 2x 90°  
Lifting angle -20° to +65°, platform can be placed on ground for loading  
Boom sliding table travel 4000 mm  
Max load in work platform 1000 kg = 680 kg + 4 persons centrally located  
4 LED working lights on platform

#### SUPPORT LEGS

Support legs with telescoping in front  
Support legs with telescoping in rear

#### REMOTE CONTROL

Boom movements and support legs controlled by radio control  
Vehicle equipped with ReCo drive for movement through radio control

#### HYDRAULIC SYSTEM

Tank capacity 250 Litres

- Return oil filtration 10 µm
- Visual indication for oil level and alarm for high temperature (80°C) and low oil level

One 95 cm<sup>3</sup> variable displacement pump for boom and generator  
One 110 cm<sup>3</sup> variable displacement pump for compressor  
Emergency pump (24VDC) for lowering the boom  
Filling pump (24VDC) for hydraulic oil

#### GREASING SYSTEM

Lincoln central lubrication system for boom and sliding table

#### FIRE SUPPRESSION SYSTEM

Fogmaker

#### OTHER

Standard symbol labels  
Two 6 kg hand held fire extinguishers: one on the chassis and one on the platform

### Optional equipment

#### CARRIER

Truck supplied by customer

### Additional equipment

#### LIFTING BOOM WITH WORK PLATFORM

Sockets/outlets 230V for electric power in work platform  
Outlet for compressed air in work platform  
FOPS safety roof with hydraulic lift and slide

- Max load with safety roof 650 kg = 330 kg + 4 persons centrally located

#### GENERATOR

Hydraulic driven generator

- Dynaset HG 10 kVA, 400V-33
- Dynaset HG 20 kVA, 400V

#### COMPRESSOR

Dynaset HKL 5000/8-135, rotary vane

- Hydraulic driven

### LTC services

#### RECOMMENDED SPARE PARTS FOR EARLY LIFE

**Spare parts package: A complete package to make sure your machine runs with optimal uptime up to 1000 operation hours\*.**

Includes periodical maintenance parts and most critical spare parts related to e.g.:

- Engine (e.g. filters, belts)
- Chassis (e.g. wiper blades, throttle pedal connector)
- Hydraulics (e.g. filters)
- Electrics (e.g. sensors, work lights, solenoid coils, contactors)
- Boom (e.g. sliding parts, bearings, cylinders, seals, pins)
- Compressor, if applicable (e.g. filters)

\*) In challenging operating environment 1000h of usage may not be reached with this spare parts package.

#### EXTENDED WARRANTY

Extended warranty extends the standard warranty period (12 months or 2000 usage hours) up to total 24 months or 3000 usage hours, whichever is reached first.

#### ELECTRONIC MANUALS ON THE WEB

LinkOne electronic spare parts and instruction manuals

#### TRAINING AND EXPERTISE SERVICES

Available before and at the equipment delivery - and during the whole equipment life-time!

##### Product training:

Operation and Maintenance  
Automation - NorSmart  
Foundation of electrics, hydraulics and mechanics  
Trouble-shooting

##### Process & operator improvement audit for:

Concrete spraying  
Charging  
Scaling

##### Audit services to improve:

Performance, availability, maintenance & repair efficiency, safety, quality, environmental aspects

#### SERVICE CONTRACTS FOR

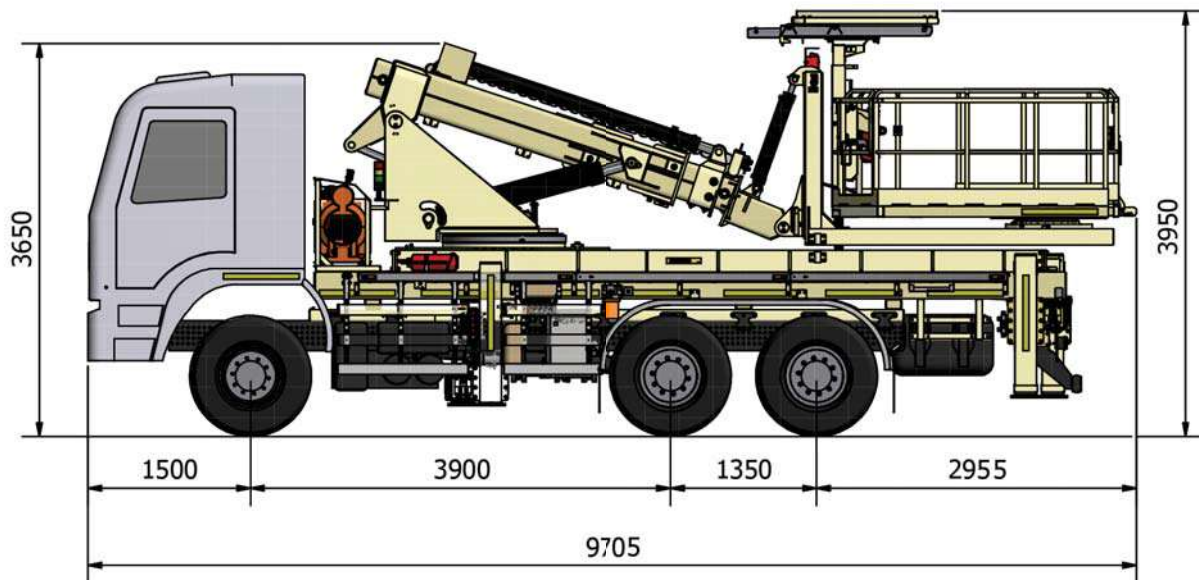
Spare parts supply  
Scheduled inspection  
Supervision  
Scheduled maintenance  
Preventive maintenance

#### EQUIPMENT HAND-OVER SERVICES

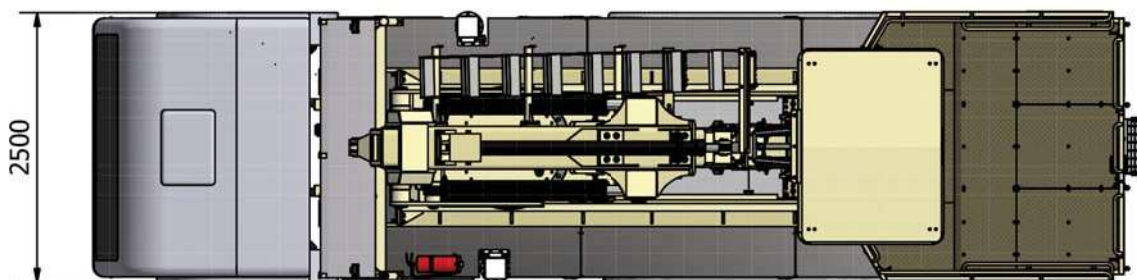
	Start-up training	Commissioning
<b>1. Operator training</b>		
<b>1.1 Classroom training</b>		No classroom training included in commissioning
General introduction and operation of machine	Comprehensive	
Safety instructions	Comprehensive	
Use of manuals	Comprehensive	
Technical introduction of equipment	Comprehensive	
Hands-on service and pre-operation checks	Comprehensive	
Controls and driving (starting, driving, stopping, parking)	Comprehensive	
Work method	Comprehensive	
<b>1.2 Practical training</b>		
Pre-operation checks	Comprehensive	Basic
Driving, starting, stopping, parking	Comprehensive	Basic
Preparing the machine for specific operation conditions	Comprehensive	Not covered
Operation	Comprehensive	Basic
Washing the machine	Comprehensive	Basic
Troubleshooting	Comprehensive	Basic
<b>2. Maintenance and repair training</b>		
General operation of machines	Comprehensive	Basic
Symbols of drawings and codes	Comprehensive	Not covered
Understanding hydraulic and electric schematics	Comprehensive	Basic
Control systems	Comprehensive	Basic
Function of main components (depending on equipment)	Comprehensive	Basic
Locations of components in the machine	Comprehensive	Not covered
Periodical maintenance	Comprehensive	Basic
Troubleshooting	Comprehensive	Not covered
Use of manuals	Comprehensive	Basic
Connection of hydraulic and electrical equipment	Comprehensive	Not covered

Normet reserves the right to change this specification without further notice.

### Dimensions



**SIDE VIEW**  
with safety roof



**TOP VIEW**

#### DIMENSIONS

Length	9705 mm
Width	2500 mm
Height	3650 (3950) mm
Wheel base	3900/1350 mm
Ground clearance	250 mm

#### TURNING RADIUS

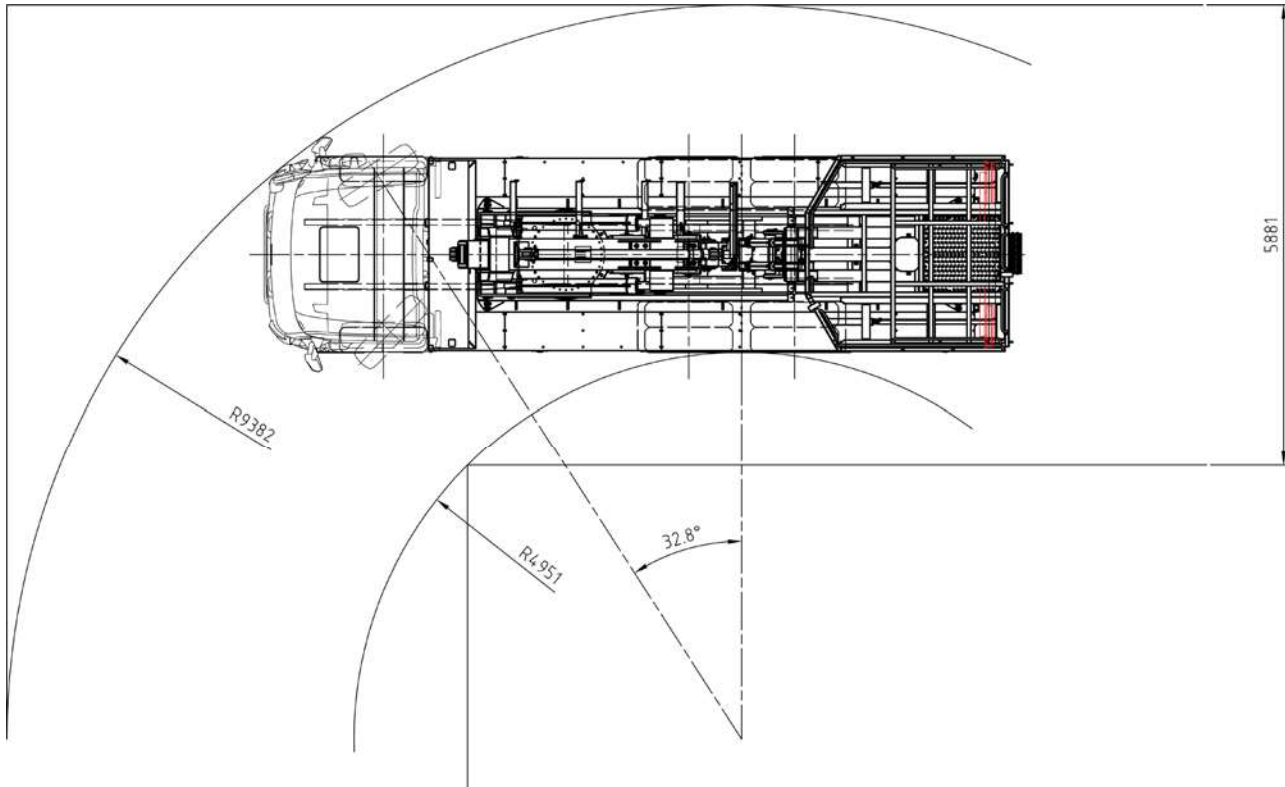
Outer	9328 mm
Inner	4951 mm

#### WEIGHT

Total	24 000 kg
Front axle load	8 300 kg
Rear bogie load	15 700 kg

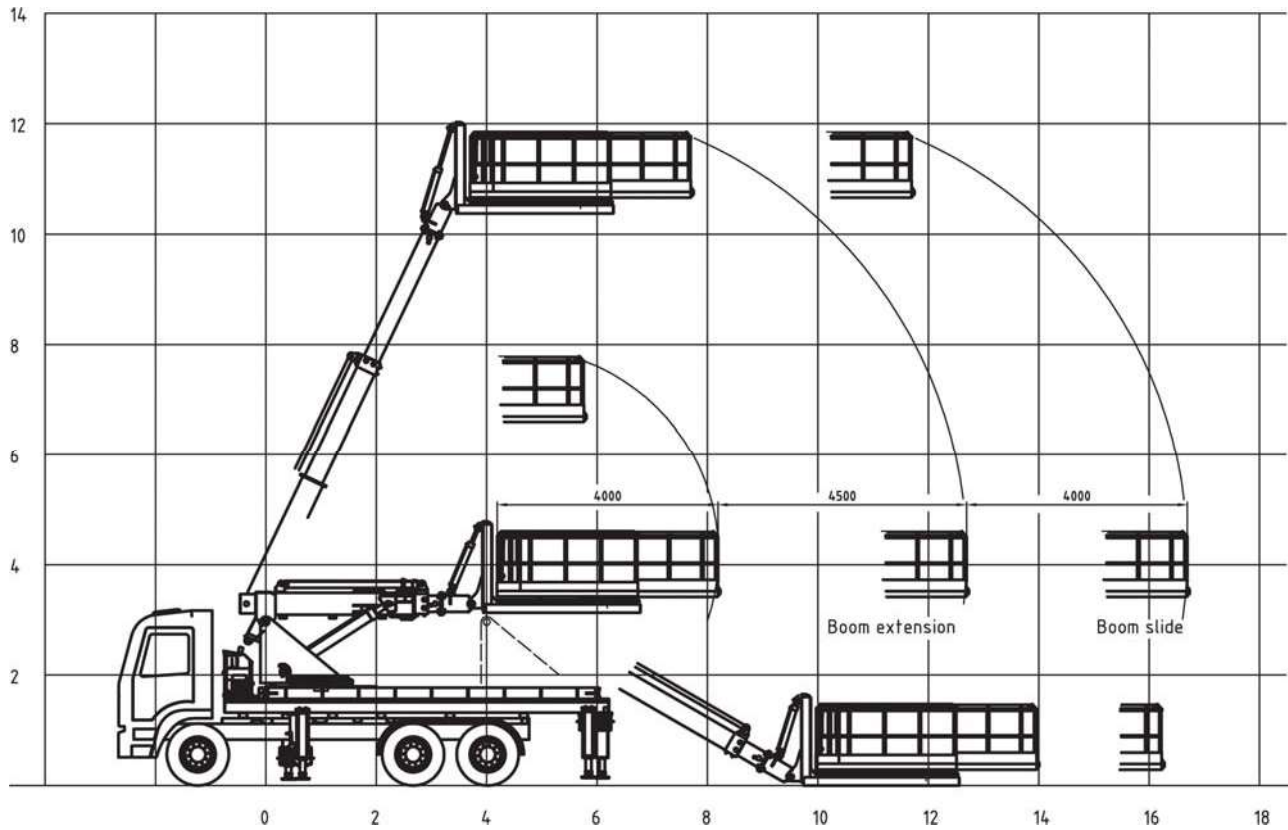
Normet reserves the right to change this specification without further notice.

### Dimensions



TURNING RADIUS

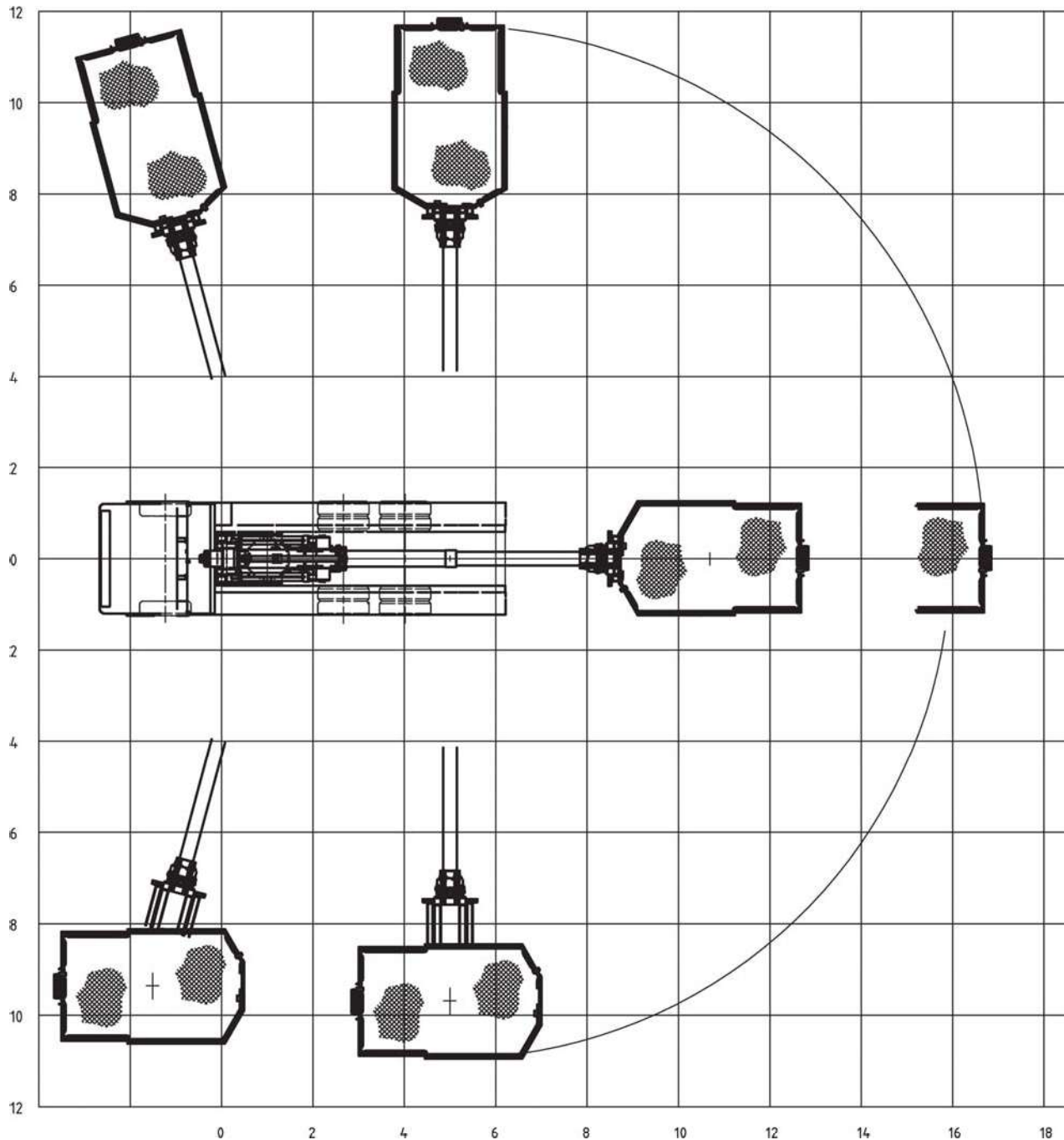
### Dimensions



### BOOM REACH

Normet reserves the right to change this specification without further notice.

### Dimensions



### BOOM REACH

Normet reserves the right to change this specification without further notice.