



Features

The A-Lift 1000 is built on a truck chassis, it is an easy-moveable and safe unit for service and assembly work and it is intended for working at construction sites.

Typical applications are fan installations, ventilation ducting, electrification works and piping for air and water services. The boom mounted work platform can be turned sideways, raised and lowered, moved forward and backward, hydraulically levelled and extended telescopically.

The platform can be lowered to the ground for loading and unloading of goods, has a load capacity of 1000 kg and reaches 13 meters from ground level.

All boom operations are radio controlled and the vehicle is equipped with remote control drive for convenient movements of the carrier. The A-lift 1000 is CE approved and approved for road traffic in Scandinavian countries. It can be fitted with different accessories to meet customer needs. The A-lift 1000 shall not be used without a protective roof when-ever there's a risk of falling objects at a worksite.

Technical Spesification

- CARRIER MB AROCS 2642K Diesel engine OM470, R6, 10.7L, 265kW, 1800Nm, EURO 6 Mid-long cabin, 2.3m Wheel base 4200 (1350)
- Total capacity 28000kg (9-ton front axle)
- Diesel tank capacity 290 litres
- LIFTING BOOM WITH WORK PLATFORM Max lifting height (from ground) 11000 mm Work platform size in working position 4000 x 2500 mm
- Work platform size in transport position 2600 x 2500 mm

Agder reserves the right to change this specification without further notice

Agder Tunnelservice AS, Svegeskogen 11, 4400 Flekkefjord
Tel +47 971 80 525 - www.agder-gruppen.no

- Boom turning angle 2x 105° Work platform turning angle 2x 90° Lifting angle -20° to +65°, platform can be placed on ground for loading
- Boom sliding table travel 4000 mm Max load in work platform 1000 kg centrally located (incl. persons)
- Sockets for electric power and compressed air in work platform Quick connect device for convenient change of platforms
- SUPPORT LEGS Support legs with telescoping in front Support legs with telescoping in rear
- REMOTE CONTROL Boom movements made by radio control Vehicle equipped with ReCo drive for movement through radio control
- GENERATOR Dynaset HG 10 kVA, 400V-33 Hydraulic driven
- COMPRESSOR Dynaset HKL 5000/8-135, rotary vane Hydraulic driven
- HYDRAULIC SYSTEM Tank capacity 250 Litres One variable displacement pump for boom movements One fixed displacement pump for compressor and generator
- GREASING SYSTEM Central lubrication system

Additional Equipment

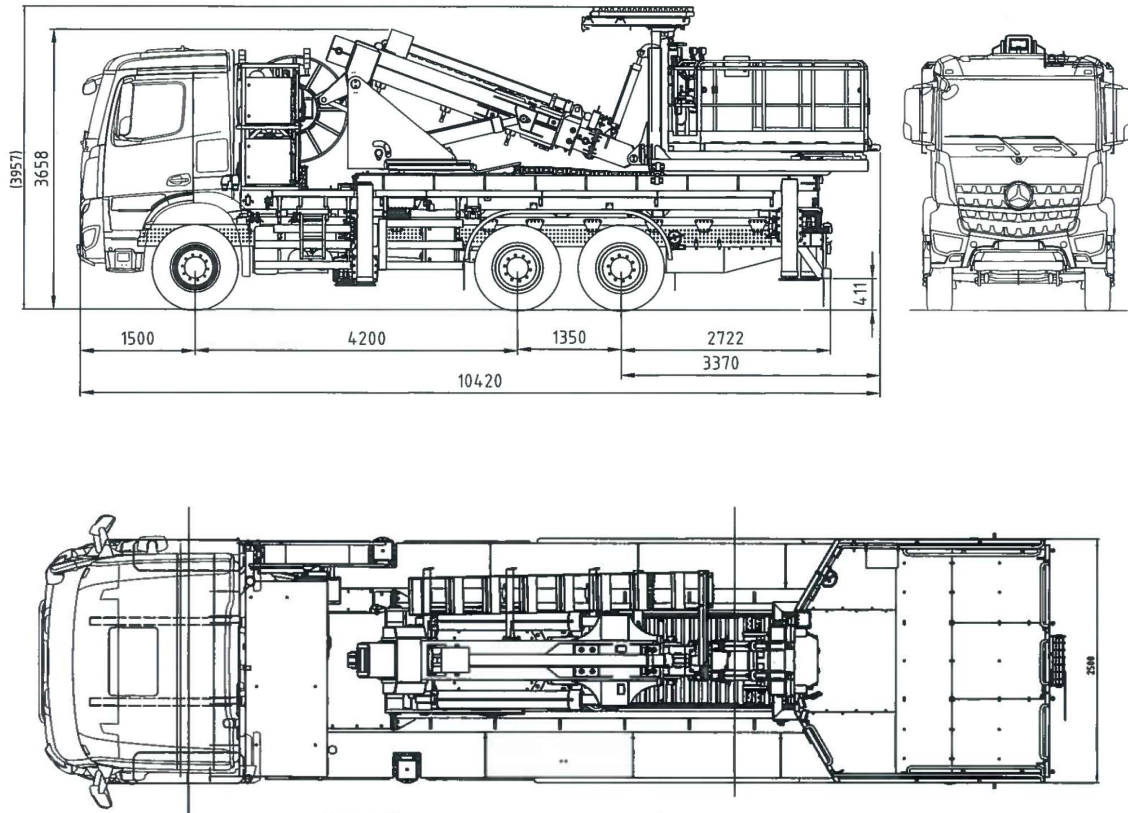
- PLATFORMS Scaling platform (quick connection system)
- Drilling platform (quick connection system)
- Membrane roll platform (quick connection system) Agder

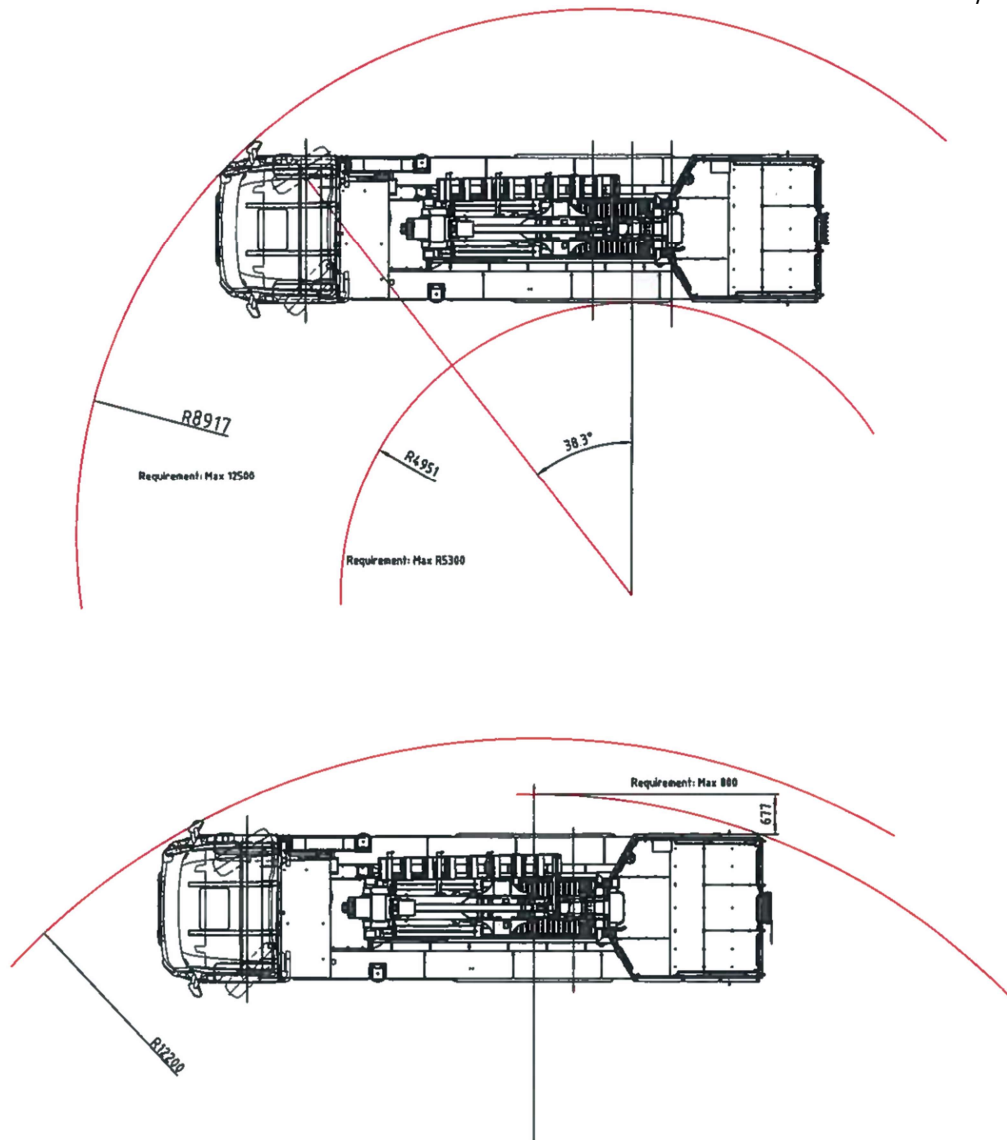
Dimensions

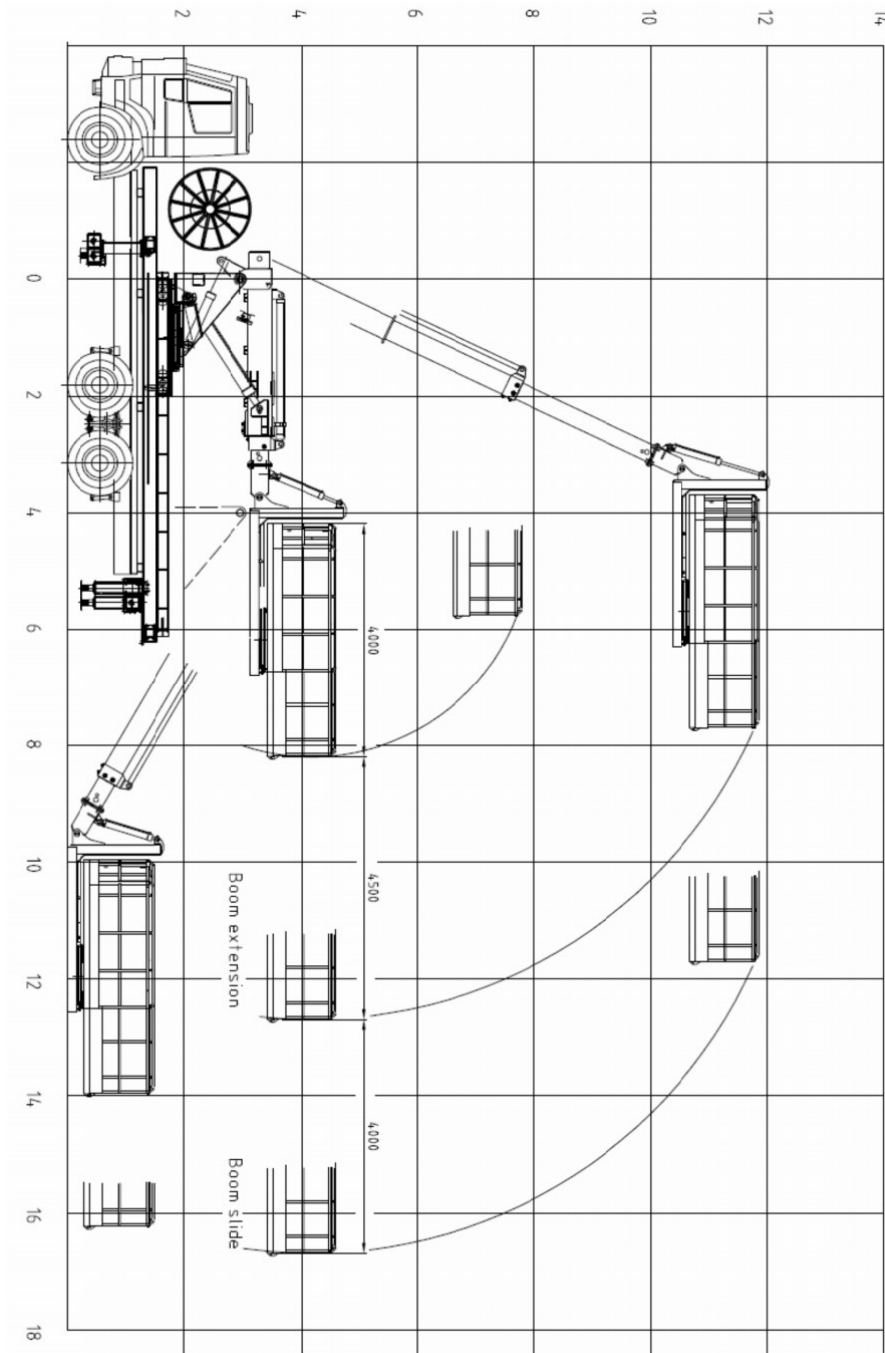
- DIMENSIONS Length 9650 mm
- Width 2500 mm
- Height 3580 mm
- Wheel base 3900/1350 mm
- Ground clearance as shown 250 mm
- TURNING RADIUS Outer 9328 mm Inner 4951 mm
- WEIGHT Total 24 000 kg
- Front axle load 8 300 kg
- Rear boggie load 15 700 kg

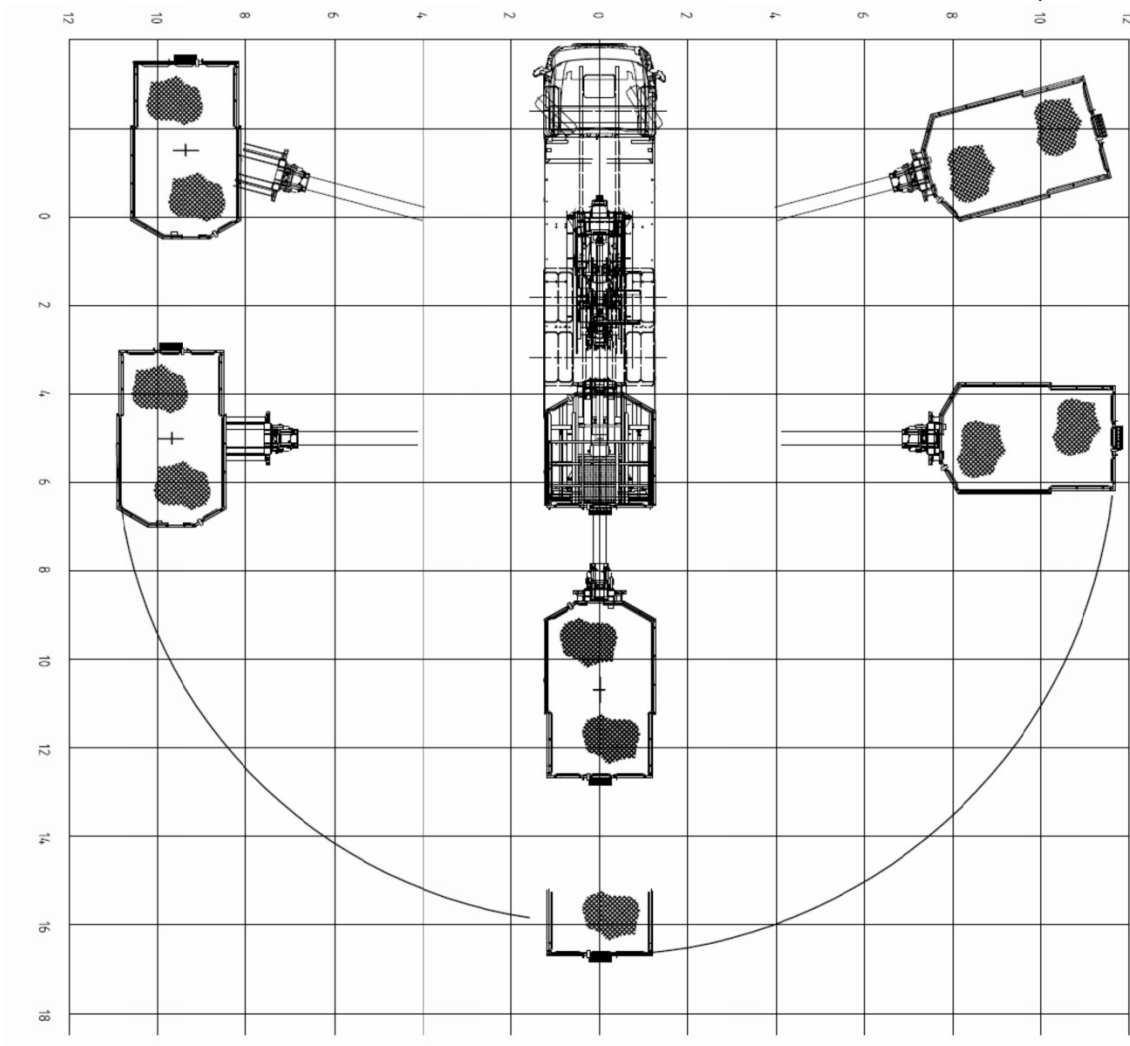
Technical info 1000V Application

- 1000V/50HZ
- 55KW/1500RPM
- Transformator 1000/400/230 20KVA
- 200 Meter Cabel lenght









Agder reserves the right to change this specification without further notice

Agder Tunnelservice AS, Svegeskogen 11, 4400 Flekkefjord
 Tel +47 971 80 525 - www.agder-gruppen.no