

# Actionable Intelligence to better prepare for and respond to Cyclones (Hurricanes, Typhoons) worldwide



## Hazard Type Info

DisasterAWARE's cyclone hazard type provides users real-time **global** monitoring, forecasts, and situational intelligence to better understand and respond to impending cyclones, such as **Storm Surge** modeling and zones, **Still Water Storm Surges**, forecasted path models, 20+ other associated **mapping layers** (rainfall, winds, etc), and 30-years of **historical data**. Know what assets and employees may be directly impacted, as well as the general exposure within the hazard zone (population, households, economic value).



## Focused Alerting

View and keep tabs on global active and upcoming Cyclone activity or define SmartAlert areas to receive Smart Alerts only for the places you care about.

**Enhance the monitoring and protection of specific assets** (e.g. buildings, team and resource locations)



## Hazard Severity & Data Source

**Severities are based on intensity and proximity to land.**

Sources: National Hurricane Center (NHC), Central Pacific Hurricane Center (CPHC), Joint Typhoon Warning Center (JTWC)



### Warning

Tropical storm conditions or stronger are expected to impact land within 36 hours (39 mph, 63 km/h, 34 kt or stronger winds). Take appropriate lifesaving action.



### Watch

Tropical storm conditions or stronger are expected to impact land within 48 hours (39 mph, 63 km/h, 34 kt or stronger winds). Finalize necessary preparations now



### Advisory

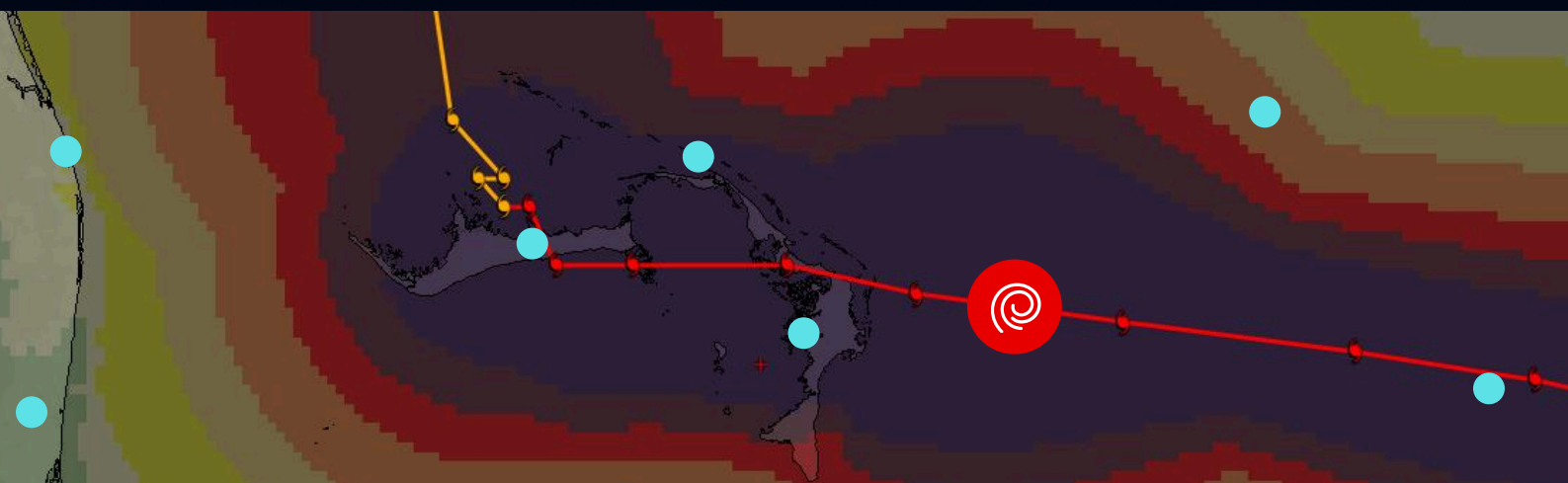
Tropical storm conditions or stronger are expected to impact land within 5 days (39 mph, 63 km/h, 34 kt or stronger winds). Review your disaster plan and supply checklist



### Information

Tropical storm conditions or stronger are not expected, or there is no current threat to land within the next 5 days (63 km/h, 39 mph, 34 kt or stronger winds).

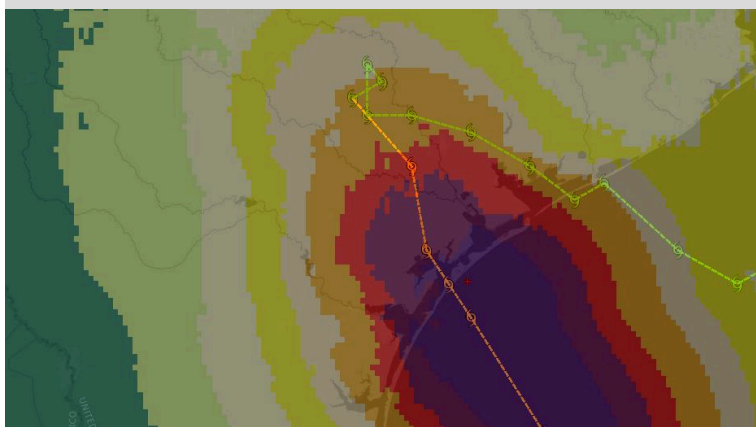
## Enhanced Monitoring and Protection of Assets



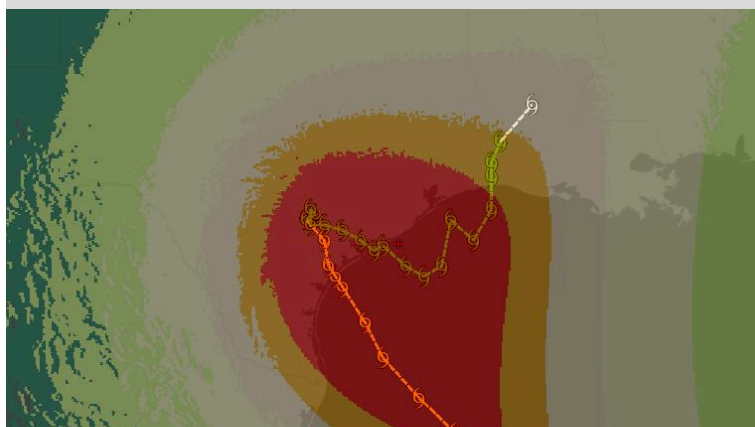
# Easily assess the event/ impact and view related GIS layers



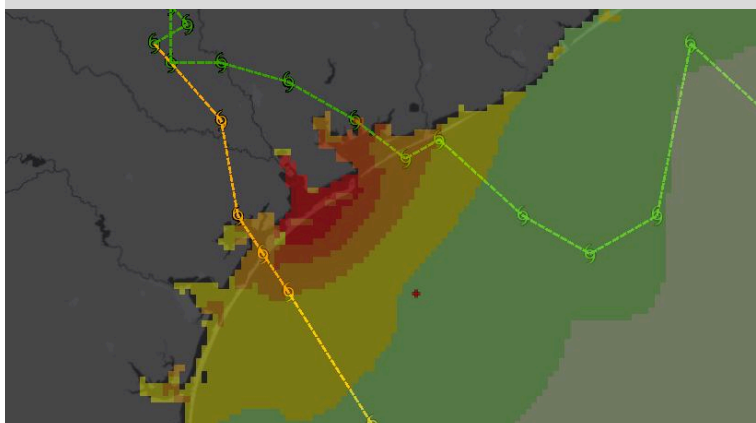
**Tropical Cyclone Winds (Hazard Tooltip)**



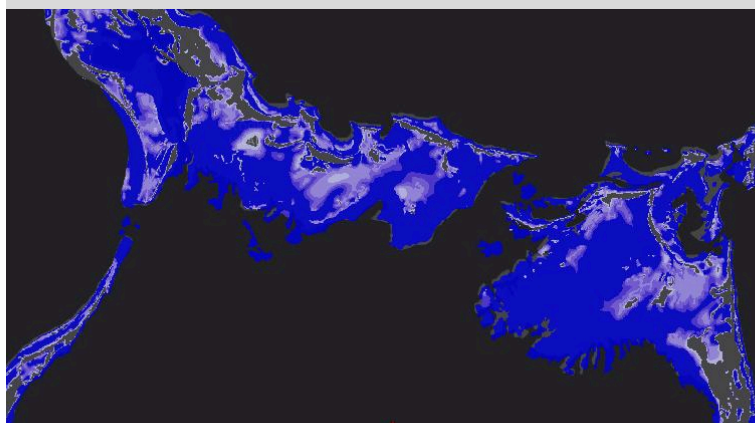
**Estimated Rainfall (Hazard Tooltip)**



**Still Water Storm Surge (Hazard Tooltip)**



**Storm Surge Zones (Layers > Regional Data)**



## Quickly answers:

- What happened?
- How bad was it?
- Where was it?
- What actions do I need to take?



### Event Brief

When widespread or greater wind damage is possible.  
(See example below.)

