

Predictive Intelligence and Early Warning



NASA Landslide Partnership

NASA and DisasterAWARE-PDC have joined forces to enhance global awareness and alerting for landslide hazards across the world. The integration of NASA's LHASA model into DisasterAWARE enables swift identification and response to landslides worldwide, including automated exposure modeling by DisasterAWARE-PDC.



Focused Alerting

View and keep tabs on global active & predicted Landslide activity or define SmartAlert areas to receive Smart Alerts only for the places you care about.

Enhance the monitoring and protection of specific assets
(e.g. buildings, team and resource locations)



Hazard Severity & Data Source

Landslides hazards were developed in partnership with NASA and are predictive

Sources: PDC-Global, NASA's Global Landslide Hazard Assessment model for Situational Awareness (LHASA)



Warning

Conditions are right for a landslide to occur and may impact populations and infrastructure. There is a high likelihood that action will need to be taken.



Watch

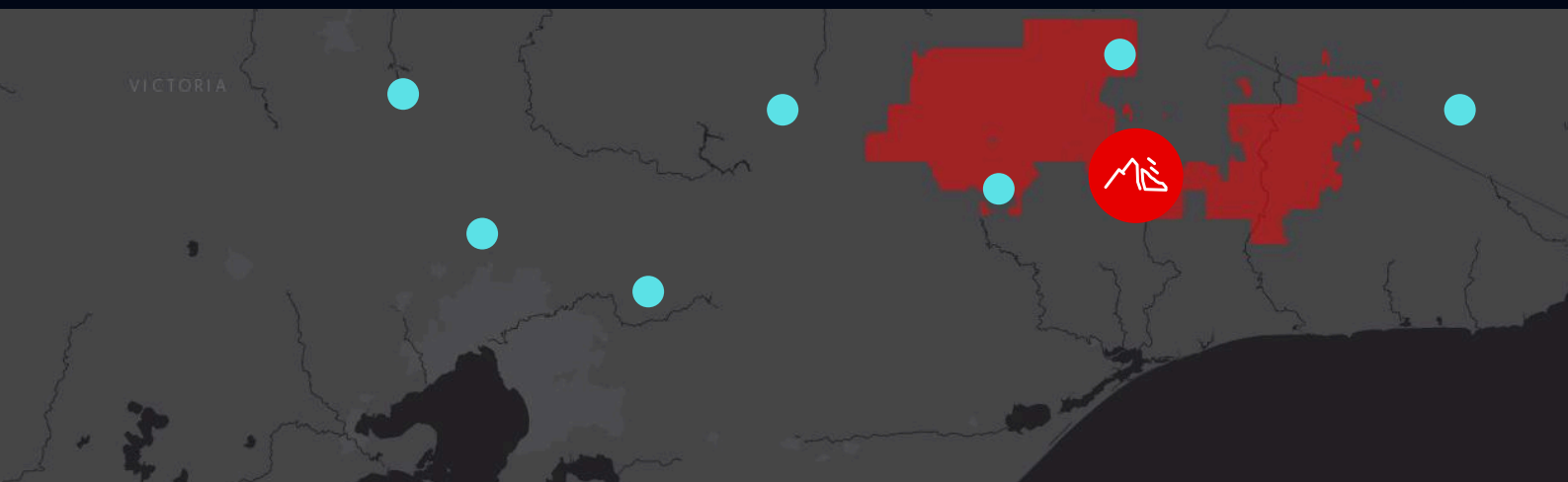
Conditions are favorable for a landslide to occur and may impact populations and infrastructure. Monitor closely and be prepared to act if necessary.



Information

A significant landslide has recently occurred with severe impacts on population or infrastructure. Agencies are responding. No additional threat is anticipated.

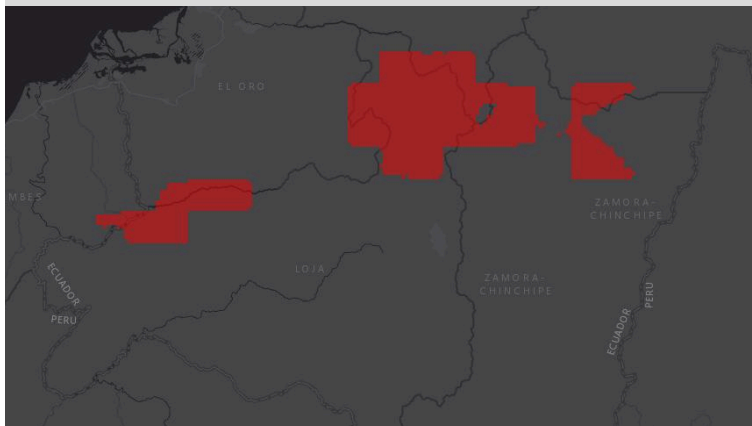
Enhanced Monitoring and Protection of Assets



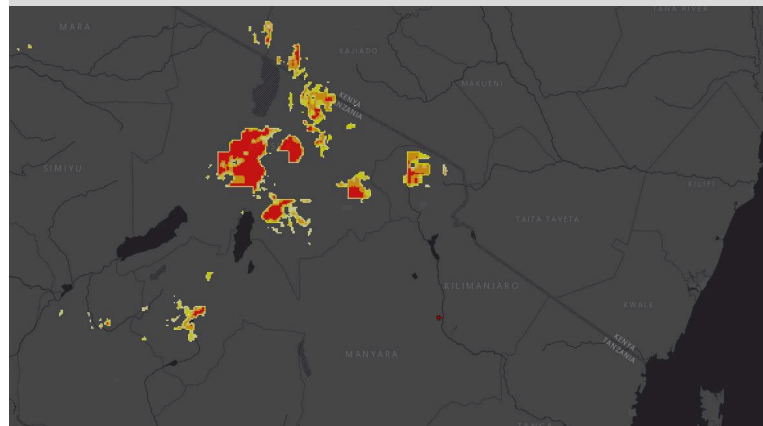
Quickly assess the event/impact and view related GIS layers



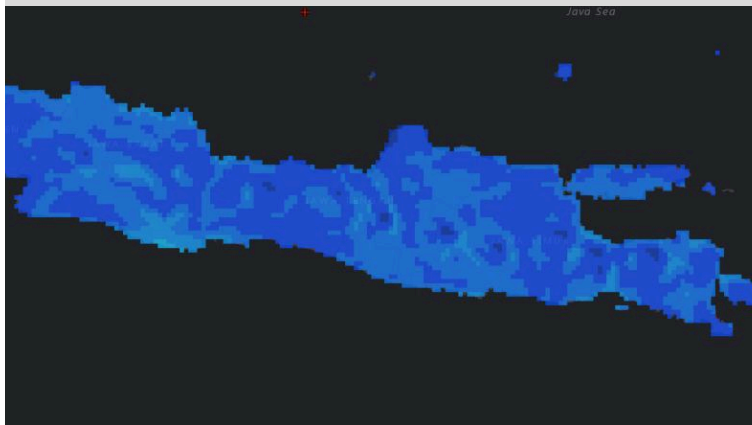
Landslide Incidents (Hazard Tooltip)



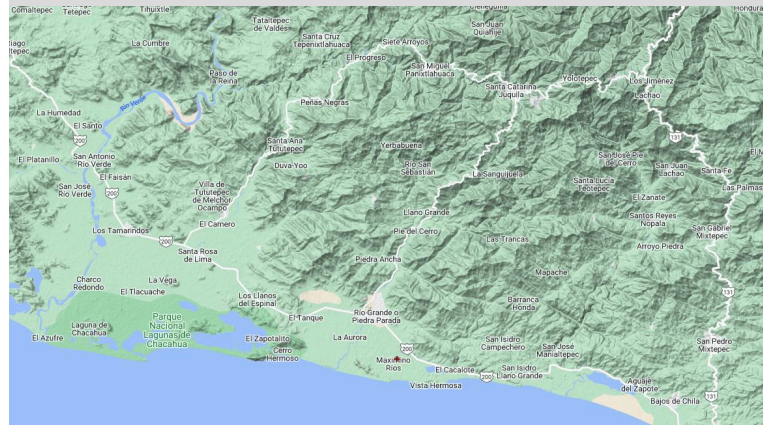
Global Landslide Probabilities (Hazards and Events)



Precipitation Forecast (Observations & Forecasts)



Terrain (Layers > Backgrounds Tab)



Quickly answers:

- What happened?
- How bad was it?
- Where was it?
- What actions do I need to take?



Event Brief

Landslide hazard watch or warning.
(See example below.)

