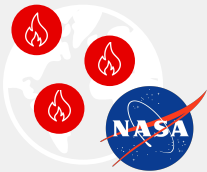


Monitoring, Predicting, and Providing Actionable Intelligence to better prepare for and respond to Wildfires



Global Wildfire Hazard Model

Proprietary global wildfire hazard model leverages NASA's Visible Infrared Imaging Radiometer Suite (VIIRS) data to automatically detect potential large and intense fires. Wildfire alerts are issued through DisasterAWARE, including automated wildfire exposure reports via Event Brief. Also Include Fire **Radiative Power (FRP)**, **wind speeds & forecasts**, **fire impact & spread**, 25+ years of **historical data**, and more.



Focused Alerting

View and keep tabs on global active & predicted Wildfire activity or define Smart Alerts areas to receive Smart Alerts only for the places you care about.

Enhance the monitoring and protection of specific assets
(e.g. buildings, team and resource locations)



Hazard Severity & Data Source

PDC's proprietary global wildfire hazard model detects large and intense fires, and assigns severity based on intensity and proximity H to urban areas. Higher intensity and threat = higher severity.



Warning

Large/intense wildfire detected near urban or developed areas. Immediate attention and action may be required.



Watch

Large/intense wildfire detected. Watch closely as conditions may change. Be prepared to act if necessary.



Advisory

Large/intense wildfire detected. Be advised and monitor the situation for updates. Prepare for potential changes.



Information

Large/intense fire detected. No immediate threat. Stay informed for updates and additional information.

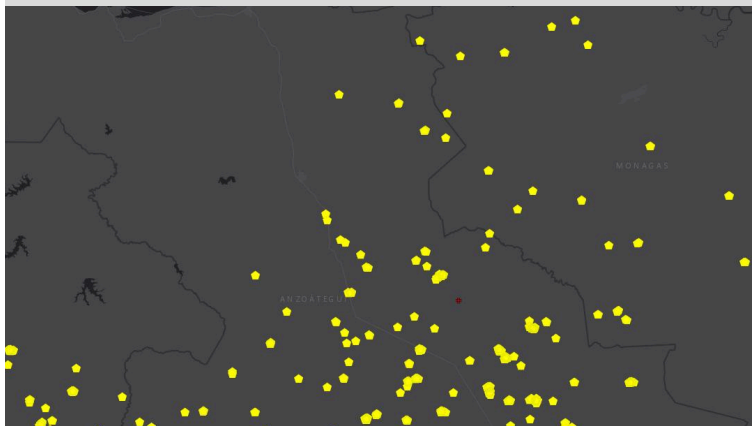
Enhanced Monitoring and Protection of Assets



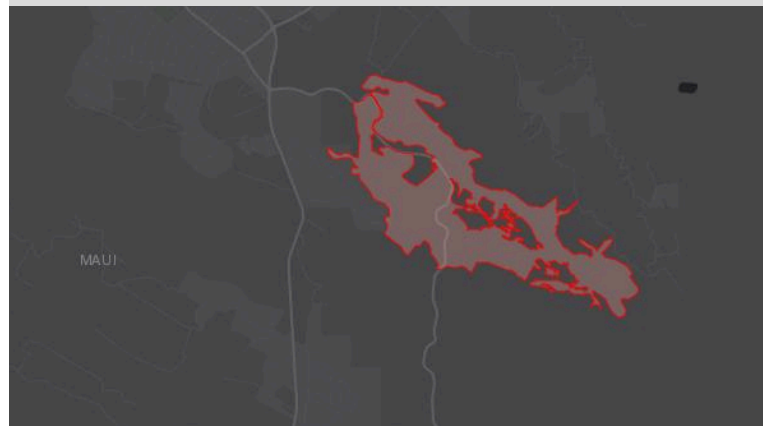
Quickly assess the event/ impact and view related GIS layers



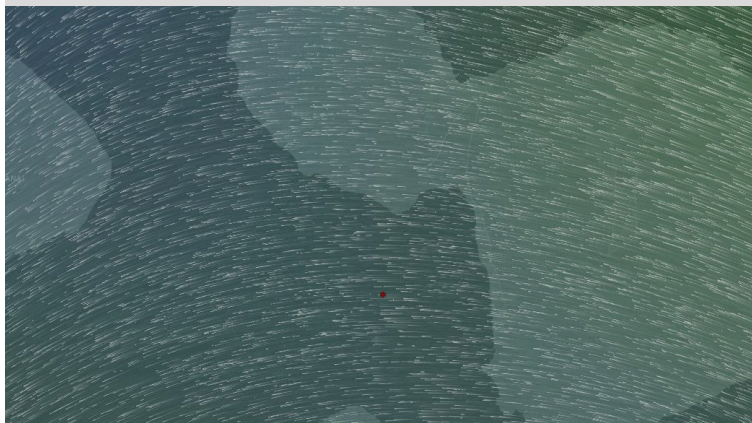
Wildfire Locations - Hotspots (Hazard Tooltip)



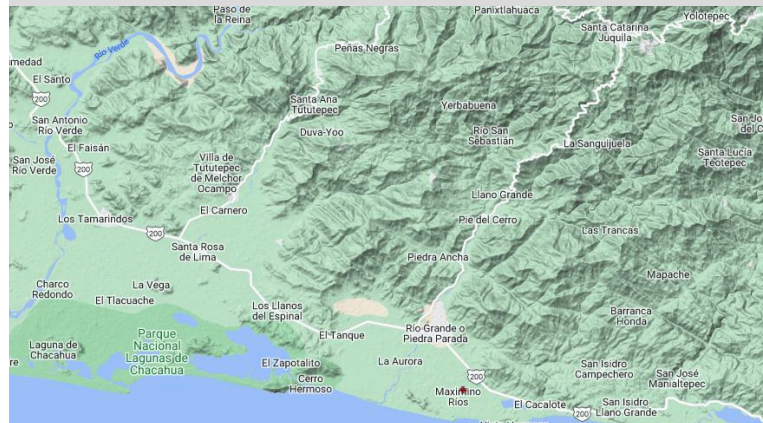
Current Wildfire Perimeters - USA (Hazard Tooltip)



Wind - Surface Velocity & Forecast (Hazard Tooltip)



Terrain (Layers > Backgrounds Tab)



Quickly answers:

- **What** happened?
- **How bad** was it?
- **Where** was it?
- **What actions** do I need to take?



Event Brief

Exposure to observed hotspots
or the wildfire perimeter.
(See example below.)

