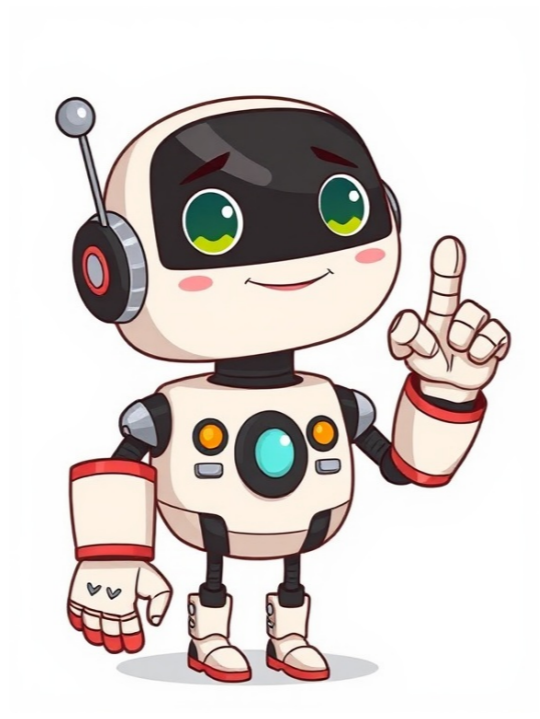


I'm not a bot





























LedEdit 2014 is a free software utility that facilitates the configuration of T-1000S SD card RGB LED pixel controllers. ===== Lededit 2014 is freeware and has ben downloaded more than 19 thousand times. Its main goal is to acces the t1000s and controll it. LEDEdit 2014 is a comprehensive LED programming software that allows users to maximize the potential of their LED controllers, regardless of experience level. With its user-friendly interface and powerful tools, users can create mesmerizing lighting effects for any project. This free version of LEDEdit 2014 provides essential features and stable performance, making it perfect for basic LED programming needs and simple lighting projects. The software supports a wide range of LED controllers, including WS2811, WS2812, TM1803, and others, ensuring compatibility with various devices. The program's effects generator allows users to create custom lighting effects using a variety of built-in effects, such as color fades and chases. Additionally, users can import custom images and animations to create unique lighting effects for their LED projects. LEDEdit 2014 is designed for both beginners and experts, offering an intuitive interface and customizable settings to suit individual needs. The software's free version provides real-time preview and multiple output options, making it easy to test and fine-tune lighting effects. Whether you're a hobbyist, professional, or DIY enthusiast, LEDEdit 2014 is the perfect tool for creating custom lighting effects for your LED projects. With its powerful tools and user-friendly design, users can bring their ideas to life and create stunning light shows that will impress friends and family. The all-in-one pixel controller software allows users to easily customize their LED projects with a variety of video effects. The program automatically recognizes connected devices and enables users to set up and preview recordings, as well as edit existing ones. LEDEdit 2014 v2.4 is now available for download at the official website, and it's free to download in the software section. The most popular version is 1.0, compatible with Windows XP, 7, 8, and 10 operating systems. To start using the software, simply download the LEDEdit 2014 installer, run the setup file, and follow the on-screen instructions. After installation, users can access a wide range of customization options, including over 7000 files in various formats such as SWF, TOL, AVI, MP4, and GIF. The Pixel LED Effects pack, containing 1200 animations and effects, is also available for download and can be easily integrated into the software using the "Open Video" button. Users can preview and record custom effects, making it easy to add dynamic lighting to their space. The tutorial provides a step-by-step guide on how to use the Pixel LED Effects pack with LedEdit 2014, ensuring a seamless experience for users.