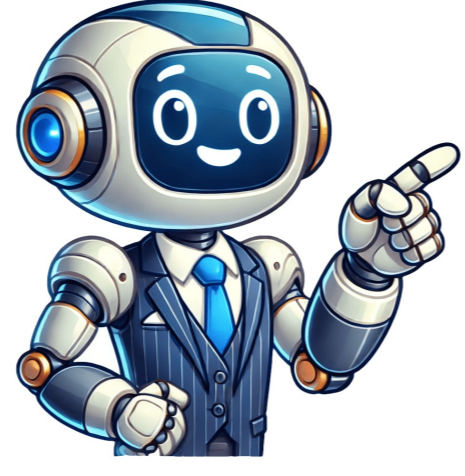


Continue



Tv guide wheel of fortune

Game Show Network, also known as GSN, is a cable channel launched in 1994. Initially focusing on airing game shows like Wheel of Fortune, the network started by showing reruns from various seasons of the show. In its early years, GSN's rotation included Seasons 1, 5, and 10, with Season 10 being favored. The lineup changed over time, featuring different seasons, including Season 2 in 1998 and Season 14 in 2000. From 2000 to 2004, the network experimented with airing different seasons, such as Season 7 in 2000 and Season 6 in 2001. In 2004, GSN began omitting certain segments from Wheel reruns, including sweepstakes rules and contestant plugs, which was met with disapproval from game show fans. The network also experienced technical issues like time-compression and audio problems during these reruns. Wheel's absence from the channel lasted until 2007, when it made a brief return for tributes to Merv Griffin and later in 2010. Featured on GSN's "Viewers' Choice" marathon, a September 12, 1996 episode from Season 14 was aired. Later, Wheel returned to GSN's schedule with a lease of Season 12, which ran in its entirety for two cycles and part of a third, concluding with #S-2280 on March 24, 1995. Following this, limited leases of other shows like Jeopardy! and The \$100,000 Pyramid were aired. In contrast to previous reruns, the Season 12 repeats included newly-created closed captioning tracks provided by Captionmax. After a hiatus, Wheel returned with a six-hour marathon featuring episodes from Seasons 23 and 24 on November 26, 2010. In October 2016, GSN brought back Wheel with Season 31 episodes airing weekdays at 11:00 AM Eastern, replacing Lingo. The episodes were presented in letterbox format without SPIN ID drawings, and closed captioning was retained from the original syndicated airings. However, six episodes from Season 31 (#S-5386 through S-5391) were never aired by GSN for unknown reasons. To replace these missing episodes, GSN aired the final six episodes of Season 30 (#S-5845 through S-5850), which first appeared on the network in January 2017 and concluded in July 2019. Wheel of Fortune episodes were often modified to avoid airing during certain holidays and instead scheduled for reruns around them. GSN would remove references to sweepstakes, alter episode titles, and cut away from the show before revealing final scores. In November 2016, the weekday schedule expanded to two hours, but was later reduced to two airings per day in December 2017. Wheel returned to Game Show Network on weeknights with two episodes at 9:00 and 9:30 PM Eastern, replacing Switch and Split Second. This lease includes a selection of various episodes from several seasons, totaling 222 episodes from Seasons 34-37. The earliest episode is #S-6514 (December 29, 2016), while the latest is #S-7185 (April 24, 2020). Most episodes have been available on Pluto TV since August 2022, except for one, which was previously available on Netflix from February-August 2021. The lease started with Season 36 and continued chronologically from there. New episodes were added to Pluto after the channel's launch, but not included in Game Show Network's rotation. Game Show Network uses the same prints as streaming platforms, with plugs edited out and the Retro Bonus Round removed in most episodes. Closed captioning has also been modified for stylistic standards. Some episodes air in their original interlaced form, while others are deinterlaced. Two additional airings were added on weekdays at 2:00 and 2:30 PM, replacing Blank Slate and America Says. The lease was changed to a new selection of 200 episodes ranging from Seasons 30-38 in January 2025. The 38th season of the show includes episodes that were previously available only on Pluto TV or not at all, as well as new ones added after the channel's launch. The earliest episode is #S-5666 from October 1, 2012, and the latest one is #S-7337 from February 9, 2021. The airings did not start from the beginning of a season or the chronological order, with some episodes starting at 2:00 PM with #S-5712 (December 4, 2012), and the 9:00 PM hour began with #S-6443 on September 21, 2016. Seasons 31, 32, and 33 aired in January, February, and March respectively. Season 38 premiered in the nighttime hour on February 20. The week of April 27-May 1, 2020, from Season 37 is listed as May 29-June 2, 2017, but actually airs before that period. In episodes from the 2025 lease, the SPIN ID drawings are removed. Some sweepstakes references remain with a black bar, and T-Mobile ads on Tuesday episodes are left intact. The Retro Bonus Round remains fully intact in most episodes, but some commercials are skipped or modified for T-Mobile ads. GSN Acquires Wheel, Adjusts Logo and Spiel Initially, GSN replaced King World logo with Columbia-TriStar Television logo. The network retained daytime episodes except for three. Wheel 2000 aired on GSN, along with other Sony-owned games. 12 Games of Christmas featured Betty White as host in a special episode. GSN aired several Wheel and Jeopardy! episodes to honor Merv Griffin following his death. These changes occurred over the years as part of the network's programming updates. ****GSN's Airings of Wheel**** The Game Show Network (GSN) has aired various episodes and marathons of Wheel over the years, including some unique and interesting events. Here are some highlights: * In 1997, GSN debuted an electronic puzzle board and green/gold W-H-E-E-L envelope holder. * Alex Trebek and Lesly Sajak guest-hosted while Pat and Vanna played for charity in April 1997. * On November 10, 2003, GSN aired a ceremonial 4,000th episode/clip show. * In 2010, GSN aired six hours of Wheel on Black Friday, consisting of two episodes from Season 23 and ten from Season 24. ****Seasons and Episodes**** Here are some notable episodes and seasons: * Season 12 reruns: GSN re-aired these shows with closed captioning. * Season 24: GSN aired these episodes in the correct order, but initially cropped them to a 4:3 aspect ratio (despite being originally produced in HD). * New Year's Marathon (2018): GSN aired six hours of Wheel between 8:00 AM and 2:00 PM on January 1, 2018. * Black Friday Marathon (2010): GSN aired six hours of Wheel, consisting of two shows from Season 23 and ten from Season 24. ****Promos**** GSN has produced several promos for Wheel over the years, including a parody of the WWF (now WWE) with Pat "Powerhouse" Sajak. The network also promoted GSN in short ads during Jeopardy! episodes. Wheel of Fortune: A Timeless American Game Show Wheel of Fortune has been a staple of American television for decades, with its iconic wheel of cash and prizes captivating audiences since 1975. The show's creator, Merv Griffin, brought together three contestants to compete in a word puzzle game that has become synonymous with the name "America's Favorite Game Show." With over 7,000 episodes aired to date, Wheel of Fortune has earned its place as the longest-running syndicated game show in American history. The show's hosts, Pat Sajak and Vana White, have become household names, entertaining audiences with their banter and wit. The show's format involves contestants filling in blanks on a word puzzle board, with the goal of winning cash and prizes by spinning the iconic wheel. Viewers at home can join in on the fun by guessing along with the contestants. For those who prefer to watch Wheel of Fortune online, there are several streaming services that offer the show. Sling TV is currently the most affordable option, starting at \$40 per month, and offers access to over 80,000 on-demand movies and shows. With its entertainment package, DIRECTV STREAM also provides a robust lineup of channels, including all four major networks (Fox, NBC, ABC, CBS). Watch Wheel of Fortune on various streaming services for \$64.99-\$74.99/month, including unlimited cloud DVR and multiple device support. Options include fuboTV's Pro plan (\$74.99/month), Vidgo's Plus package (\$64.95/month), YouTube TV (\$64.99/month), and more.

What is the wheel of fortune mean. How often is wheel of fortune rok. Tv guide wheel of fortune magazine. Wheel of fortune show. What channel is wheel of fortune on and what time. Wheel of fortune tv show. Wheel of fortune tv show uk. What channels are wheel of fortune on. Wheel of fortune tv. What time is wheel of fortune on tv tonight. Wheel of fortune australia tv guide.