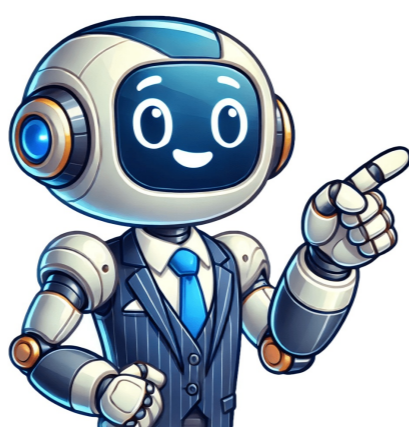


I'm human



VCDS software and its accompanying hardware are the property of Ross-Tech, LLC / Uwe M. Ross, with copyrights from 2000 to 2024. The use of VCDS or its components for de-compilation, disassembly, reverse-engineering, alteration, redistribution, or as a reference tool without prior consent is strictly prohibited. By downloading VCDS, users acknowledge that it is provided "as is" and that they are using it at their own risk. While extensively tested, VCDS may not work correctly with every system in every car. Users agree to hold Ross-Tech harmless for any damage to their computer or car and are advised to keep the software up-to-date. The software can be installed on a PC's hard disk but must have internet access to update firmware. It works with Windows 7, 8, 10, and 11 (32-bit and 64-bit) but not in "S mode." Earlier versions of Windows like 2000, XP, and Vista might still work, but they are no longer supported. VCDS has native builds for ARM CPUs running Windows 10 or 11 with HEX-NET or HEX-V2 interfaces. The software release is not compatible with older Windows versions such as 95, 98, ME, and NT4. Additionally, computers with ARM CPUs may experience issues with some HEX-NET interfaces via WiFi. For those experiencing this problem, a temporary workaround using the USB cable can be employed until the issue is resolved. Release 24.7 requires a licensed Ross-Tech interface, including genuine HEX-, KEY-, KII-, or Micro-CAN series interfaces. It does not support third-party interfaces or older "low-tech" interfaces sold before 2004. Registered users of VAG-COM or VCDS-Lite software may need to consider the interface upgrade program for compatibility with newer cars. All model-year 2019 and newer cars require current Ross-Tech interfaces, while legacy interfaces like HEX+CAN and Micro-CAN will not work properly with these vehicles. Support for "Mk.8" and ID.x chassis cars is limited due to software restrictions. The default installation folder is C:\Ross-Tech\VCDS. It's essential not to install in the \Program Files\ tree on systems running Windows Vista or newer. To remove old versions, delete shortcuts from your Start menu and Desktop, as well as the installed program folders. The current version is Release 24.7.1 with Data Version 20240919 / DS356.3. VCDS-Mobile and HEX-NET are trademarks of Ross-Tech, LLC. Ross-Tech is not affiliated with the Volkswagen Group. The HEX-V2 Enthusiast USB Interface works with VCDS via USB to turn a Windows PC into a factory-level diagnostic tool for Volkswagen, Audi, Seat, or Skoda automobiles. ****VCDS HEX-V2 Cable Overview**** * Software Version: V2024.09 * Support Languages: English, French, German, Chinese, Russian, Italian, Czech, Hungarian, Spanish, Portuguese, Swedish, Dutch, Russian (requires a loader for other languages) * Vehicle List * System Requirements: Windows 7 or newer ****Important Notes**** * To download the latest software version V2024.09, visit the official website: * Language options are limited; please specify your language preference during ordering. * Please note the following system requirements and warnings: 1. Disable antivirus software and disconnect from the internet before installation to avoid compatibility issues. 2. Only 32-bit/64-bit Windows versions are supported (not all Win10 versions work). 3. The CD may become damaged; if it's unreadable, please contact us for a download link. ****Installation Guide**** 1. Install VCDS-Release-23.3.1-Installer.exe 2. If installation is successful, do not run the VCDs software and delete shortcuts on the desktop. 3. Copy VCDSLoader.exe to the installation folder and create a shortcut on the desktop. 4. First time plugging in cables, wait for VCDSLoader.exe to run, then perform self-test and save data. 5. Turn off all VCDs software, plug in your car, and run VCDSLoader.exe again. ****Additional Information**** For more information on auto repair software, please refer to

[Vcds how to use.](#) [How to install vcds on windows 7.](#) [How to install vcds on windows 10.](#) [How to install vcds 22.9.](#) [How to install vcds clone.](#) [Vcds installation list.](#) [How to install vcds 22.3.](#)