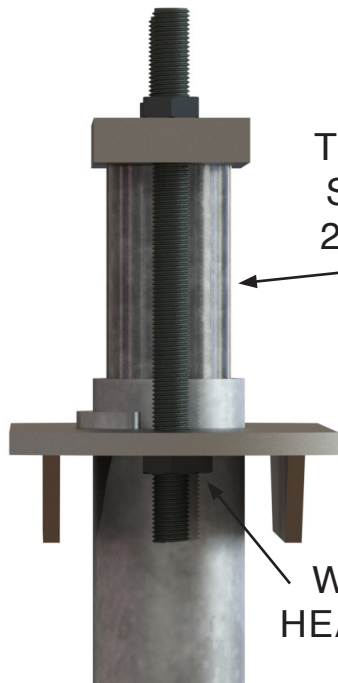
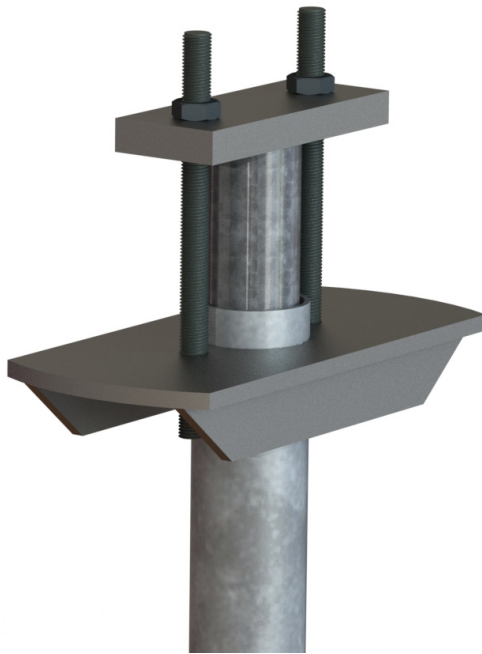


Titan Ribbed Slab Bracket

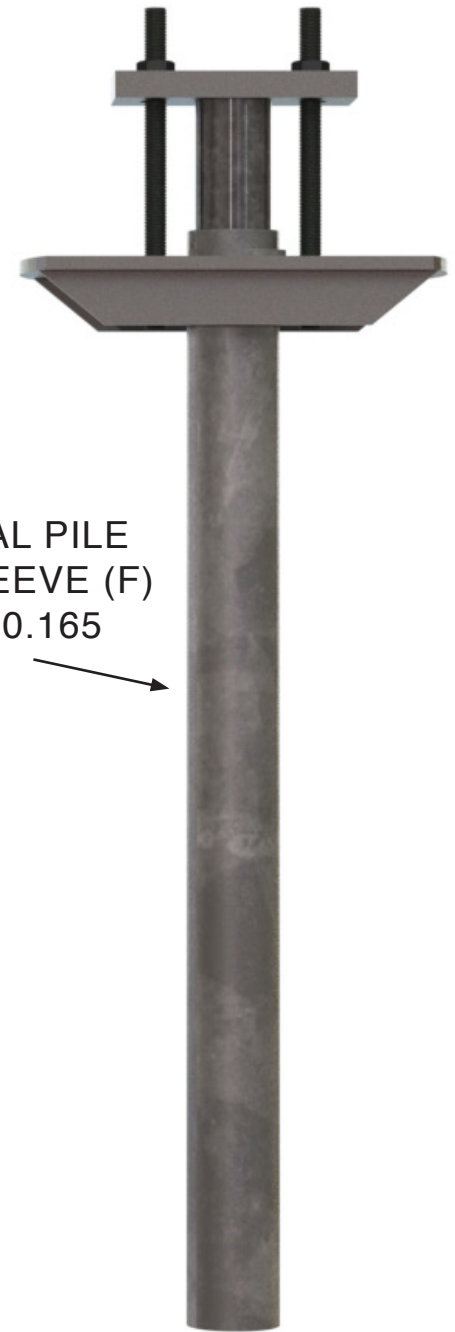
TITAN
PRODUCTS



TYPICAL PILE
SECTION (F)
2.875 X 0.165

WELDED 3/4"
HEAVY HEX NUT

EXTERNAL PILE
GUIDE SLEEVE (F)
3.500 X 0.165



- Ultimate Bearing Capacity = 50,000 lbs
- Total Bearing Surface Area = 100 in²
- Bearing Surface Minus 10" Dia. Core = 46 in²
- Weight = 20 lbs
- Piles are Field Tested During Installation

- Installed with Portable Equipment
- Compatible with Titan SP-90 Piering System's Pile Guide Sleeve, 2-7/8" Pier Sections, and Lifting Assemblies
- Compatible with 3.5" Helical or Push Pier Tubular Shafts
- Option Available without Pile Guide Sleeve

The capacity of the Titan Ribbed Slab Bracket foundation support system is a function of the capacity of pier pipe and soil surrounding the pipe, capacity of the load bearing stratum, bracket, foundation strength and strength of the bracket to foundation connection. Actual capacities could be lower than the bracket capacity.