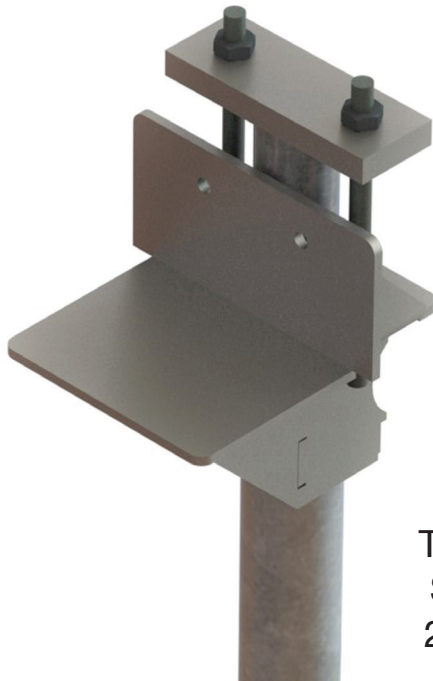
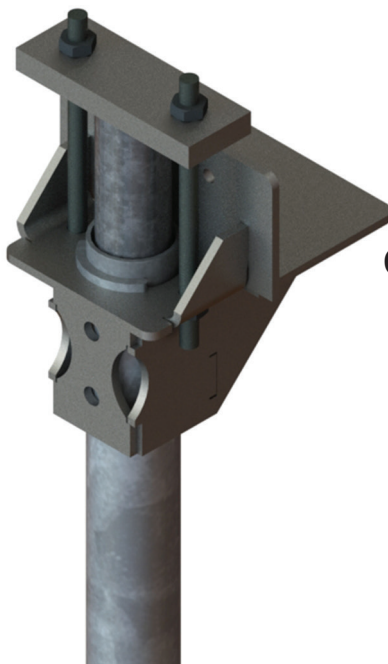




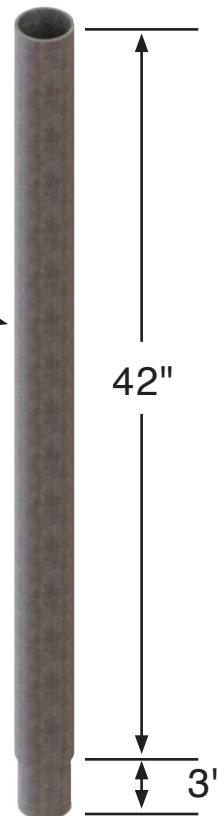
ESR - 4914



TYPICAL PILE
SECTION (F)
2.875 X 0.165



CONNECTOR
SLEEVE
2.50 X 0.180



EXTERNAL PILE
GUIDE SLEEVE (F)
3.500 X 0.165

PILE STARTER
SECTION (F)
2.875 X 0.165

FRICTION
REDUCING
RING

(F): FLO-COAT IN-LINE
GALVANIZED COATING

- Bracket Available in Black or Hot Dip Galvanized
- Ultimate Bearing Capacity = 90,000 lbs
- Bearing Surface Area = 64 in²
- Friction Reducing Ring
- Piles are Field Tested During Installation

- Standard Lift = 5.5 Inches
- Additional Lift Available with Extended All Threads
- Manufacturer's Limited 25 Year Warranty
- External Pile Guide Sleeve Helps Insure Vertical Alignment and Increases Pile Stiffness in Excavated Area

The capacity of the Titan SP-90 foundation support system is a function of the capacity of pier pipe and soil surrounding the pipe, capacity of the load bearing stratum, bracket, foundation strength and strength of the bracket to foundation connection. Actual capacities could be lower than the bracket capacity.