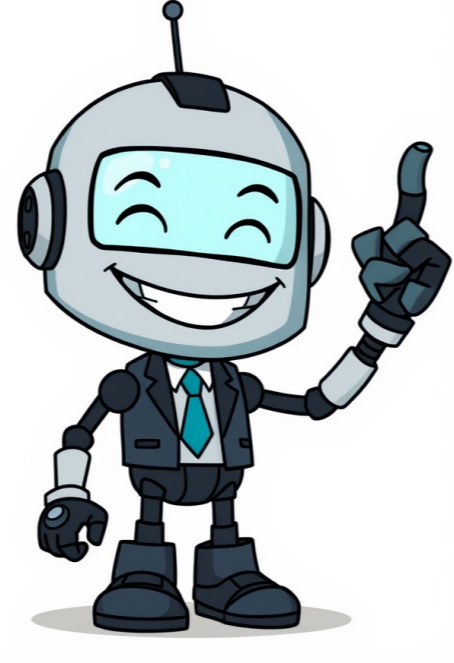


I'm not a bot































I can help you with your Casio F-91W watch. Here's a guide to get you started. ===== If you're having trouble with your Casio F-91W, check out our troubleshooting guide in the manual PDF. The "Troubleshooting" section is where most common issues are resolved. Find the correct page number using the table of contents and enter it into the page number box on the right-hand side of the document viewer. The digital watch features a digitAccuracy that can be accurate within  $\pm 30$  seconds a month. It boasts various functionalities, including: Regular timekeeping mode offers the following: - Hour, minute, second, am/pm, date, and day - Auto-calendar set at 28 days for February - Daily alarm mode - Hourly time signal function - Stopwatch mode Measuring capacity is up to 59 minutes and 59.99 seconds, with a measuring unit of 1/100th of a second in Normal time, net time, split time, and 1st-2nd place times. Battery life is estimated at approximately 7 years on CR-2016 type batteries (except for Module 1271) or 10 years on BR-2020 type batteries (for Module 1271 only). Some notable features include the ability to store up to 200 split time and lap time records in watch memory, as well as the Recall Mode to view latest measurement data. Additionally, pressing E in Timekeeping Mode toggles between date displays. Note: There is no mention of any unit components being damaged or malfunctioning due to certain conditions.