



QUATTRO
PROJECT
ENGINEERING

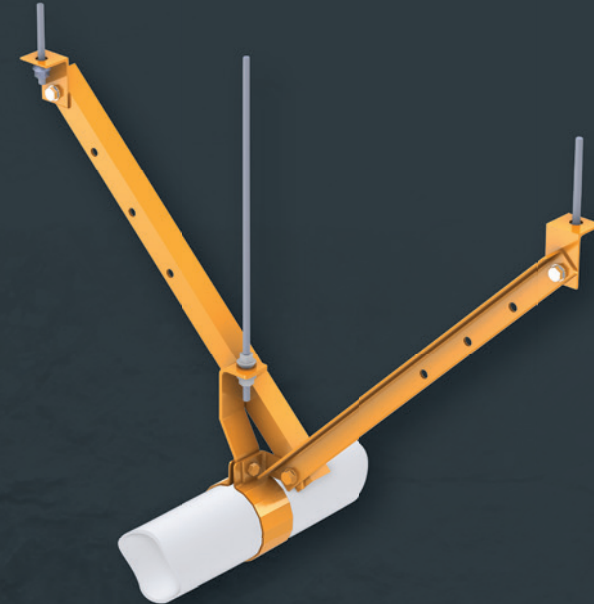
ENGINEERING PARTNERSHIPS

A fully integrated and certified system to hang and brace all underground infrastructure pipework that greatly reduces installation times and increases operational flexibility.

Offering a single point of pipe suspension, the QClaw has been engineered giving full consideration to the operational process required to install pipe in the underground environment. As such, material handling is significantly reduced while drilling time is halved resulting in huge efficiency gains and reduced exposure hours. The QBrace system integrates seamlessly with the QClaw and offers flexibility around bracing location, length and configuration. Combined, the QClaw and QBrace offer a certified solution that is proven to save time and money.



- Certified to a SWL of 1,000kg
- Halves requirement for rock bolts
- Installation time greatly reduced
- Reduced cost
- Various sizes available



- Certified to a SWL of 2,500 kg
- Integrates with QClaw
- Adjustable length
- Galvanised surface finish
- Longitudinal and Lateral arrangements

quattrope.com

OFFICES

Perth
Kalgoorlie
Brisbane

Bravo Building, 1 George Wiencke Drive, Perth Domestic Airport, WA 6105
15 Hunter St, Kalgoorlie, WA 6430
Level 17, 127 Creek St, Brisbane City 4000

P +61 8 9373 1140 F +61 8 9373 1144
E info@quattrope.com

Products



These QProducts offer a superior fastening and bracing solution for underground mine service pipes due to the following;

SAFETY

- Engineered and certified in accordance with statutory codes
- QClaw rating: 1T
- QBrace rating: 2.5T (Tensile load)
- Significantly reduced manual handling
- Integrated design and analysis across all load scenarios

ECONOMICAL

- 50% reduction in rock bolts and associated drilling activities
- Integrated structural solution

EFFICIENT

- Reduced exposure hours
- 'Claw' holds pipe without assistance during install
- QBrace integrates with QClaw for bracing load resolution

SIMPLE

- Pipe alignment is simple, fast and consistent
- Install procedures provided

An integrated, structural certified pipe hanging and bracing system designed specifically for underground infrastructure. The QClaw/QBrace system significantly reduces installation times by removing up to half of the rock bolt installations required – reduced exposure hours and lower cost.

Surface Treatment:
Hot Dip Galvanised

QClaw Rating: 1T

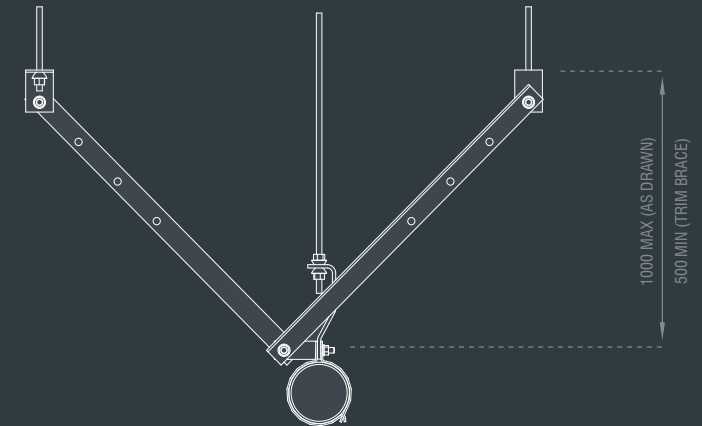
QBrace Rating: 2.5T

QClaw Sizes:

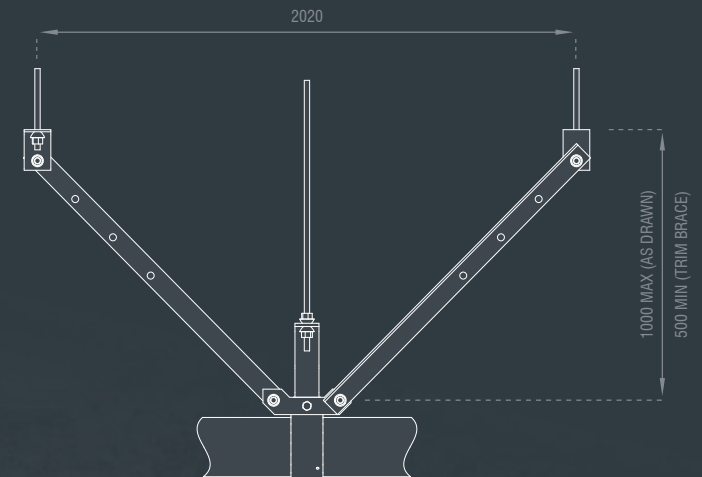
250NB - Steel Pipe
200NB - Steel Pipe
150NB - Steel Pipe
280mm - Poly Pipe
250mm - Poly Pipe
150mm - Poly Pipe

Q Claw Type	Rated Capacity
All Sizes	1000kg

Q Brace Type	Brace Length
Max X	1000mm
Min X	500mm
Max Y	1010mm
Min Y	505mm



Lateral Thrust Brace Elevation



Longitudinal Thrust Brace Elevation

OFFICES

Perth Bravo Building, 1 George Wiencke Drive, Perth Domestic Airport, WA 6105
Kalgoorlie 15 Hunter St, Kalgoorlie, WA 6430
Brisbane Level 17, 127 Creek St, Brisbane City 4000

P +61 8 9373 1140 **F** +61 8 9373 1144
E info@quattrope.com

quattrope.com