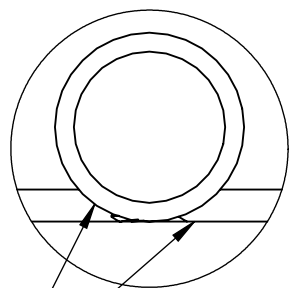
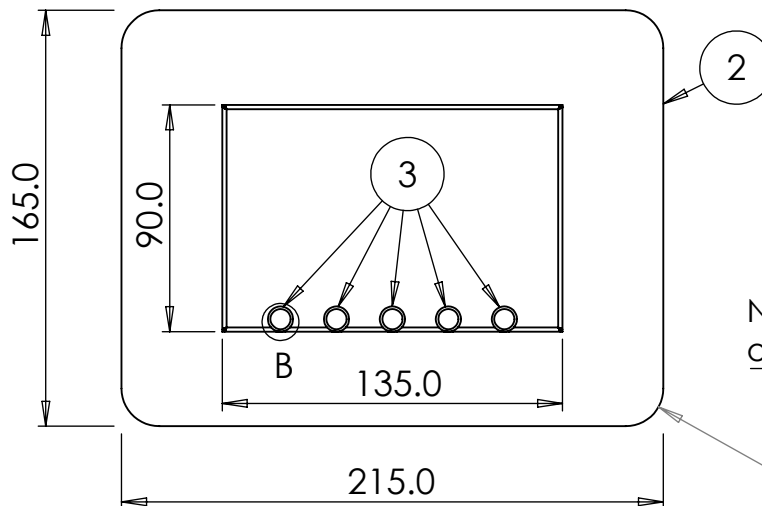


All Welds must be Watertight

DETAIL B
SCALE 2.5 : 1



Step 2: Tack Weld
10mm Bars to Back Cover
5 Bars, 2 positions per Bar

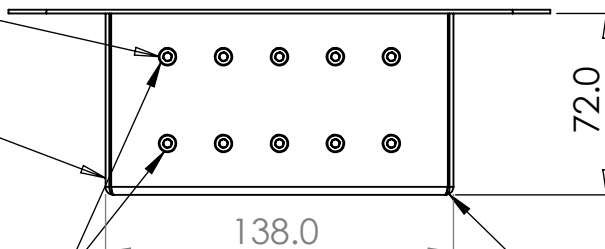


NB: Chamfered End
of Rod at opening

4x R15.0

10X (4)

(1)

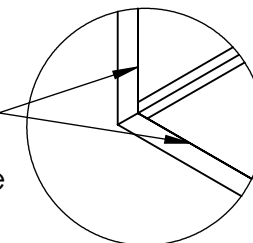


Step 1: Screw 10mm Bars
to Back Cover with 2
M4 Screws (5 Bars)


Back Cover corners to be
welded closed after bending

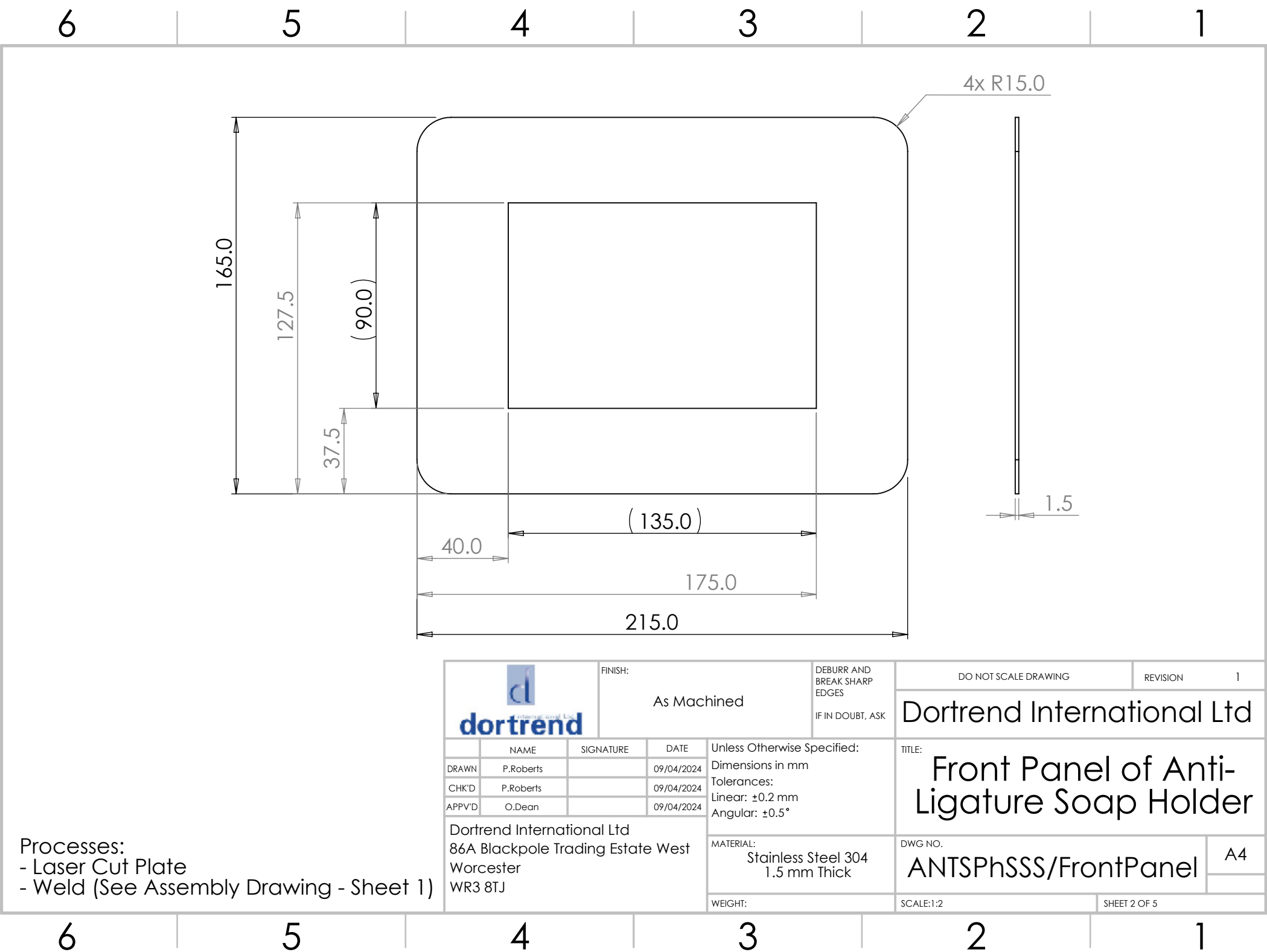
DETAIL A
SCALE 2.5 : 1

Inside faces of the
Back Cover are
flush with opening
on the Front Panel
If any welds on
the opening, these
must be finished



ITEM NO.	PART NUMBER	DESCRIPTION	QTY.
1	Soap Dish Holder Back Cover	1.5 mm St/St, 4 Bends @ IR 1.7 mm	1
2	Soap Dish Holder Front Panel	1.5 mm St/St - Flat Plate	1
3	10mm Rod	10 mm Diameter St/St Rod	5
4	M4x6 mm Socket Head Cap Screw	18-8 Stainless Steel Socket Head Screw	10

		FINISH: Satin - DP1 To Be Watertight		DEBURR AND BREAK SHARP EDGES IF IN DOUBT, ASK		DO NOT SCALE DRAWING		REVISION 1	
						Dortrend International Ltd			
	NAME	SIGNATURE	DATE	Unless Otherwise Specified: Dimensions in mm Tolerances: Linear: ±0.2 mm Angular: ±0.5°		TITLE: Anti-Ligature Soap Holder Assembly			
DRAWN	P.Roberts		09/04/2024						
CHK'D	P.Roberts		09/04/2024						
APPV'D	O.Dean		09/04/2024						
Dortrend International Ltd 86A Blackpole Trading Estate West Worcester WR3 8TJ				MATERIAL: Stainless Steel 304		DWG NO. ANTSPHSSS/GA			A4
				WEIGHT:		SCALE:1:3		SHEET 1 OF 5	



dortrend
International Ltd

FINISH:

As Machined

DEBURR AND
BREAK SHARP
EDGES

IF IN DOUBT, ASK

DO NOT SCALE DRAWING

REVISION

1

Dortrend International Ltd

TITLE:

Front Panel of Anti-
Ligature Soap Holder

DWG NO.

ANTSPHSSS/FrontPanel

A4

Unless Otherwise Specified:

Dimensions in mm

Tolerances:

Linear: ± 0.2 mm

Angular: $\pm 0.5^\circ$

MATERIAL:

Stainless Steel 304
1.5 mm Thick

WEIGHT:

SCALE:1:2

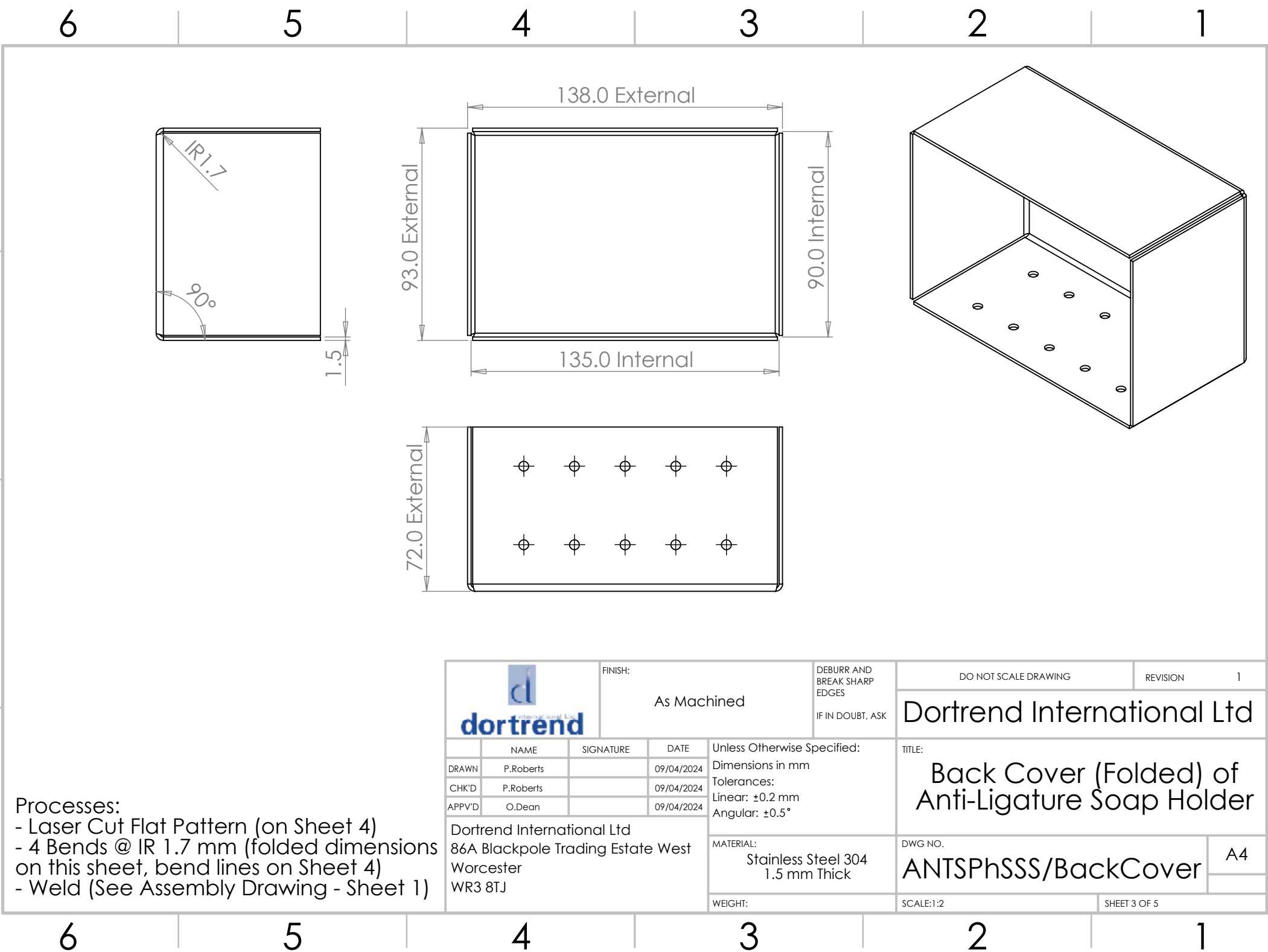
SHEET 2 OF 5

Processes:

- Laser Cut Plate

- Weld (See Assembly Drawing - Sheet 1)

Dortrend International Ltd
86A Blackpole Trading Estate West
Worcester
WR3 8TJ



D

D

C

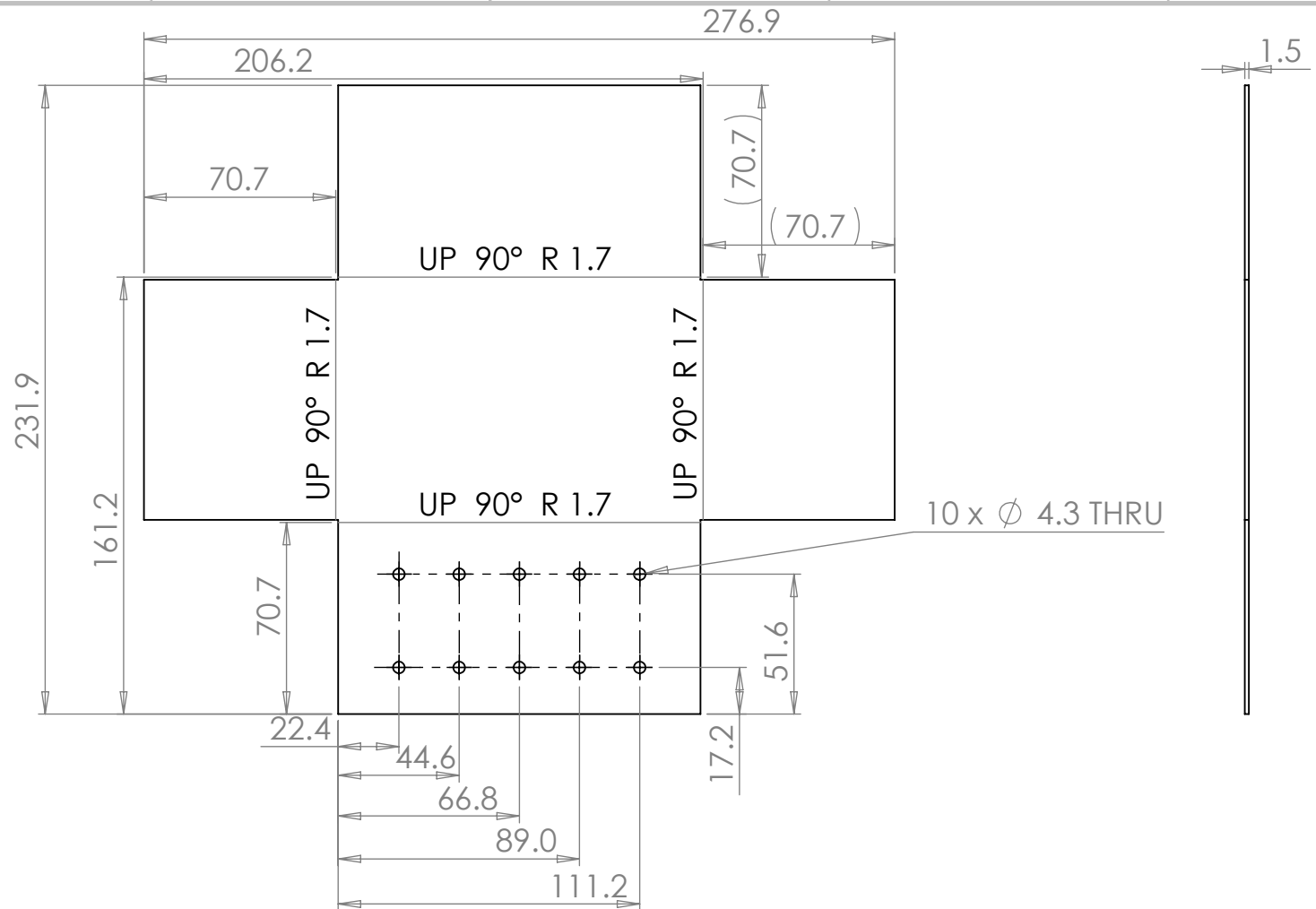
C

B

B


A

A

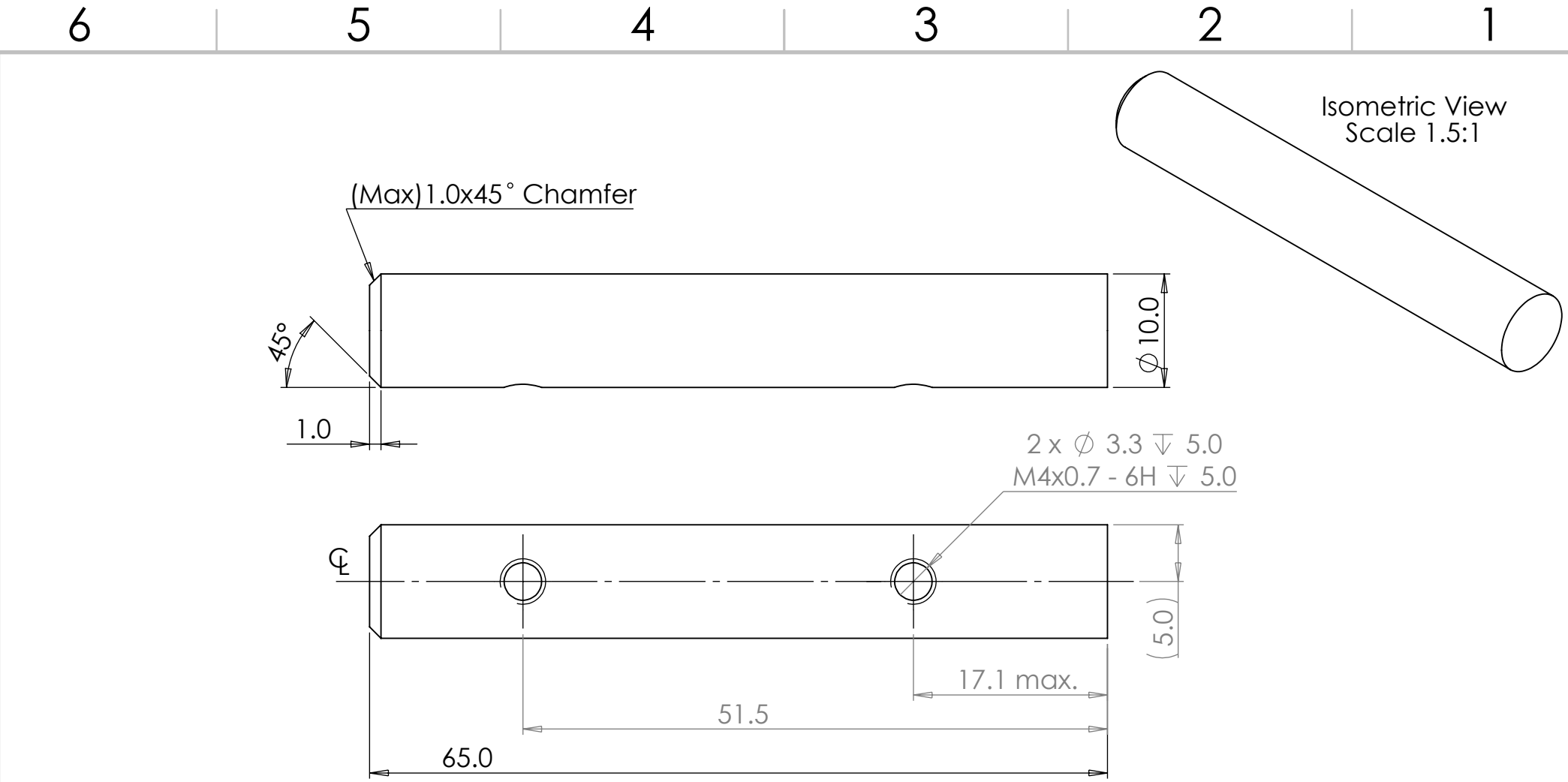


Processes:

- Laser Cut Flat Pattern (on this sheet)
- 4 Bends @ IR 1.7 mm (folded dimensions on Sheet 3, bend lines on this sheet)
- Weld (See Assembly Drawing - Sheet 1)


		FINISH: As Machined		DEBURR AND BREAK SHARP EDGES IF IN DOUBT, ASK		DO NOT SCALE DRAWING		REVISION 1	
						Dortrend International Ltd			
		NAME		SIGNATURE		DATE		TITLE: Back Cover (Flat) of Anti-Ligature Soap Holder	
DRAWN		P.Roberts				09/04/2024			
CHK'D		P.Roberts				09/04/2024			
APPV'D		O.Dean				09/04/2024			
Dortrend International Ltd 86A Blackpole Trading Estate West Worcester WR3 8TJ						Unless Otherwise Specified: Dimensions in mm Tolerances: Linear: ± 0.2 mm Angular: $\pm 0.5^\circ$		TITLE: Back Cover (Flat) of Anti-Ligature Soap Holder	
						MATERIAL: Stainless Steel 304 1.5 mm Thick		DWG NO. ANTSPHSSS/BackCover	
						WEIGHT:		SCALE:1:2.5	
								SHEET 4 OF 5	

A4



Processes:

- Cut Bar to Length
- Drill and Tap M4 threaded holes
- Chamfer Front Tip of Rod
- Weld (See Assembly Drawing - Sheet 1)

 dortrend <small>International Ltd</small>		FINISH:		DEBURR AND BREAK SHARP EDGES		DO NOT SCALE DRAWING		REVISION	
		As Machined		IF IN DOUBT, ASK		Dortrend International Ltd			
	NAME	SIGNATURE	DATE	Unless Otherwise Specified: Dimensions in mm Tolerances: Linear: ±0.2 mm Angular: ±0.5°		TITLE: 10mm Rod for Anti- Ligature Soap Holder			
DRAWN	P.Roberts		09/04/2024						
CHK'D	P.Roberts		09/04/2024						
APPV'D	O.Dean		09/04/2024						
Dortrend International Ltd 86A Blackpole Trading Estate West Worcester WR3 8TJ				MATERIAL:		DWG NO.		A4	
				Stainless Steel Bar 10 mm Diameter		ANTSPHSSS/Rod			
				WEIGHT:		SCALE:2:1		SHEET 5 OF 5	