

D

D

C

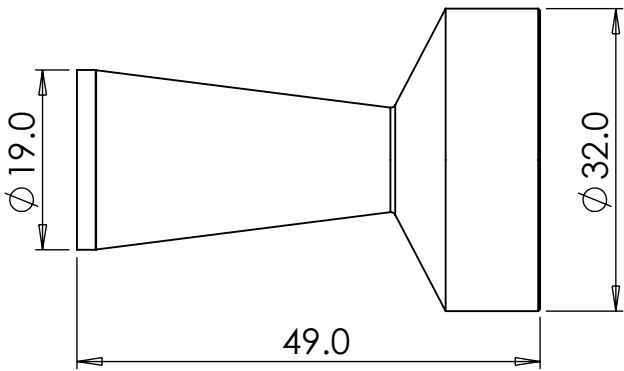
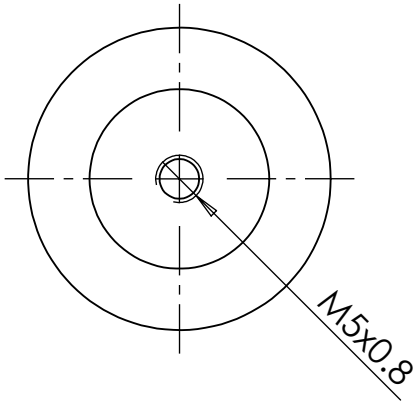
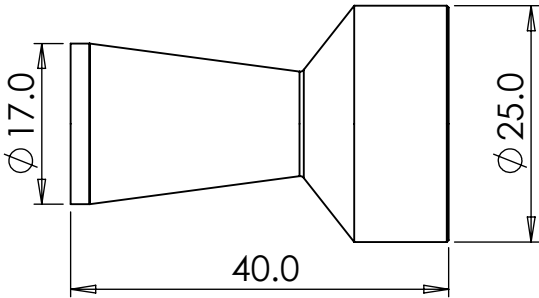
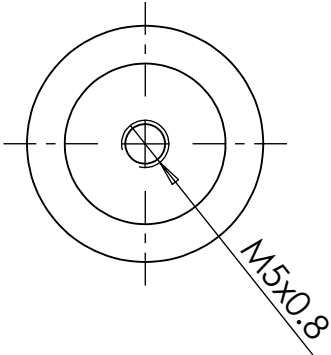
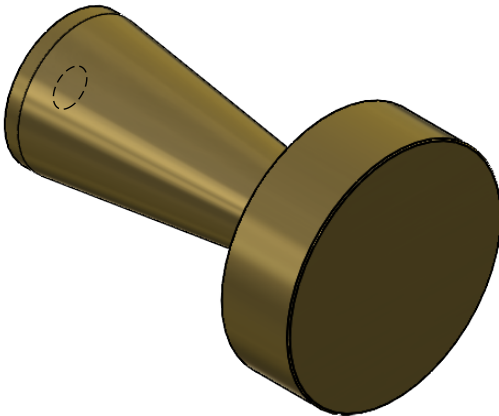
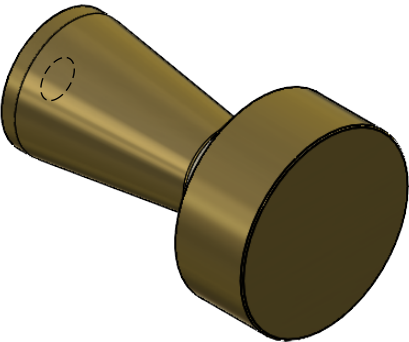
C

B

B


A

A



Small IND Cupboard Knob:
Ø 25 mm, Projection 40 mm (Base Ø 17 mm)

Large IND Cupboard Knob:
Ø 32 mm, Projection 49 mm (Base Ø 19 mm)

		FINISH: Satin/Aged		DEBURR AND BREAK SHARP EDGES IF IN DOUBT, ASK		DO NOT SCALE DRAWING		REVISION 1	
						Dortrend International Ltd			
		NAME P.Roberts		SIGNATURE		DATE 16/04/2025		TITLE: IND Cupboard Knob Range	
DRAWN		CHK'D		APPV'D		Unless Otherwise Specified: Dimensions in mm Tolerances: Linear: ±0.2 mm Angular: ±0.5°		DWG NO. IND Cupboard Knobs	
						MATERIAL: Brass		A4	
						WEIGHT: 86 g Small, 138 g Large		SCALE: 1.25:1	
								SHEET 1 OF 1	