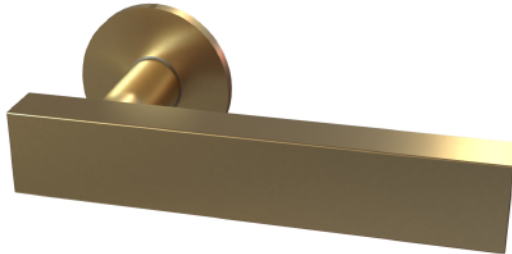


Description

Lever Door Handle



Technical Features

Function & Operation Lever door handle set solid brass flat bar

Summary of Features ROSE SYSTEMS
4MM SHARP EDGE UNSPRUNG
5MM RADIUS EDGE UNSPRUNG
6MM CONCEALED ONESIDE

Dimensions

Dimensions SEE DIAGRAM BUT REFER TOO ROSE FEATURES FOR SIZES

Finishes

Finishes Available Satin Stainless Steel ais304 GRADE

Certification

Product Classification
Grade 3 (4mm and 8mm) and Grade 4 (5mm) MORE INFO ON REQUEST

Guarantee

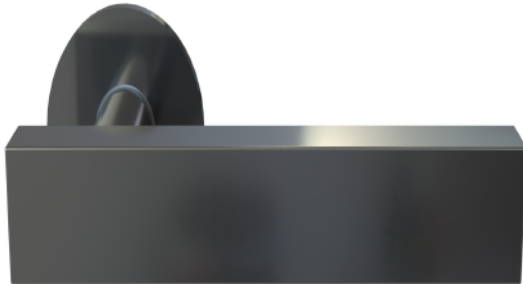
Last Reviewed

5 Year

17/02/2017

Description

lever on rose

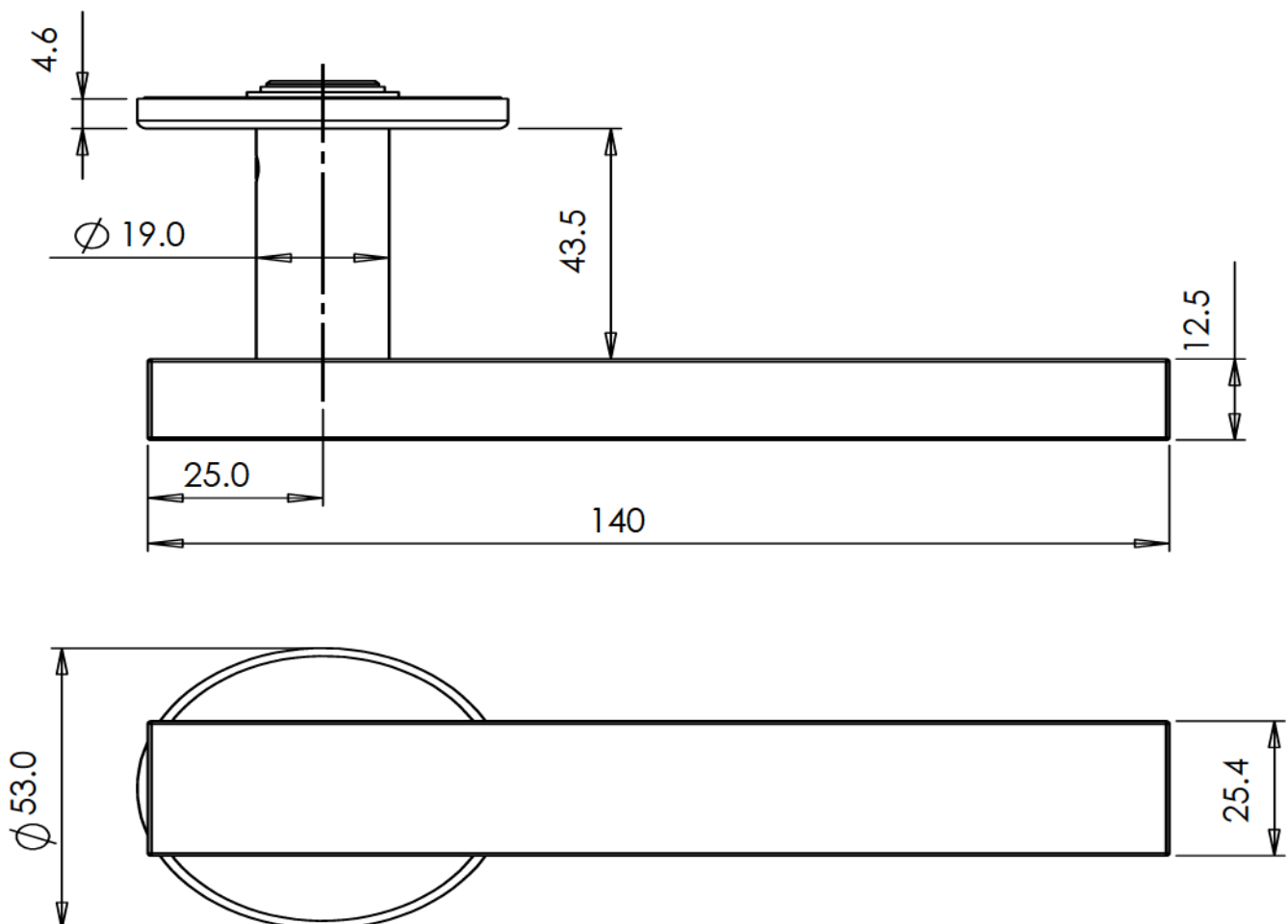


Specification Text

GENERAL HARDWARE

- Manufacturer: DORTREND
- PRODUCT CODE : FLBRCR .
- CONFIGURATIONS : solid o
- FULL SET CONCEALED
- HALF SET
- THROUGH FIX ROSE

- Type: LEVER HANDLES
- Size: 25MM
- Material/ finish: SATIN STAINLESS STEEL
- POWDER COATED
- ANTI VIRAL COATING
- PVD
- BRASS
- ALUMINIUM



For the purpose of continual product development, DORTREND reserves the right to change specifications without notice. Please accept all dimensions as approximate.

WWW.DORTREND.CO.UK