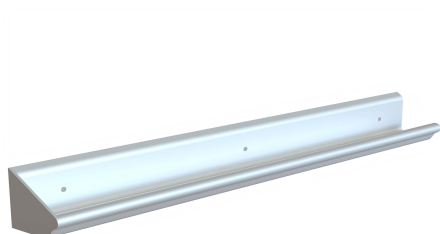


Description

Anti-Ligature grab
handle



Technical Features

Function & Operation	Grab designed to remove the ligature point provided by normal hardware. Can be fitted vertically and horizontally
Summary of Features	Anti-tamper screws

Options	Lengths can be bespoke
---------	------------------------

Dimensions

Dimensions

Projection 75mm
Plate 75x600mm

Finishes

Finishes Available

Powder coated, Satin Anodised
Aluminium

Certification

European Norm	No Harmonised European Norm
Product Classification	n/a (No Harmonised European Norm)
EC Certificate of Conformity No.	n/a (No Harmonised European Norm)
Certifire No.	n/a (No Harmonised European Norm)
Declaration of Performance	n/a (No Harmonised European Norm)
Other Test Evidence	see next page

BIM Assist™

BC(A)R Assist™*

Guarantee Mechanical

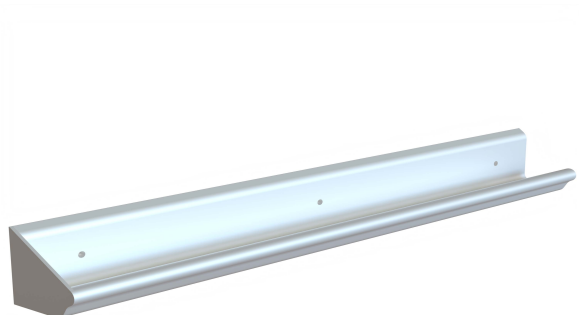
5 Year

Last Reviewed

17/02/2024

Description

Anti-Ligature Grab Handle, Bolt Fixed



Specification Text

GENERAL HARDWARE

- Manufacturer: DORTREND
- Product reference: ANTWH1BTPCWH
- Type: Anti-Ligature Grab rail
- Solid Aluminum
- 3 fixing points 6mm into anchors can be specified more and different lengths
- Powder coated to spec
- Material/ finish: Solid bar alum
- Tested in house to DHF guidelines
- <https://www.dhfonline.org.uk/downloads/download-file-documents.asp?id=51&pos=0&dir=documents&ref=/pg/publications/105.htm>

