



Description

Anti-Ligature Coat Hook

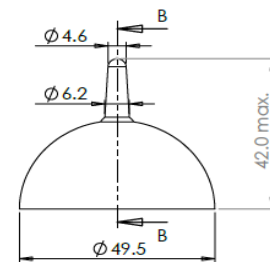


Technical Features

Function & Operation	Anti-ligature coat hook, 50mm diameter.
Summary of Features	<p>The “hook” is fixed in a ball joint held in place by a spring loaded ball bearing. It will take the weight of a normal coat but additional weight will cause it to collapse, releasing any ligature. Site adjustable for differing weight requirements this adjustment is not accessible once the hook is fitted with its tamper-proof fixings.</p> <p>Available in face and back fix as well as on a plate</p>

Options	Can be provided with 4 hooks to a plate in back or face fix configurations
---------	--

Dimensions



Dimensions	50mm diameter
------------	---------------

Finishes

Finishes Available	Satin Stainless Steel or Aluminium
--------------------	------------------------------------

Certification

Tested in accordance with DHF TS001
Technical specifications

Guarantee = 10 year

mechanical

Description

Anti-Ligature Coat Hook



Specification Text

DOOR MOUNTED COAT HOOKS

- Manufacturer: DORTREND
- Product reference: antch1

- Type: Anti-Ligature Coat Hook
- Material/ finish: [SPECIFY FINISH]

