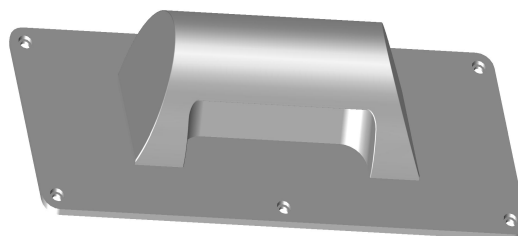


Description

Anti-Ligature Pull Handle,



Technical Features

Function & Operation Pull handle designed to remove the ligature point provided by normal door hardware

Summary of Features Solid stainless steel pull handle high level of anti ligature properties suitable for all levels.
Can be fitted without plate bolt fix, face fix on plate or b/b on plate all with
Anti-tamper screws

Dimensions

Dimensions 250X100MM PLATE

Finishes

Finishes Available Satin Stainless Steel ais304 GRADE

Certification

European Norm No Harmonised European Norm

Product Classification n/a (No Harmonised European Norm)

EC Certificate of Conformity No. n/a (No Harmonised European Norm)

Certifire No. n/a (No Harmonised European Norm)

Declaration of Performance n/a (No Harmonised European Norm)

Other Test Evidence ON REQUEST

Guarantee

Last Reviewed

20 Year

17/02/2017

Description

Anti-Ligature Pull Handle,

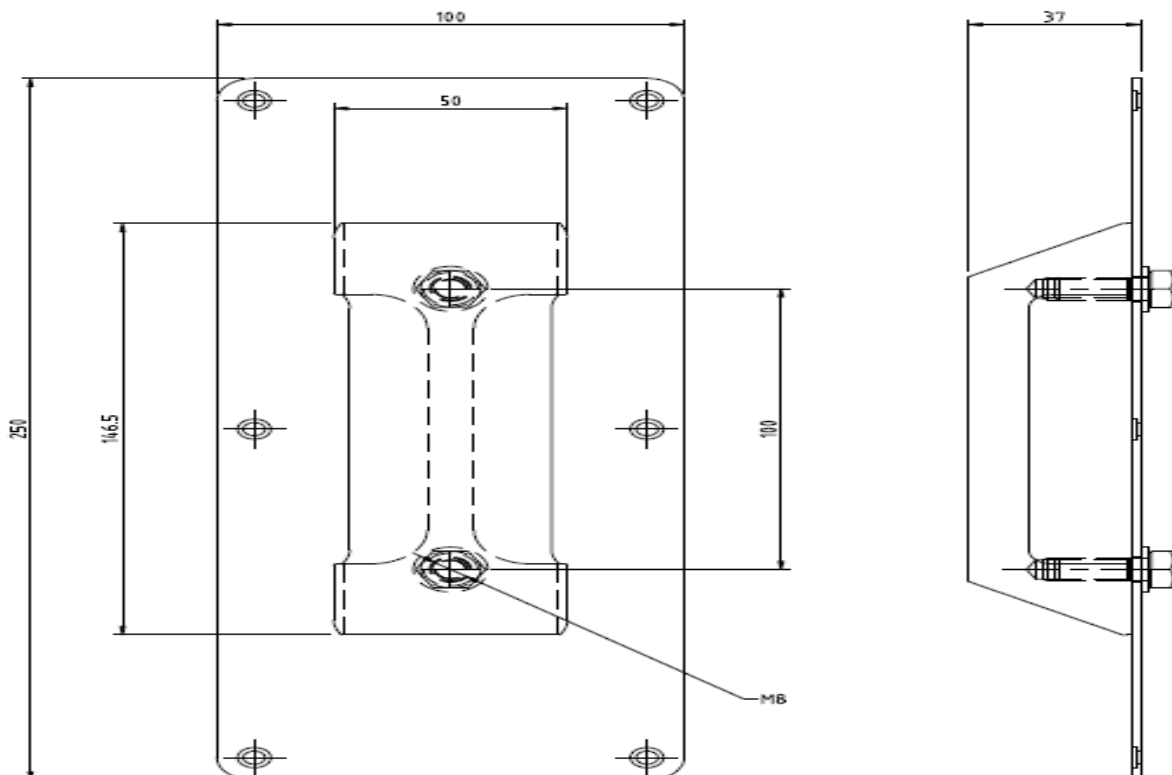


Specification Text

GENERAL HARDWARE

- Manufacturer: DORTREND
- PRODUCT CODE : ANT55
- CONFIGURATIONS : FACE FIX PLATE
BOLT FIX
BACK TO BACK

- Type: Anti-Ligature Pull Handle, Face Fixed
- Size: D25mm
- Material/ finish: SATIN STAINLESS STEEL
- POWDER COATED
- ANTI VIRAL COATING
- PVD



For the purpose of continual product development, DORTREND reserves the right to change specifications without notice. Please accept all dimensions as approximate.

WWW.DORTREND.CO.UK