



## Description

Anti-Ligature 50mm  
escutcheon



## Technical Features

Function & Operation	Anti-ligature escutcheon, 50mm diameter.
Summary of Features	The escutcheon is beveled and ligature resistant fitted with tamper-proof fixings. Can be supplied face fix and as a pair or blank in the same configuration. Euro profile, oval, keyhole or kaba

Options	euro/key/oval/blank/ back fix and face fix
---------	--

## Dimensions

Dimensions	50mm diameter 8mm thickness (spec can be changed)
------------	--

## Finishes

Finishes Available	Satin Stainless Steel or Aluminium
--------------------	------------------------------------

## Certification

European Norm	No Harmonised European Norm
Product Classification	n/a (No Harmonised European Norm)
EC Certificate of Conformity No.	n/a (No Harmonised European Norm)
Certifire No.	n/a (No Harmonised European Norm)
Declaration of Performance	n/a (No Harmonised European Norm)
Other Test Evidence	n/a

## BIM Assist™

## BC(A)R Assist™\*

## Guarantee

**10 Year**

## Description

Anti-Ligature 50mm escutcheon



## Specification Text

DOOR MOUNTED ESCUTCHEON

· Manufacturer: DORTREND

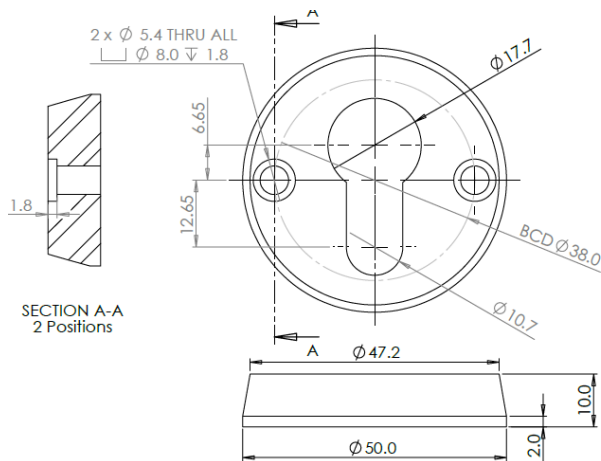
· Product reference: ant350

FF = FACE FIX

BB = BACK TO BACK

· Type: Anti-Ligature Coat Hook

· Material/ finish: [SATIN  
STAINLESS STEEL OR ANODISED  
ALUMINIUM



*For the purpose of continual product development, DORTREND reserves the right to change specifications without notice. Please accept all dimensions as approximate.*