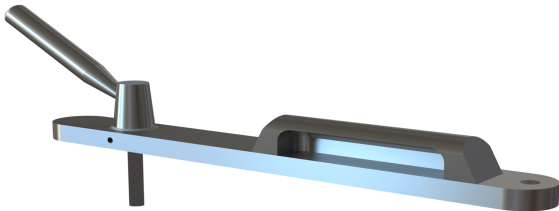
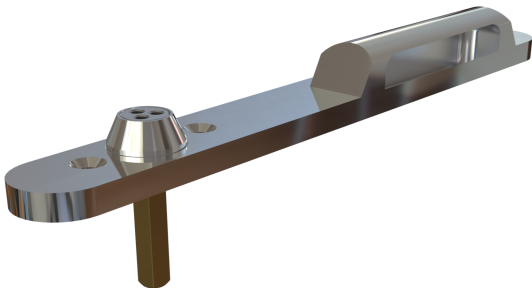




Description

Anti-Ligature Window Handle



Technical Features

Function & Operation Anti-ligature window handle

Summary of Features The handle affixes into the window system and drives the window mechanism by use of a unique 3 pin key a member of staff can lock off the window, an integral pull handle is included.
Manufactured from solid stainless steel and aluminum the key also has a hole for affixing to key fob if required

Dimensions

As image with 7mm spindle projecting 35mm from rear of product
Other dimensions see diagrams

fixings M5 machine screws

Finishes

Finishes Available Satin Stainless Steel / Aluminium

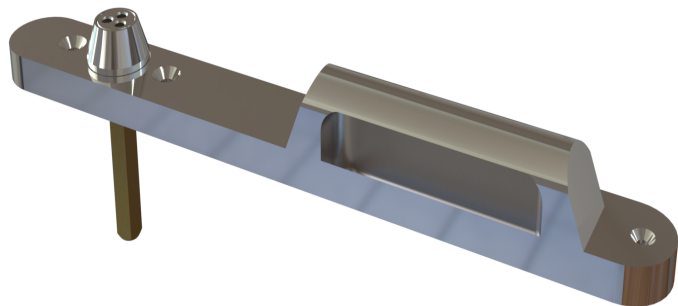
Product options ANTWIN9PMP
With unique drive key protected system
ANTWIN9PM
With drive hole key driven
ANTWIN9P8
With square spindle drive
ANTWIN92
With bar driven drive product can be removed and locked off with added locking feature on base

Guarantee

10 Year mechanical

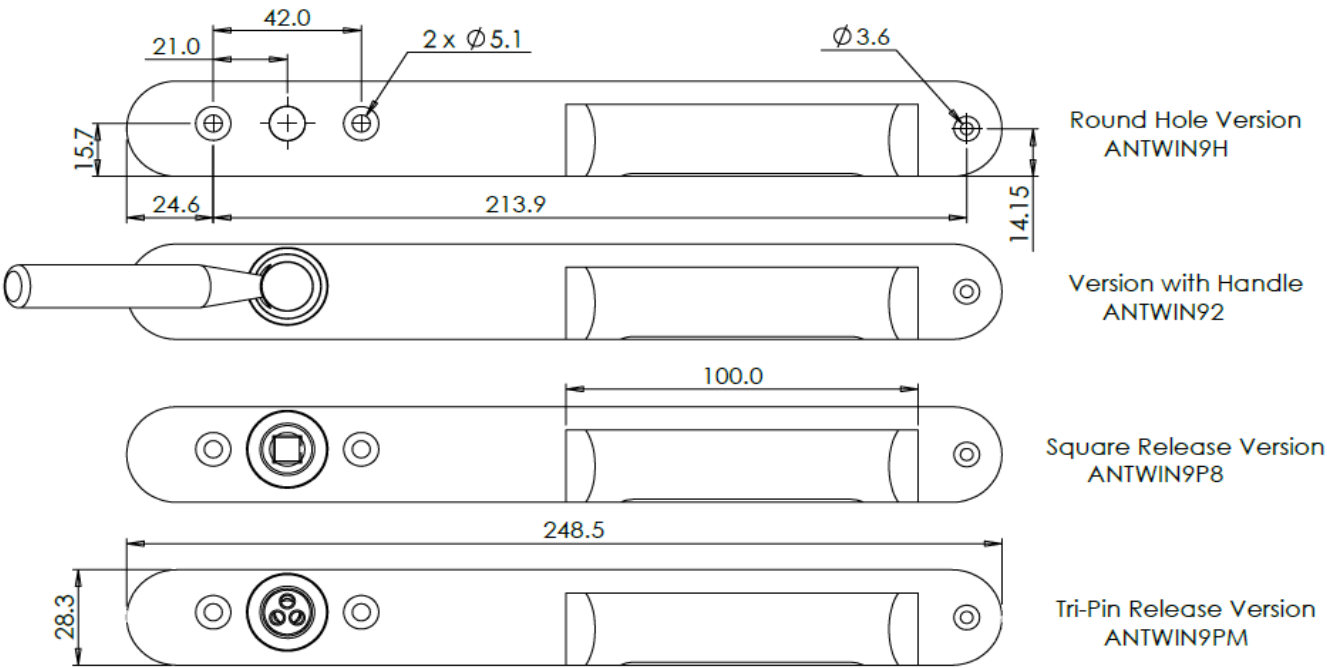
Description

Anti-Ligature Window Handle



Specification Text

- window handle
- Manufacturer: DORTREND
- Product reference: antwin9sss
- Type: Anti-Ligature Window Handle
-
-



For the purpose of continual product development, DORTREND reserves the right to change specifications without notice. Please accept all dimensions as approximate.