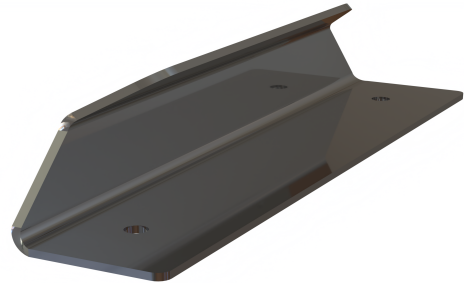
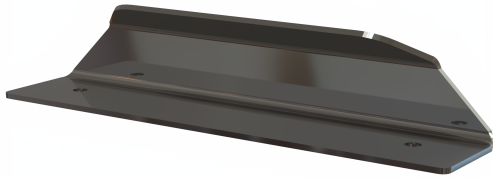


ANTWH1BTSSS Satin Stainless Steel

Description

Anti-Ligature Pull Handle, Face Fixed



Technical Features

Function & Operation Pull handle designed to remove the ligature point provided by normal door hardware

Summary of Features Anti-tamper screws

Options

FACE FIX
BOLT FIX
BACK BACK
BOLTED THROUGH TO PLATE

Dimensions

Dimensions 300x64mm

Finishes

Finishes Available Satin Stainless Steel,

BIM Assist™

BC(A)R Assist™*

Guarantee

10 Year

Last Reviewed

17/02/2017

* ROI Only

Description

Anti-Ligature Pull Handle,

Specification Text**GENERAL HARDWARE**

- Manufacturer: dortrend
- Product reference: ANTWH1BTSSS
- Type: Anti-Ligature Pull Handle, Face Fixed
- Size: 300mm
- Material/ finish: satin stainless steel

