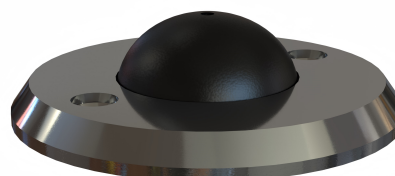
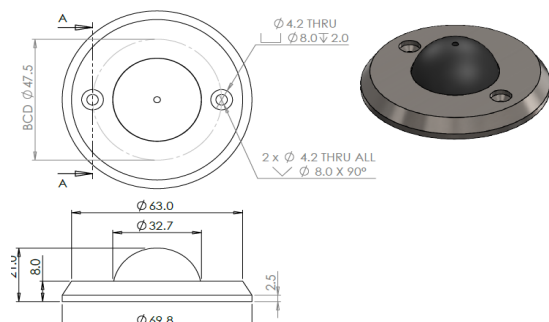




Description

Anti-Ligature Door
Stop



Technical Features

Function & Operation	Anti-ligature wall door stop 70mm diameter.
Summary of Features	The door stop is beveled and ligature resistant fitted with tamper-proof fixings. Supplied face fix it protects walls from damage

Options can be back fix

Dimensions

Dimensions 70mm diameter
8mm thickness (spec can be changed)

Finishes

Finishes Available Satin Stainless Steel or Aluminium

Certification

European Norm	No Harmonised European Norm
Product Classification	n/a (No Harmonised European Norm)
EC Certificate of Conformity No.	n/a (No Harmonised European Norm)
Certifire No.	n/a (No Harmonised European Norm)
Declaration of Performance	n/a (No Harmonised European Norm)
Other Test Evidence	n/a

BIM Assist™

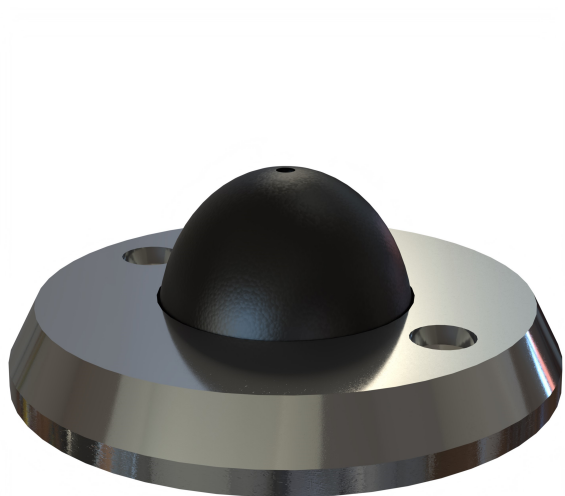
BC(A)R Assist™*

Guarantee

10 Year

Description

Anti-Ligature Wall Door Stop



Specification Text

WALL MOUNTED DOOR STOP

· Manufacturer: DORTREND

- Product reference:

ANTWDS1

· Type: Anti-Ligature Door Stop

· Material/ finish: [SATIN
STAINLESS STEEL OR ANODISED
ALUMINIUM