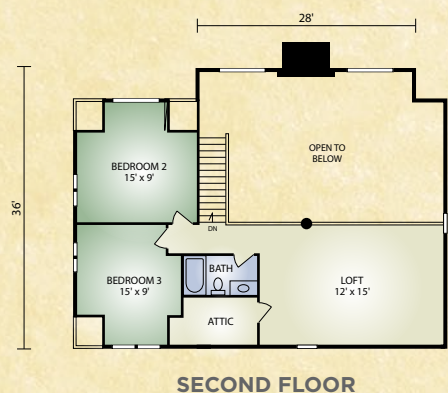
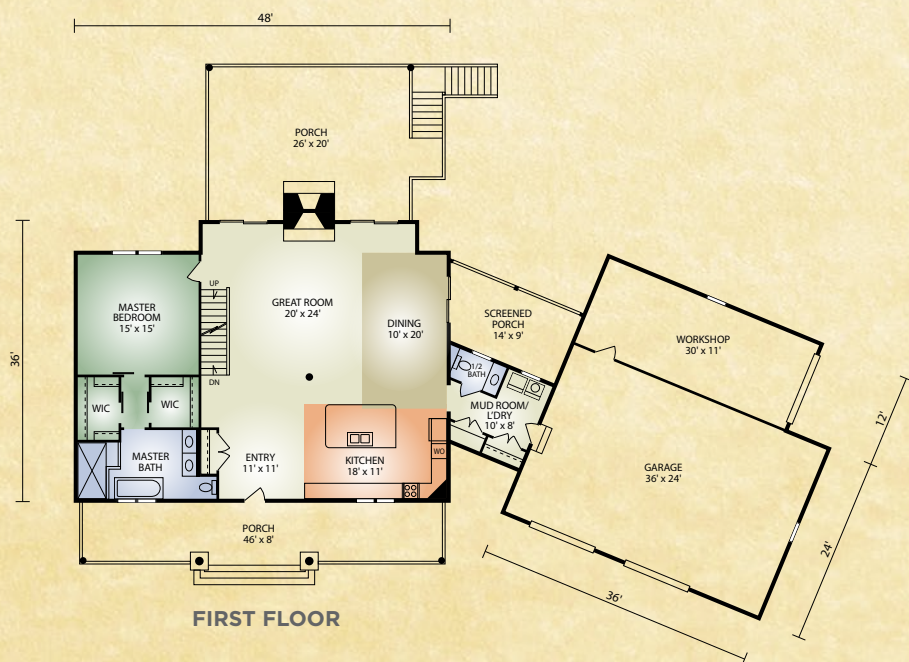


Allison

2,582 sq. ft.
3 BR / 2-1/2 BA



SECOND FLOOR



FIRST FLOOR

Invite friends over for an evening of camaraderie. Have the fire burning in the double sided fireplace and enjoy the sunset. The Allison home has many features that make you fall in love with the design. Chef size kitchen, timbered cathedral ceiling in the great-room, screened porch, his and hers closets and a spacious Master Bath. Upstairs there are two additional bedrooms and full bath. Make this one your own dream home.

Photo and floor plans may differ slightly from actual blueprints.



HOCHSTETLER
LOG HOMES & TIMBERS

552 St. Rt. 95, Loudonville, Ohio
Call 800.368.1015

Allison (Optional Basement)

**Additional 1,415 sq. ft.
1 BR/1 BA**

Optional basement adds 1,415 sq. ft.
1 br, 1 ba, recreation area, game area,
wet bar and utility room.



HOCHSTETLER
LOG HOMES & TIMBERS

552 St. Rt. 95, Loudonville, Ohio
800.368.1015