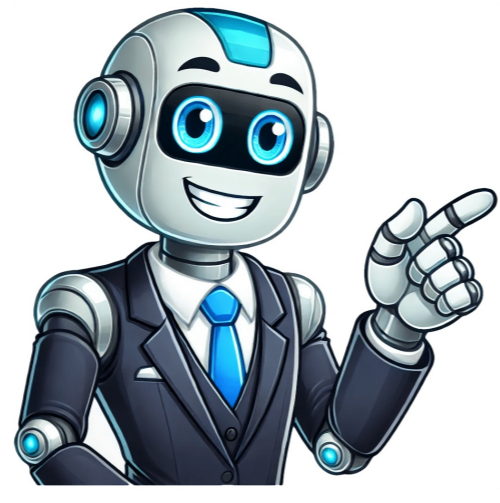


Click to prove  
you're human































Each semester's class registration times and dates are available online at the University. Students must register within these designated periods, unless they obtain prior approval from their instructor or department. For more information on registration procedures, visit the Registrars Office website. During open registration, students can choose to enroll in a course under an audit status, which means they won't receive credit for the class, but will still have access to it. However, this option is only available before the fourteenth calendar day of the semester and may not be changed later. Students who drop classes must do so formally, as failing to withdraw without approval can result in a grade of "UW," which affects their GPA. If a student doesn't return university property after dropping a class, they will receive a hold on their record. The University has rules regarding the number of times students can enroll in the same course and requires them to return any assigned property before doing so. Students are encouraged to consult with their Student Success Advisor when choosing classes. Students who haven't met course prerequisites must get approval from the Department Chair to enroll. Waiving a prerequisite doesn't mean students can skip the course; it just lets them take a higher-level course before completing the prerequisite. Senior citizens (62+ years old and eligible veterans) can register tuition-free, audit-style at Utah public universities and colleges on a space-available basis. They'll need to pay a semester administrative fee and potentially a consumable materials fee. Registration calendars are available through the Registrar's Office, while critical dates can be found on the SUU Academic Calendar. Students can withdraw from an individual course until 60% of that course has passed or after 20%, which will result in a "W" on their record. Course grades will be posted within three business days. Students can also totally withdraw from the University before final exams, and grades for previous courses will remain on their record. To totally withdraw, students must complete the Online Semester Withdrawal process, including an exit interview. The Registrar's Office is available to help with questions. In emergency situations, students may need to request a semester withdrawal due to extenuating circumstances. To do so, they should: fill out an Emergency Withdrawal Request form; provide written documentation from a care provider; and write a personal statement explaining their situation. Requests without supporting documents will not be considered. Important information regarding withdrawals and their impact on academic records is crucial for students receiving financial aid. Federal law dictates that students who completely withdraw from the University may be required to repay a portion of the disbursed federal aid due to unearned portions. This obligation includes returning funds to Southern Utah University and/or the U.S. Department of Education, which were applied towards tuition and fees. Students should discuss potential financial consequences with a representative in the Office of Financial Aid & Scholarships before withdrawing. Withdrawal policies can be found by contacting the Registrar's Office or visiting the SUU Academic Calendar for official dates. Although efforts are made to minimize changes, revisions may occur due to circumstances warranting updates. The SUU Academic Calendar is subject to change without advance notice; however, this website will reflect any necessary adjustments. Common questions about withdrawals and academic calendars include how to add the calendar to one's Google account (by following directions on "How to Add the Academic Calendar") and why there are multiple aviation dates listed. Aviation students take classes in both terms, making it impractical for SUU to create separate calendars for them without treating VA-funded students differently. The 2024-2027 academic cycle has seen SUU adjust its Spring Break schedule to better align with Iron County School District's break. This change aims to synchronize the two breaks but does not guarantee future alignment. Key dates in the upcoming semester include: \* Full Session: Spring Semester Begins on January 8 \* 1st Session: \* Last Day to Add: January 15 \* Commenced Attendance Due: January 15 (requires instructor signature) \* Commenced Attendance Drop: January 24 \* 2nd Session: \* Last Day to Add: (Not specified) \* MLK Day: Campus Closed on January 20 Monday, February 17 Presidents' Day (Campus Closed) \* Academic Calendars \* The University has two semesters: Faust (Fall) and Vr (Spring). The dates for each semester vary, but generally, they fall within the following periods: \* Faust: August to December \* Vr: January to June There are also breaks throughout the year: \* Sommerferie (Summer break): mid-June to mid-August \* Juleferie (Winter break): mid-December to early January \* Pskeferie (Easter break): Monday after Palm Sunday to Tuesday after 2nd Easter Day \* Important Dates \* For each semester, there are specific dates for: \* Adding or dropping courses \* Commencing attendance \* Withdrawing with a "W" grade \* Last day to change to audit status \* Refund deadlines \* Instruction ends and grades due These dates vary depending on the program and course. Students can find detailed information about these dates in their course outlines. \* Session Dates \* There are two sessions within each semester: Session 1 and Session 2. The exact dates for each session may differ, but generally, they fall within the following periods: \* Session 1: late May to mid-June (Vr) or early August to mid-October (Faust) \* Session 2: late June to early July (Vr) or mid-October to mid-November (Faust) Note that there are also specific dates for holidays and breaks throughout the year, which may affect class schedules. Important Academic Dates for July and August: July 10th marks the last day to add or drop a course without penalty. It's also the final opportunity to switch to an audit format. Furthermore, this date signifies the commencement of attendance tracking, which requires instructor verification. Any changes made after this point will incur penalties. The following week observes Pioneer Day, with both July 24th and July 25th being non-academic days. On July 28th, students can withdraw from individual courses with a W grade until August 14th for all classes. Instruction officially concludes on August 17th, after which grades are due by August 20th. Please note: This information was last updated on January 21st, 2025, and pertains to the academic year 2025.

Suu schedule 2023. Suu academic calendar 2024. Academic calendar suu. Suu academic calendar 2023.