



Northland
Community
Foundation

2025 Impact Report



Chair/CE Report

Tēnā koutou katoa,

It is our pleasure to present the 2024–2025 Northland Community Foundation Impact Report.

We began 2025 with a focus on growing the Foundation, and building meaningful connections with donors, community organisations and businesses throughout Te Tai Tokerau. In 2025 we saw steady growth in the Foundation's reach and impact, with the Foundation receiving a significant bequest, featuring in local news stories, launching a new website, and partnering with a local company as a philanthropic partner. This growth means that the Foundation is now reaching more Northlanders who are passionate about giving back to Te Tai Tokerau.

We warmly welcome our new donors and extend our heartfelt thanks to our longstanding supporters and wider community. It is an absolute privilege to work alongside generous Northlanders, to learn about their philanthropic aspirations and to build a brighter future for the causes they care about.

We also extend our appreciation to our tireless ambassadors Richard Alspach, Diane Pennington, Richie Guy, Jane Scripps, Gareth Foster and Brent Eastwood who have been instrumental in connecting with the Northland community and promoting the Foundation.

In 2025 we welcomed Hal Harding to the Board of Trustees. Hal, based in Dargaville, brings a wealth of knowledge and experience, and believes firmly in the vision of the Foundation. We are grateful for his support on the board.

We would like to acknowledge and thank Nicola Hartwell, who stepped down from the Board in December 2025 after joining us as a trustee in 2019, and as deputy chair since 2024. Nicola made a significant contribution, with commitment, dedication and focus over many years. We are grateful for her guidance and service to the Foundation.

In 2025, the Foundation reached a significant milestone, with invested funds surpassing \$3 million. Total grants distributed since inception now exceed \$7.8 million. We are immensely grateful to our donors and to Craigs Investment Partners for their ongoing support in helping us reach these milestones.

Support for Northland's hospitals remains a cornerstone of our work through Health Fund PLUS, our partnership with Health NZ Te Whatu Ora Te Tai Tokerau. In 2024–25, we continued this strong partnership, raising funds for extras that sit outside of government funding, and delivering grants, scholarships and equipment to healthcare workers and patients across Northland.

We are pleased to present this report with stories from individuals and organisations from across Northland, both donors who are giving back, and organisations who have received grants, and whose mahi is making a difference in the community.

To our staff, trustees, committee members, funders, supporters, donors and ambassadors, thank you for your continued commitment to Northland Community Foundation, and to building a brighter future for Te Tai Tokerau. Together, we are creating lasting change and making a meaningful difference in our communities, now and for generations to come.

Nāu te rourou, nāku te rourou, ka ora ai te iwi
With your food basket and my food basket, the people will thrive.



Sophie Lane
Chief Executive



Megan Wills
Chair

Our team, trustees and ambassadors

Staff: Sophie Lane | Jane Stearns | Jessie Manney | Mandy Garriock | Mae Lewis

Trustees: Season-Mary Downs | Megan Wills | Nicola Hartwell | Pip Zammit | JP Dignon | Moe Milne | Hal Harding

Ambassadors: Jane Scripps | Gareth Foster | Richie Guy | Brent Eastwood | Dianne Pennington | Richard Alspach

Who we are

Generous donors, thriving communities

Community Foundations run a well-proven model of philanthropy which has been growing across the world for over 100 years. They focus on a place and its people, strengthening communities from within. They are local, independent and not-for-profit. Community Foundations provide essential philanthropic infrastructure enabling communities to thrive.

Northland Community Foundation

At Northland Community Foundation, we are passionate about growing generosity across Te Tai Tokerau Northland. Since our founding in 2004, we have been connecting generous donors with meaningful causes, creating a sustainable legacy for our region.

We provide a trusted framework for individuals, families, businesses, and organisations to support the charities and community projects they care about most. By investing donations responsibly, we make sure that every gift continues to make a difference, forever.

As one of 18 Community Foundations across Aotearoa New Zealand, we are proud to be part of the Community Foundations of Aotearoa New Zealand (CFANZ) network. This connection allows us to bring global best practices to the heart of Northland, while focusing on the unique needs of our local communities.

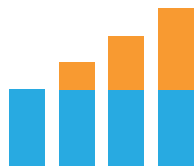
With your support, we can help Northland thrive – today, tomorrow, and for generations to come.



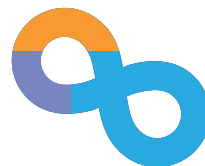
How does a Community Foundation work?



YOUR GIFT



IS INVESTED AND GROWN



AND THE ONGOING INCOME EARNED



GOES TO THE LOCAL CAUSES YOU LOVE.

Look how far we've come

2004	Northland Community Foundation is established by a group of passionate Northlanders
2008	The Foundation begins a partnership with The Tindall Foundation as a Local Allocation Committee
2010	Launch of Project Promise – the campaign to raise \$3M in 3 years to build a cancer treatment centre at Whangārei Hospital
2014	On 7th November, the Jim Carney Cancer Treatment Centre is officially opened
2015	Our partnership with The Tindall Foundation (TTF) is strengthened as we become a Local Donation Manager – delivering TTF funding throughout Northland
2019	Invested Funds hit \$1M
2024	The Foundation celebrates its 20-year anniversary as invested funds reach \$2M
2025	Invested Funds exceed \$3M. The Foundation launches a new website

The year at a glance

FUNDS



\$3,145,561
funds invested



\$15,235,000
committed bequests



new funds established
bringing the total to **35**

TEAM

5

Number of staff

1.63

Full Time Equivalent
(FTE)

25

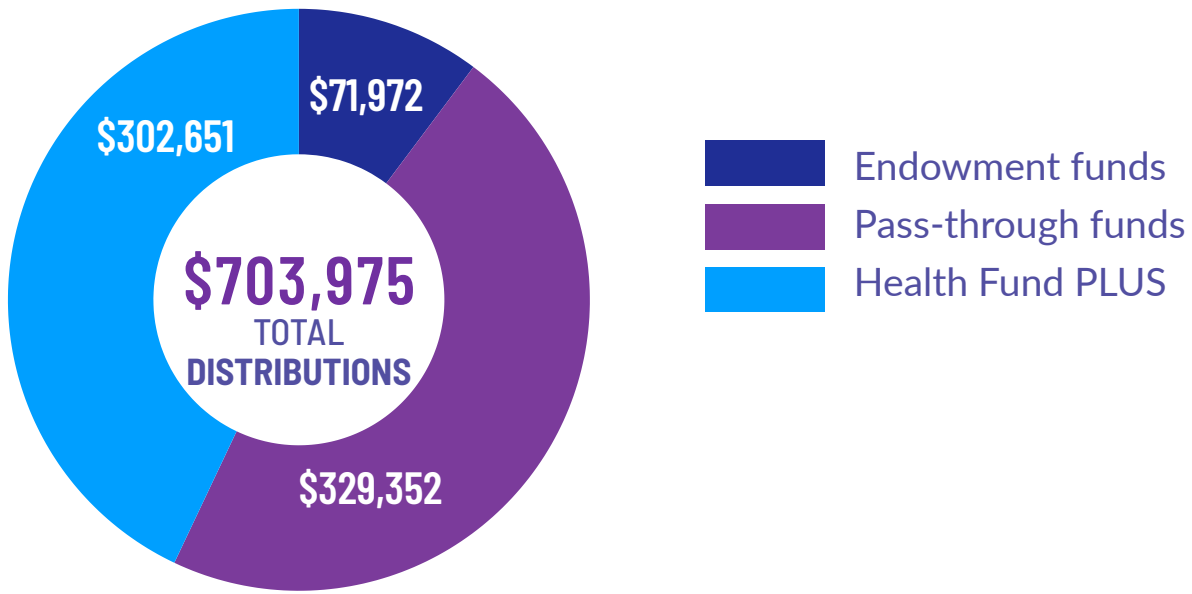
Volunteers

920

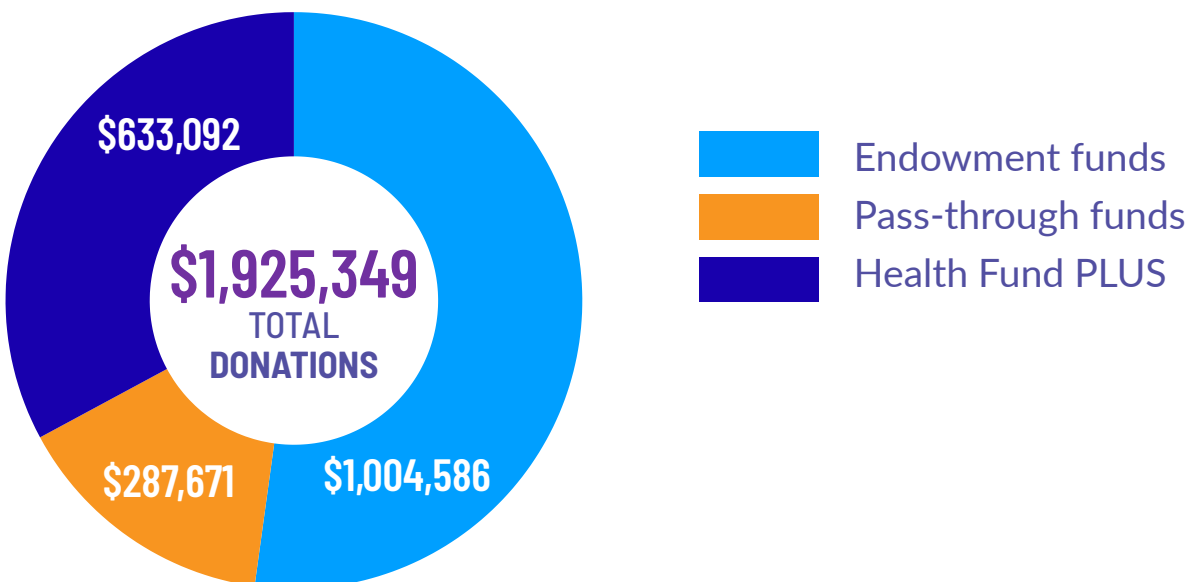
Estimated volunteer
hours

The year at a glance

DISTRIBUTIONS



DONATIONS



12.26%

investment return on
endowment funds

Paying It Forward

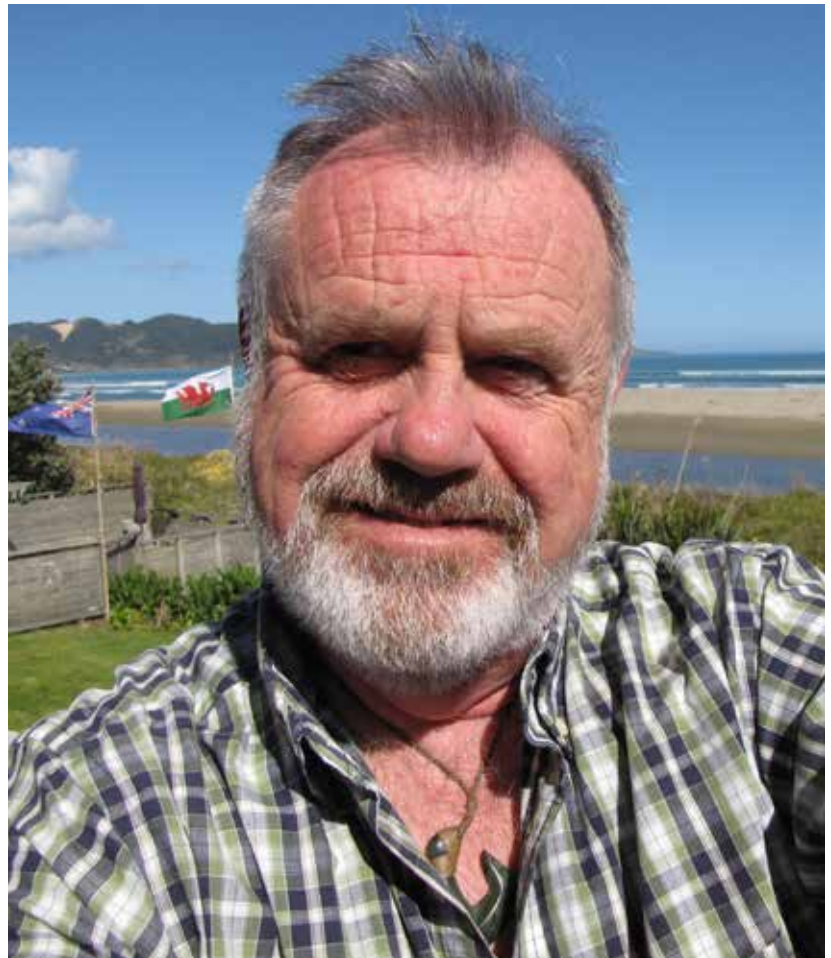


Lotto Win Becomes A Lasting Legacy

What would you do if you won Lotto? Many of us dream of what we'd do, which is just what happened to Lyall when he found himself with an unexpected windfall from a Lotto Strike ticket. After putting aside some for himself, Lyall, a local Whangārei resident, quickly decided to give away the rest and set about looking for a charity who could help.

It can be hard to give well and to find the best place to give a donation with a lasting impact towards a particular cause, so Lyall took to google to do some research.

He explained, "I was looking for charities in Northland, and I found the Northland Community Foundation. Then I was chatting with a friend who mentioned the Foundation, and gave very positive feedback, which gave me the confidence to reach out". After reading through the list of endowment funds, Lyall realised he could establish his own fund which would contribute to the cause he chose - forever.



He said, "The gift was given to me, so I'm paying it forward. I like the idea that it will be there forever, and grow over time". Lyall's gift will establish the Northland Rainbow Community Fund, which will distribute to charities and groups working to support the rainbow community in Northland. His gift will live on forever as an endowment fund managed by the Foundation and invested with Craigs Investment Partners. Each year, the interest earned from the Fund will be given back to the community.

Lyall told the Foundation about why he decided to give back to the Rainbow community, saying: "I grew up prior to the Homosexual Law Reform Act of 1986 and it always felt like society thought there was something wrong with who I was. Despite the Act, roughly 40 years later there are still people in the Rainbow community who struggle to be accepted. Now in 2025 I have been given the opportunity to pay forward a gift, and I've chosen to do so with the help of Northland Community Foundation, by establishing the Northland Rainbow Community Fund."

Thanks to Lyall's generosity, this Fund will help improve tolerance, inclusion, and support within the Rainbow community in Northland, helping the community continue their journey of acceptance and joy in celebrating who they are.



Local Legacy Lives on



Local Legacy Lives on with \$1m Gift to Puketī Forest Trust

Judy Beer, a well-known Kerikeri real estate pioneer and philanthropist, has left a lasting legacy to Northland following her recent passing.

Originally from Southland, Judy's life took her around the world, but it was in Northland that she eventually settled down to the region's natural beauty and sense of community. After working as a teacher, Judy pivoted to a long and successful career in real estate, founding The Professionals real estate agency, helping many families in the Kerikeri area into their first home.

In retirement, Judy found meaning in volunteering, spending countless hours helping at the SPCA, and teaching bridge at the local bridge club. When Judy updated her will, it was a conversation with her lawyer, and friends of hers, that helped her think about giving back beyond volunteering. Judy wanted to give something that would be enduring and decided to leave a gift in her will to Puketī Forest Trust.

A friend of Judy's shared that "Judy considered the work of the Puketī Forest Trust to be so important and close to her heart that she wanted to contribute what she could to it, but she also wanted it to be a long term gift".

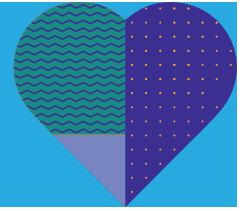
Judy's generous gift of \$1 million will be used to establish the Judy Beer Fund, for the benefit of the Puketī Forest Trust. Her bequest will help protect and restore the forest for generations to come. The Fund will be managed by Northland Community Foundation, and invested with Craigs Investment Partners to provide annual income and growth. The gift will exist in perpetuity, with the income from the interest earned each year going back to Puketī Forest Trust.

"Judy's contribution is a powerful reminder of what one person's generosity can achieve," said Gary Bramley, founding trustee of Puketī Forest Trust. "Her gift will support long-term conservation in a way that honours her values and love for the natural world."



Impact Stories

Northland Community Foundation



In our 2025 annual funding round we awarded 22 grants to recipients across Te Tai Tokerau including:

Ahipara School

Anxiety New Zealand Trust

Dargaville Bridge Club Incorporated

Dress for Success Northland Inc

Far North Resilient Communities

Charitable Trust

Fresh Start 20/20 Inc

Grandparents Raising Grandchildren

Jigsaw North Manaaki Whanau

Kaitaia Peoples Centre Nga Hoa Awhina Inc.

Maungaturoto Resident's Association

Mid North Budgeting Services Trust

Momentum Charitable Trust

Northland College Teen Parent Unit

Our Kerikeri Community Charitable Trust

Rainbow Youth Incorporated

Regent Community Trust

Rongopai House Community Trust

Ruawai Community Sports Club

Te Whai Community Trust

Mangawhai

The Early Years Hub Trust

Volunteering Northland

Whakaora Kai Food Rescue

Northland Limited

Restoring a legacy at Te Uri o Hina Marae

Te Uri O Hina Marae, nestled between Ahipara and Kaitaia, has undergone extensive restoration in the past year, preserving important cultural heritage through the restoration of the external carvings. The restoration project, in part funded by Tindall Foundation Funding, administered by Northland Community Foundation, ensures that the cultural integrity and longevity of the marae is protected for future generations.

The whakairo (traditional carvings) were originally created under the guidance of master carver Hekenukumai Puhipi (Sir Hector Busby) and tell the story of the marae's identity and history.

The project included a series of wānanga, and extensive whānau and hapū consultation during the design development process. James Watkinson, marae chairperson, explained "We approached these stages through an inclusive and tikanga-based engagement framework, allowing whānau voices and aspirations to meaningfully inform the direction of the project."



The project helped to increase confidence, capability and a sense of ownership in marae development issues. Watkinson said "Engagement in the restoration process has provided opportunities for intergenerational connection, knowledge sharing, and reconnection to the marae, which has positively influenced whānau wellbeing by strengthening whanaungatanga and fostering collective purpose."

Funding from the Tindall Foundation helped cover part of the costs of the restoration project. Through participation in this project, local whānau are building skills that will support the marae well into the future, reinforcing cultural identity, cohesion, and wellbeing across the wider community.

Building stronger communities in Northern Wairoa

The Hughes Trust Fund came from a bequest from the will of Bill Hughes, a former Deputy Mayor of Dargaville and President of Dargaville Rotary. In 2019, Dargaville Rotary club transferred the fund to Northland Community Foundation to be managed as an endowment fund, with the club continuing to deliver the annual interest as a grant to the community, as they had been doing for many years. Six years after the initial transfer of \$69,412, the original value of the trust has increased by 11.2%. In addition, the Fund has given out \$10,700 in grants.

These annual disbursements are paid out to the Dargaville Rotary Club who distribute them for charitable purpose within the Northern Wairoa region, as set out in the original intent of the Trust Fund. In the past year, grants from the Dargaville Rotary Club have gone out to many local organisations including the Dargaville Menzshed to purchase a router with stencils to create quality signage, Kaipara Heritage Machinery for landscaping supplies, and the Northern Wairoa Māori, Maritime and Pioneer Museum Society to purchase oral history recording equipment.

Baylys Beach Society also received a grant to paint a mural on a reconstructed toilet block, the Dargaville Dalmatian Cultural Club received a grant to help restore and re-mount historic photographs, and Wednesday Crafts received a grant to purchase craft materials.

By having the Hughes Trust invested with the Foundation, the original gift from Bill Hughes continues to grow over time, while creating a permanent funding stream for charitable purposes in Northern Wairoa.

Brian Burnett, from the Dargaville Rotary Club said, "It has been great having the Foundation take care of the Trust Fund, so we can focus on projects that strengthen Northern Wairoa and support the people who give their time and energy to our community."



Te Awatea – A New Day, A New Dawn For Mangawhai

Mangawhai is one of the fastest growing communities in New Zealand, but as it grows, so too does the pressure on those who face barriers to accessing services. Te Whai Community Trust is working to make sure that 'no one gets left behind, while Mangawhai gets ahead'. The Trust provides emergency food parcels, wellbeing support and coaching, social support for older people, and parenting support among other services.

The Trust also runs Te Awatea, a 10 week wellbeing programme designed to help people strengthen their wellbeing and build resilience in everyday life. It has been running in the community several times a year, for over 5 years. The course uses elements of neuroscience, behaviour change, neurodiversity, conflict resolution, parenting and communication skills and is trauma informed. A grant from the Tindall Foundation Whānau Fund, administered by Northland Community Foundation, has helped Te Whai Community Trust cover the cost of running the course in 2025.

Te Awatea is carefully facilitated to allow people to take part without needing to share their life story or difficulties. Participants in the course spoke about being better equipped with practical tools to help manage daily life and relationships, and described feeling calmer, more hopeful and better able to manage stress and challenges. Participants also reported health changes in their daily habits, improved emotional regulation and increased self-confidence as well as positive changes in relationships and parenting confidence. One participant shared, "I feel more hopeful and more positive about my life and where I am on my journey. Things have really changed around me" and another added "I've made a huge number of small steps in many areas of my life since starting this course. I'm really proud of how far I have come."



Carol Syron, Te Awatea Facilitator and Wellbeing Coach

The course highlights how a localised approach can make a difference in the lives of those in our community who may be struggling to navigate challenges on their own. Te Awatea creates a safe space for connection and lasting change, ensuring that as Mangawhai continues to grow, the wellbeing of its people grows too, strengthening individuals, whānau and the wider community.

Improving Emergency Readiness Across Northland

A grant from our Northland Emergency Response Fund enabled Volunteering Northland to deliver first aid courses to Community Response Groups in 2025. The Fund, which received a large donation from Infratil and Morrison to help get it started, is now helping strengthen Northland communities to be better prepared for emergencies.

The recent grant allowed Volunteering Northland to run an 'Essential First Aid' course for 60 volunteers from Community Response Groups across Northland.

These groups, run by local volunteers, are responsible for supporting communities during emergencies by providing immediate help and welfare support, working closely with agencies such as Civil Defence and local government.

The Community Response Groups also received first aid kits that were tailored to their training session. Weather events over the last few years have highlighted the need for rural and isolated communities to be well-prepared and well-equipped so that they are able to respond effectively during natural disasters.

Nataly Cardoso from Volunteering Northland said "the first aid courses helped to strengthen the relationship between Volunteering Northland, the Community Response Groups and Civil Defence. Building stronger relationships in our communities is of vital importance".

Health Fund PLUS



Since 2006, Northland Community Foundation has supported Health NZ | Te Whatu Ora Te Tai Tokerau (formerly Northland DHB) to provide the optional extras that make a difference for patients, their whānau, and healthcare staff – enhancing hospital spaces, developing the workforce, and funding initiatives that improve the overall patient experience.

With donations totaling \$633,092 and grant distributions of \$302,651 in 2024-25, we are grateful for the support of our donors and the hospital staff that make a difference for the patients, visitors and staff at Northland's hospitals. This year, \$300,000 of the funds raised are tagged funds for a future project which is in the pipeline for Health Fund PLUS.

In 2024/2025, Health Fund PLUS helped fund the following initiatives:

Kaitaia Hospital Staff Gym Upgrade
Educational flashcards for patients with diabetes
STAH Team Awards Evening
Chemotherapy chair for Kaitaia Hospital
Attendance at the Paediatric Conference in Auckland
Tablets for children having casts removed

Outstanding staff recognition program
Venue hire for community Parkinson's support group
Social event for Kaitaia Hospital staff
Equipment for He Piripono Waiū Milk Bank
Cupboard for Child Health Centre pātaka kai
Christmas gift for staff at Bay of Islands Hospital

Another leaf on the wall



Anne and Grahame Richards placing a leaf on the pohutukawa tree at the Jim Carney Cancer Treatment Centre

In 2025 our Pohutukawa tree at the Jim Carney Cancer Treatment Centre was busy growing new leaves. The Pohutukawa Donor Tree inside the Jim Carney Cancer Treatment Centre builds on our previously successful 'Buy a Brick' fundraising campaign, which helped the building and refurbishment of the Centre. Donations of all sizes are welcome, with donations of \$1000 or more being recognised with a personalised, engraved leaf that donors can place on the tree.

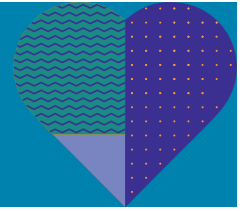
Local donors Anne and Grahame Richards, along with their two daughters, visited the Centre to place their second leaf on the tree. Both Anne and Grahame have received treatment at the Centre, and the family wanted to donate to say thank you for the care they received there.

Jane Stearns, Community Engagement Manager at Northland Community Foundation was with Anne and Grahame on the day and also placed leaves on behalf of others who had donated. "At the Foundation, we are very grateful for the support and contributions from the wider community to the work at the Jim Carney Cancer Treatment Centre", Jane shared.

Mary Monaghan, Associate Clinical Nurse Manager at the Centre, joined the Richards family and Jane for morning tea and shared an update about how donations have helped make a difference for patients receiving care. Mary shared that the Centre had recently purchased a new dishwasher for the staff kitchen. Donations were also used to buy vouchers to thank volunteer shuttle drivers who ferried patients from the temporary ward to the carpark during recent renovations to the Centre.

Impact Stories

Health Fund PLUS



New gym equipment improves staff health

Thanks to funding from Health Fund PLUS, the staff gym at Kaitaia Hospital has undergone an upgrade in 2025 with new modern, strength training equipment aimed at encouraging a healthier lifestyle amongst staff.

The initiative also aimed to enhance the experience of rural GPs and training Registrars that complete a 3-6 month rotation at Kaitaia Hospital.

The improvements to the gym align with the Hospital's "Healthy Workplace" policy, which aims to promote a healthy lifestyle amongst staff. New staff now receive a gym tour as part of staff orientation. The gym is also available before, during and after work, making it more accessible and convenient to use. The recent changes have positively impacted morale, with many staff expressing gratitude for the upgrades.

Following the installation of the new strength training equipment, the Hospital ran a health and wellness programme, with all participants losing weight and committing to a healthier, more active lifestyle.

Monique Morey, Registered Nurse at Kaitaia Hospital said, "since the upgrade, we have observed increased participation in gym use and we are committed to maintaining these facilities and promoting staff wellness to maintain these positive outcomes".

The staff expressed thanks and appreciation for the generous support of Health Fund PLUS donors, who helped make this happen.



Celebrating Northland's outstanding STAH Team

The second Scientific, Technical and Allied Health (STAH) Recognition Awards took place in September 2025 at Semenoff Stadium in Whangārei. The Scientific, Technical and Allied Health is a term for diverse healthcare professionals that provide direct patient care, diagnostic support and technical services to keep things running smoothly – we'd be lost without them!

To celebrate the STAH staff from across Northland, the Chief of Allied Health, Scientific and Technical, Hannah McCarrison, and her dedicated team hosted the awards event, made possible with funding from Health Fund PLUS. The occasion served as a chance to acknowledge quality improvement projects that have made a difference in care and highlight innovation taking place across the district. It was also a moment to celebrate and reward the staff for their contribution, which is key to a high level of patient care.



The awards attracted over 80 nominations across 10 award categories with the overall award for STAH Individual of the Year going to Elisa Thomas, who has served as Northland's sole cardiac physiologist. Elisa has demonstrated outstanding effort in the face of significant adversity to improve healthcare access and equitable outcomes for rural communities across Te Tai Tokerau. Her dedication to Northland's rural communities and critical role in the Cardiology Service are genuinely inspiring.

Hannah McCarrison said, "We'd like to give a heartfelt acknowledgement to the organising team for delivering a truly outstanding celebration of the region's exceptional staff. It was a privilege for attendees to be part of such a meaningful occasion. We would also like to thank Health Fund PLUS for the generous grant which helped this event take place".

Elisa Thomas who won the STAH Individual of the Year award

Bright Screens, Brighter Smiles: Tablets Making a Difference in Ortho Outpatients

Thanks to a grant from Health Fund PLUS, the plaster room at Ortho Outpatients now has two Samsung tablets that are making a big difference for young patients.

The devices are being used as a gentle distraction for children during cast changes and dressing procedures, helping to ease anxiety and bring a little joy to what can be a stressful moment. They've also proven incredibly helpful for siblings who accompany their brother or sister, giving parents the space to focus on the child receiving care.

With access to the hospital's internet, the tablets have been loaded with child-friendly apps and YouTube Kids, all safely locked down with parental controls. Thanks to the thoughtful donation of colourful covers from our ortho outpatients' staff, the tablets are not only protected, they're also fun and inviting for tamariki.



Good News for Type 1 Diabetes Patients in Northland

In October 2024, Type 1 diabetes mellitus patients in Northland became eligible for funding for insulin pumps and glucose-monitoring sensors. This development will greatly enhance the quality of life for many individuals managing this chronic condition. To ensure patients can make the most of these advanced technologies, diabetes dietitians under the diabetes service in Northland have taken on the crucial role of providing education and assessment.

Sometimes maths and health literacy are a challenge and in recognising this barrier, the diabetes service applied for funding from Health Fund PLUS to acquire food models that mimic real food and real portions. These models have proven to be an invaluable tool in the education process, helping patients better understand portion sizes and carbohydrate content in a tangible and relatable way.

Workshops sessions using these food models have achieved the desired outcomes, by empowering patients with the knowledge and skills they need to manage their diabetes effectively. Patients are now better equipped to take control of their health, leading to improved outcomes and a higher quality of life. This initiative is a testament to the dedication and ingenuity of the diabetes service team, who continue to strive for excellence in patient care and education.



Partnership Stories



Northland Community Foundation Partners with Dodoland to Grow a Brighter Future

In October 2025 we were excited to launch our partnership with Dodoland, a Whangārei based company known for their EUGY toys - eco-friendly, 3D puzzles featuring different animals from around the world.

For each Tui from the EUGY collection, Dodoland will donate a percentage of the profit to Northland Community Foundation which will help fund our operations, and enable us to grow our reach and support for communities across Te Tai Tokerau.

In addition, Dodoland will donate 200 EUGY TuIs per year to the Children's Ward at Whangārei Hospital, to help make our tamariki's stay in hospital more enjoyable.

"We're excited to work with a partner that shares our values and sees the power in giving back," says Sophie Lane, CE of the Northland Community Foundation. "Dodoland's values of working to improve our environment, nature, and our children's futures align with our goal to improve the future of Northland's environment and people. Together, we can show that even small purchases can make a difference."

Supporting our reach across Northland



We are grateful to Northland Toyota for their ongoing generous sponsorship of a hybrid lease vehicle. This support has enabled our team to connect more easily with donors and community groups across the region, strengthening relationships and expanding our reach. Their commitment not only helps us carry out our work more effectively, but also reflects a shared dedication to environmental sustainability.

Ngā mihi nui ki a koutou

On behalf of the Northland Community Foundation, we extend our heartfelt gratitude to our community, donors, trustees, ambassadors, volunteers, and supporters. Your generosity and commitment continue to drive our mission to inspire giving and enhance the well-being of Te Tai Tokerau, Northland.

To all of our donors, fund holders, local champions, volunteers, and supporters: thank you for your belief in building a stronger community.

Our work as a Foundation is made possible by the steadfast support of numerous organisations and individuals. We extend our heartfelt thanks to:



Health New Zealand | Te Whatu Ora in Te Tai Tokerau: For investing in operational funding, enabling us to manage their charitable donations and support health-related initiatives across the region.



The Tindall Foundation: For working with us to distribute over \$90,000 annually to impactful causes and charities in Northland.



Northland Toyota: For sponsoring a free hybrid lease vehicle, facilitating our outreach to donors and community groups, and promoting environmental sustainability.



Craigs Investment Partners: For managing our funds at a special reduced rate, helping us maximize the impact of every dollar entrusted to us.



NZME: For offering discounted advertising, enhancing our visibility and engagement within the community.



Community Foundations of Aotearoa New Zealand: For supporting us and providing resources that help us to make a lasting difference in our local communities.



Infratil and Morrison: for their donation to the Northland Emergency Response Fund.



Dodoland: For donating Euky toys to the Whangārei Children's Ward, and for donating 10% of profits from the Tui Euky to help fund our operations.



Contact Energy: For sponsoring the phone plans for team members at the Foundation.



Pub Charity: For a grant which covered the costs of our 2025 website redevelopment.



Northland Community Foundation

Get in touch

We invite you to connect with us to learn more, get involved,
or start your own fund:

Email: info@northlandcommunityfoundation.org.nz

Website: northlandcommunityfoundation.org.nz

Phone:

Sophie Lane – Chief Executive: 020 4139 8518

Jane Stearns – Donations: 021 558 224

Jessie Manney – Grants: 022 491 0757

Postal Address: Northland Community Foundation

PO Box 10011, Te Mai, Whangārei 0143

Together, we
are forging
brighter futures
through giving.