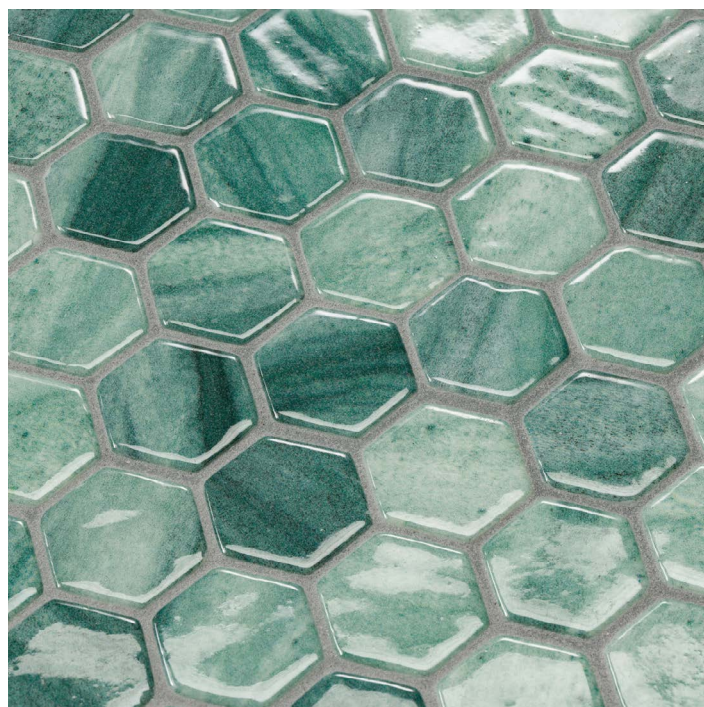
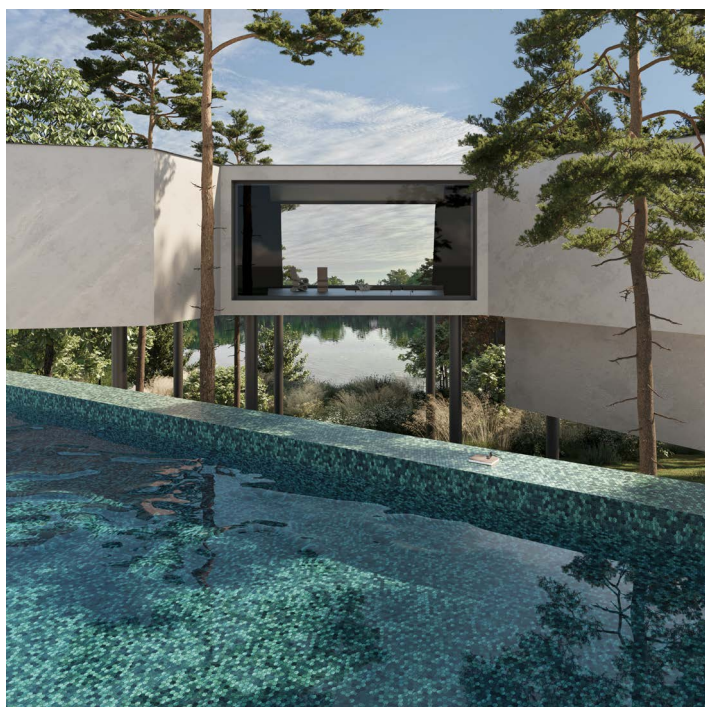


Olivine

GEMMA COLLECTION



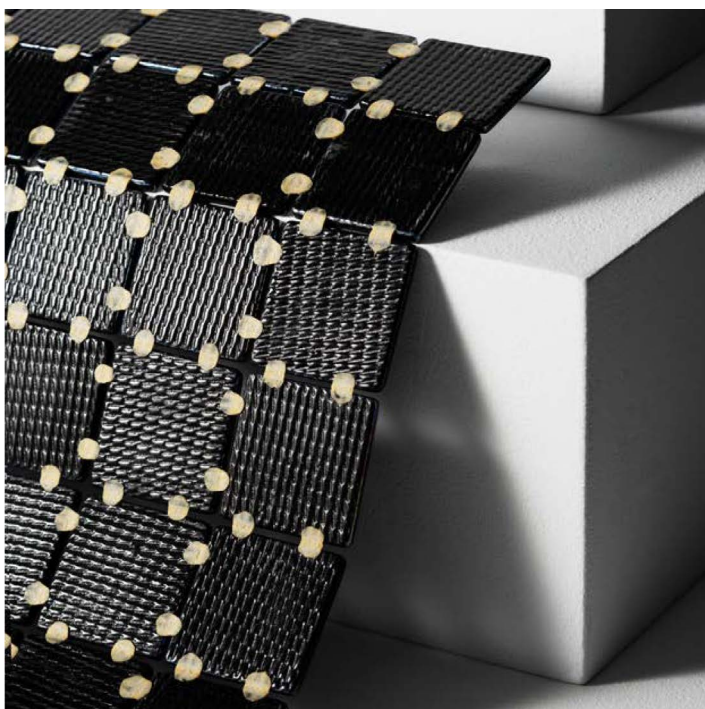
Product Description

Made in Spain from 100% recycled glass, our glass mosaics are fired and manufactured into sheet formats suitable for wall and floor applications, including fully submerged conditions. They are ideal for both interior and exterior areas such as paving, swimming pools, wet zones, terraces, homes, hotels, and offices. Suitable for medium to high foot traffic, they are compatible with saline chlorination systems and resistant to standard chemical cleaning agents. For enhanced slip resistance, the use of SAFE (anti-slip) references is recommended. For adhesive, grout, and final cleaning recommendations, please contact Europe Imports. Installation guidelines are available on our website and included with product delivery.

Available formats & finishes

33.4x33.4mm
gloss

25mm
gloss



Jointpoint System

Managable, adaptable, easy cut, visual control

Over 92% of adhesion area available

Surpasses requirements of AS 3958

JointPoint is inert and will not swell

Controlled placement and joints

Easy to handle and install for tilers

Tilers No. 1 preferred tile for pools

Most recommended & trusted system

Invented and developed by ezarri

Test Analysis

Water absorption	UNE EN ISO 10545-3	Result: E=0,1%
Scratch resistance	UNE EN ISO 10545-7	Classification: PEI = 4
Stain resistance	UNE EN ISO 10545-14	Classification: 1-5-5
Scratch hardness	UNE 67101 (escala de Mohs)	Class 7
Resistance to freezing	UNE EN ISO 10545-12	Resistant
Chemical resistance	UNE EN ISO 10545-13	Classification: A

Packaging

Format	Thickness	Sheet(cm)	mosaic per sheet	sheets per carton	m ² / carton	m ² / pallet	kg / m ²	kg / pallet	pallet
25 mm	4,8 mm	31, 2 × 49, 5	12 ×19	13	2	96	9, 4	902	66,5 × 106 × 100 cm