



Presents

2025 Blokart East Coast Championships



Notice of Race (NOR)

Former Loring Air Force Base, Limestone, Maine

October 8-12, 2025



1. Organizing Authority

1.1 The New England Land Sailors (NELS) club under the national North American Blokart Sailing Association (NABSA) is the event organizing authority.

1.2 Specific Race Committee (RC) Principal Race Officials (PROs) will govern the daily racing activities and make all decisions on racing courses, timing, starting, and scoring.

2. Rules

2.1 Racing shall be governed by the rules published by the International Blokart Racing Association (IBRA) Rules, Edition 9, with modifications published in the Sailing Instructions, announced at the Morning Skippers Meeting, and/or by Announcement at the Starting Line before the dial-up begins. These rules can be found here:

<https://blokartworlds.com/wp-content/uploads/2023/10/IBRA-Rules-Edition-9-Final.pdf>

3. Eligibility and Entry

3.1 Competitors shall register in advance by completing an event application form that can be found as the last page of this document.

3.2 Competitors must be members of NABSA for insurance purposes. Membership for just \$35/yr can be attained via this website: <https://www.nabsa.org/membership-benefits/>

3.2 Entries will be broken down into individual divisions based on how many competitors are received with the goal of having at least seven competitors in each division. The order by which additional divisions will be formed will be the following:

- GOLD (most experienced) and SILVER Fleets
- Heavyweight and Lightweight Divisions (approx. ½ of the fleet in each group), or
- Heavyweight and Middleweight and Lightweight division (approx. 1/3 in each), or
- Specific weight classes per the Blokart rules
 - Light weights, competitors less than 154lbs
 - Middle weights, competitors 154lbs and up to 182lbs
 - Heavy weights, competitors 182lbs and up to 209lbs
 - Super heavyweights, competitors 209lbs and over

Competitor weigh-ins will be conducted at Check-In (no shoes or coats)

The Silver fleet is defined as “sailors that have never raced before OR are still learning the proper sailing angles and tactics OR are just not into the gold fleet competitive nature, but enjoy racing”. Registering for Silver fleet is voluntary (sailors may enter Gold if they feel they can compete). Silver fleet is comprised of any kart configuration (Production or Performance) with any options since the competition outcome is predominantly determined by sailor skill vs kart setup. If there are 12+ karts signed up for Silver, they would be broken down into LIGHT and HEAVY weights, and all start together. If there are 18+ karts, we would also add MIDDLE as a division. PRO’s will run an additional fleet of Silver sailors using the same course areas as gold sailors, but perhaps a shorter course (6 mins or just 1 lap) depending on wind speed to keep things moving and get more races in overall.

4. Fees

4.1 The entry fee is \$100/competitor for applications submitted by SEP 15, 2025 and \$125/competitor for applications submitted after SEP 15, 2025. Youth sailors (<19yrs) can enter for \$80/competitor for applications submitted by SEP 15, 2025 and \$100/competitor for applications submitted after SEP 15, 2025.

4.2 Non-racing sailors are welcome to participate and only need to sign a waiver (end of this document) and we ask that a discretionary donation be made. Non-racing sailors will be advised where the race courses are each day and they must sail away from the racing areas. There are abundant areas for fun sailing concurrently with racing with no issues.

4.3 Payments may be made by check, or by PayPal (bazingalussier@gmail.com), or Venmo (@David-Lussier-17), but the registration/waiver form must also be completed and sent to the mailing address or email shown on the registration form.

4.4 We will have a limited number of karts for hire (first come first served) for the event with two options. We will have karts with no sails/masts (chassis only) for \$300 and karts with sails/masts for \$400. Blokart parts and dealers will be on-site with limited inventory. Contact BB for details on kart rentals for this event at CCLSAILORS@GMAIL.COM.

5. Schedule

5.1 The below schedule is the basic plan of events, subject to change with the weather:

- **Wednesday, October 8:**
 - Check-In/Boat Setup & Inspections/Open Sailing All Day
- **Thursday, October 9:**
 - Check-In/Boat Setup & Inspections/Open Sailing Morning
 - Skippers Meeting 10AM
 - Long Course Racing 11AM-4PM
 - Welcome dinner at Northern Maine Brewing Company 6:30PM
- **Friday, October 10:**
 - Skippers Meeting 9AM
 - Long Course Racing 10AM-12PM
 - Long/Short Course Racing 1PM-4PM
 - Open Sailing/Venue Circumnavigation 4PM-5PM
 - Dark n' Stormy Happy Hour at Hangar 4:30PM
 - Social Dinner at Lime Rock Golf Club 6:30PM
- **Saturday, October 11:**
 - Skippers Meeting 9AM
 - Racing (Long/Close Courses) 9:30AM-12PM
 - Racing (Close Courses w/commentator) 1PM-4PM
 - Limestone Octoberfest Events 11AM-4PM
 - ✓ Food Trucks/Beer Garden
 - ✓ Shadow Rides/Karts Photo Ops
 - ✓ Cornhole/Pickleball
 - ✓ Wildlife Refuge/Museum Tours
- **Sunday, October 12:**
 - Skippers Meeting 9AM
 - Racing (make-up if necessary) 10AM-12PM
 - STEM Student Visit/Shadow Rides/RC Demo TBD
 - Blokart GPS Art Sailing TBD

6. Venue

6.1 The venue for this event is the former Loring Air Force Base in Limestone, Maine. The facility was an active AFB that is now closed to military operations and has been reserved exclusively for this event by New England Land Sailors.

6.2 The base for the Blokart event will be the fighter jet hangar located at the southernmost building of the runways. This hangar will be available for participants to use to set up and store Blokarts during the event including overnight storage.

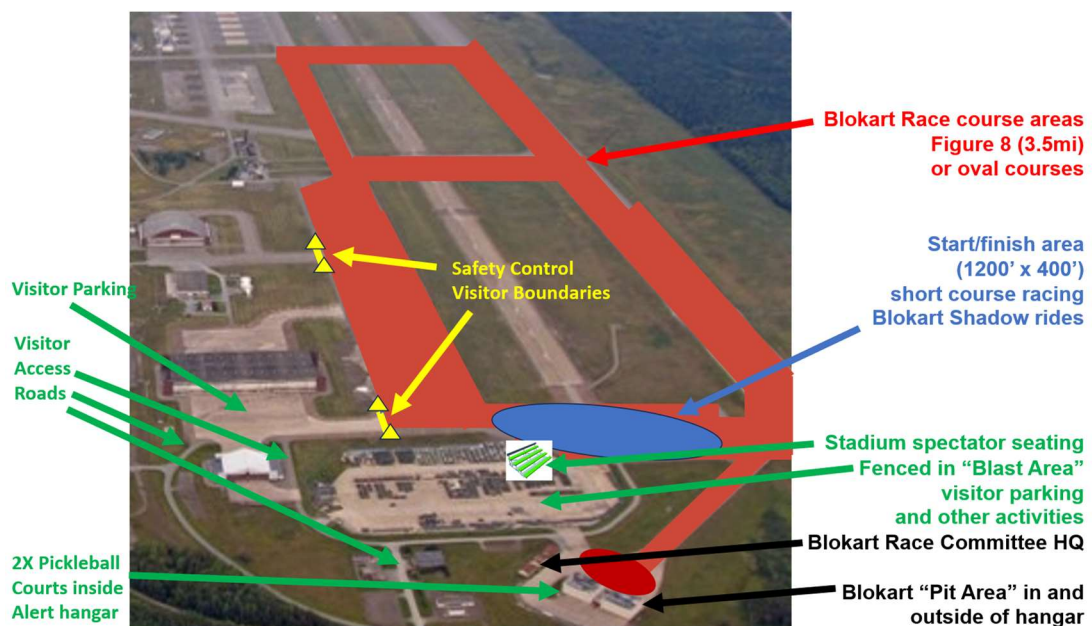
6.3 The base hangar has a nearby building with bathroom facilities, but there are no food provisions at the venue and all participants should bring their own food/drink to each day's activities. There will be social dinner reservations made for the group on Thursday and Friday evenings with participants ordering off the menus and self-pay.

6.4 The Limestone Chamber of Commerce (CoC) is planning an Octoberfest event concurrent with our Blokart event at the venue on Saturday. The Octoberfest event will arrange for their visitors to park and view the Blokart racing from the fenced in and coned/taped off areas to the south and west areas, respectively, of the Blokart racing dial-up area.

The Octoberfest event will feature the following attributes:

- ✓ Food Trucks
- ✓ Beer Garden (Maine Brewing)
- ✓ Limited stadium seating for visitors to watch Blokart racing
- ✓ A commentator and PA system for close course Blokart racing in the dial-up area
- ✓ Blokart Shadow rides for visitors
- ✓ Blokart photo ops
- ✓ Cornhole and Pickleball games

See the diagram below for a rough layout of the two events combined and their areas.

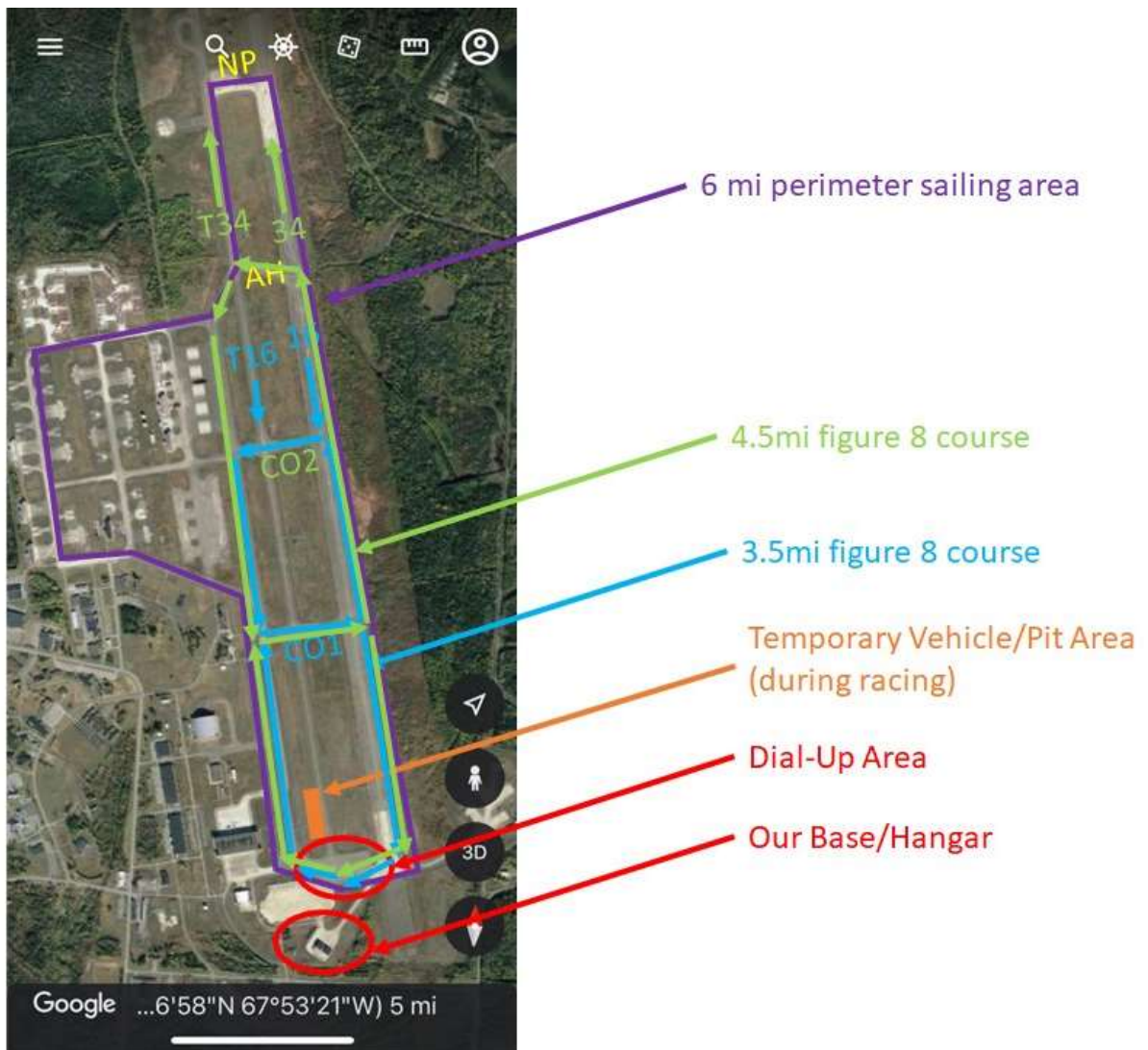


6.5 Overnight camping in RVs is permitted at the venue, but they must be fully self-contained (no pump out, water, or electrical services). There is water to fill your tanks at the Race Committee HQ (bring a hose). It is tested regularly but consume at your own discretion.

6.6 For directions to get to the venue, the following is provided:

Drive north on I-95 until you are above the latitude of both Quebec and Prince Edward Island. At Caribou take a left off US Rt. 1 and take Rt. 89 towards Limestone. In a few miles you will pass an entrance to Loring Commerce Center on your left with a gas station on the corner. It is best not to enter here, but carry on another couple of miles to the four corners with the flashing light with Cote's Auto on the corner. Turn left here (heading north) at this flashing light. You will enter the base around a sharp left bend in the road. A bit further on, on the left, is a derelict building. Just there on the right is your turn. It's the first right you come to. Go up the hill, bear right at the top.

On the other hand, if you've been driving for what seems like forever and there is a sign for your destination (Loring Commerce Center), you could turn left there and enter the base about a mile down on the right. Go a short way until you come to Wienmann Rd. Take a right and take it all the way until the end. Turn right, take that to the end, turn left. Take that to the end and turn right. You are now at the beginning of the regatta. At the end of this road you'll see two hangars. Ours is the one on the left.



6.7 For competitors travelling by air, Boston (BOS) is the closest large international airport and is a 400mi drive to Caribou from Boston which takes ~6hrs to drive by car. Bangor has a small international airport and is 172mi drive to Caribou which takes ~3hrs by car.

7. Courses

7.1 The above graphic is provided as an overview of the venue. Specific courses will be selected by the RC PROs on each day of racing depending on weather conditions.

7.2 In general, racing will be conducted with starts in the vicinity of the base hangar, predominantly in the dial-up area shown. Some races will be “long courses” which would be ovals or figure 8 patters around the runways while some races will be “short courses” which will be smaller track racing within the large dial-up area.

7.3 It is the goal of the RC to setup courses such that there are no meetings of upwind and downwind boats on the same runway to minimize risk of collisions.

8. Series Format:

8.1 The racing event will consist of a minimum of six (6) races in each division, and it is the intent of the RC to conduct at least 10 races in each division.

8.2 Fun events such as open sailing, venue circumnavigation, poker run, and relay races may be organized during the event depending on the desires of the participants.

9. Scoring

9.1 Scoring shall be based on low point scoring using the rules in the IBRA Rules edition 9 Part H.

10. Penalties

10.1 Taking a penalty for a foul while racing is a one turn (full 360 including a tack and a gybe) requirement and must be done as soon as reasonable after the penalty and before finishing. A penalty is required for any port/starboard foul, mark rights fouls, hitting a mark, or other specific breeches of the class racing rules. Safety and good sportsmanship are priorities for this regatta.

10.2 Being OCS (over early) at the start may only be exonerated by restarting and NOT a penalty turn and no dipping back below the start line then back above is allowed. OCS exoneration requires rounding one end of the starting line then restarting from the pre-start side of the line, while keeping clear of any other karts racing.

11. Prizes and Sponsorship

11.1 Prizes for the top finishers in each division within each fleet will be given for racing events. Divisions will be established with the goal of having at least 7 karts/division.

12. Modifications to this Document

12.1 Any provision of this document may be altered in the Sailing Instructions, at the Morning Skippers Meeting, and/or by Announcement at the Starting Line before the dial-up begins.

13. Lodging Information

Lodging is available near the racing venue (the former Loring Air Force Base, now known as the Loring Commerce Center, Limestone, Maine). Participants are responsible for making their own reservations.

There are two primary lodging options nearby the venue, with the first one (Bunker Inn) right on the venue, although there are no dinner food options there. The Best Western Caribou Inn is a 15 minute drive to the venue and is more expensive, but has multiple dining options nearby for breakfast and dinner.

There are other smaller motels between Caribou and Limestone you may find on your own as well.

The Bunker Inn, 17 Virginia Place, Limestone, Maine, phone: (207) 325 6072. This is a former Air Force facility. It is the least expensive and closest to racing (1 mile). There are a limited number of single and double rooms available. Breakfast is available for an additional fee. Staying at this lodging would require driving to dinner.

<https://www.loringind.com/thebunkerinn/>

Quality Inn and Suites, 30 Access Highway, Caribou, Maine, phone: (207) 493 3311. This hotel is 8 miles to racing. It has guest rooms and suites, and offers a free hot breakfast. It is near several stores in Caribou.

Best Western Caribou Inn, 19 Main Street, Caribou, Maine, phone: (207) 498 3733 and toll free number is 800 780 7234.. This hotel is 12.5 miles from racing. It has single and double rooms. They have a restaurant and bar/lounge on-site, and this hotel is across street from a brew pub with excellent food and near several stores in Caribou.

https://www.bestwestern.com/content/best-western/en_US/booking-path/hotel-details.20028.html

Russell's Motel, 357 Main Street, Caribou, Maine, phone: (207) 498 2567. This is a small motel and is 10.9 miles from racing. It has single and double. It is also near several stores in Caribou.

There are also several hotels in Presque Isle, Maine to the south, which is 22 miles from the sailing venue.

14. **Contacts**

For further event information please contact:

Event Chair: Dave Lussier, bazingalussier@gmail.com, 401.225.8463

RC Chair: Mike Dinning, mgdinning508@gmail.com, 617.899.6050

RC PRO: Nina Fleming, buggleblue@gmail.com

RC PRO: Deb Whitehorse, debwhitehorse@gmail.com

LORING BLOKART EVENT APPLICATION / WAIVER

New England Land Sailors

Participant Info:

First Name _____ Last Name _____

Address; Street _____ City _____

State _____ Zip Code _____ On Site Cell Phone # _____

DOB _____ Skipper Weight (lbs) _____ Sail Number _____

Classes (check one per row): Production Blokart _____ Performance Blokart _____
Silver Fleet _____ Gold Fleet (Advanced) _____

EMAIL ADDRESS _____

Fees:

\$100/entry if paid for by SEP 15, 2025 (postmarked) // \$125/entry if paid for after SEP 15, 2025
Send this entry form and payment to: Dave Lussier, 90 Duck Cove Lane, N. Kingstown, RI 02852
PayPal: bazingalussier@gmail.com Venmo: @David-Lussier-17

Emergency Contact Information:

Name _____

Relation _____ Phone/Cell# _____

NABSA membership is required to enter this event due to NABSA/Blokart insurance conditions.
Join NABSA here: <https://www.nabsa.org/membership-benefits/>
Individual Member \$35.00, Family \$50.00 (per calendar year)

ALL PARTICIPANTS MUST WEAR AN APPROVED HELMET. ALL PARTICIPANTS MUST ATTEND THE SKIPPERS MEETING AND SAFETY BRIEFING BEFORE SAILING. ALL BLOKART SAILORS MUST USE THEIR SEAT BELT WHEN SAILING AND PLEASE LAY DOWN YOUR BLOKART WHEN NOT SAILING.

ACKNOWLEDGE/SIGN:

WAIVER: Competitors participate in this event entirely at their own risk. The Organizing Authority will not accept any liability for material damage or personal injury or death sustained in conjunction with, prior to, during, or after the series. In signing this waiver I am stating that I have read it and understand it.

Signature / Participant: _____ Date: _____

Parent / Guardian: _____ Relationship: _____