

WI-FI MANUAL



Download

● Introduction to WI-FI Functions

This product is equipped with Wi-Fi[®] technology, allowing users to operate the air conditioner via WIFI.

In order to use this feature, the system must be connected to the internet through a local router and modem.

The correct APP must also be downloaded and installed on a mobile device.

- ※ Thank you for purchasing this product.
- ※ Please read this manual carefully and thoroughly before operating the unit.
- ※ Take care of this manual for future reference.

How to Download and Install the Control App

You can easily get the AUX Home Control APP on your phone or tablet by following one of these steps:

1. Search in the App Store:

If you have an Android phone or tablet (version 7.0 or higher) or an iPhone/iPad (iOS 12.0 or higher), go to the Google Play Store or Apple App Store and search for "AUX Home". Then, download and install the app.

2. Scan the QR Code:

You can also use your phone's camera or a QR code scanner app to scan the QR code shown in the manual (see Figure 1). This will take you directly to the download page for the app.



Setup

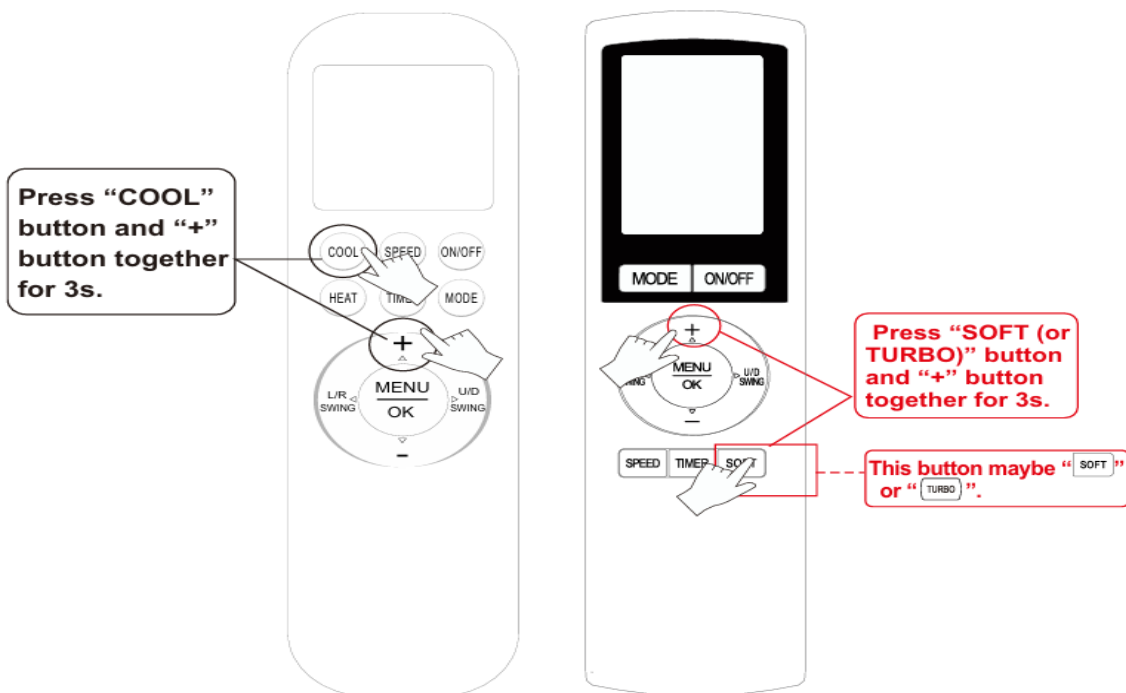


Important:

If any step is done incorrectly or fails, you will need to start over from Step 1 and reset the Wi-Fi module again.

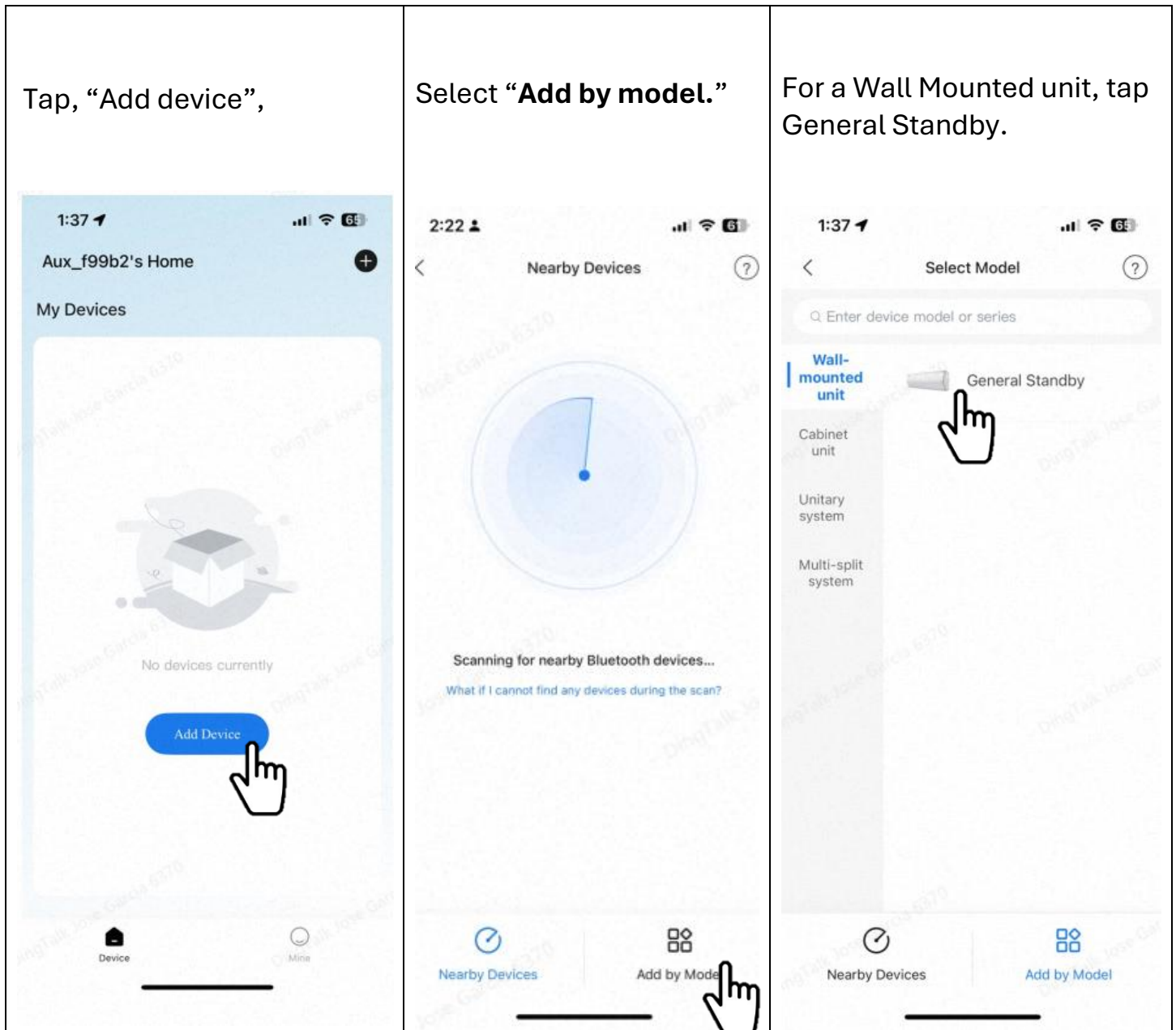
Step 1. Reset the WI-FI Module.

1. Turn the mini split on using the remote.
2. Press “COOL” (or “SOFT” or “TURBO”) and the “+” button at the same time for 3 seconds.
3. You should hear **eight beeps**, then after a 2-second pause, **two more beeps**.
This means the Wi-Fi reset is complete.



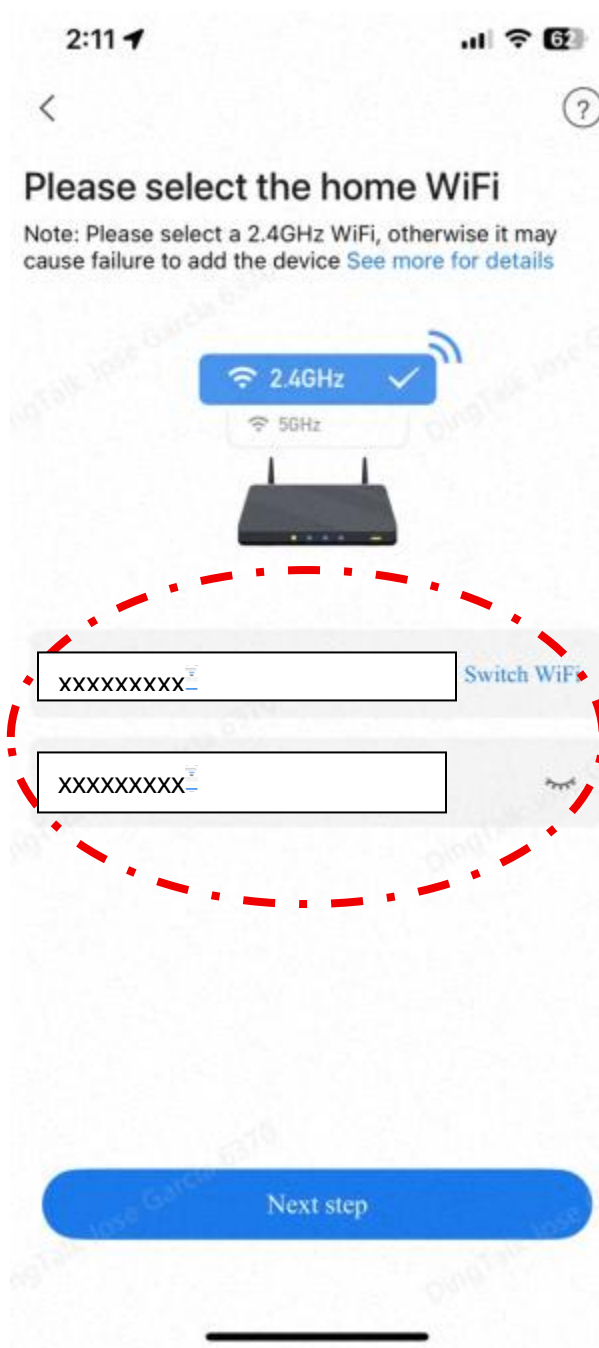
Step 2. Open the AUX Home APP.

1. Open the AUX Home APP.
2. Tap, “**Add device**”, then select “**Add by model**”.
3. Wall Mounted unit, General Standby.



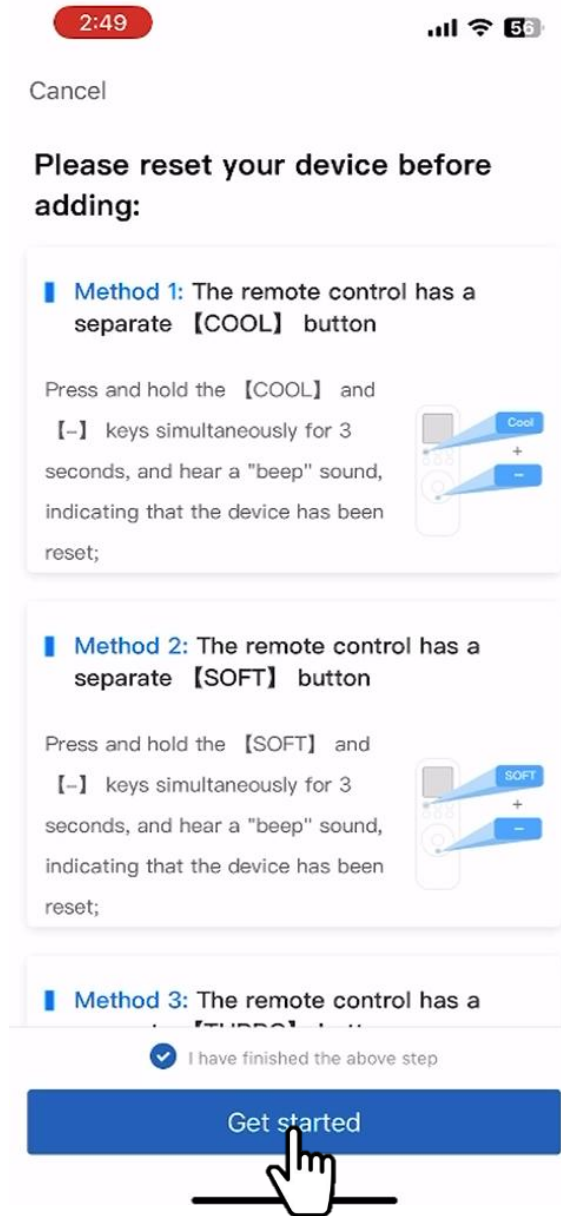
Step 3. Connect to your Home WI-Fi.

1. Choose your **home Wi-Fi network** and enter password.



2. Tap “APP Config”
3. Check the box that says, “I have finished the above step.”
4. Tap “Get started”

AUX WI-FI SETUP



Step 4. Your phone or tablet will pair.

1. Name your device.
2. Confirm.

AUX WI-FI SETUP



Congratulations. You can use the APP to control your Air Conditioning System!

