

ODC Daily Coaling Plan

30/07/2025

Geologist Contact: 0473 223 132



Location	Coal Type	Destination	Comments
T02	C_VU1_VU3	SP_O	
	C_VL1	VL Pad	DO not mine past RL95
T03	C_VU1_VU3	SP_Q	
	C_VL1	VL Pad	
	C_LL1	SP_B	Thin seam – take care when mining Tip Stockpile South to North
	C_LL2T_LL2B	SP_G	
	C_LL3B	SP_R	Thin seam – take care when mining. Stockpiled separately on R (western side)
T04	C_LL1	SP_B	Thin seam – take care when mining
	C_LL2T_LL2B	SP_P	
	C_LL3B	SP_M	
	C_VU1_VU3	SP_C	
	C_VL1	VL_PAD	
T05 Ramp 6 De-Stack	C_LL3B	SP_F	
	C_LL2T_LL2B	SP_D	
	C_VU1_VU3	SP_A	
T05	C_LL1	SP_B	Thin seam – take care when mining
	C_LL2T_LL2B	SP_D	
	C_LL3B	SP_F	
	C_VU1_VU3	SP_A	

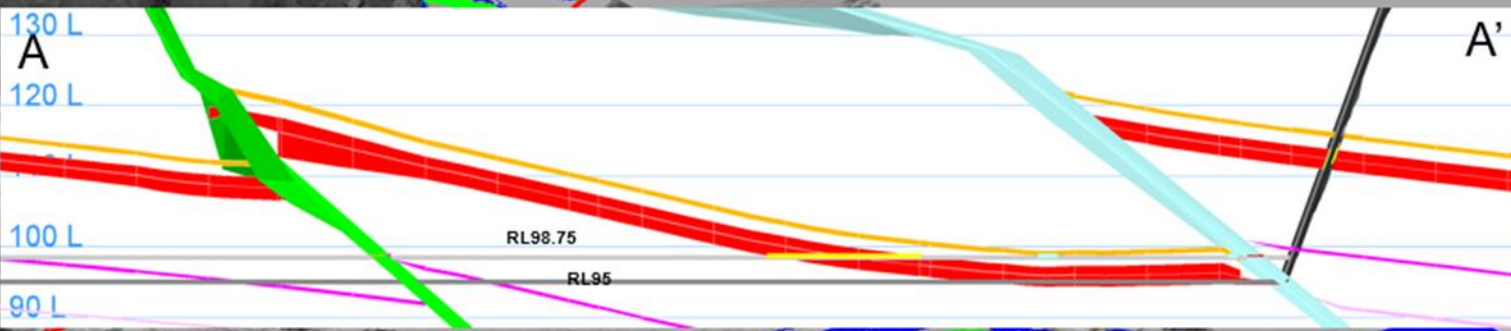
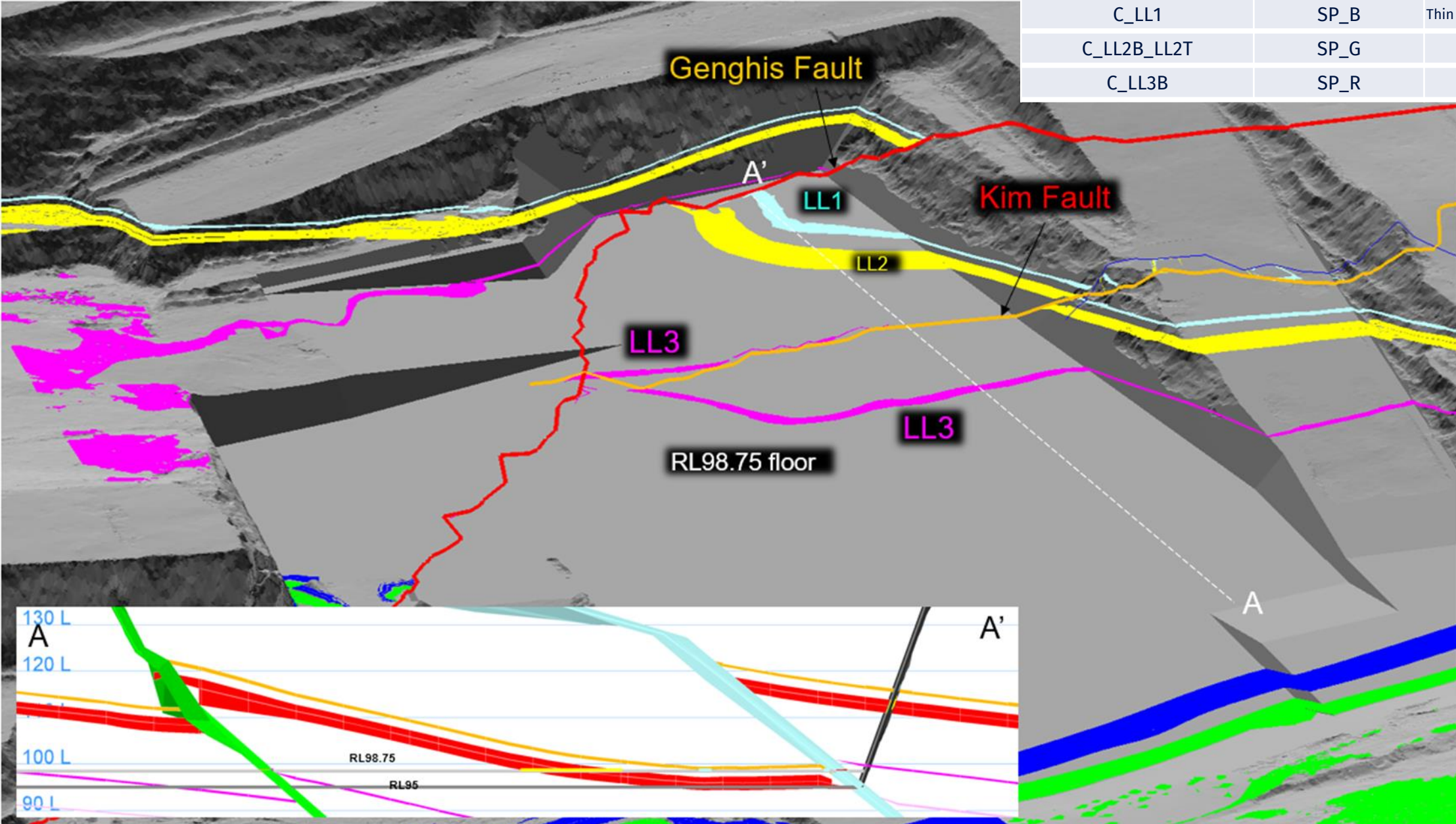
Ideal Roof and Floor Conditions



Flitch (RL98.75)

T03/S01

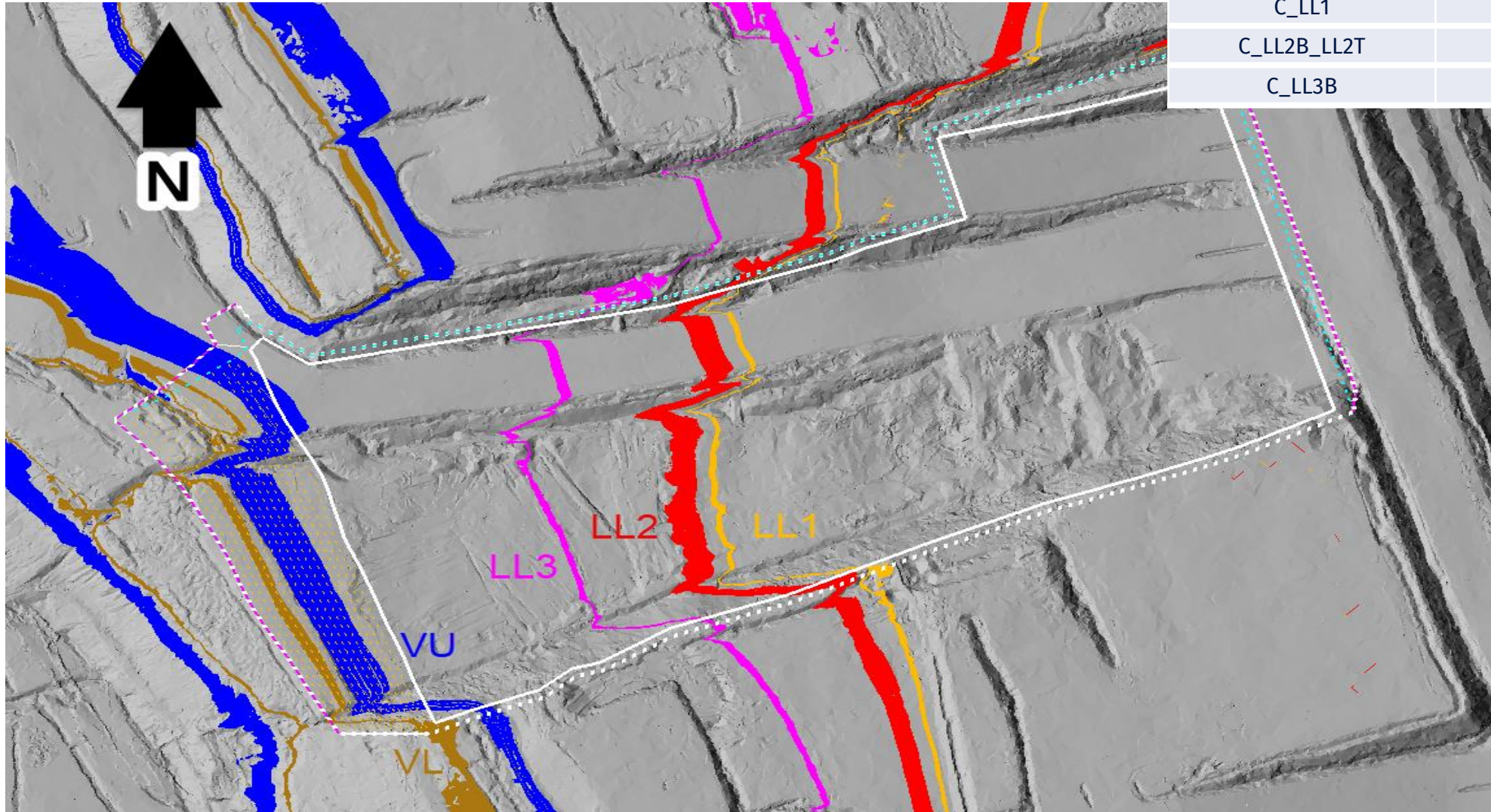
COAL CODE	STOCKPILE	COMMENTS
C_VU1_VU3	SP_Q	
C_VL1	VL Pad	
C_LL1	SP_B	Thin seam - take care when mining
C_LL2B_LL2T	SP_G	
C_LL3B	SP_R	



T04/S01 Ramp 5 De-Stack

Flitch 137

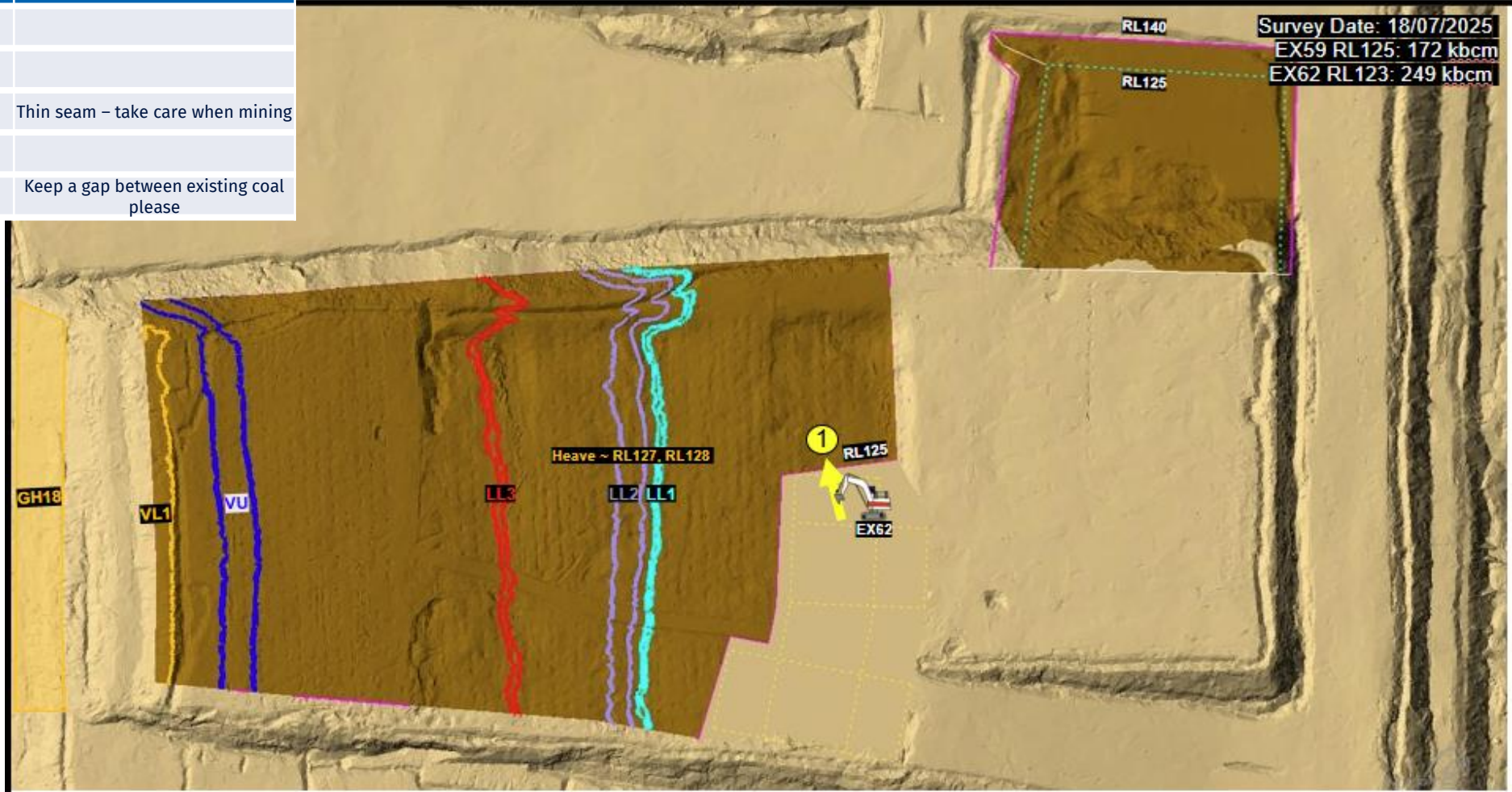
COAL CODE	STOCKPILE	COMMENTS
C_VU1_VU3	SP_C	
C_VL1	VL Pad	
C_LL1	SP_B	Thin seam – take care when mining
C_LL2B_LL2T	SP_P	
C_LL3B	SP_M	Keep a gap between existing coal please



T04/S01 123 RL

Terrace 4

COAL CODE	STOCKPILE	COMMENTS
C_VU1_VU3	SP_C	
C_VL1	VL Pad	
C_LL1	SP_B	Thin seam – take care when mining
C_LL2B_LL2T	SP_P	
C_LL3B	SP_M	Keep a gap between existing coal please



DESIGN LOCATION

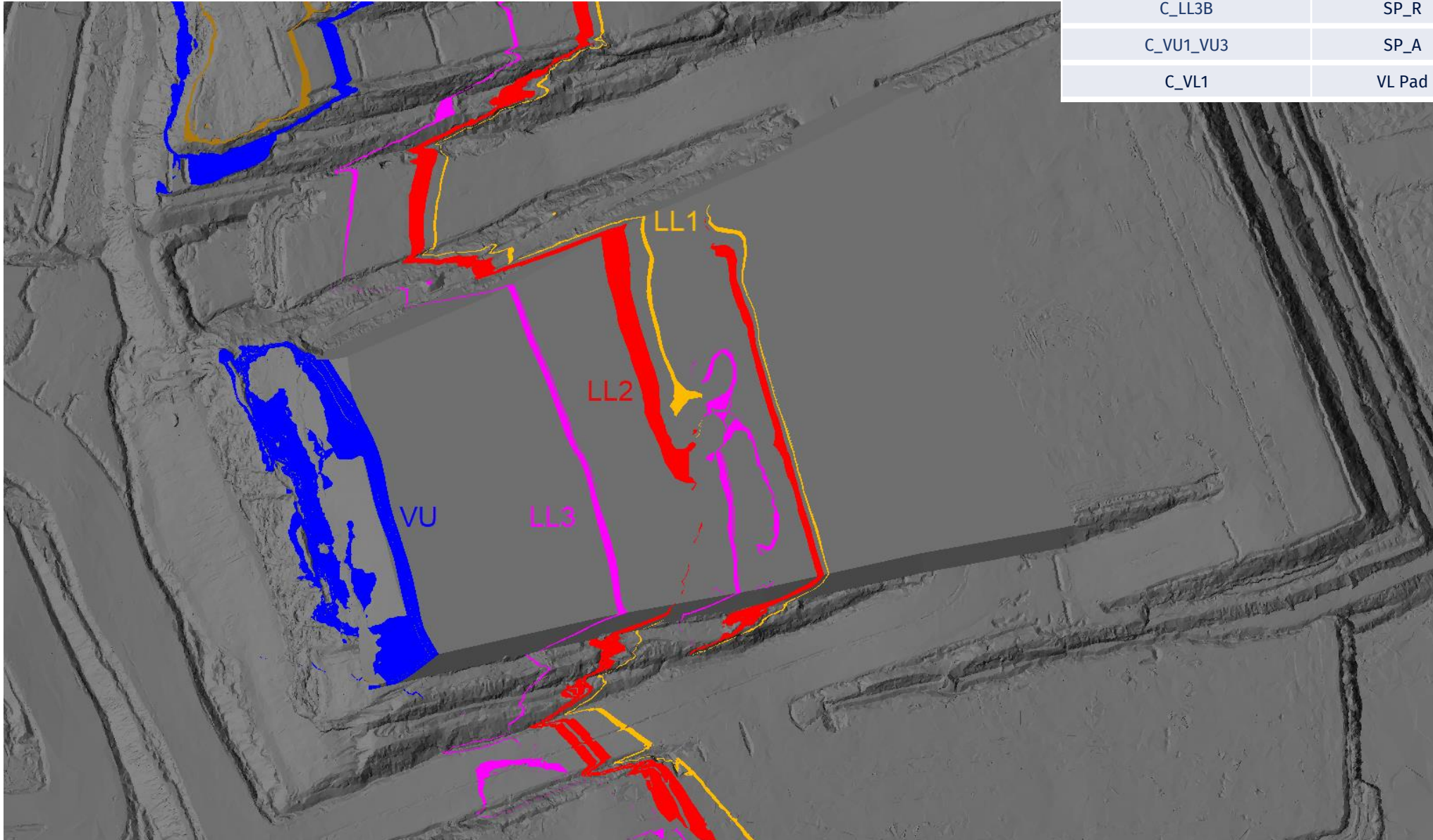


NOTES:

1. Post blast, drop into RL123 in front of Leichhardt coal and advance west.

T05/S01 140 RL

COAL CODE	STOCKPILE	COMMENTS
C_LL1	SP_B	Thin seam - take care when mining
C_LL2T_LL2B	SP_D	
C_LL3B	SP_R	Eastern Side
C_VU1_VU3	SP_A	
C_VL1	VL Pad	



ROM

