

# ODC Daily Coaling Plan

31/07/2025

Geologist Contact: 0473 223 132



Location	Coal Type	Destination	Comments
T02	C_VU1_VU3	SP_O	
	C_VL1	VL Pad	DO not mine past RL95
T03	C_VU1_VU3	SP_Q	
	C_VL1	VL Pad	
	C_LL1	SP_B	Thin seam – take care when mining Tip Stockpile South to North
	C_LL2T_LL2B	SP_G	
	C_LL3B	SP_R	Thin seam – take care when mining. Stockpiled separately on R (western side)
T04	C_LL1	SP_B	Thin seam – take care when mining
	C_LL2T_LL2B	SP_P	
	C_LL3B	SP_M	
	C_VU1_VU3	SP_C	
	C_VL1	VL_PAD	
T05 Ramp 6 De-Stack	C_LL3B	SP_F	
	C_LL2T_LL2B	SP_D	
	C_VU1_VU3	SP_A	
T05	C_LL1	SP_B	Thin seam – take care when mining
	C_LL2T_LL2B	SP_D	
	C_LL3B	SP_F	
	C_VU1_VU3	SP_A	



# Ideal Roof and Floor Conditions

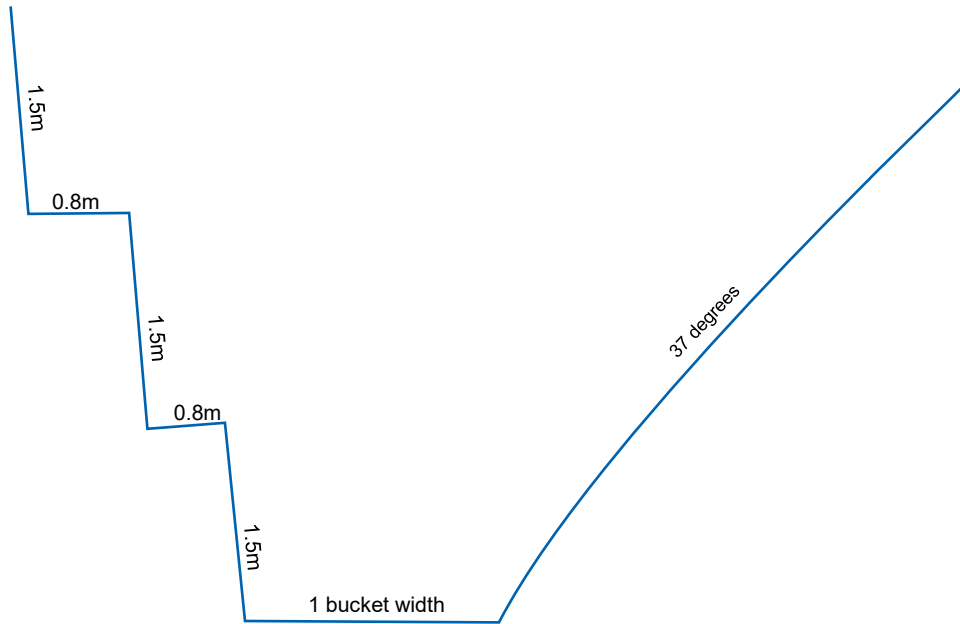




# T02/S01

We are looking to assess the quality of the coal plies within the VL seam in Terrace 2. To complete this assessment, we require 2 test pits to be dug to the floor of the VL seam, compliant with safety protocol for personnel to enter the test pits. These test pits will need to be dug at the 92mRL so as to not interfere with the running track for the pushed VL.

The test pits must have benches with clean faces on one side, so the geologists can take in-situ samples of each coal and waste ply.



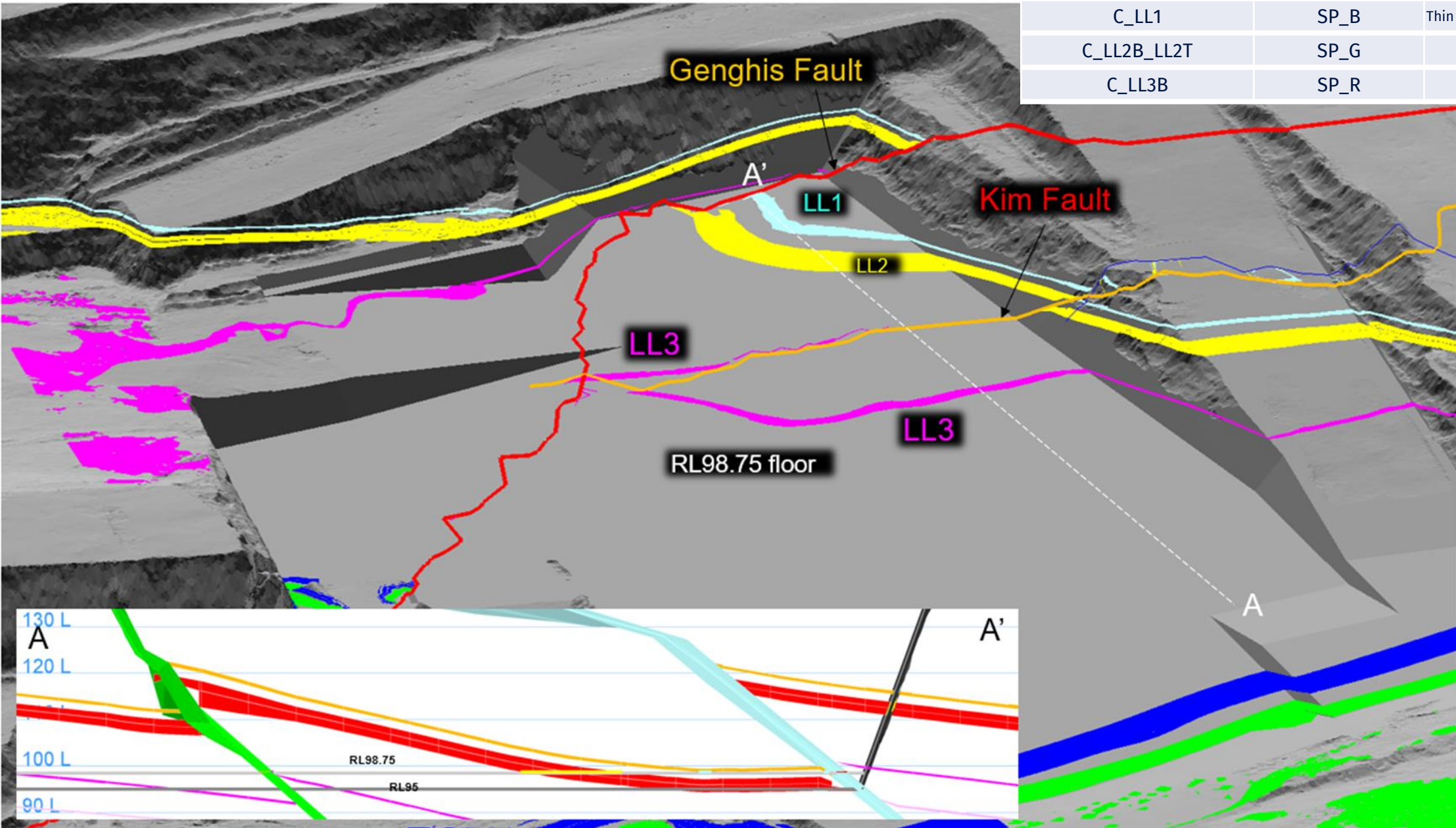
Example Cross Section of Test Pit



# Flitch (RL98.75)

## T03/S01

COAL CODE	STOCKPILE	COMMENTS
C_VU1_VU3	SP_Q	
C_VL1	VL Pad	
C_LL1	SP_B	Thin seam – take care when mining
C_LL2B_LL2T	SP_G	
C_LL3B	SP_R	



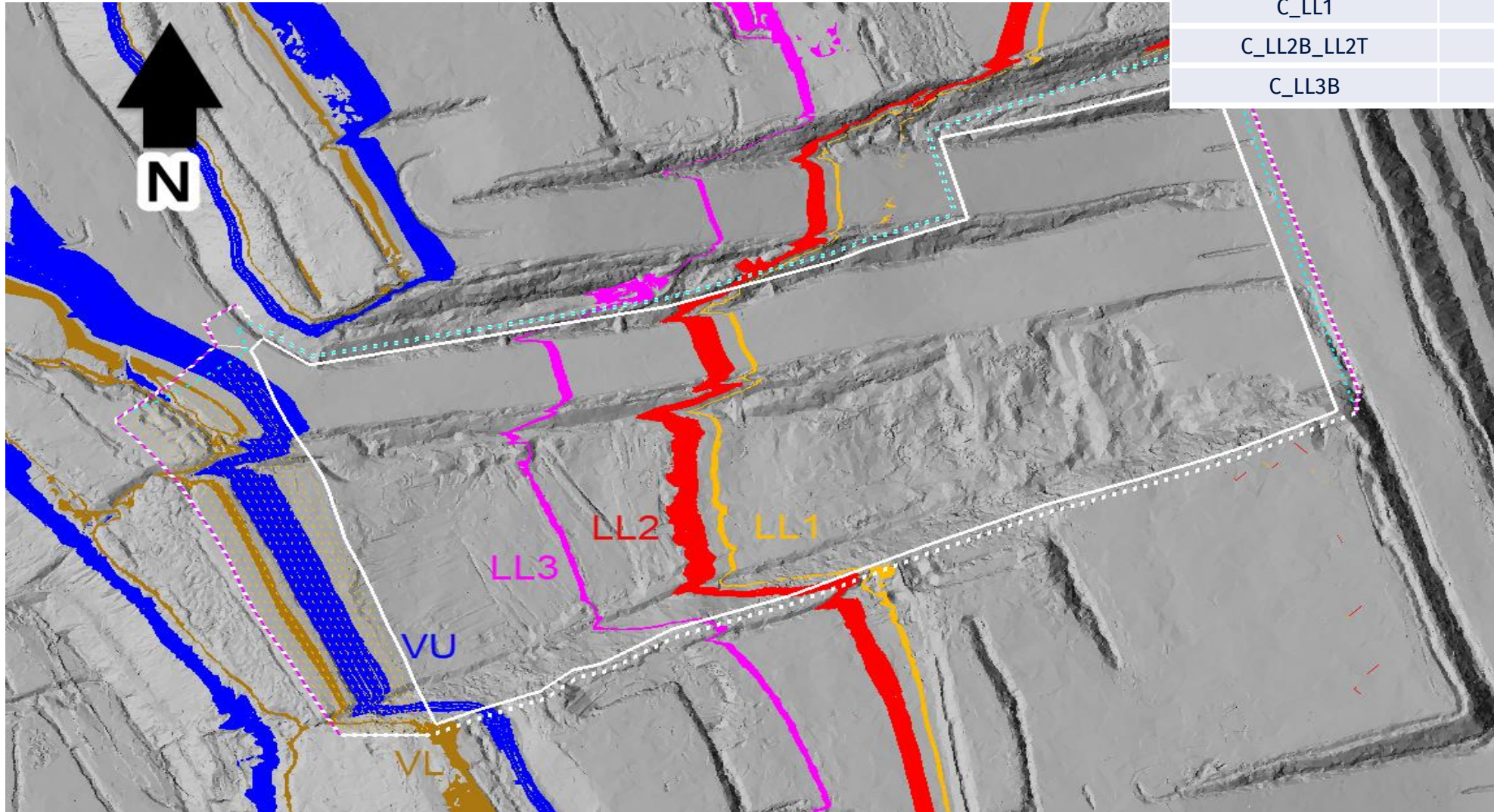
THIESS



# T04/S01 Ramp 5 De-Stack

## Flitch 137

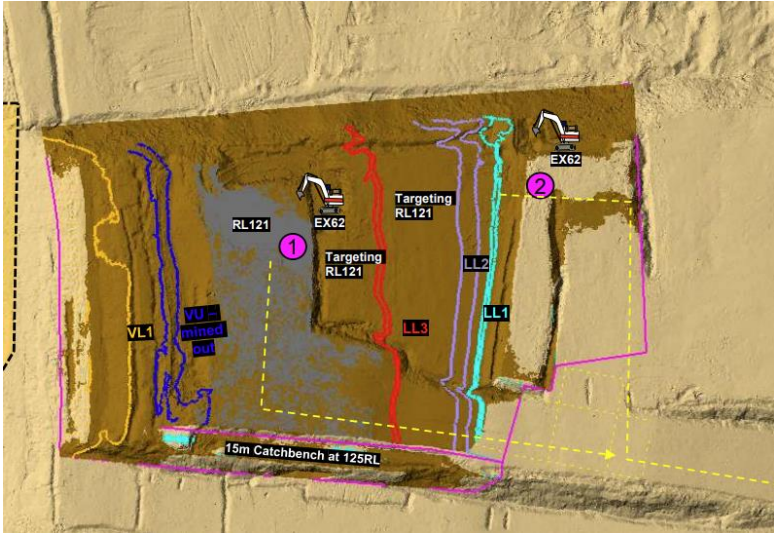
COAL CODE	STOCKPILE	COMMENTS
C_VU1_VU3	SP_C	
C_VL1	VL Pad	
C_LL1	SP_B	Thin seam – take care when mining
C_LL2B_LL2T	SP_P	
C_LL3B	SP_M	Keep a gap between existing coal please





# T04/S01 123 RL

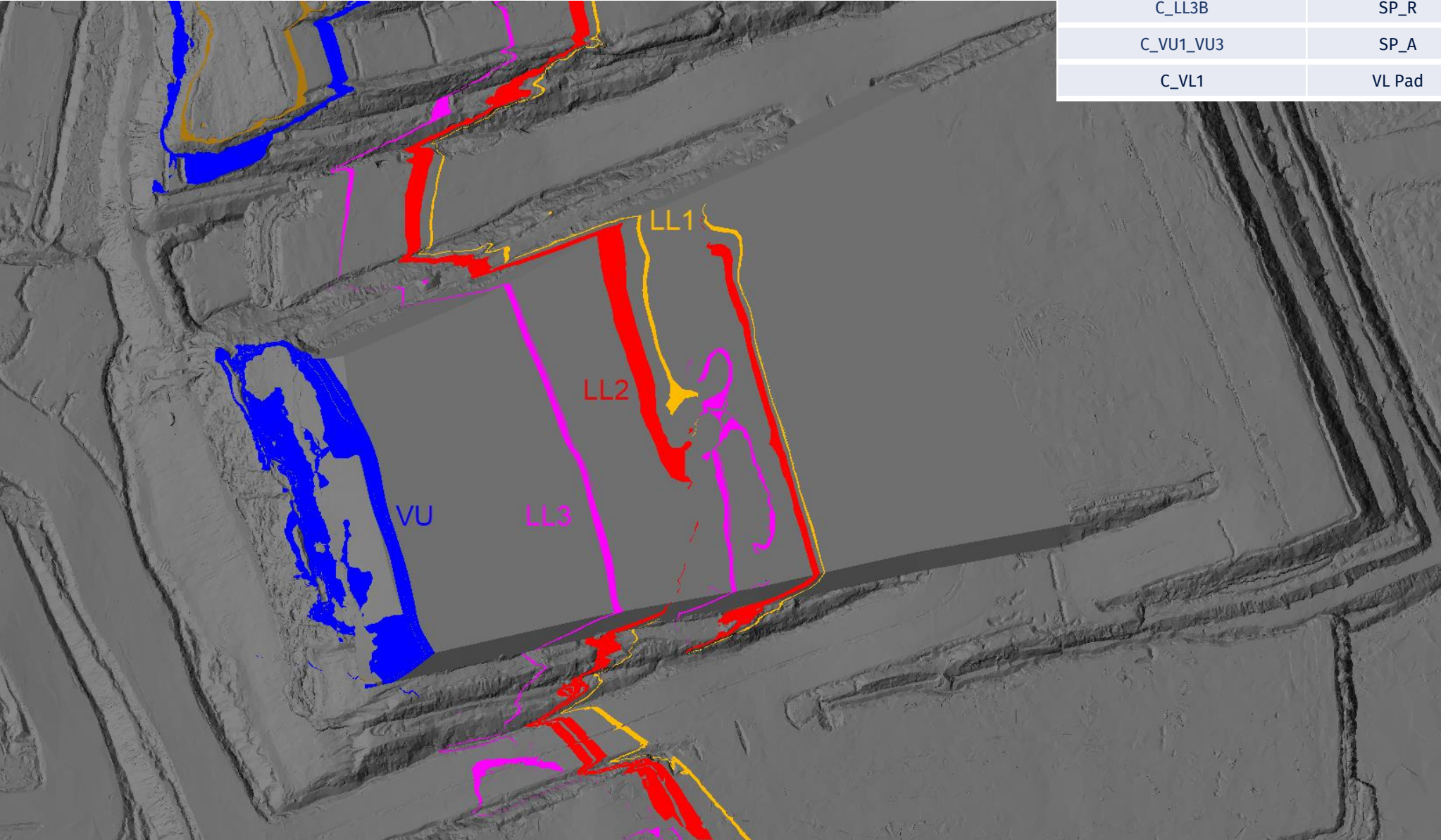
COAL CODE	STOCKPILE	COMMENTS
C_VU1_VU3	SP_C	
C_VL1	VL Pad	
C_LL1	SP_B	Thin seam – take care when mining
C_LL2B_LL2T	SP_P	
C_LL3B	SP_M	Keep a gap between existing coal please





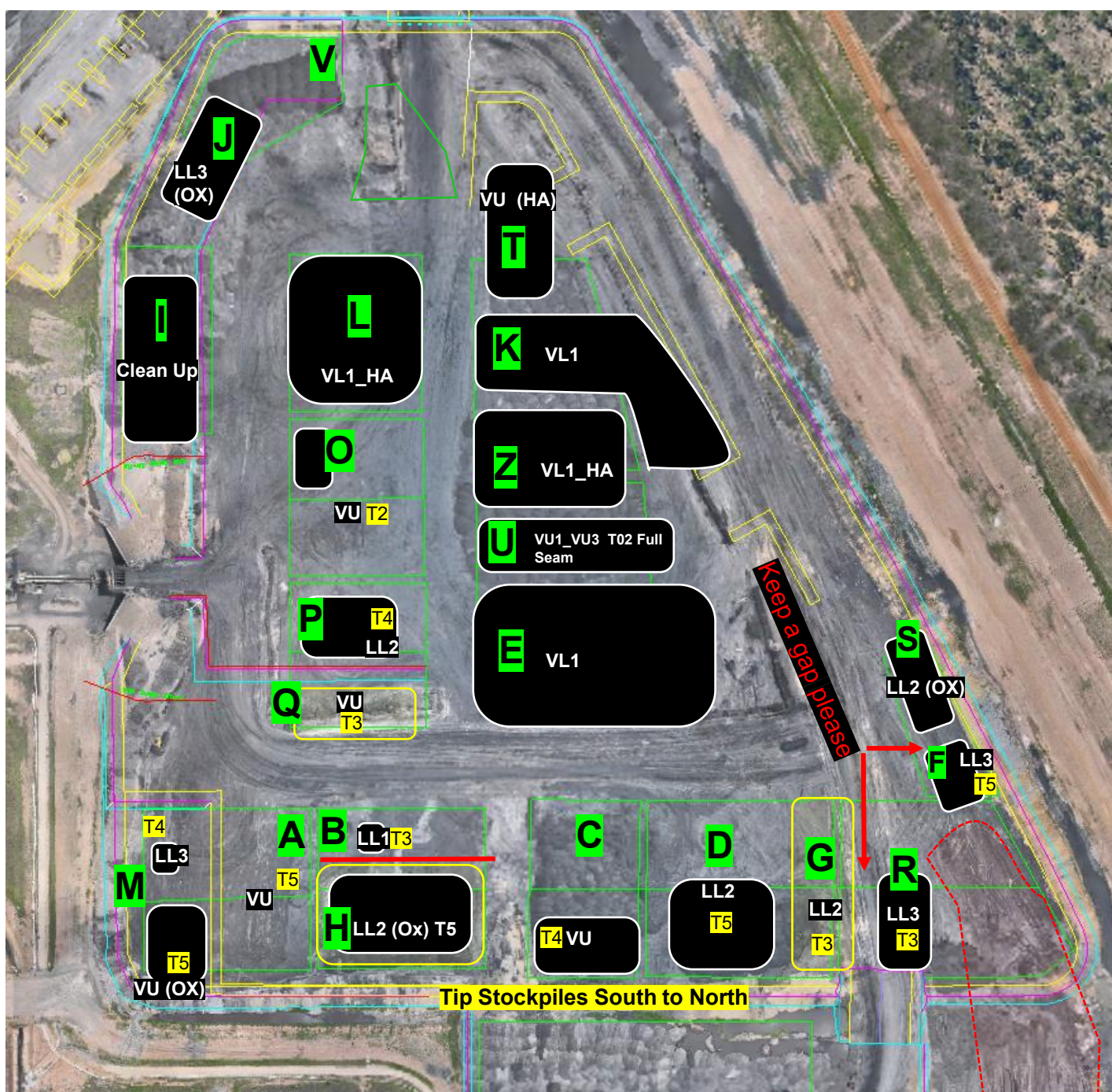
# T05/S01 140 RL

COAL CODE	STOCKPILE	COMMENTS
C_LL1	SP_B	Thin seam – take care when mining
C_LL2T_LL2B	SP_D	
C_LL3B	SP_R	Eastern Side
C_VU1_VU3	SP_A	
C_VL1	VL Pad	





# ROM



# CHPP Coal Feed Sequence

Communicate any direct feed start and finish time to CHPP control.

Comments

Currently on Blend 3  
Once Stockpile D is exhausted change to Blend 4  
Once Stockpile C is exhausted change to Blend 5

Notes:

Stockpile P has loads of dirt on back of pile, which should be clearly pegged out on ground.  
DO NOT put this material into the CHPP

	Blends							
	Feed 1	Feed 2	Feed 3	Ratio	ROM Loaders	ROM Trucks	Direct Feed	Comments
Blend 1	SP-D	SP-A		1:1	1	1	No	1 x LL2 (T05S02): 1 x VU (T05S01)
Blend 2	SP-D	SP-Q		1:1	1	1	No	1 x LL2 (T05S02): 1 x VU (T03S01)
Blend 3	SP-D	SP-C		1:1	1	1	No	1 x LL2 (T05S02): 1 x VU (T04S01)
Blend 4	SP-C			Straight	1	1	No	1 x VU (T04S01)
Blend 5	SP-P			Straight	1	1	No	1 x LL2 (T04S01)
Blend 6								
Wet weather								