

ODC Daily Coaling Plan

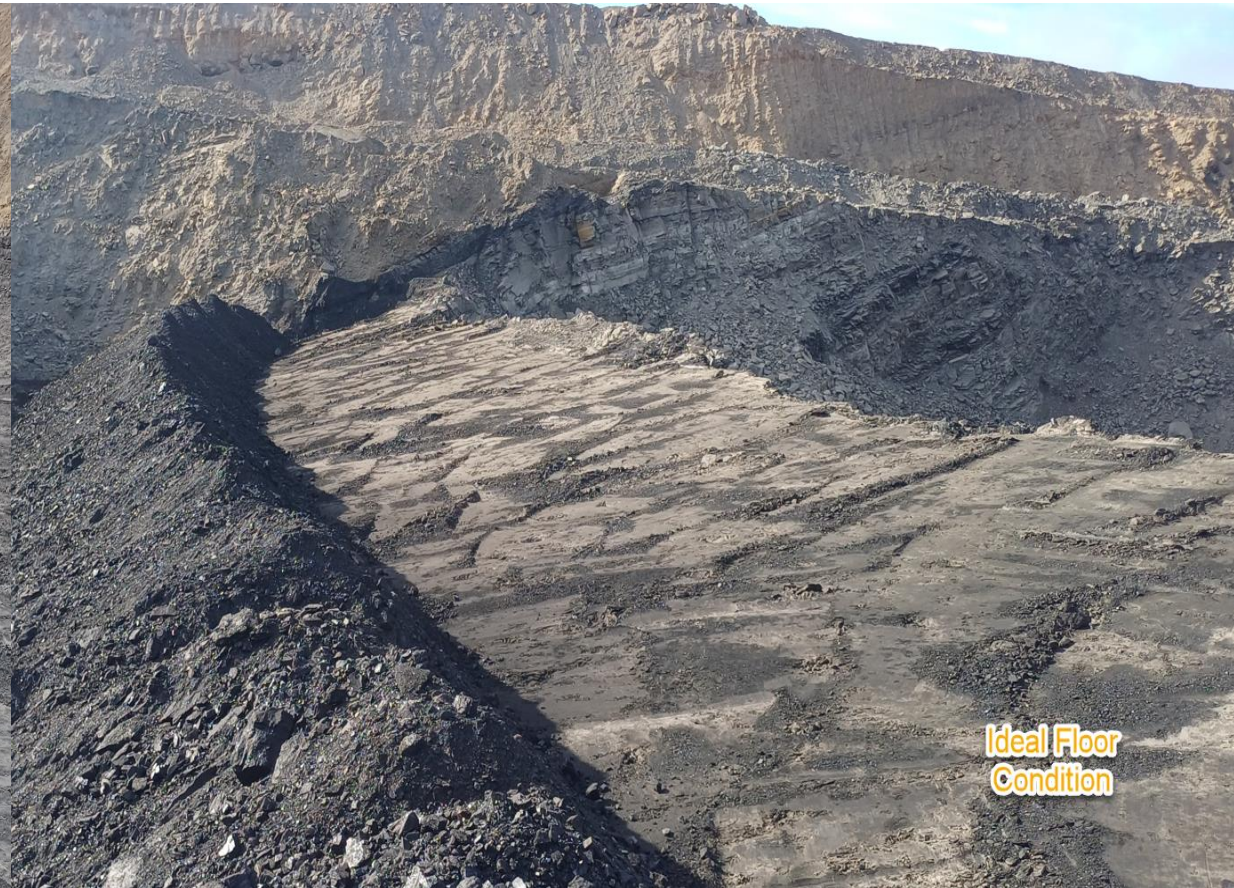
05/08/2025

Geologist Contact: 0473 223 132



Location	Coal Type	Destination	Comments
T02	C_VU1_VU3	SP_O	
	C_VL1	VL Pad	DO not mine past RL95
T03	C_VU1_VU3	SP_Q	
	C_VL1	VL Pad	
	C_LL1	SP_B	Thin seam – take care when mining Tip Stockpile South to North
	C_LL2T_LL2B	SP_G	
	C_LL3B	SP_M	Thin seam – take care when mining. Stockpiled separately on R (western side)
T04	C_LL1	SP_B	Thin seam – take care when mining
	C_LL2T_LL2B	SP_P	
	C_LL3B	SP_Q	
	C_VU1_VU3	SP_C	
	C_VL1	VL_PAD	
T05 Ramp 6 De-Stack	C_LL3B	SP_F/SP-R	
	C_LL2T_LL2B	SP_D	
	C_VU1_VU3	SP_A	
T05	C_LL1	SP_B	Thin seam – take care when mining
	C_LL2T_LL2B	SP_D	
	C_LL3B	SP_F/SP-R	
	C_VU1_VU3	SP_A	

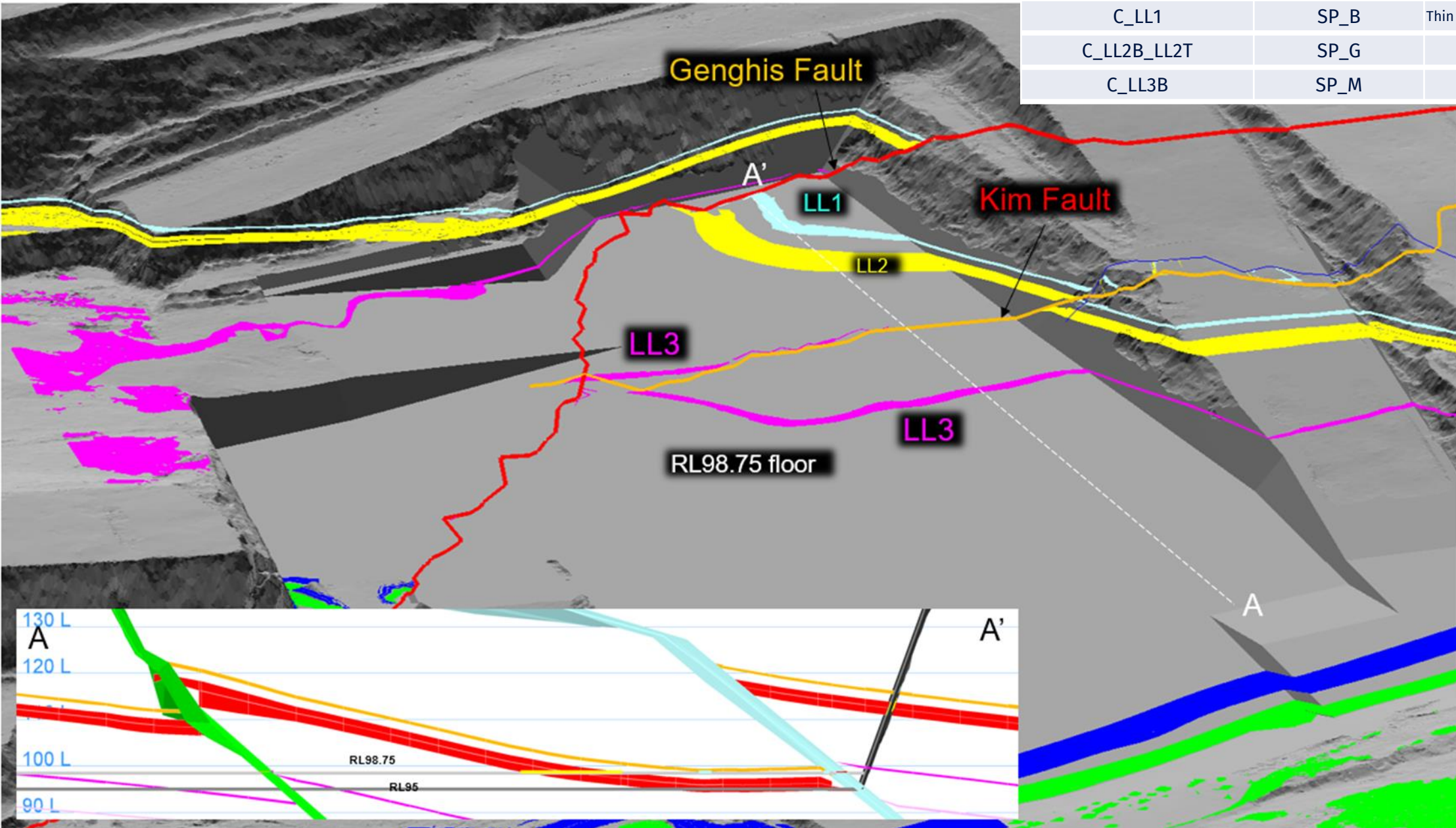
Ideal Roof and Floor Conditions



Flitch (RL98.75)

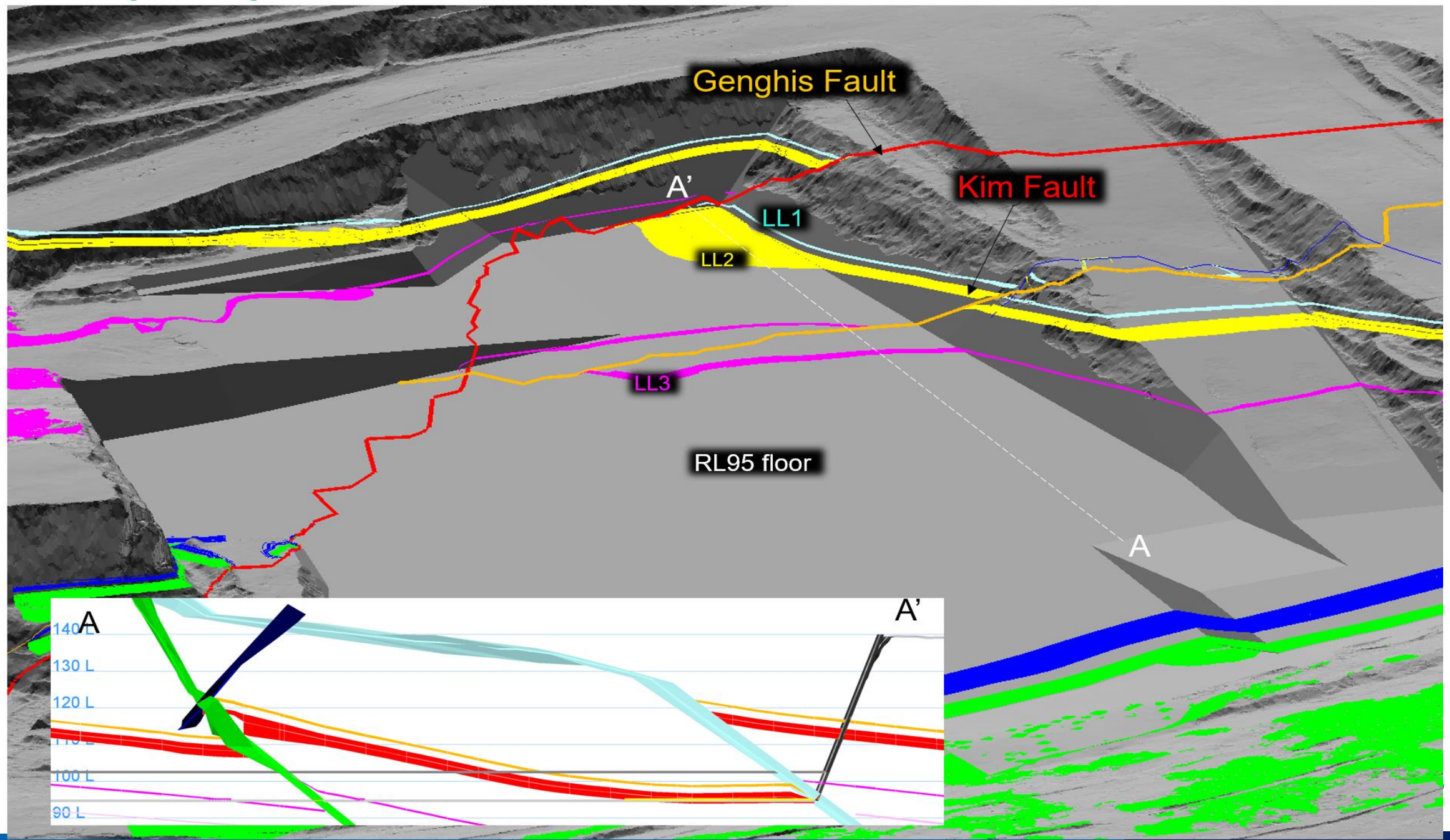
T03/S01

COAL CODE	STOCKPILE	COMMENTS
C_VU1_VU3	SP_Q	
C_VL1	VL Pad	
C_LL1	SP_B	Thin seam – take care when mining
C_LL2B_LL2T	SP_G	
C_LL3B	SP_M	Separated to OX Coal



THIESS

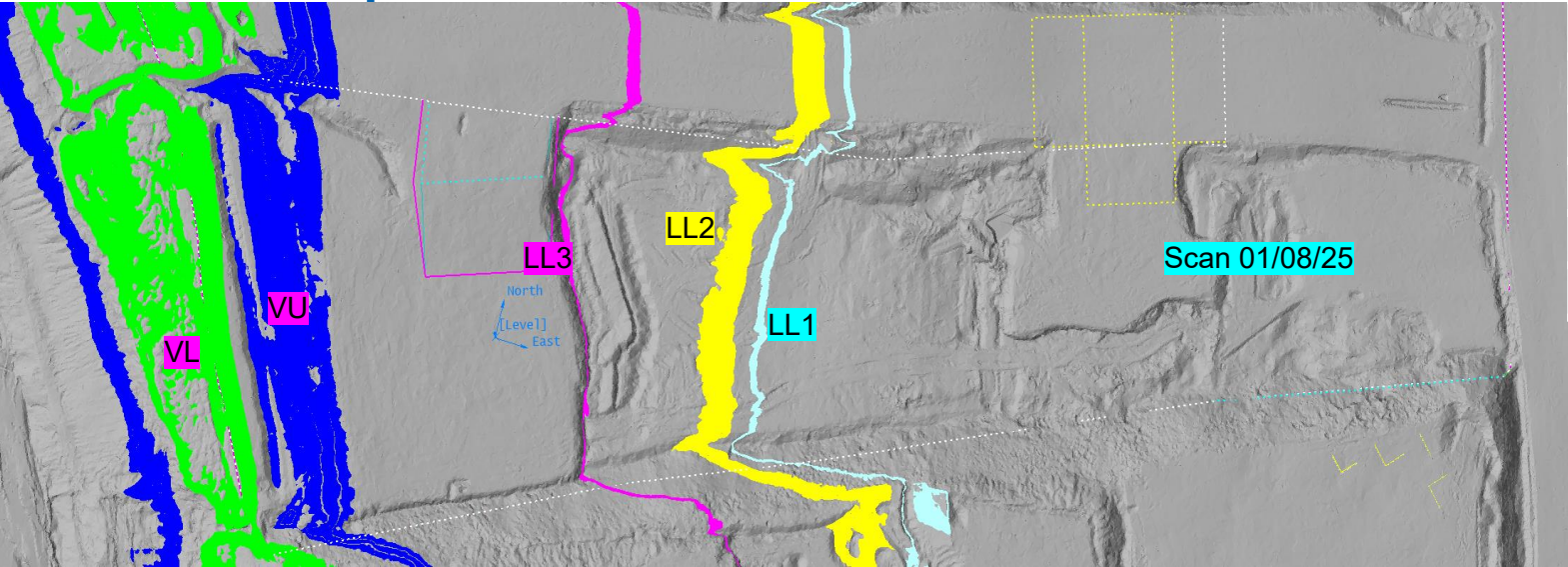
Flitch (RL95)



T03/S01



T04/S01 Ramp 5 De-Stack

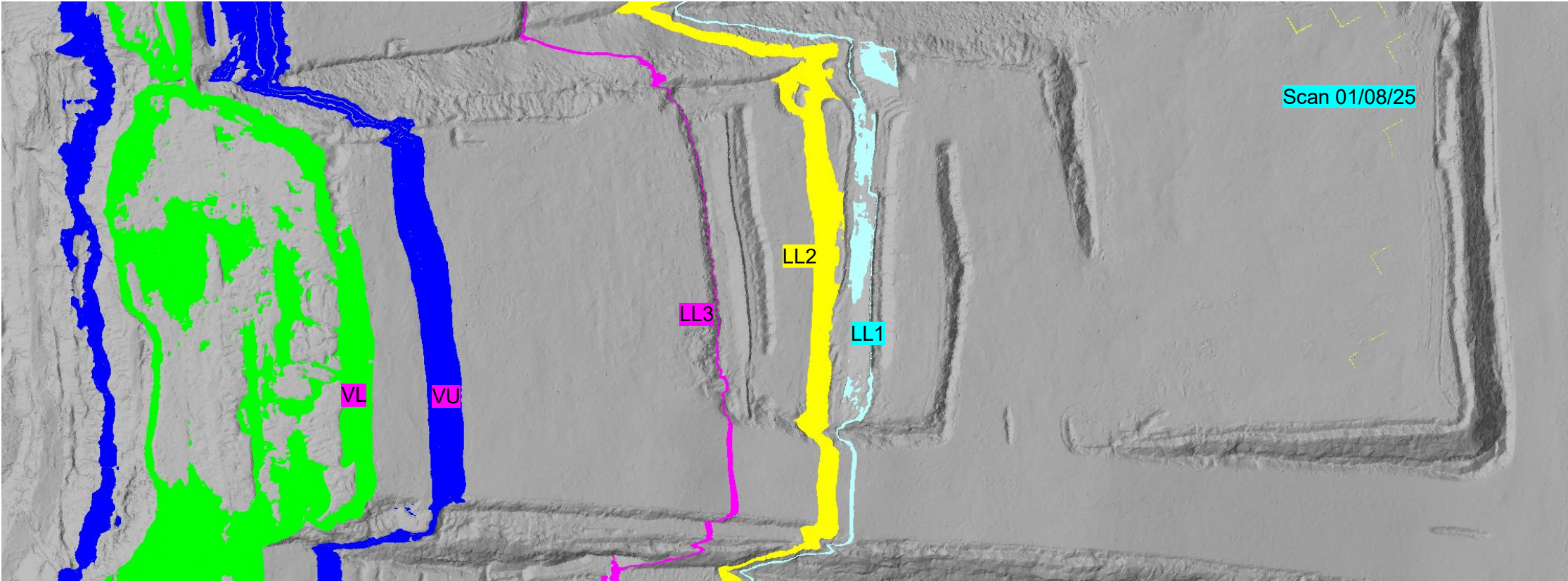
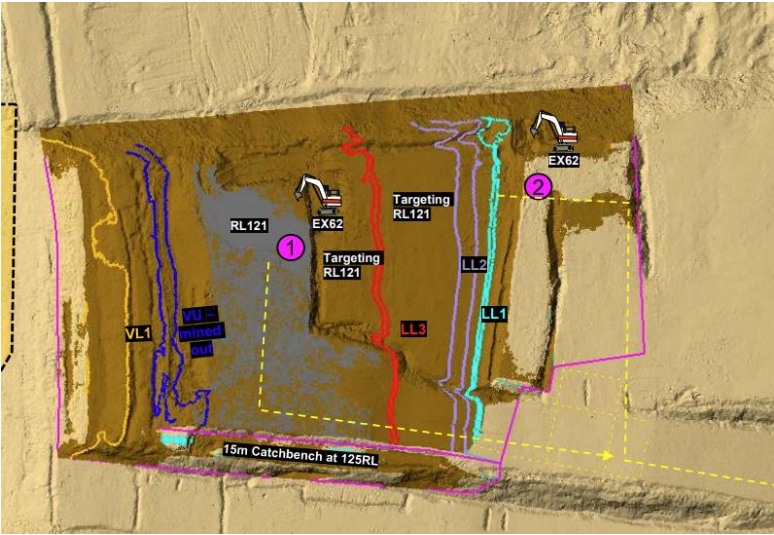


COAL CODE	STOCKPILE	COMMENTS
C_VU1_VU3	SP_C	
C_VL1	VL Pad	
C_LL1	SP_B	Thin seam – take care when mining
C_LL2B_LL2T	SP_P	
C_LL3B	SP_Q	

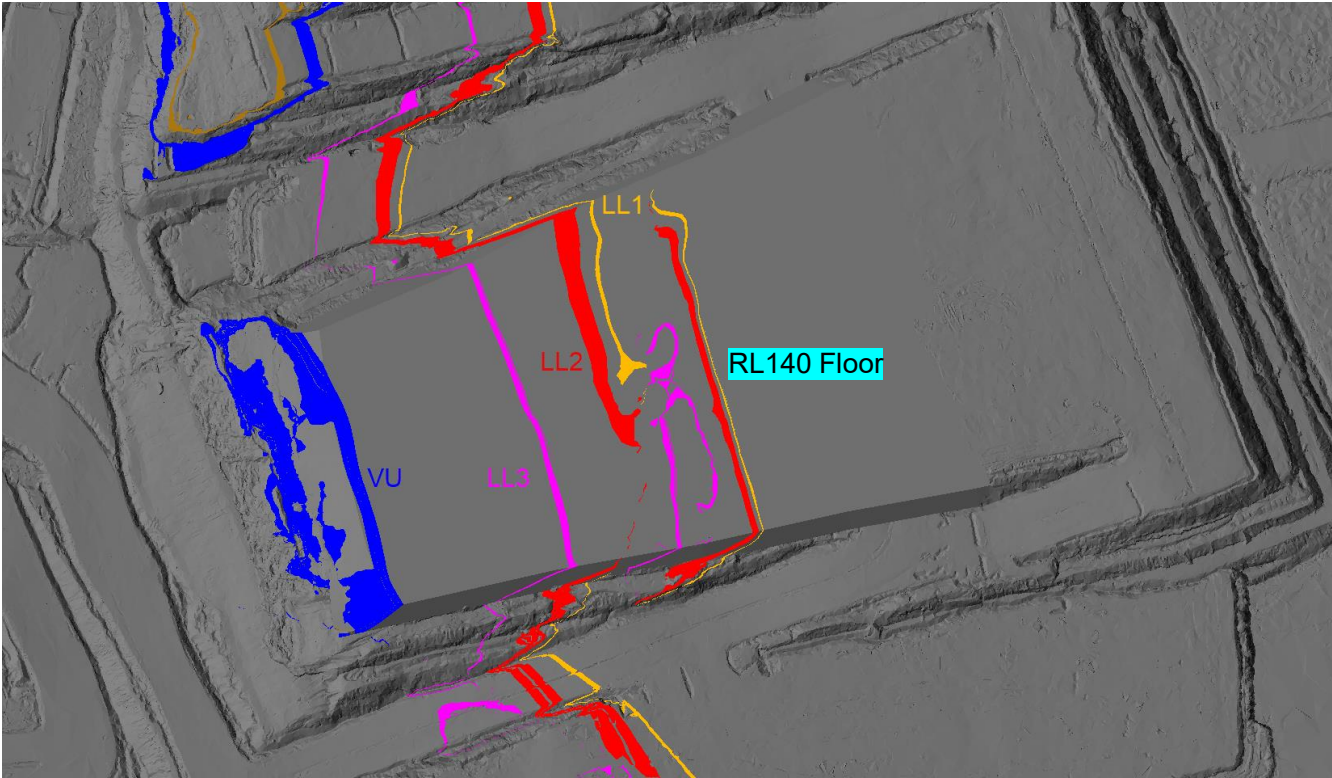


T04/S01 123 RL

COAL CODE	STOCKPILE	COMMENTS
C_VU1_VU3	SP_C	
C_VL1	VL Pad	
C_LL1	SP_B	Thin seam – take care when mining
C_LL2B_LL2T	SP_P	
C_LL3B	SP_M	Keep a gap between existing OX coal please



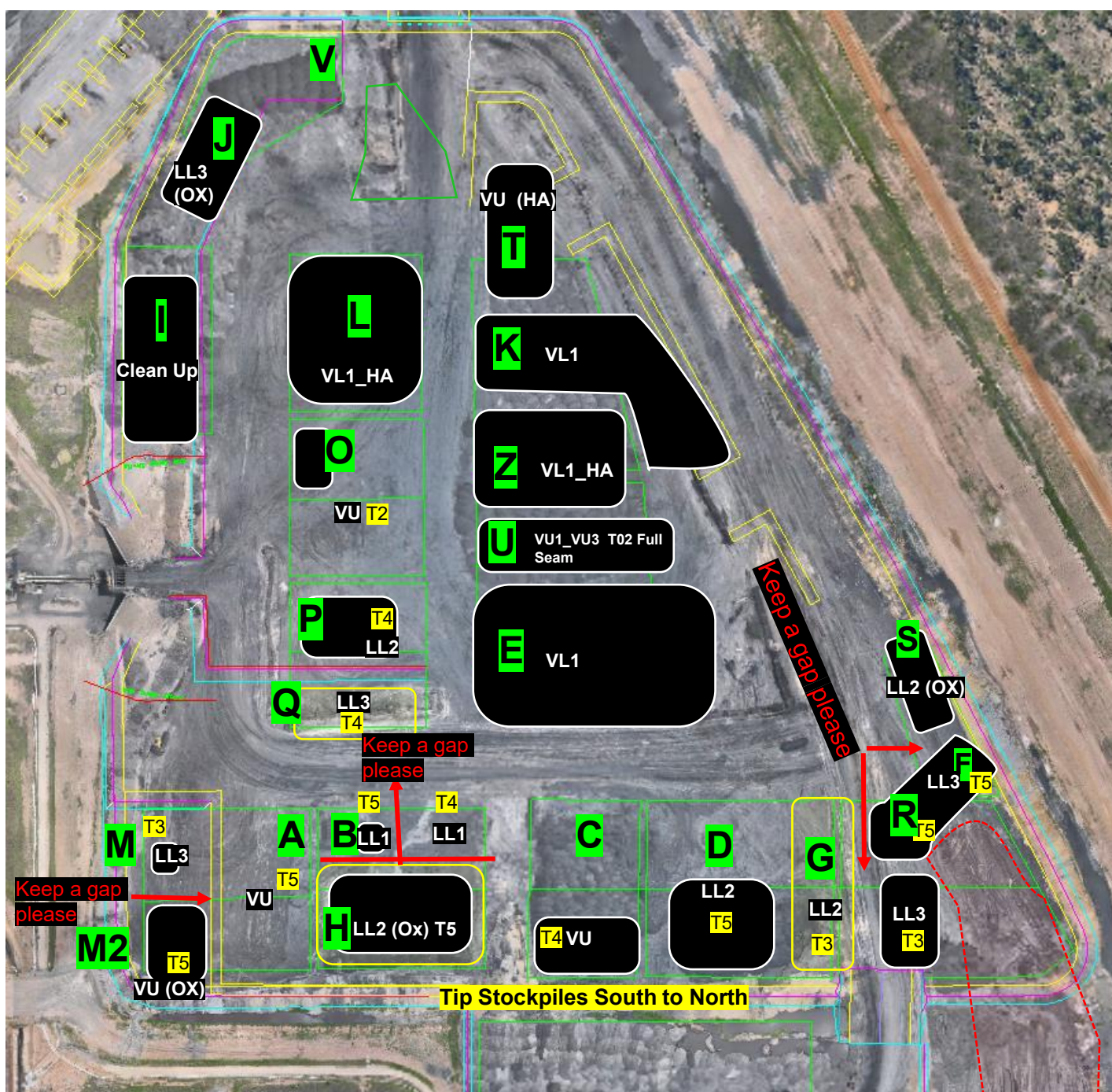
T05/S01 140 RL



COAL CODE	STOCKPILE	COMMENTS
C_LL1	SP_B	Thin seam – take care when mining
C_LL2T_LL2B	SP_D	
C_LL3B	SP_R/SP-F	Eastern Side
C_VU1_VU3	SP_A	
C_VL1	VL Pad	



ROM



CHPP Coal Feed Sequence

Communicate any direct feed start and finish time to CHPP control.

Comments

Currently on Blend 3
Once Stockpile C exhausted change to Blend 4
Once Stockpile G exhausted change to Blend 5

Notes:

Stockpile P has loads of dirt on back of pile, which should be clearly pegged out on ground. DO NOT put this material into the CHPP

	Blends							
	Feed 1	Feed 2	Feed 3	Ratio	ROM Loaders	ROM Trucks	Direct Feed	Comments
Blend 1	SP-B	SP-C		1:1	1	1	No	1 x LL1 (T03S01): 1 x VU (T04S01)
Blend 2	SP-H	SP-F		2:1	1	1	No	2 x LL2 (Ox T05S01): 1 x LL3 (T05S01)
Blend 3	SP-C	SP-F		1:1	1	1	No	1 x VU (T04S01): 1 x LL3 (T05S01)
Blend 4	SP-G	SP-F		2:1	1	1	No	2 x LL2 (T03S02): 1 x LL3 (T05S01)
Blend 5								
Blend 6	SP-D	SP-C		1:1	1	1	No	1 x LL2 (T05S01): 1 x VU (T04S01)
Wet weather								

