

ODC Daily Coaling Plan

06/08/2025

Geologist Contact: 0473 223 132



Location	Coal Type	Destination	Comments
T02	C_VU1_VU3	SP_O	
	C_VL1	VL Pad	DO not mine past RL95
T03			
	C_LL1	SP_B	Thin seam – take care when mining Tip Stockpile South to North
	C_LL2T_LL2B	SP_G	
	C_LL3B	SP_M	Thin seam – take care when mining.
T04	C_LL1	SP_B	Thin seam – take care when mining
	C_LL2T_LL2B	SP_P	
	C_LL3B	SP_Q	
	C_VU1_VU3	SP_C	
	C_VL1	VL_PAD	
T05 Ramp 6 De-Stack	C_LL3B	SP_F/SP-R	
	C_LL2T_LL2B	SP_D	
	C_VU1_VU3	SP_A	
T05	C_LL1	SP_B	Thin seam – take care when mining
	C_LL2T_LL2B	SP_D	
	C_LL3B	SP_F/SP-R	
	C_VU1_VU3	SP_A	

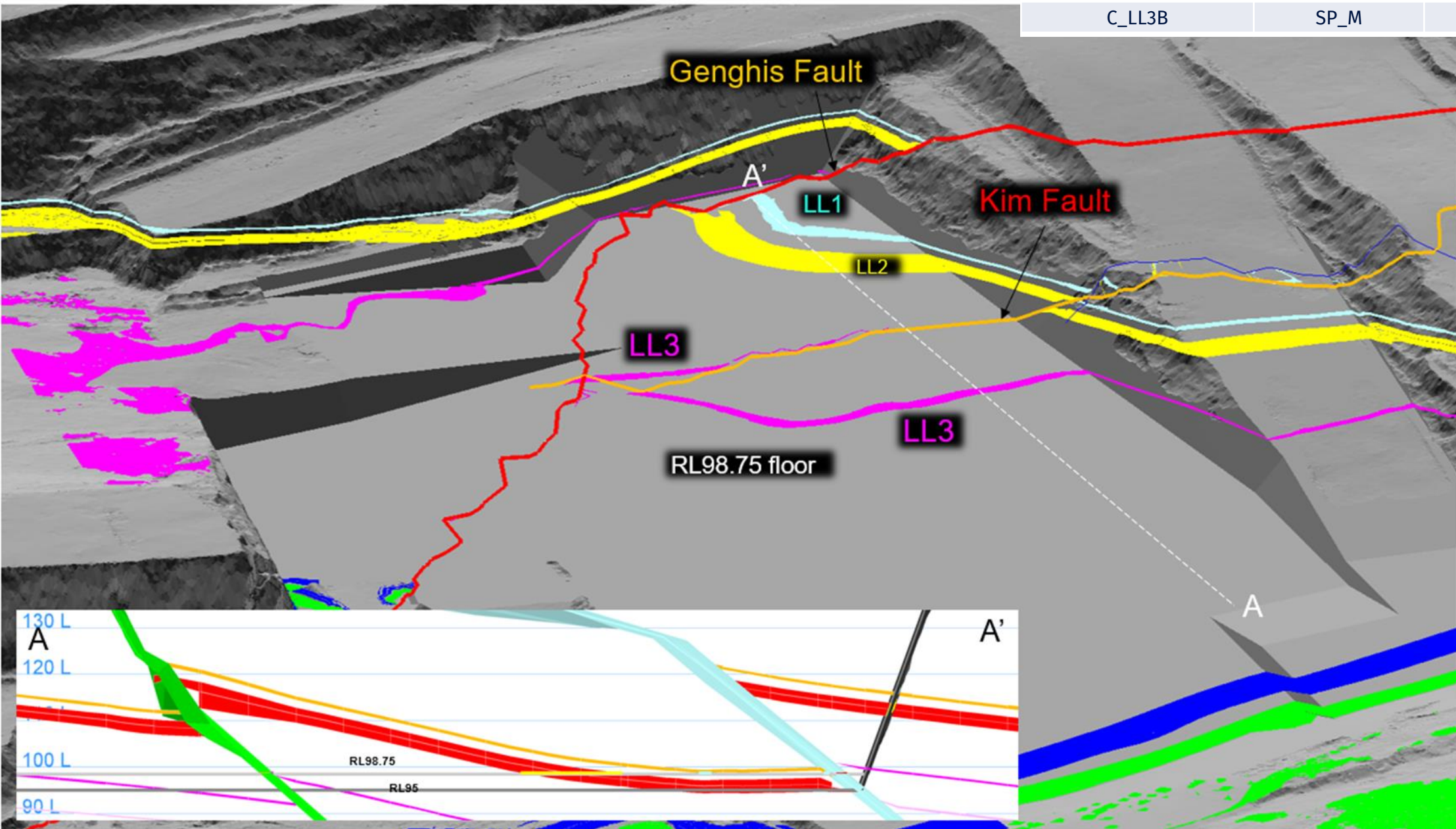
Ideal Roof and Floor Conditions



Flitch (RL98.75)

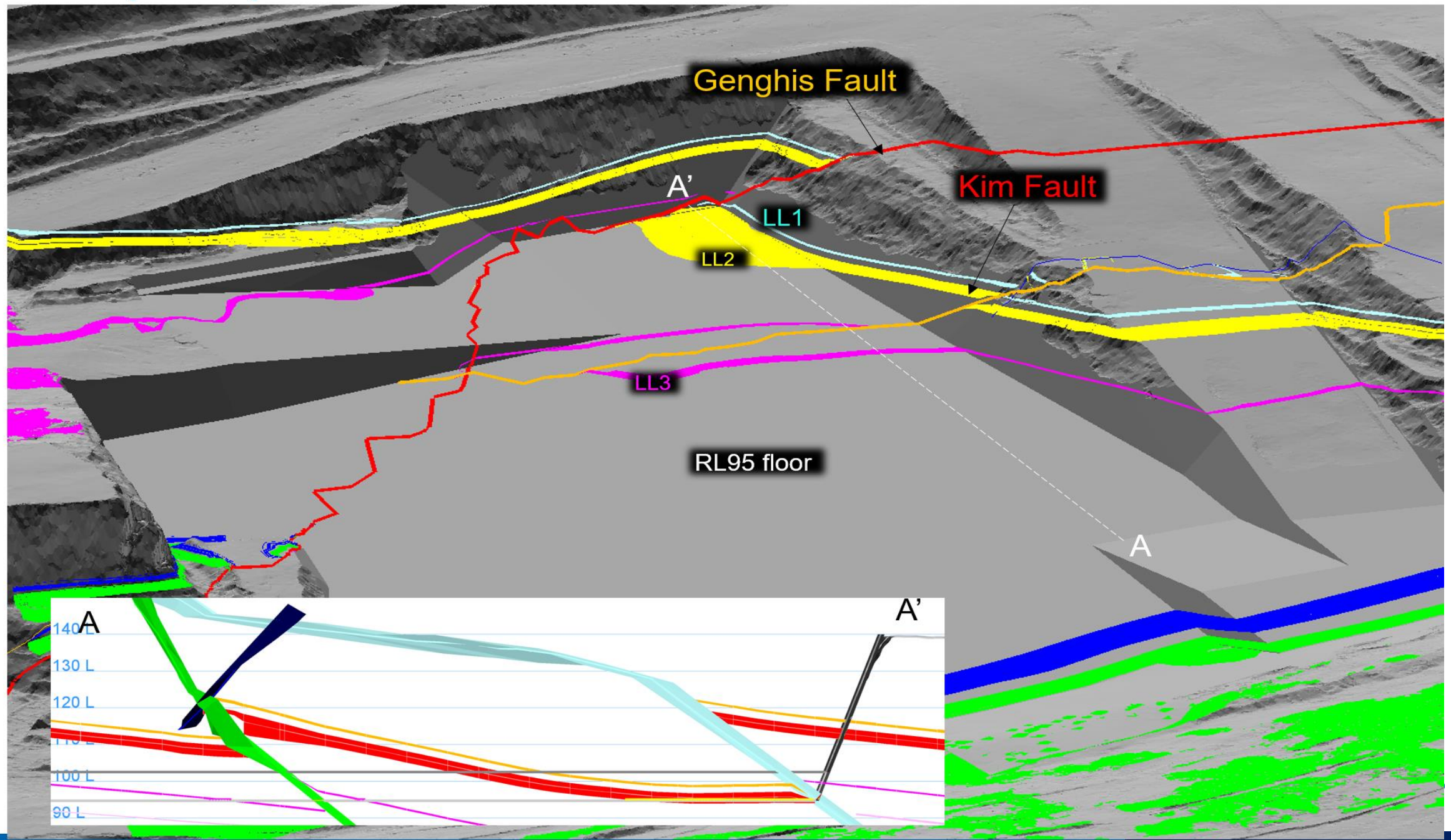
T03/S02

COAL CODE	STOCKPILE	COMMENTS
C_LL1	SP_B	Thin seam – take care when mining
C_LL2B_LL2T	SP_G	
C_LL3B	SP_M	Separated to OX Coal



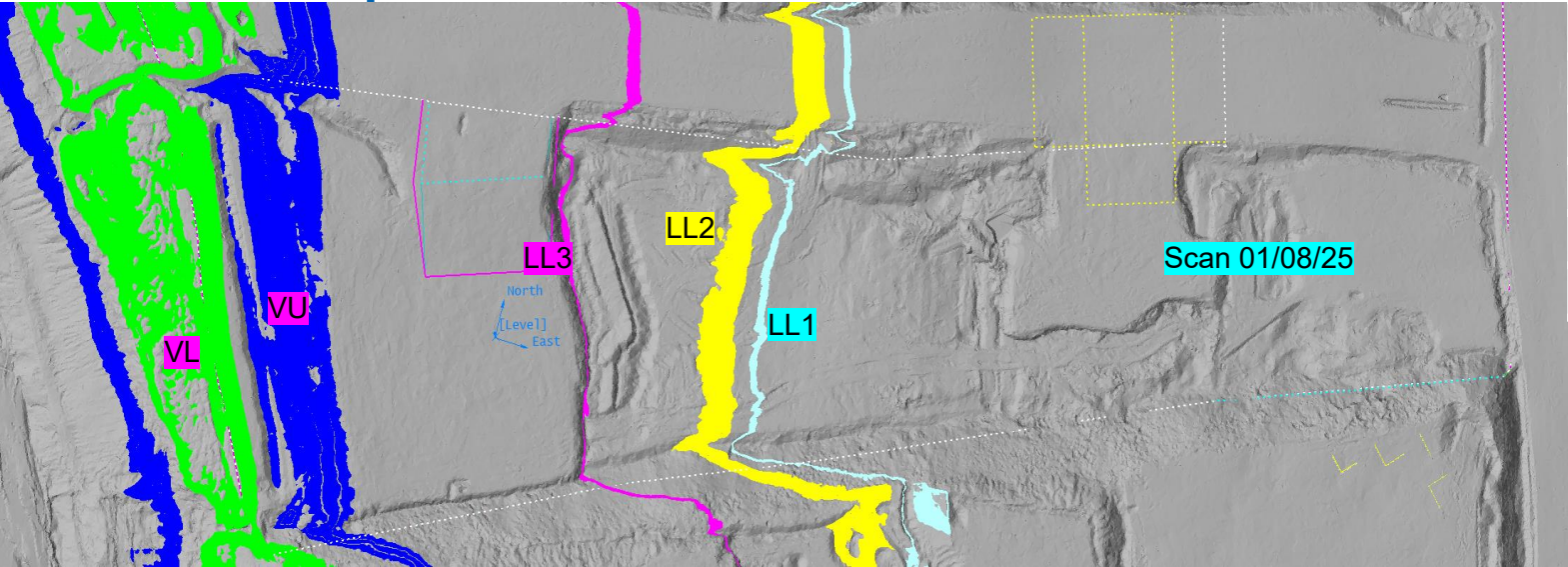
THIESS

Flitch (RL95)



LL2 coal to be recovered

T04/S01 Ramp 5 De-Stack

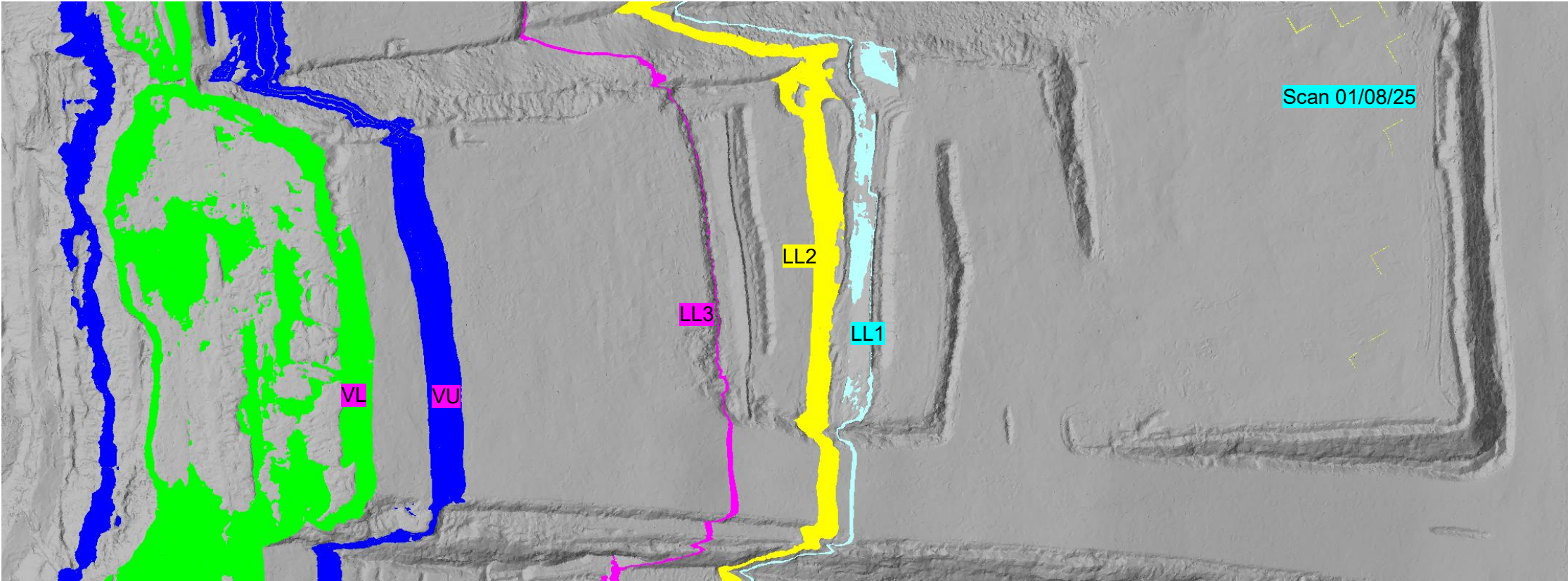
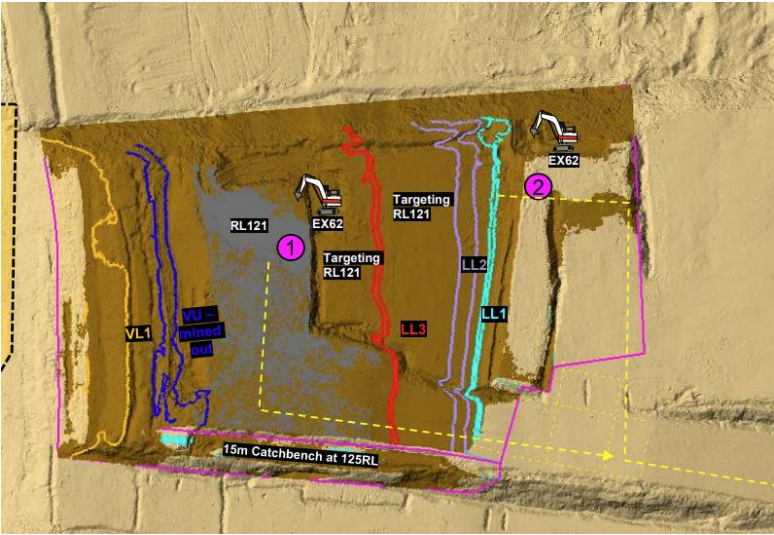


COAL CODE	STOCKPILE	COMMENTS
C_VU1_VU3	SP_C	
C_VL1	VL Pad	
C_LL1	SP_B	Thin seam – take care when mining
C_LL2B_LL2T	SP_P	
C_LL3B	SP_Q	



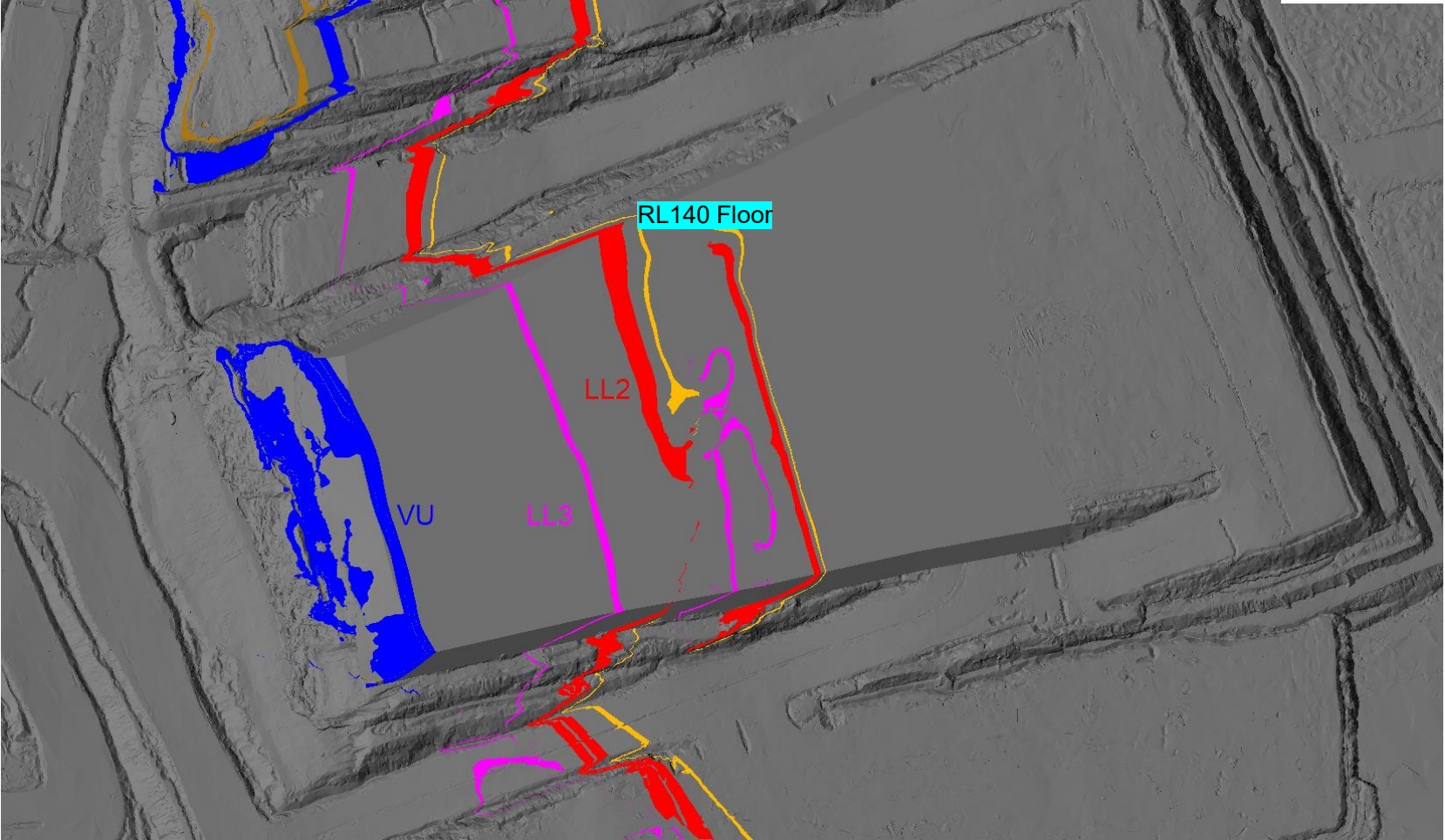
T04/S01 123 RL

COAL CODE	STOCKPILE	COMMENTS
C_VU1_VU3	SP_C	
C_VL1	VL Pad	
C_LL1	SP_B	Thin seam – take care when mining
C_LL2B_LL2T	SP_P	
C_LL3B	SP_M	Keep a gap between existing OX coal please

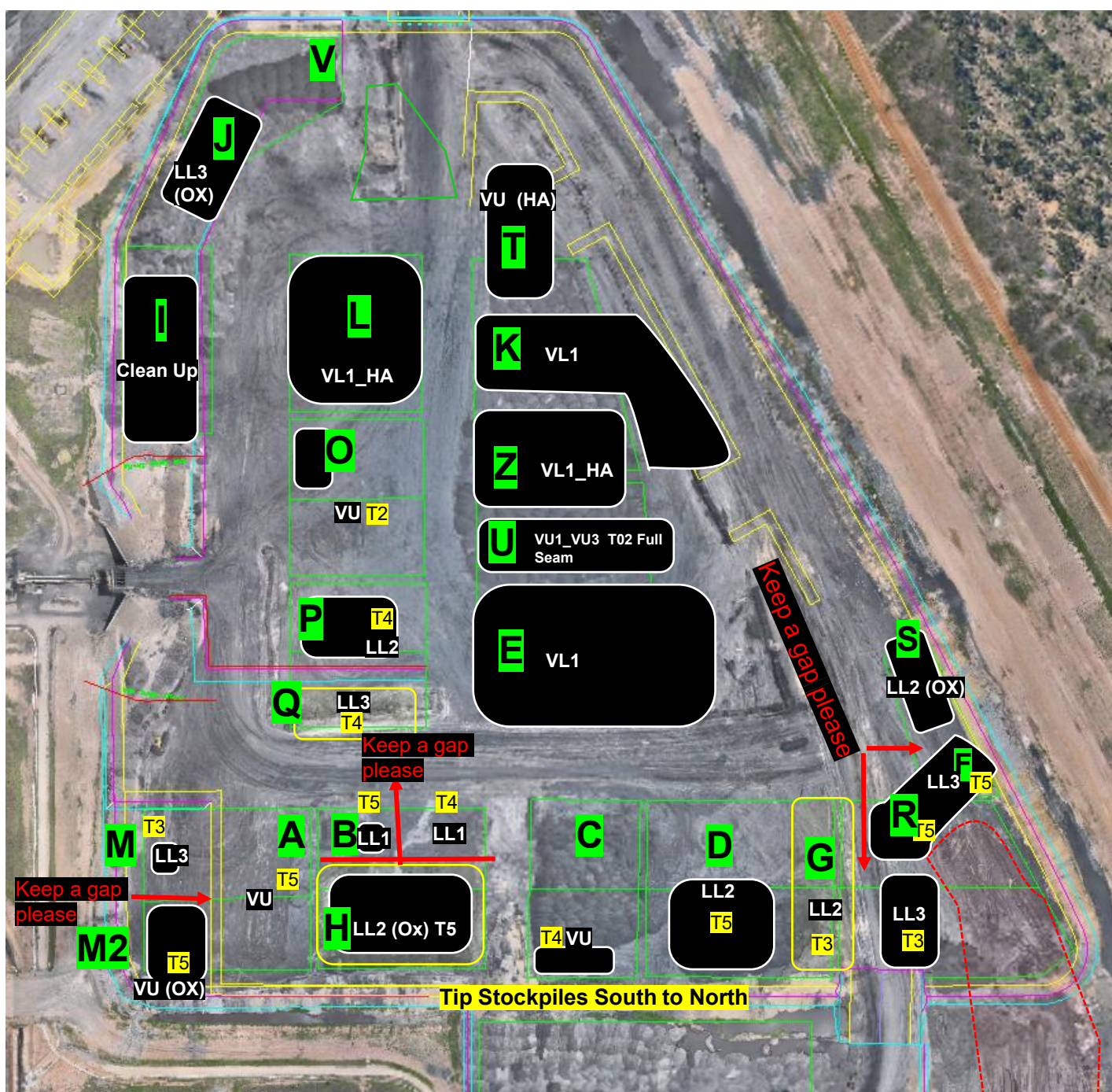


T05/S01 140 RL

COAL CODE	STOCKPILE	COMMENTS
C_LL1	SP_B	Thin seam – take care when mining
C_LL2T_LL2B	SP_D	
C_LL3B	SP_R/SP-F	Eastern Side
C_VU1_VU3	SP_A	
C_VL1	VL Pad	



ROM



CHPP Coal Feed Sequence

Communicate any direct feed start and finish time to CHPP control.

Comments

Currently on Blend 4
Once Stockpile F exhausted change to Blend 5
Once Stockpile G exhausted change to Blend 6

Notes:

Stockpile P has loads of dirt on back of pile, which should be clearly pegged out on ground. DO NOT put this material into the CHPP

CHPP Shutdown from 03:00 07/08 to 19:00 07/8

	Blends							
	Feed 1	Feed 2	Feed 3	Ratio	ROM Loaders	ROM Trucks	Direct Feed	Comments
Blend 1								
Blend 2	SP-H	SP-R		2:1	1	1	No	2 x LL2 (Ox T05S01): 1 x LL3 (T03S02)
Blend 3								
Blend 4	SP-G	SP-F		2:1	1	1	No	2 x LL2 (T03S02): 1 x LL3 (T05S01)
Blend 5	SP-G	SP-R		2:1	1	1	No	2 x LL2 (T03S02): 1 x LL3 (T03S02)
Blend 6	SP-P	SP-R		2:1	1	1	No	2 x LL2 (T04S01): 1 x LL3 (T03S02)
Wet weather								

