

ODC Daily Coaling Plan

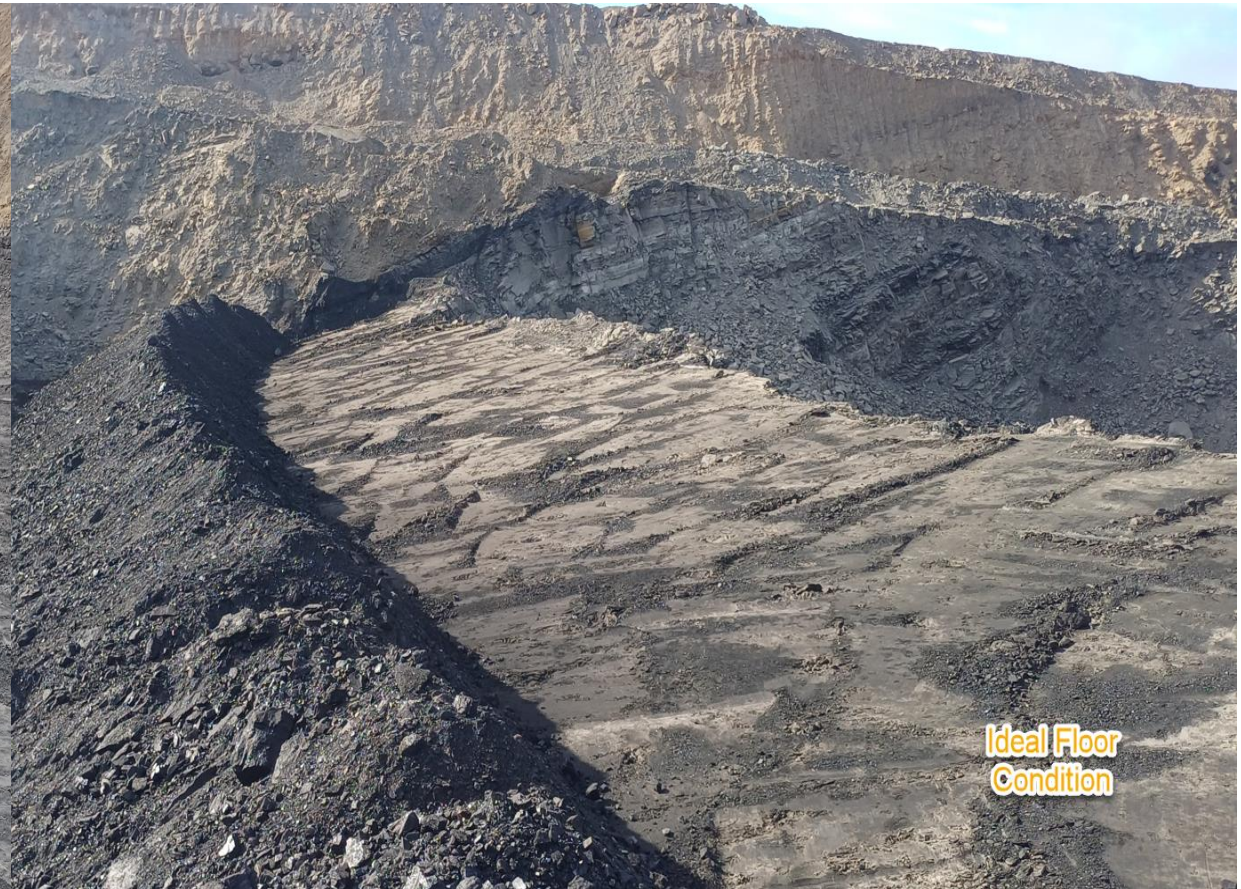
10/08/2025

Geologist Contact: 0473 223 132



Location	Coal Type	Destination	Comments
T02	C_VU1_VU3	SP_O	
	C_VL1	VL Pad	DO not mine past RL95
T03	C_VU1_VU3		
	C_LL1	SP_B	Thin seam – take care when mining Tip Stockpile South to North
	C_LL2T_LL2B	SP_G	
	C_LL3B	SP_M	Thin seam – take care when mining.
T04	C_LL1	SP_B	Thin seam – take care when mining
	C_LL2T_LL2B	SP_P	
	C_LL3B	SP_Q	
	C_VU1_VU3	SP_C	
	C_VL1	VL_PAD	
T05 Ramp 6 De-Stack	C_LL1	SP_B	
	C_LL3B	SP-R	
	C_LL2T_LL2B	SP_D	
	C_VU1_VU3	SP_A	
	C_LL2T_LL2B_OX	SP_S	
	C_LL3B_OX	SP_J	
T05	C_LL1	SP_B	Thin seam – take care when mining
	C_LL2T_LL2B	SP_D	
	C_LL3B	SP-R	Thin seam – take care when mining
	C_VU1_VU3	SP_A	

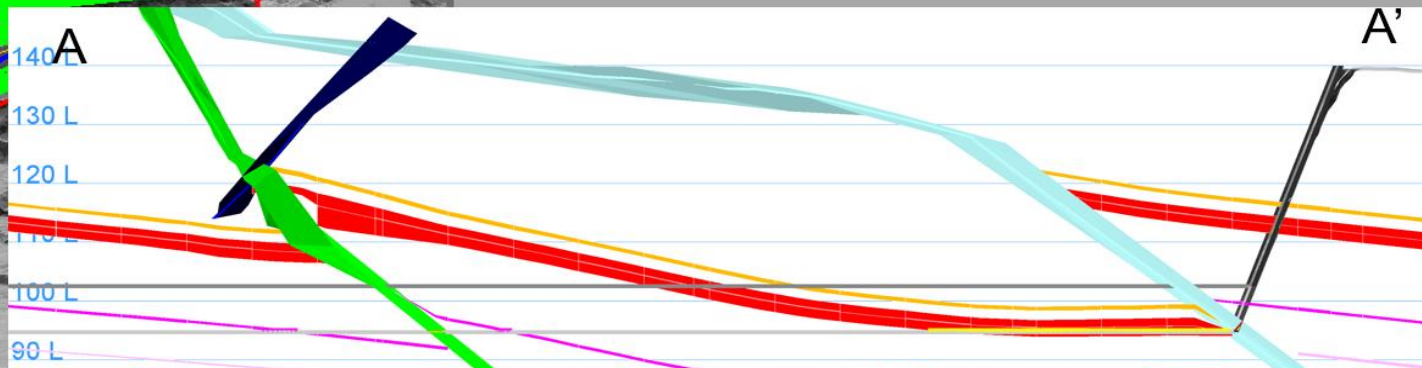
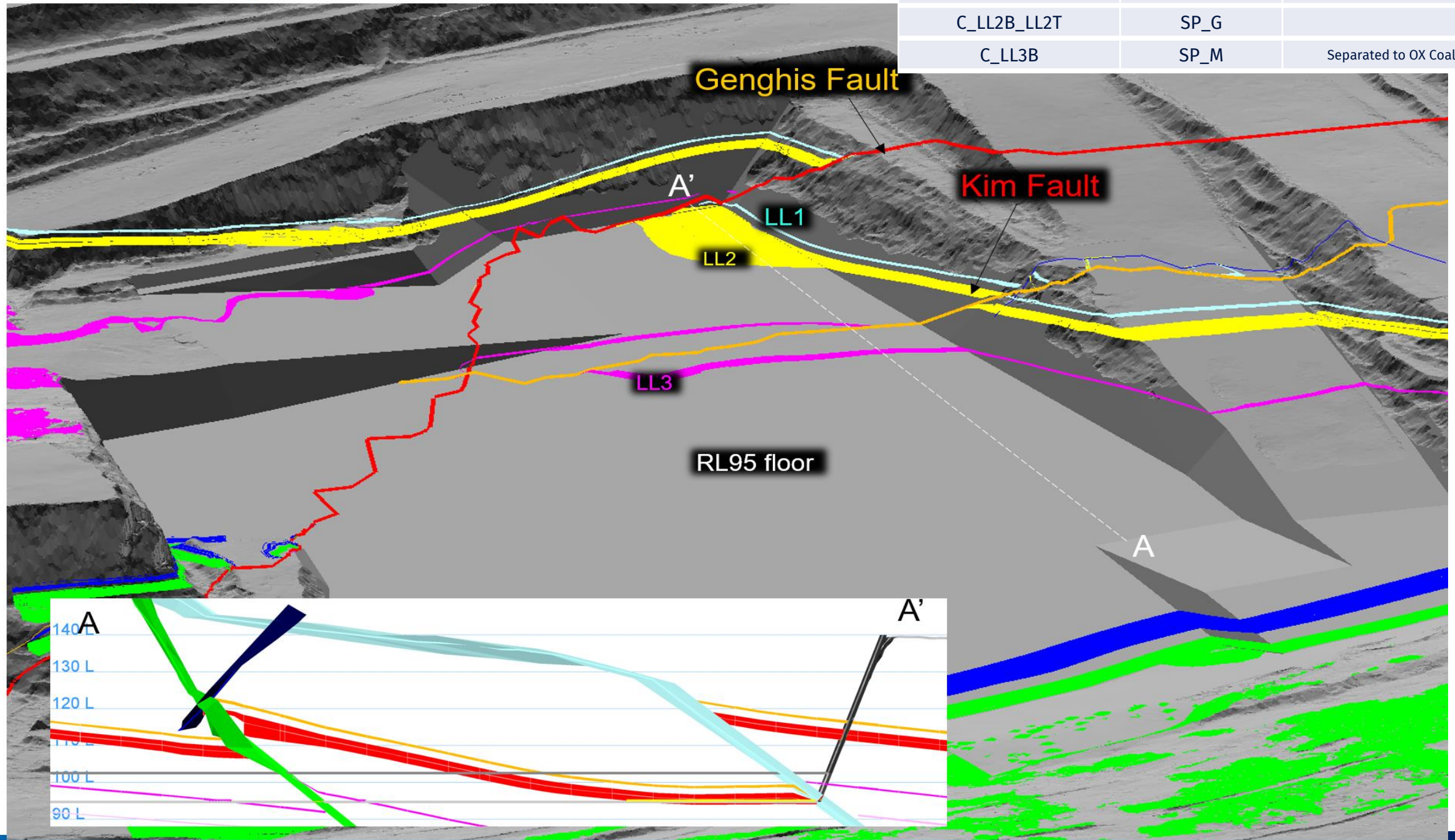
Ideal Roof and Floor Conditions



Flitch (RL95)

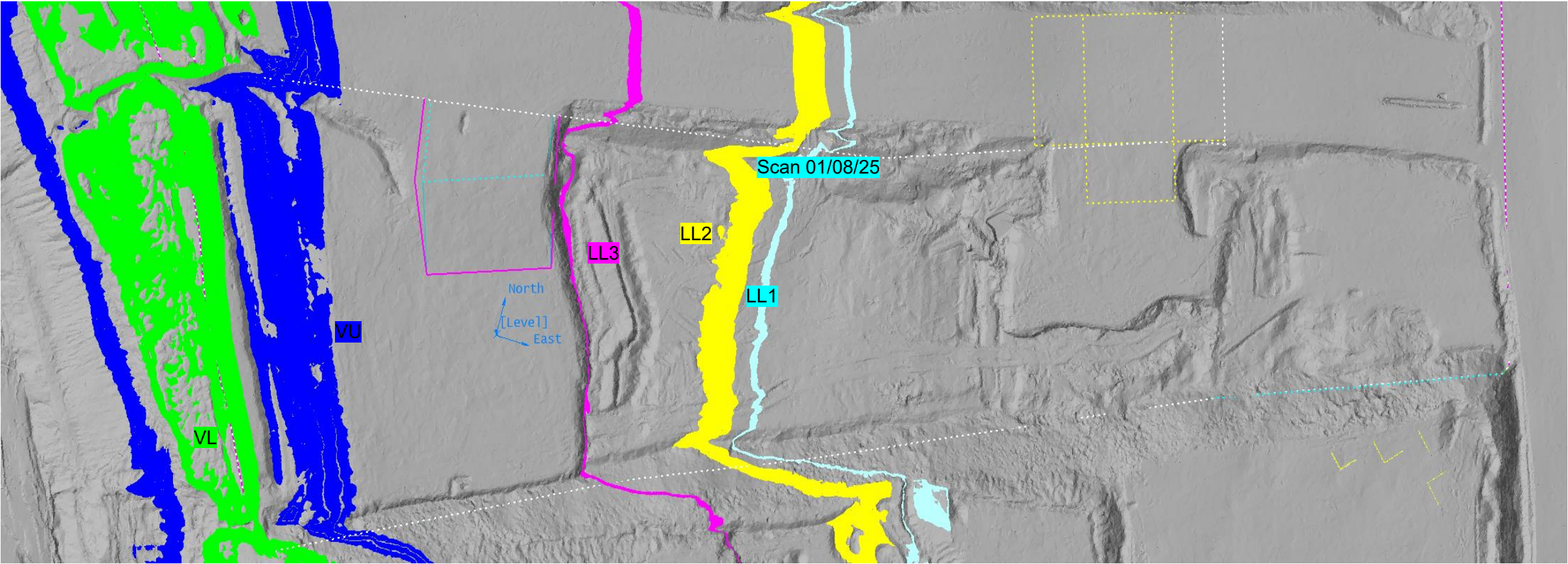
T03/S02

COAL CODE	STOCKPILE	COMMENTS
C_LL1	SP_B	Thin seam – take care when mining
C_LL2B_LL2T	SP_G	
C_LL3B	SP_M	Separated to OX Coal



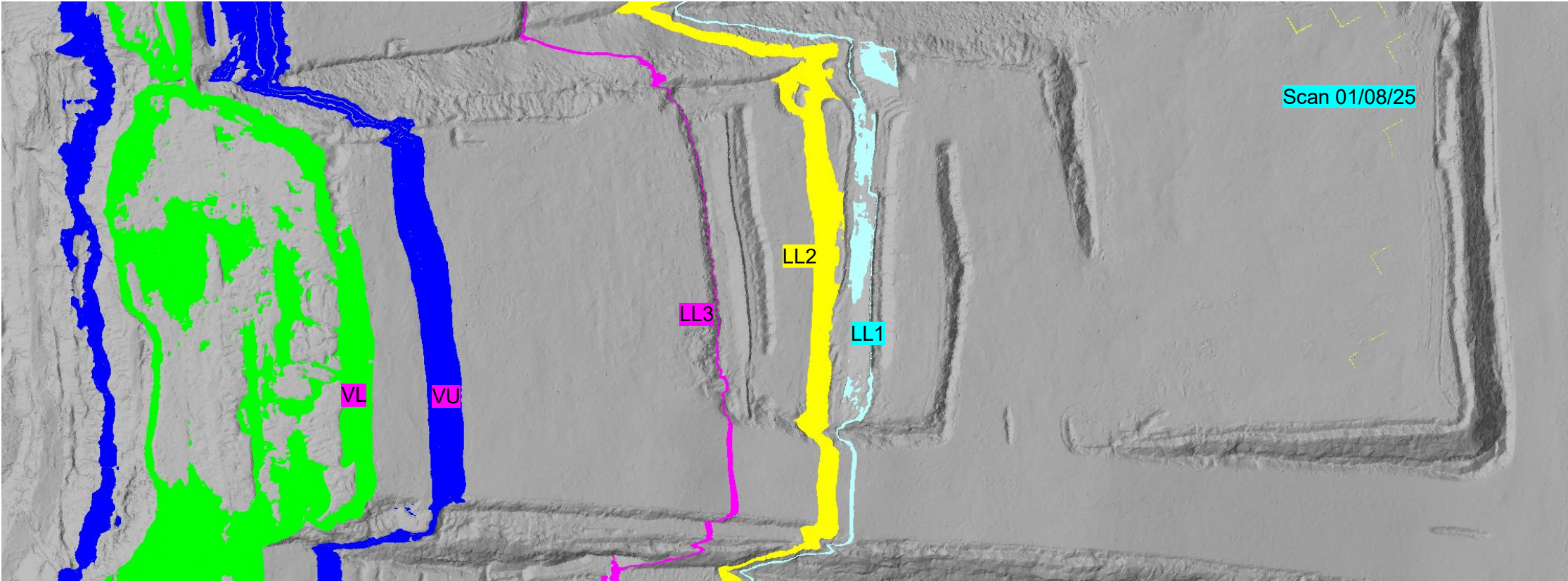
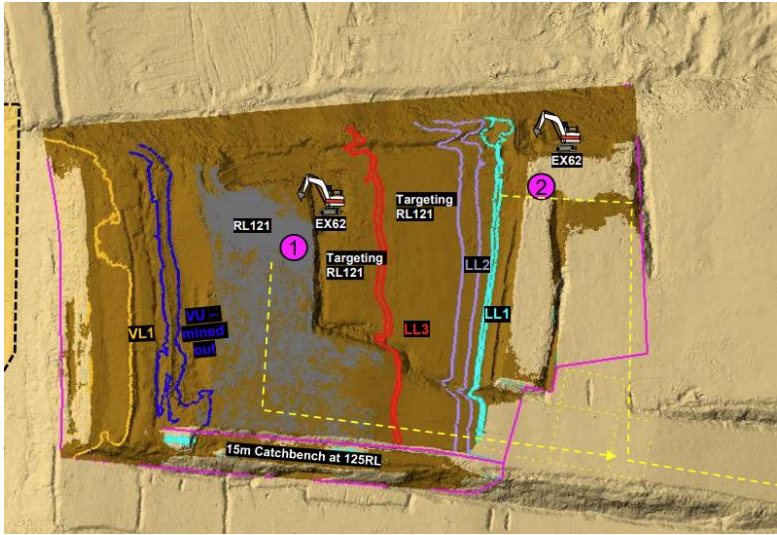
T04/S01 Ramp 5 De-Stack

COAL CODE	STOCKPILE	COMMENTS
C_VU1_VU3	SP_C	
C_VL1	VL Pad	
C_LL1	SP_B	Thin seam – take care when mining
C_LL2B_LL2T	SP_P	
C_LL3B	SP_Q	



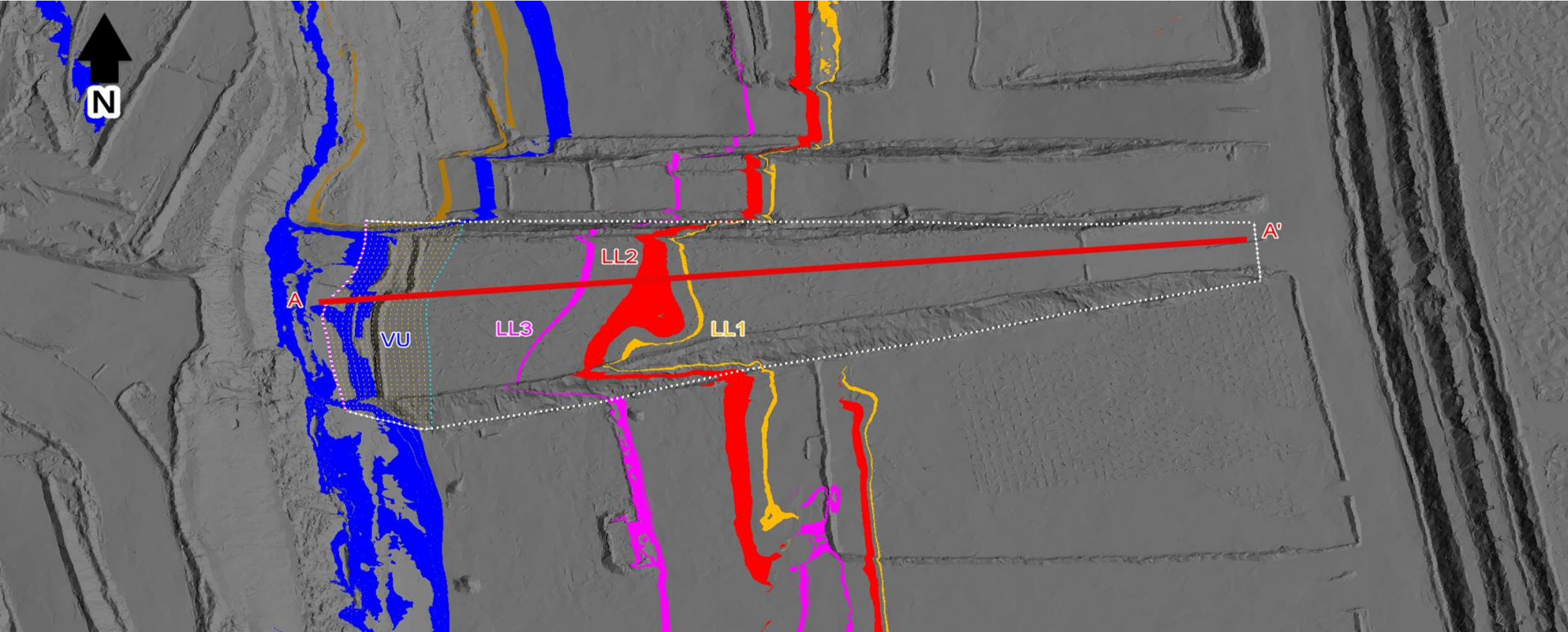
T04/S01 123 RL

COAL CODE	STOCKPILE	COMMENTS
C_VU1_VU3	SP_C	
C_VL1	VL Pad	
C_LL1	SP_B	Thin seam – take care when mining
C_LL2B_LL2T	SP_P	
C_LL3B	SP_M	Keep a gap between existing OX coal please

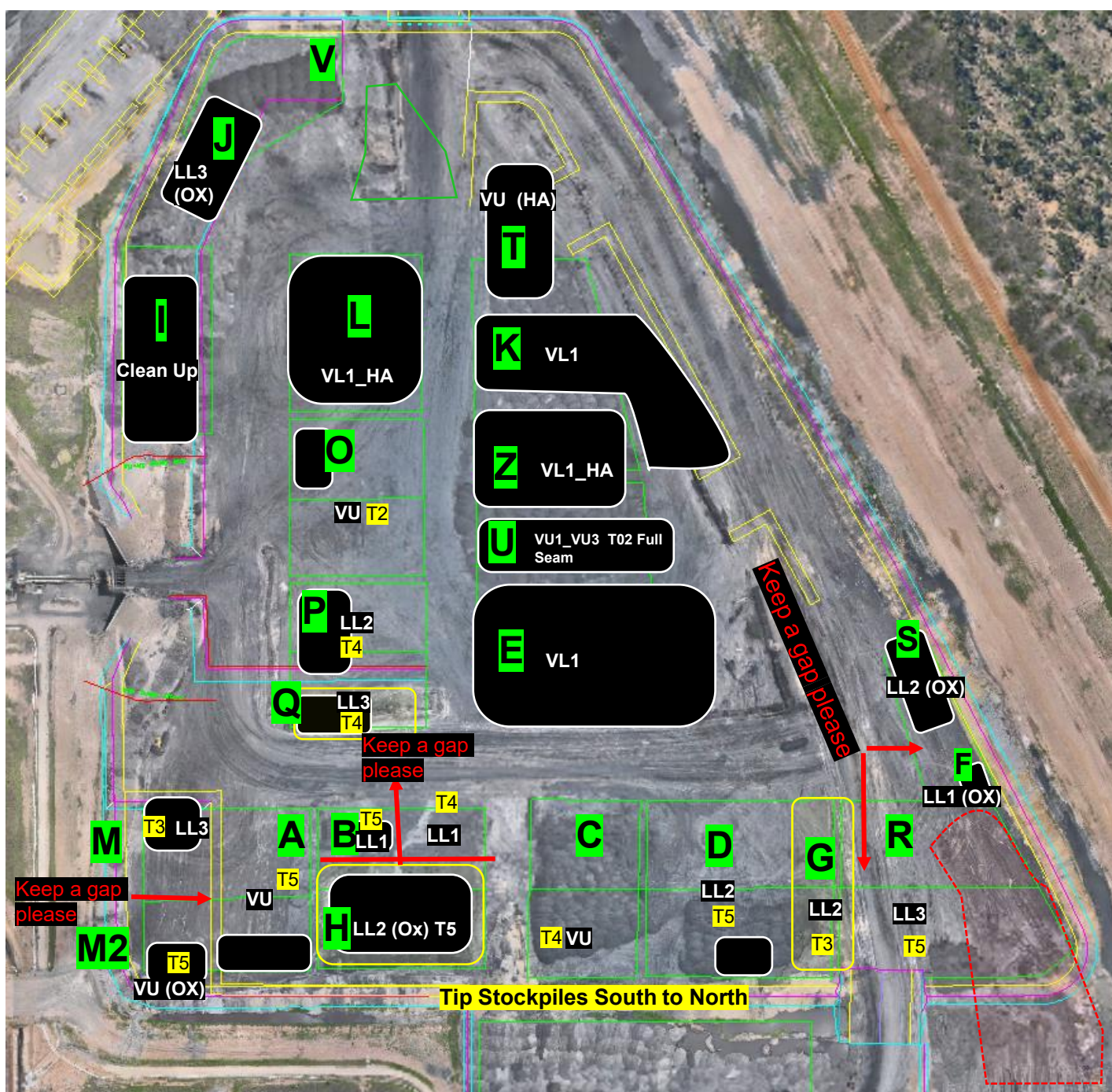


T05/S01 152 RL Ramp 6 De-Stack

COAL CODE	STOCKPILE	COMMENTS
C_LL1	SP_B	Thin seam – take care when mining
C_LL2T_LL2B	SP_D	
C_LL3B	SP_R	Eastern Side
C_VU1_VU3	SP_A	
C_LL2_OX	SP_S	
C_LL3B_OX	SP_J	



ROM



Communicate any direct feed start and finish time to CHPP control.

If Blend 5 product quality below 6 CSN then change to Blend 6.

[illegible]

