

ODC Daily Coaling Plan

13/08/2025

Geologist Contact: 0473 223 132

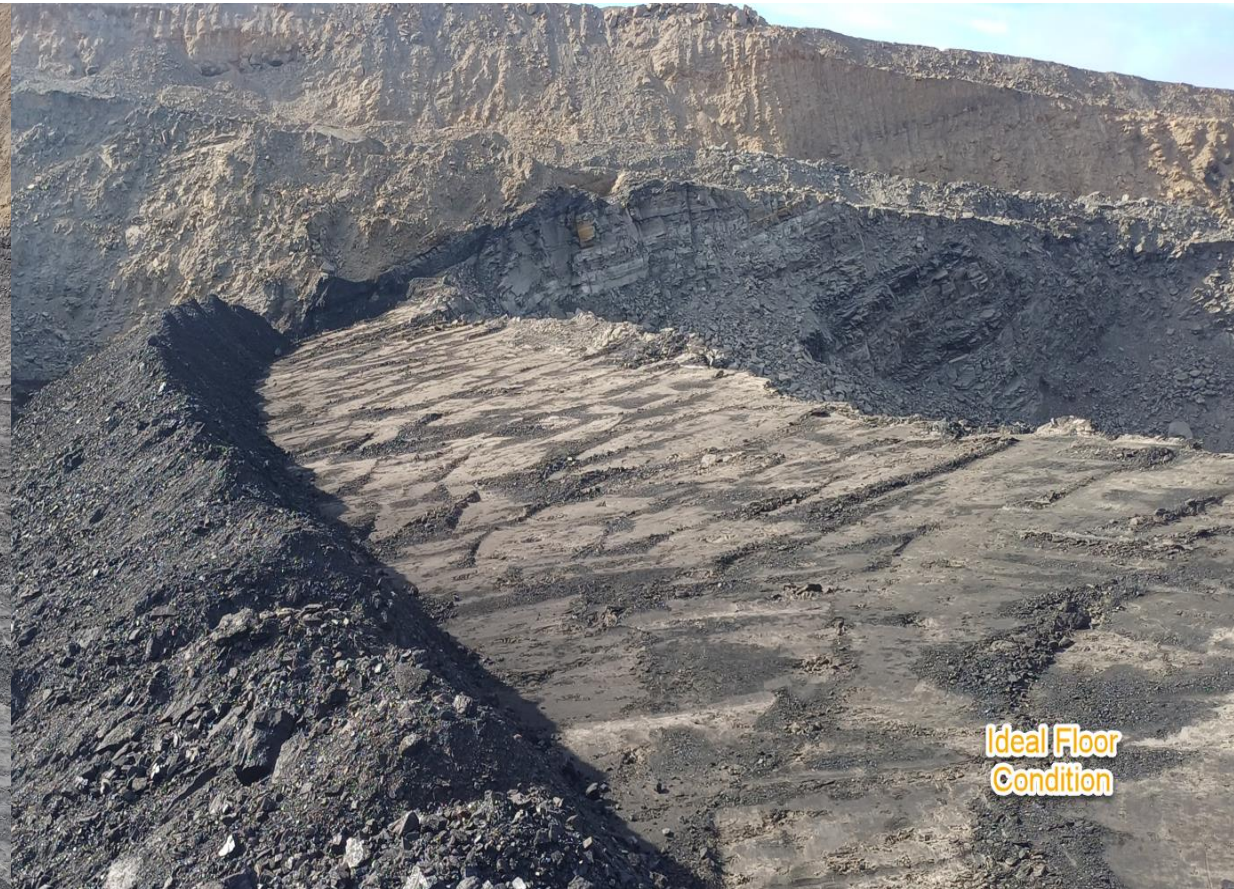


Coal Locations

Location	Coal Type	Destination	Comments
T02	C_VU1_VU3	SP_C	
T03	C_VU1_VU3		
	C_LL1	SP_B	Thin seam – take care when mining Tip Stockpile South to North
	C_LL2T_LL2B	SP_G	
	C_LL3B	SP_M	Thin seam – take care when mining.
T04	C_LL1	SP_B	Thin seam – take care when mining
	C_LL2T_LL2B	SP_P	
	C_LL3B	SP_Q	
	C_VU1_VU3	SP_O	
T05	C_LL1	SP_B	Thin seam – take care when mining
	C_LL2T_LL2B	SP_D	
	C_LL3B	SP-R	Thin seam – take care when mining
	C_VU1_VU3	SP_A	

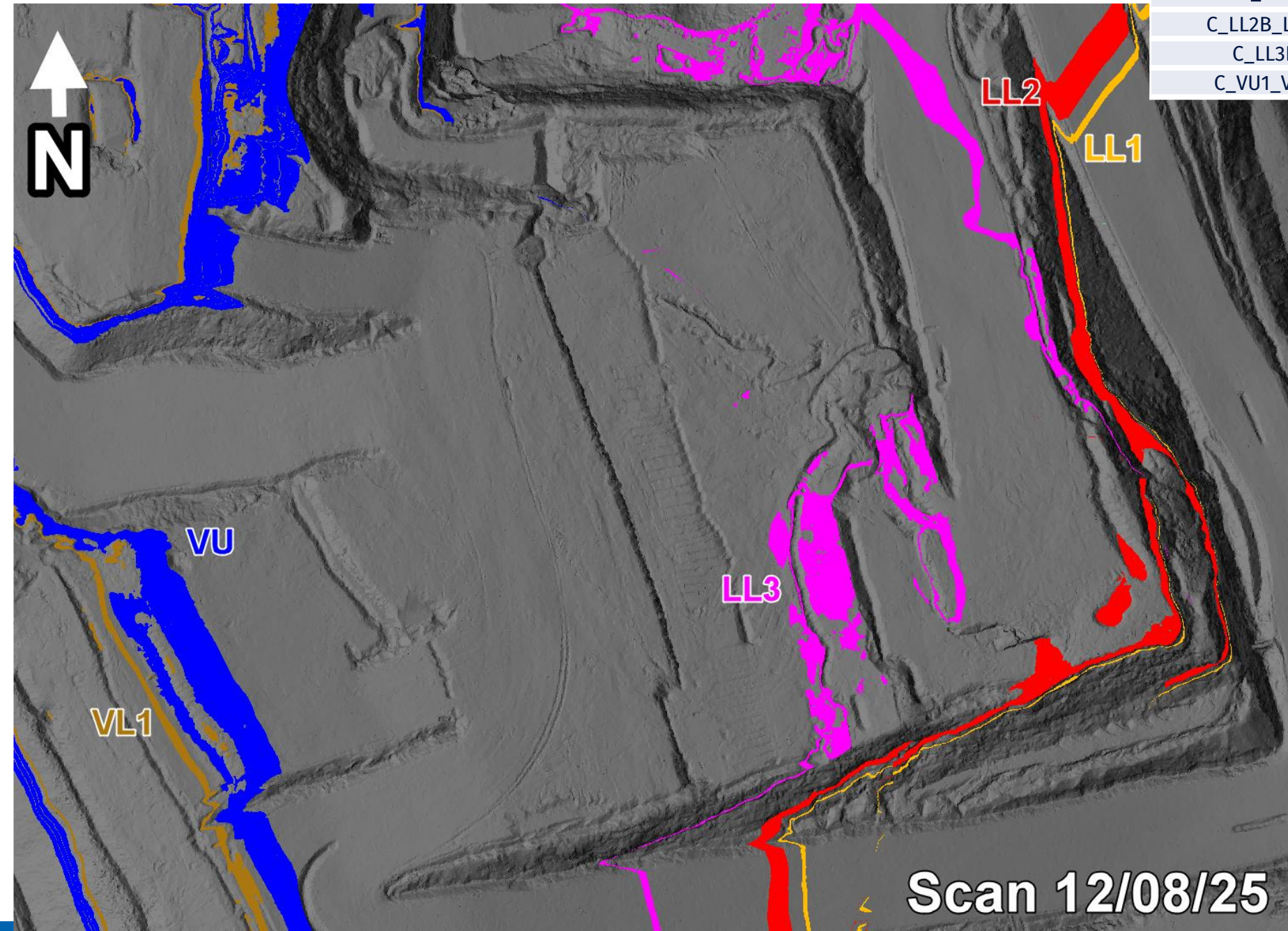
All VL1 to go
to the VL Pad

Ideal Roof and Floor Conditions

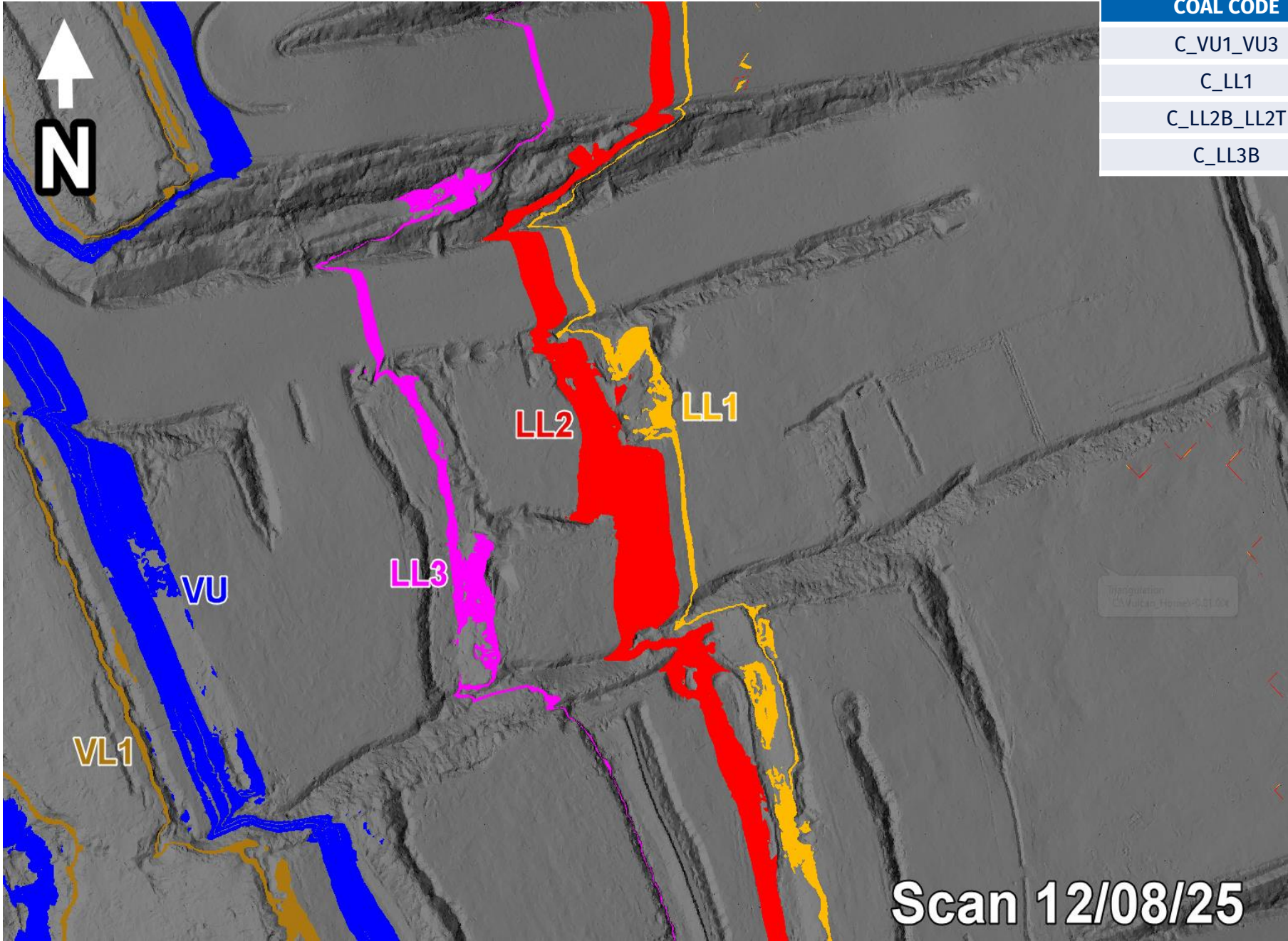


T03/S02

COAL CODE	STOCKPILE	COMMENTS
C_LL1	SP_B	Thin seam - take care when mining
C_LL2B_LL2T	SP_G	
C_LL3B	SP_M	Separated to OX Coal
C_VU1_VU3		



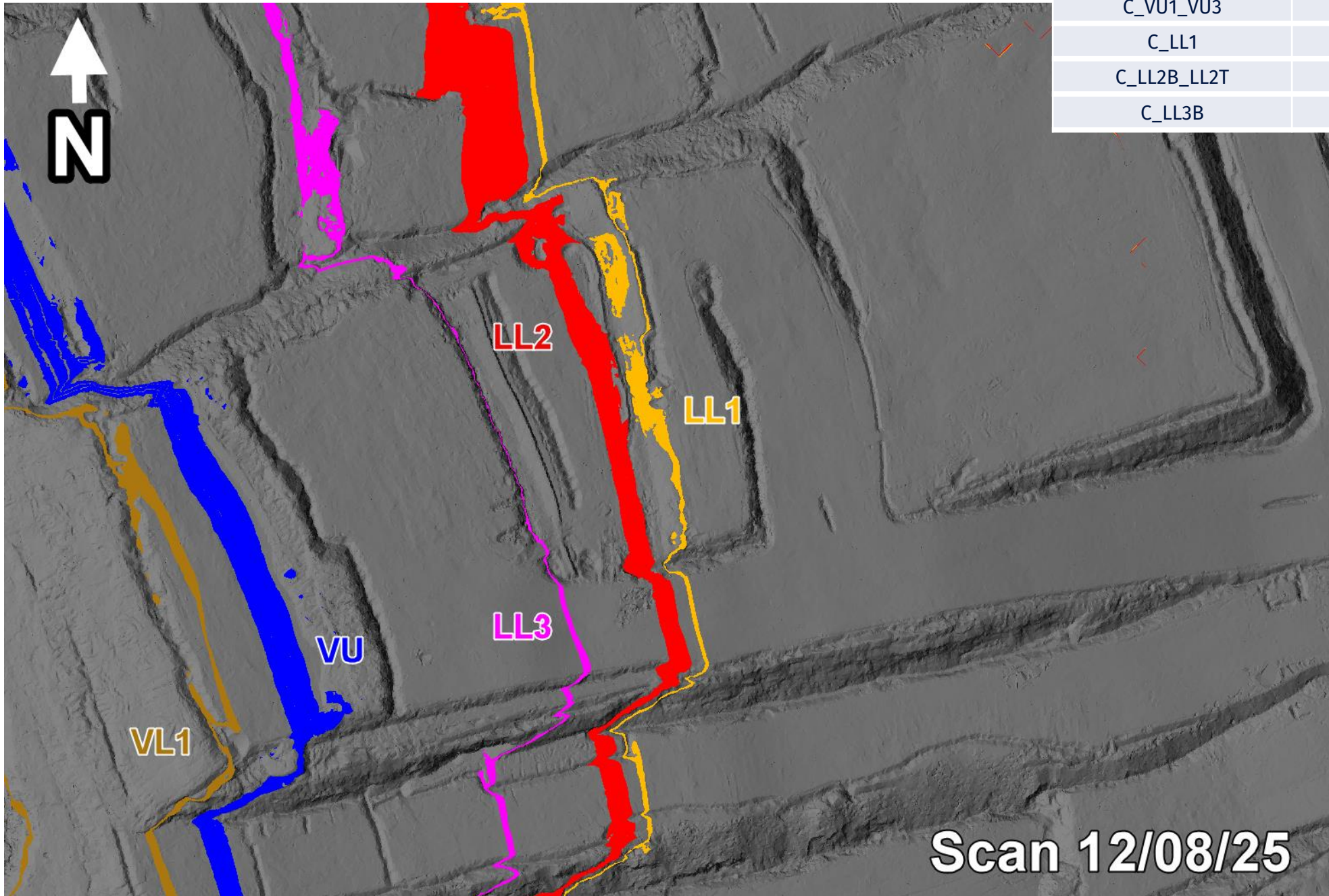
T04/S01 Ramp 5 De-Stack



COAL CODE	STOCKPILE	COMMENTS
C_VU1_VU3	SP_O	
C_LL1	SP_B	Thin seam – take care when mining
C_LL2B_LL2T	SP_P	
C_LL3B	SP_Q	

T04/S01

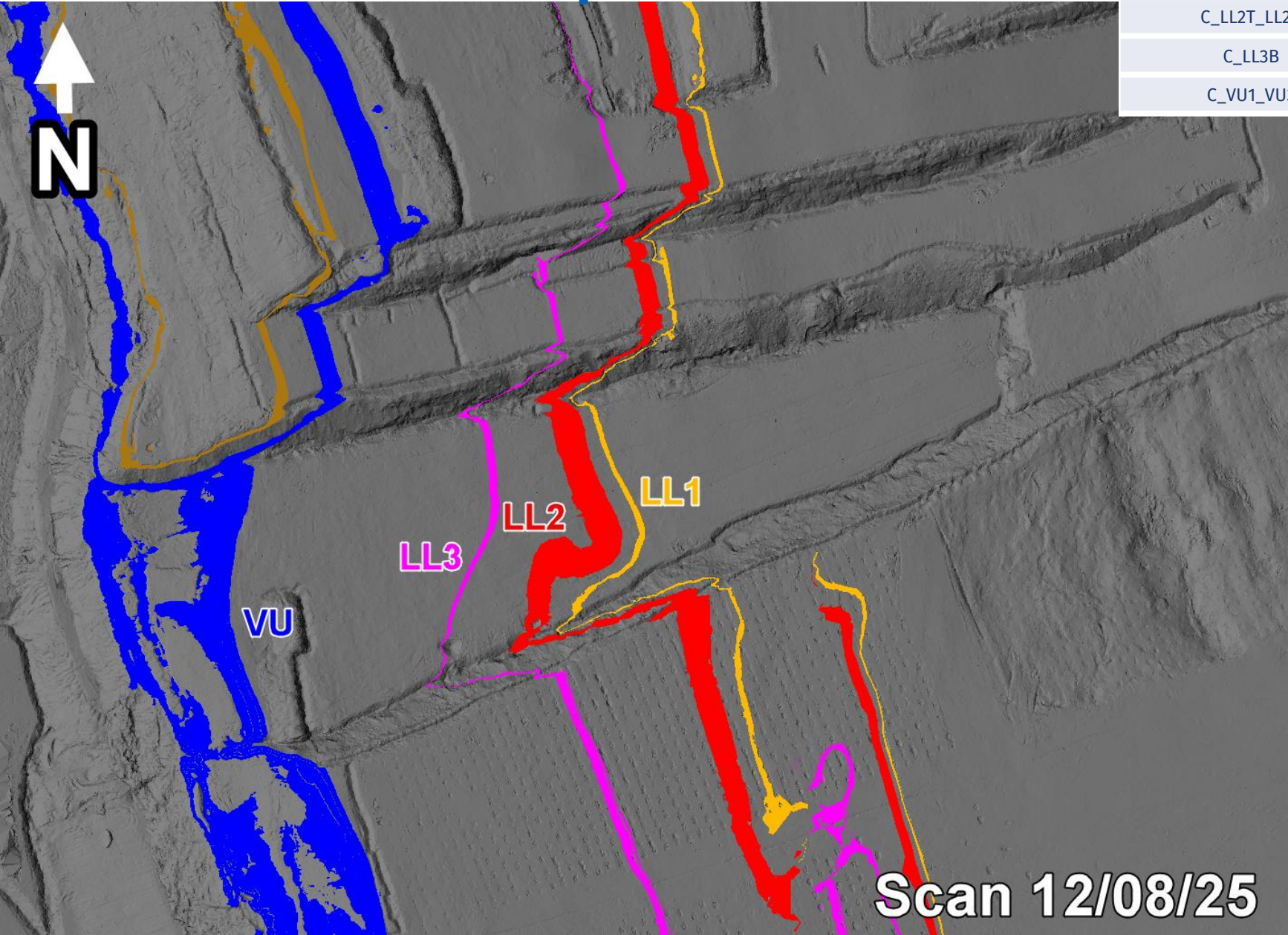
COAL CODE	STOCKPILE	COMMENTS
C_VU1_VU3	SP_O	
C_LL1	SP_B	Thin seam – take care when mining
C_LL2B_LL2T	SP_P	
C_LL3B	SP_M	Keep a gap between existing OX coal please



Scan 12/08/25

THIESS

T05/S01 Ramp 6 De-Stack



COAL CODE	STOCKPILE	COMMENTS
C_LL1	SP_B	Thin seam – take care when mining
C_LL2T_LL2B	SP_D	
C_LL3B	SP_R	Eastern Side
C_VU1_VU3	SP_A	

Communicate any direct feed start and finish time to CHPP control.

Notes:

Once stockpile O exhausted change to Blend 6

[illegible]

